

CYPRESS 19

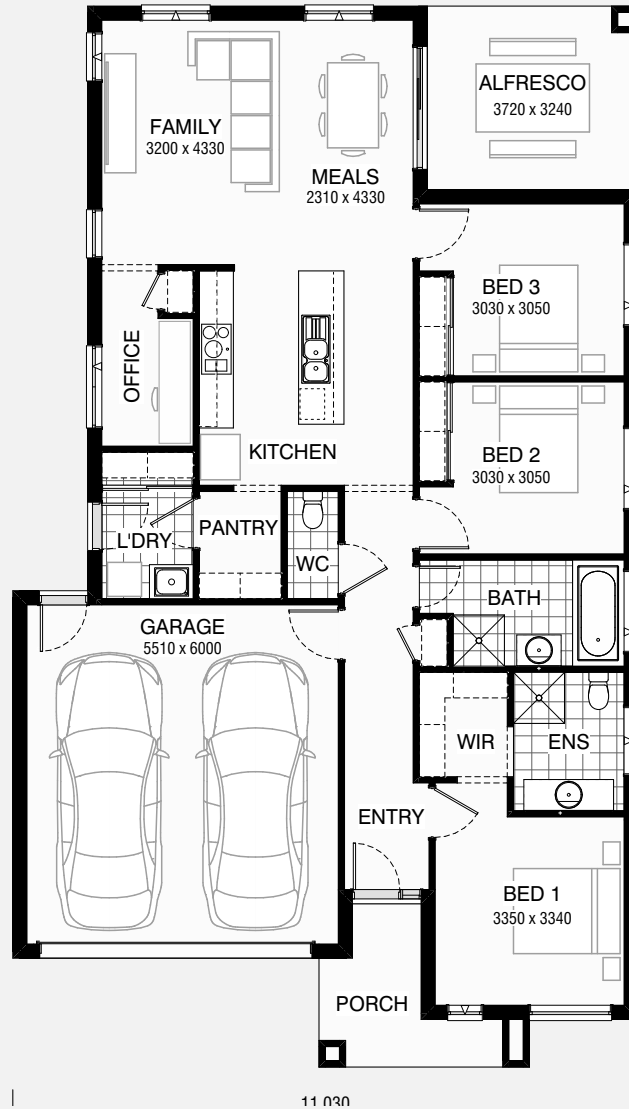
3 2 2

Total squares 19.5sq

B
SERIES

Minimum
Lot Width
12.5m

Minimum
Lot Length
25.0m



Design Dimensions
11,030mm(W) x 18,710mm(L),

Facade Choices
Brentwood, Glendale, Inglewood,
Malibu, Northridge, Pasadena, Santa Monica.
Details based on Inglewood façade floorplan (illustrated)

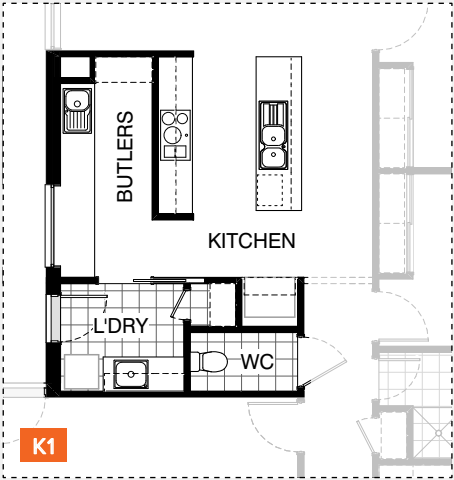
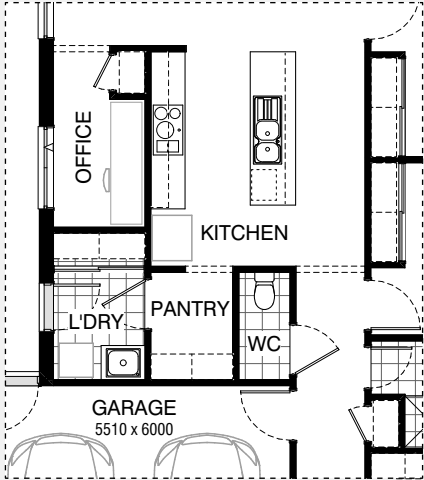
DESIGN DIMENSIONS

Residence	126.1m ²	13.6sq
Garage	36.4m ²	3.9sq
Porch	6.2m ²	0.7sq
Alfresco	12.1m ²	1.3sq
Total	180.8m²	19.5sq

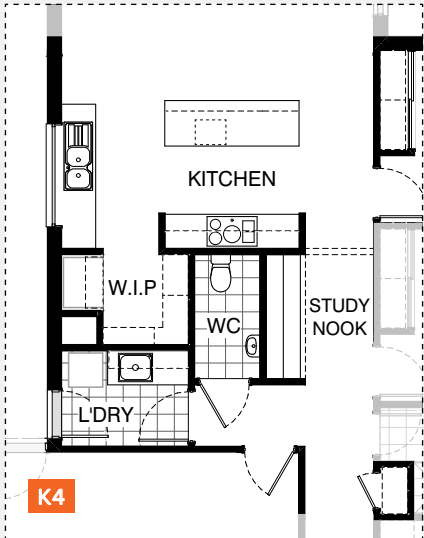
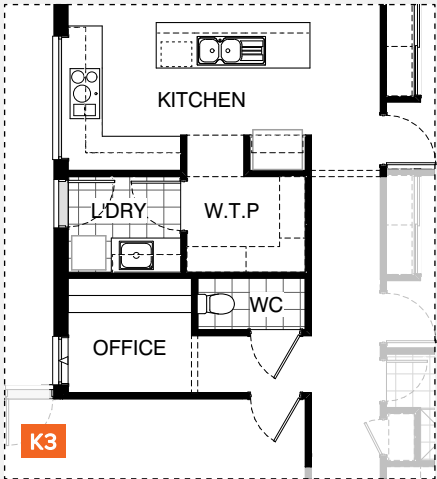
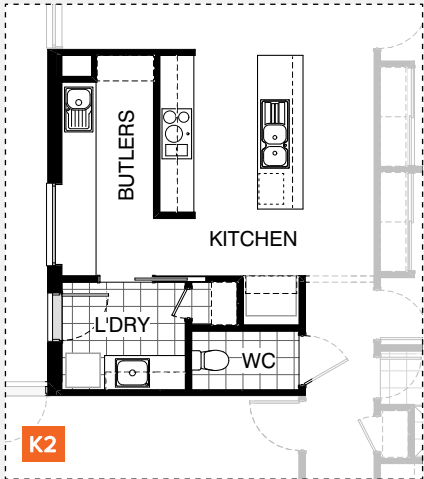
Burbank

*Copyright conditions. All photos and illustrations are representative only. Floor plans and specifications may be varied by Burbank without notice, the dimensions are diagrammatic only and a Building Contract with final drawings will display correct dimensions and detail. All designs are the property of Burbank and must not be used, reproduced, copied or varied, wholly or in part without written permission from an authorised Burbank representative. Copyright Burbank Australia Pty Ltd. ABN 91 007 099 872. Builders Registration Number CDB-U-52603.

KITCHEN OPTIONS

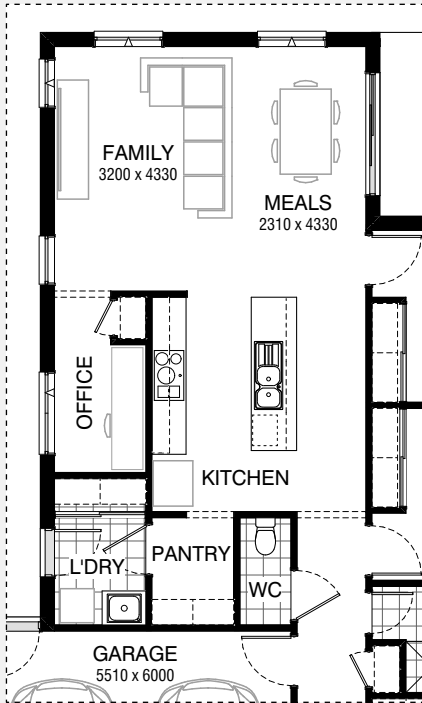


Master Kitchen Design

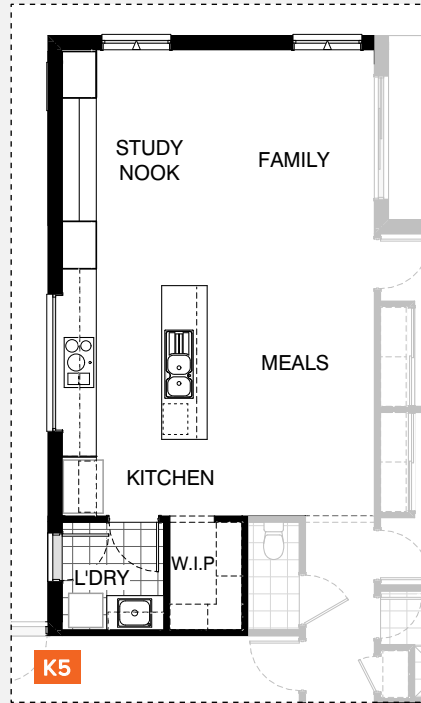




KITCHEN OPTIONS

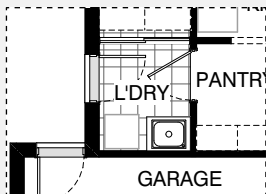


Master Kitchen Design

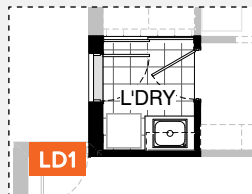


K5

LAUNDRY OPTIONS

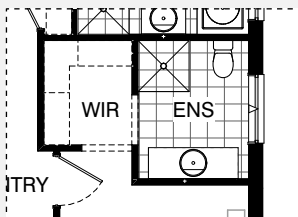


Master Laundry Design

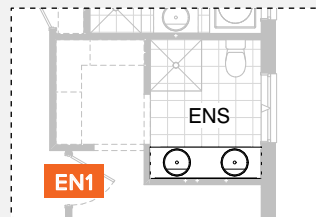


LD1

ENSUITE OPTIONS

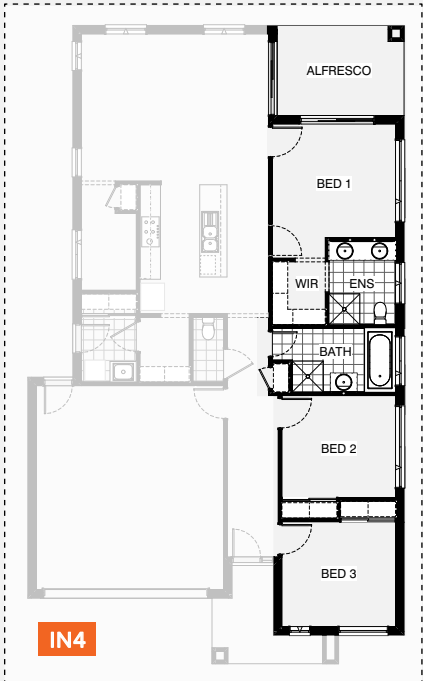
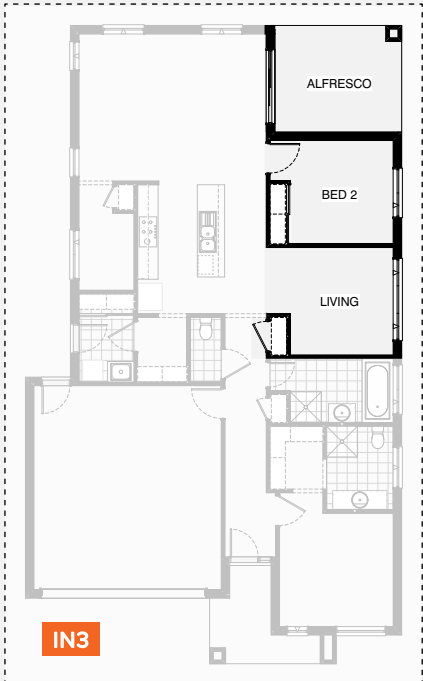
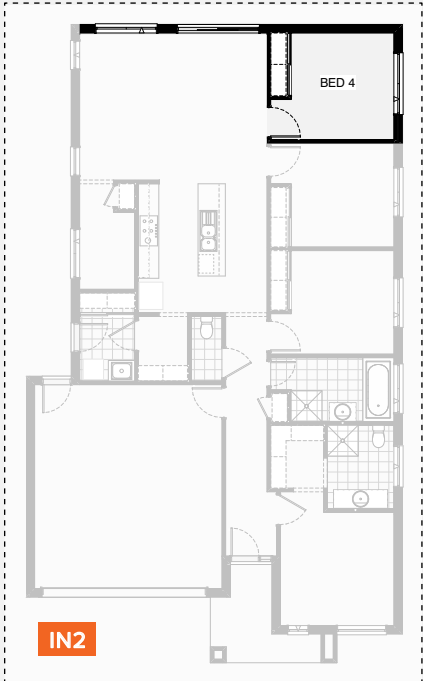
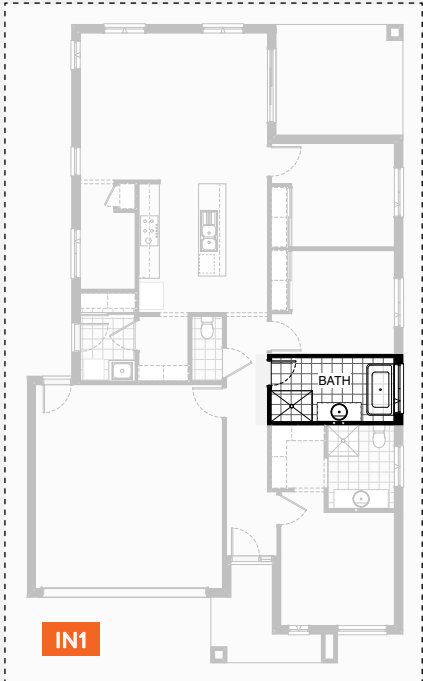


Master Ensuite Design

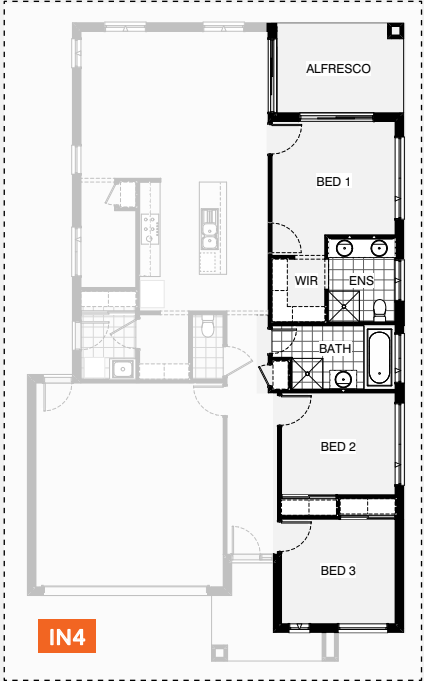


EN1

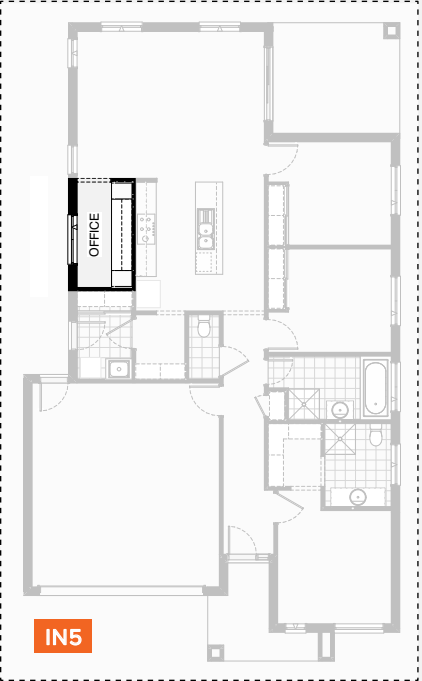
INTERNAL OPTIONS



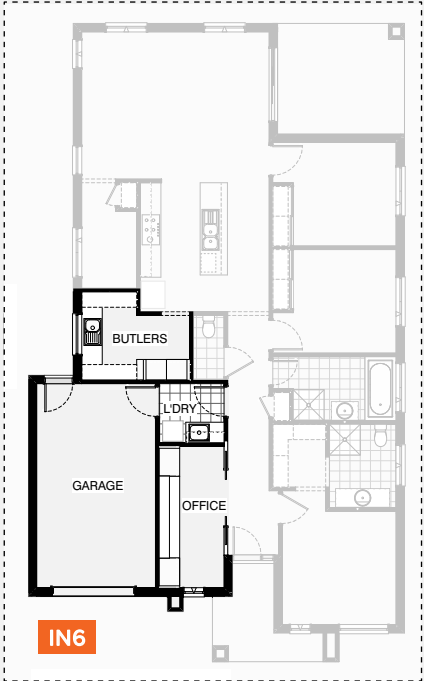
INTERNAL OPTIONS



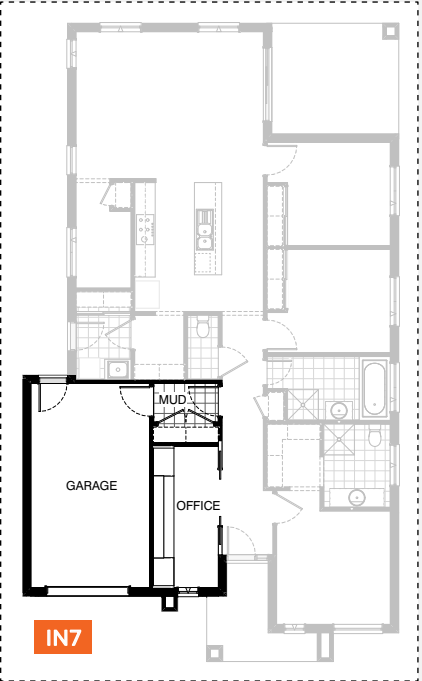
IN4



IN5



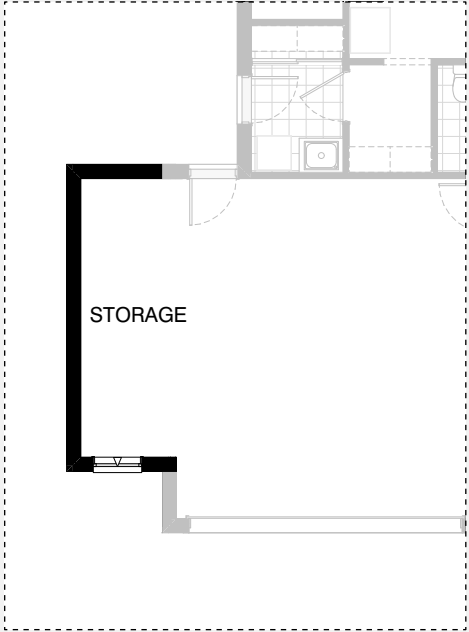
IN6



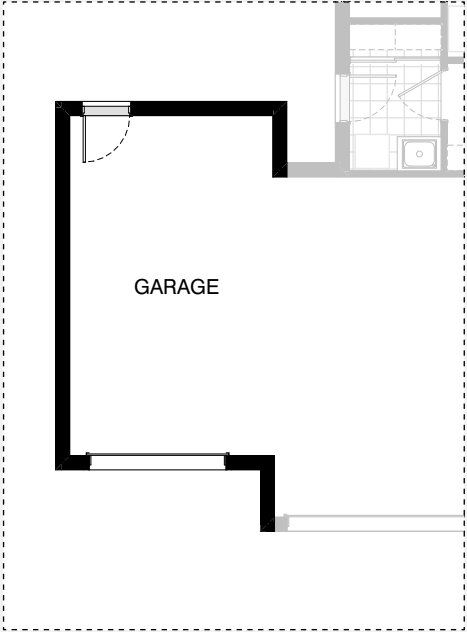
IN7



GARAGE OPTIONS



G1



G2

CYPRESS 19

OPTION DESCRIPTIONS

Kitchen Option 01

Provide Butler's Pantry in lieu of Walk-in Pantry and Office, including:

20mm stone benchtop
1No. 900mm base cupboard
3No. 800mm base cupboards
open shelf over relocated Ref space
1No. built-in Linen cupboard with 520mm hinged door
Relocate WC

Provide 1No. 1200mm x 1450mm aluminium fixed window with no bottom reveal.

Laundry includes:

1No. 920mm cavity sliding door,
1No. 900mm base cupboard with inset trough,
1No. 450mm base cupboard,
1No. 900mm overhead cupboard,
1No. 450mm overhead cupboard,
32mm laminate benchtop and tiled splashback to suit.

Kitchen Option 02

Provide Kitchen upgrade option with L-shaped benchtop, relocating Ref space, Laundry, WC and Office. Kitchen includes:

1No. 900mm retractable rangehood,
1No. 900mm underbench oven and cooktop,
1No. 450mm drawer unit,
1No. dishwasher provision,
1No. microwave provision with pot drawer,
1No. 900mm base cupboard,
1No. 900mm corner base cupboard,
2No. 700mm base cupboards,
2No. 450mm base cupboards,
1No. 900mm overhead cupboard,
1No. 450mm overhead cupboard,
1No. 400mm overhead open shelf unit,
1No. 450mm laminated Pantry unit with
5No. 450mm shelves,
open shelf over Ref space,
1No. 1200mm x 1810mm aluminium fixed window with no bottom reveal over sink.

Walk-through Pantry includes:

3No. 600mm laminated Pantry units with
5No. 450mm shelves.

Laundry includes:

1No. 870mm hinged door,
1No. 900mm base cupboard with inset trough,
1No. 450mm base cupboard,
1No. 900mm overhead cupboard,
1No. 450mm overhead cupboard,
32mm laminate benchtop and tiled splashback to suit.

Office joinery includes:

1No. 600mm deep 32mm thick laminate desk,
1No. 450mm wide drawer unit beneath desk,
2No. 300mm deep 60mm thick open shelves over desk,
1No. 1800mm x 850mm aluminium awning window in lieu of standard.

Flip hinged door and built-in Robe locations to Bed 3.

Relocate hinged door in Garage.

Kitchen Option 03

Provide Kitchen upgrade option with L-shaped benchtop, relocating Ref space, Laundry, WC and Office. Kitchen includes:

1No. 900mm retractable rangehood,
1No. 900mm underbench oven and cooktop,
1No. 450mm drawer unit,
1No. dishwasher provision,
1No. microwave provision with pot drawer,
1No. 900mm base cupboard,
1No. 900mm corner base cupboard,
2No. 700mm base cupboards,
1No. 350mm base cupboard,
2No. 700mm overhead cupboards,
1No. 350mm overhead cupboard,

2No. 300mm overhead cupboards,

1No. 600mm corner overhead cupboard,
open shelf over Ref space,

1No. 514mm x 2170mm aluminium fixed window with no bottom reveal over cooker.

Walk-through Pantry includes:

4No. 450mm shelves.

Laundry includes:

1No. 870mm hinged door,
1No. 800mm base cupboard with inset trough,
1No. 350mm base cupboard,
1No. 800mm overhead cupboard,
1No. 350mm overhead cupboard,
32mm laminate benchtop and tiled splashback to suit.

Office joinery includes:

1No. 600mm deep 32mm thick laminate desk,
1No. 450mm wide drawer unit beneath desk,
2No. 300mm deep 60mm thick open shelves over desk,
1No. 1800mm x 850mm aluminium awning window in lieu of standard.

Flip hinged door and built-in Robe locations to Bed 3.

Relocate hinged door in Garage.

Kitchen Option 04

Provide Kitchen upgrade option with 3-way benchtop, relocating Ref space, Laundry, WC and provide Study Nook in lieu of Office. Kitchen includes:

1No. 900mm retractable rangehood,
1No. 900mm underbench oven and cooktop,
1No. 450mm drawer unit,
1No. dishwasher provision,
1No. microwave provision with pot drawer,
2No. 900mm base cupboards,
2No. 700mm base cupboards,
2No. 600mm base cupboards,
2No. 700mm overhead cupboards,
open shelf over Ref space,
1No. 1200mm x 1810mm aluminium fixed window with no bottom reveal over sink.

Walk-in Pantry includes:

4No. 450mm shelves,
4No. 300mm shelves.

Laundry includes:

1No. 870mm hinged door,
1No. 900mm base cupboard with inset trough,
1No. 450mm base cupboard,
1No. 900mm overhead cupboard,
1No. 450mm overhead cupboard,
32mm laminate benchtop and tiled splashback to suit.

Provide Linen cupboard to passage with

4No. 450mm shelves in lieu of Coats.

Study Nook joinery includes:

1No. 600mm deep 32mm thick laminate desk,
1No. 450mm wide drawer unit beneath desk,
2No. 300mm deep 60mm thick open shelves over desk.

Flip hinged door and built-in Robe locations to Bed 3.

Relocate hinged door in Garage.

Provide wall basin to new Powder.

Remove standard window from Family.

Kitchen Option 05

Provide alternate Kitchen option with Study Nook in lieu of Office. Kitchen includes:

1No. 900mm retractable rangehood,
1No. 900mm under bench oven and cooktop,
1No. 450mm drawer unit,
1No. dishwasher provision,
1No. microwave provision with pot drawer,
1No. 900mm base cupboard,
2No. 800mm base cupboards,
2No. 400mm base cupboards,
2No. 800mm overhead cupboards,



CYPRESS 19

OPTION DESCRIPTIONS

2No. 400mm overhead cupboards, open shelf over Ref space,
1No. 514mm x 2410mm aluminium fixed window with no bottom reveal over cooker.
Walk-in Pantry includes:
4No. 450mm shelves,
Laundry includes:
1No. 870mm hinged door,
1No. 900mm base cupboard with inset trough,
1No. 900mm overhead cupboard,
32mm laminate benchtop and tiled splashback to suit.
Study Nook joinery includes:
1No. 600mm deep 32mm thick laminate desk,
2No. 800mm laminated cupboards with 5No. 450mm shelves,
2No. 300mm deep 60mm thick open shelves over desk.
Provide 2No. 2057mm x 1210mm aluminium awning windows to Family in lieu of standard.

Laundry Option 01

Provide Laundry upgrade with laminate base and overhead cupboards, including:
1No. 800mm base cupboard with inset trough,
1No. 800mm overhead cupboard,
32mm laminate benchtop and tiled splashback to suit.

Ensuite Option 01

Provide Ensuite upgrade option including:
1No. 1782mm vanity with double basins including 1 row tiling beneath mirror to suit
wall-to-wall benchtop in lieu of standard.

Internal Option 01

Provide Bathroom upgrade option, including:
1No. 1500mm freestanding bath
1No. 1282mm vanity with single basin
900mm x 1200mm tiled shower base
Remove Coats cupboard to Passage.

Internal Option 02

Provide 4th Bedroom option in lieu of Alfresco, including:
1No. built-in Robe with 450mm shelf and hanging rail,
1No. 870mm hinged door,
1No. 1200mm x 1810mm aluminium awning window to Bed 4
1No. 1200mm x 1810mm aluminium awning window,
1No. 2095mm x 2410mm aluminium sliding door to Family / Meals in lieu of standard windows.

Internal Option 03

Provide second Living area option in lieu of Bedroom, including:
Remove built-in Robe and hinged door,
Provide 1No. built-in Linen with 870mm hinged door and 4No. 450mm shelves,
1No. 1200mm x 2410mm aluminium awning window in lieu of standard,
Option takes 120mm from Alfresco.

Internal Option 04

Provide Bed 1 option which moves it to the rear of the home, including:
1No. 2095mm x 2170mm aluminium sliding door to Bed 1 and Meals,
2No. 514mm x 2410mm aluminium awning windows in lieu of standard.
Option takes 600mm from Alfresco.
Ensuite has 1No. 1782mm vanity with double basins including 1 row tiling beneath mirror to suit wall-to-wall benchtop in lieu of standard.
Alternate Bed 1 hinged door location shown dashed.
Door to be located here if options Kitchen02, Kitchen03 or Kitchen04 are chosen.

Internal Option 05

Provide built-in joinery option to Home Office, including:
1No. 600mm deep 32mm thick laminate desk,
2No. 300mm deep 60mm thick open shelves over desk,
2No. 450mm laminated cupboards with 5No. 450mm shelves,
Remove built-in plaster-lined store.

Internal Option 06

Provide Home Office/Alternate laundry option with Single car Garage in lieu of Double Garage, and Butler's Pantry in lieu of Walk-in Pantry/Laundry, including:
Laundry with 870mm hinged door,
1No. 700mm base cupboard with inset trough,
1No. 350mm base cupboard,
1No. 700mm overhead cupboard,
1No. 350mm overhead cupboard,
32mm laminate benchtop and tiled splashback to suit.
Home Office with built-in joinery, including:
1No. 600mm deep 32mm thick laminate desk,
2No. 800mm laminated cupboards,
2No. 300mm deep 60mm thick open shelves over desk,
2No. 820mm bi-parting cavity sliding doors,
1No. 2057mm x 610mm aluminium awning feature window.
Butler's Pantry, including:
1No. 180mm wide full height wine rack,
2No. 600mm oven towers with microwave provisions,
600mm deep 20mm thick stone benchtop with single bowl sink,
2No. 800mm base cupboards,
2No. 450mm deep laminated shelf units,
1No. 1200mm x 1210mm aluminium fixed window with no bottom reveal at bench level.
Provide 1No. 2410mm wide Garage door to new single Garage in lieu of standard with 450mm(d)x470mm(w) engaged pier to project under eaves.

Internal Option 07

Provide Home Office/Mud room option with Single car Garage in lieu of Double Garage, including:
Tiled Mud room with 870mm hinged door,
1No. built-in Linen cupboard with 2No. 820mm hinged doors and 1No. 450mm shelves
Home Office with built-in joinery, including:
1No. 600mm deep 32mm thick laminate desk,
2No. 800mm laminated cupboards,
2No. 300mm deep 60mm thick open shelves over desk,
2No. 820mm bi-parting cavity sliding doors,
1No. 2057mm x 610mm aluminium awning feature window.
Provide 1No. 2410mm wide Garage door to new single Garage in lieu of standard with 450mm(d)x470mm(w) engaged pier to project under eaves.

Garage Option 01

Provide extension to Garage to create Storage area including additional
1No. 2057mm x 850mm aluminium awning feature window
Increases area by 9.07m².
Increases width by 1680mm.

Garage Option 02

Provide extension to Garage to create Triple Car Garage including additional
1No. 2290mm x 2410mm garage door as per colour selection and relocated external door.
Increases width of the home by 3600mm.
Increases area of the home by 23.8m²

