

# KEYSTONE 37

4 3 2

Total squares 33sq

**B**  
SERIES

Minimum Lot Width  
**14.0m**

Minimum Lot Length  
**25.0m**



**Design Dimensions**  
10,310mm(W) x 18,230mm(L).

**Facade Choices**  
Fullerton, Huntington, Moorpark,  
Oakwood, Pallsades, Redlands, Riverside.  
Details based on Riverside façade floorplan (illustrated)

**DESIGN DIMENSIONS**

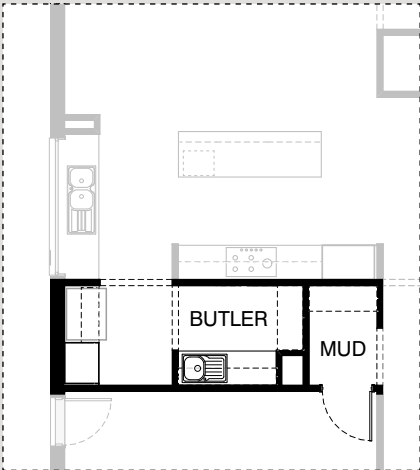
Residence	306.4m <sup>2</sup>	33sq
Garage	36.1m <sup>2</sup>	3.9sq
Porch	3.7m <sup>2</sup>	0.4sq
<b>Total</b>	<b>346.2m<sup>2</sup></b>	<b>37.3sq</b>

**Burbank**

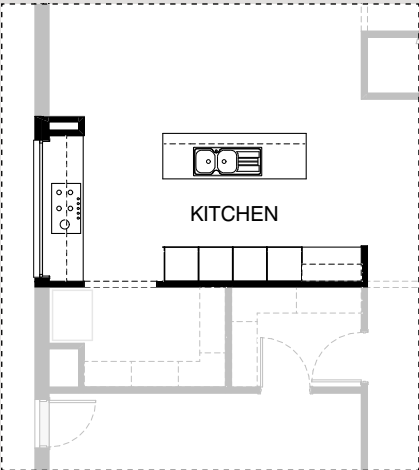
\*Copyright conditions. All photos and illustrations are representative only. Floor plans and specifications may be varied by Burbank without notice, the dimensions are diagrammatic only and a Building Contract with final drawings will display correct dimensions and detail. All designs are the property of Burbank and must not be used, reproduced, copied or varied, wholly or in part without written permission from an authorised Burbank representative. Copyright Burbank Australia Pty Ltd. ABN 91 007 099 872. Builders Registration Number CDB-U-52603.



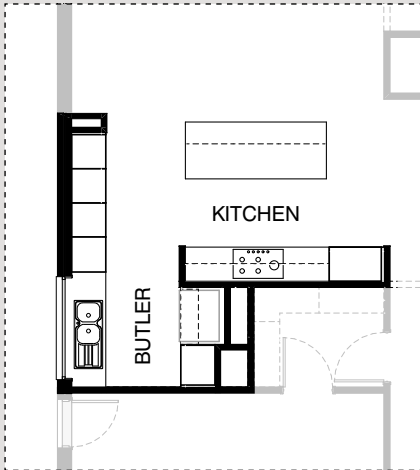
KITCHEN OPTIONS



K01

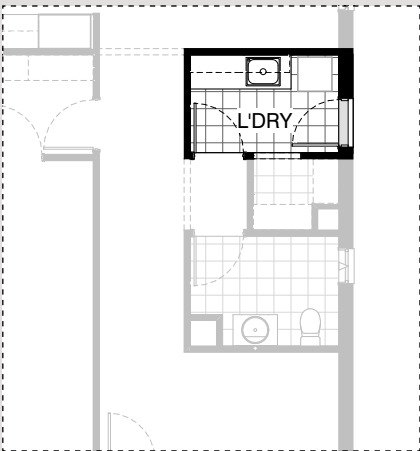


K02

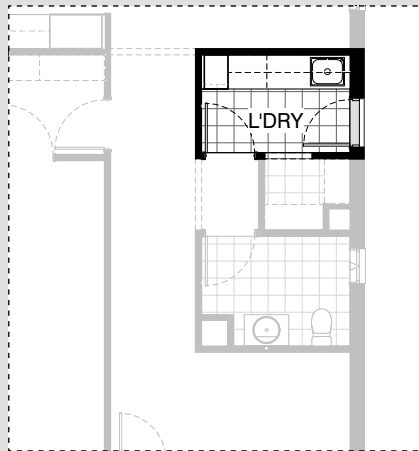


K03

LAUNDRY OPTIONS

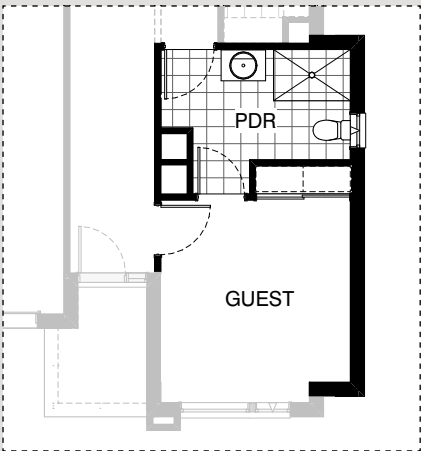


L01



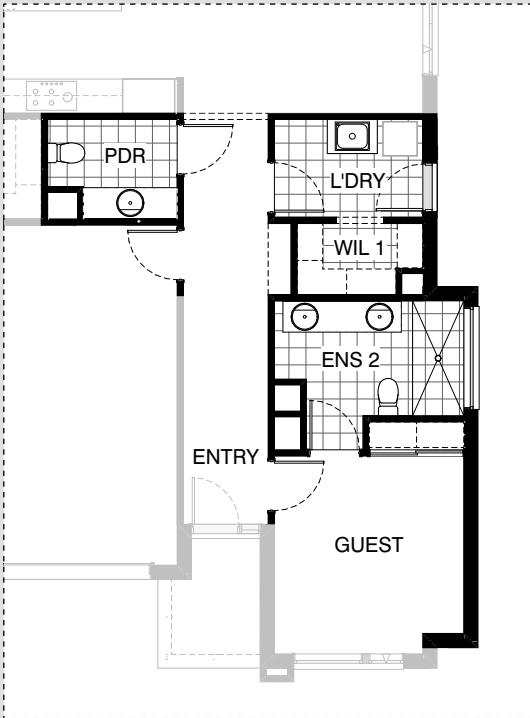
L02

INTERNAL OPTIONS

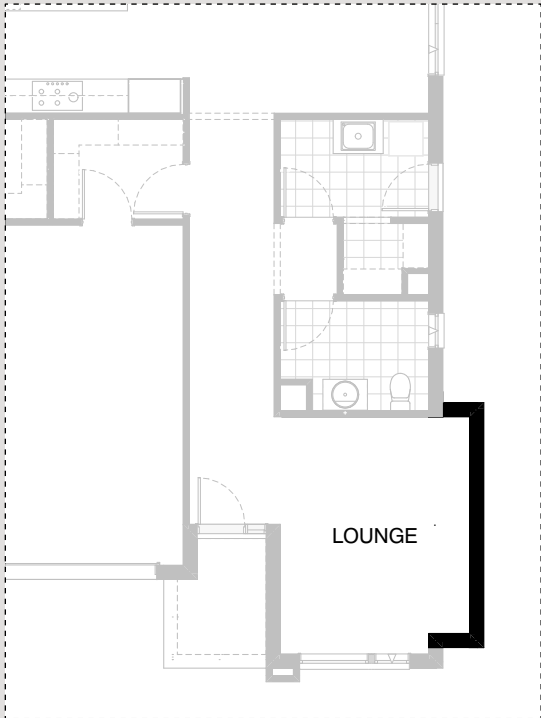


IN01

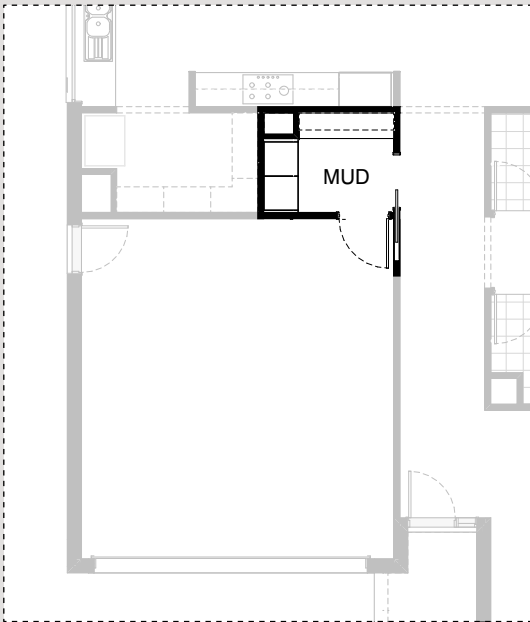
INTERNAL OPTIONS



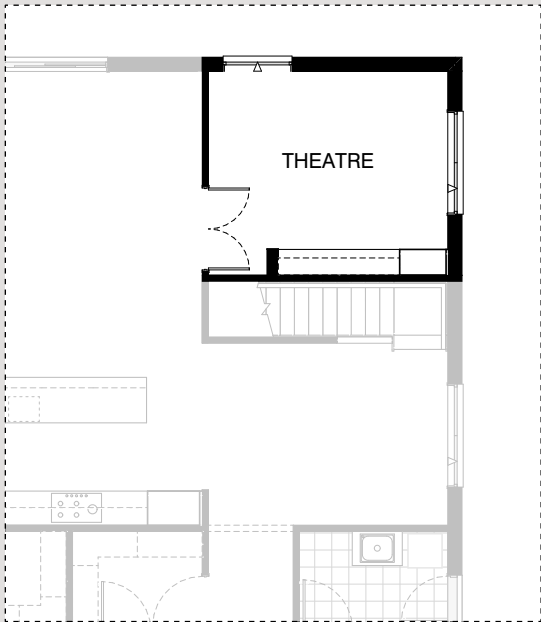
IN02



IN03

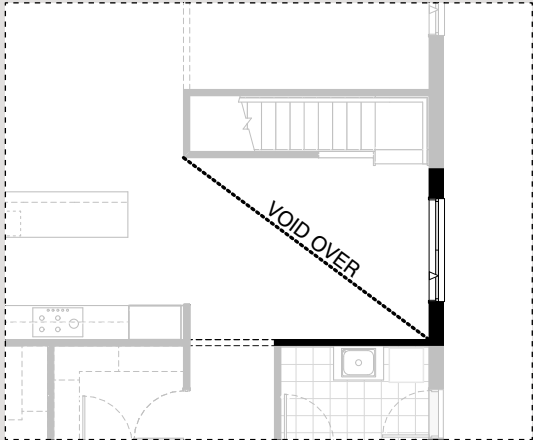


IN04

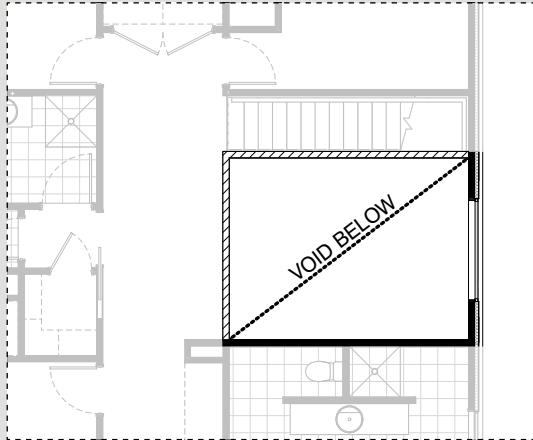


IN05

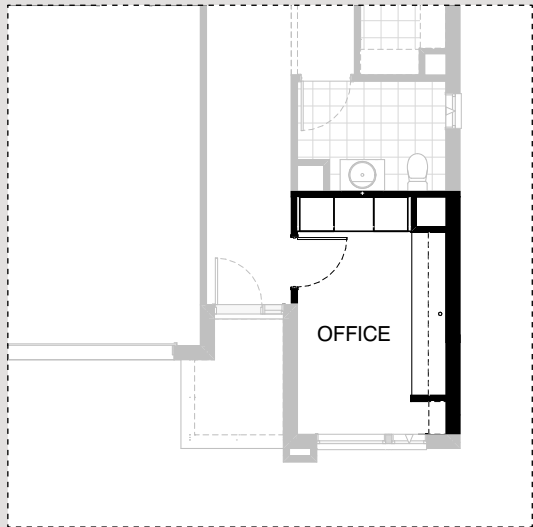
INTERNAL OPTIONS



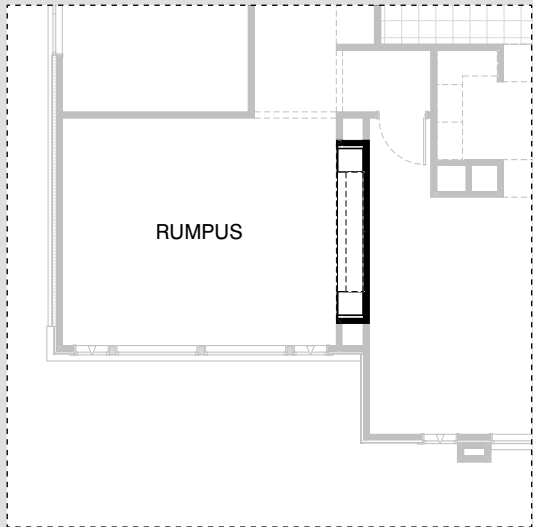
IN06 GF



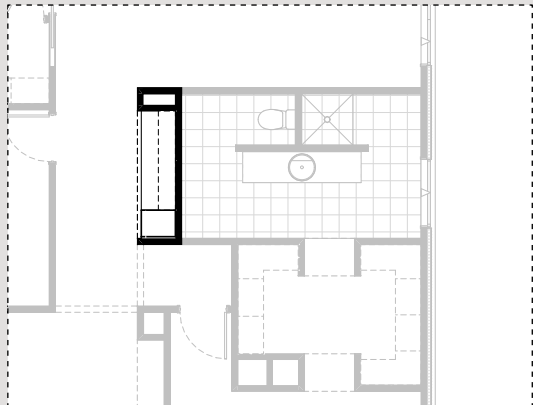
IN06 FF



IN07



IN08

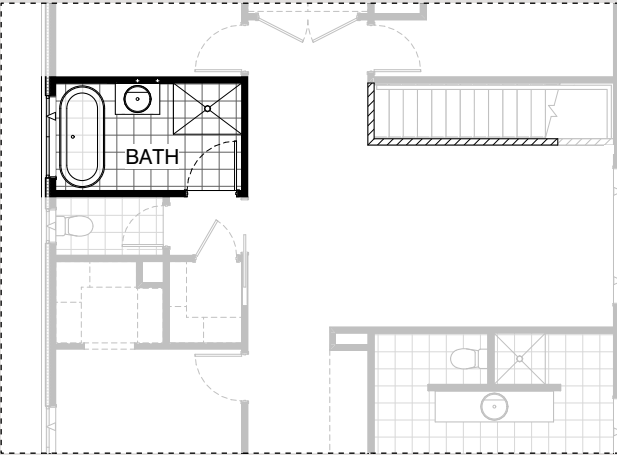


IN09

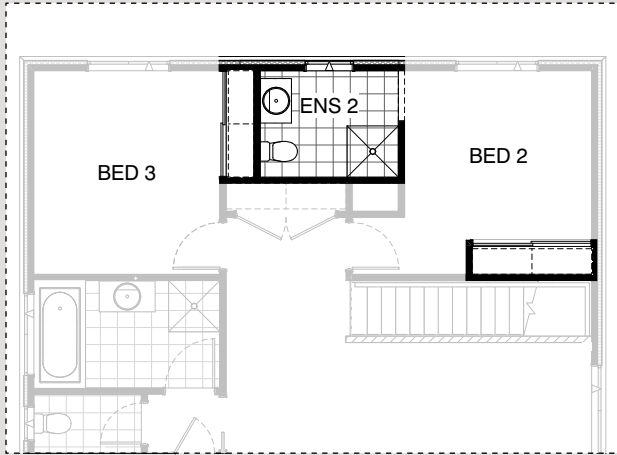




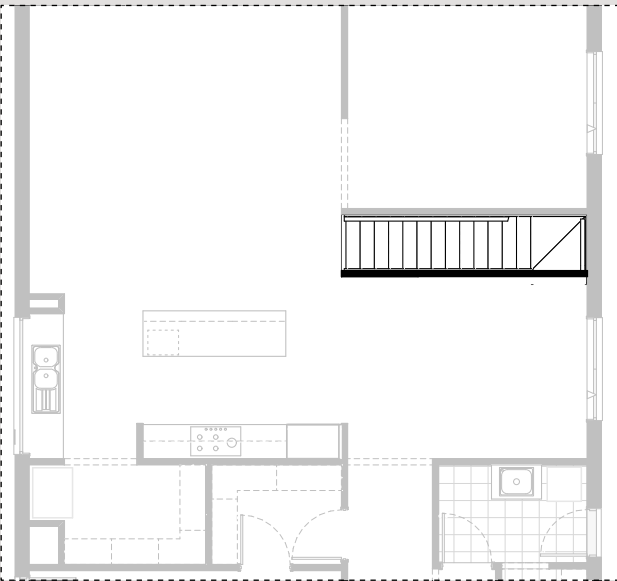
INTERNAL OPTIONS



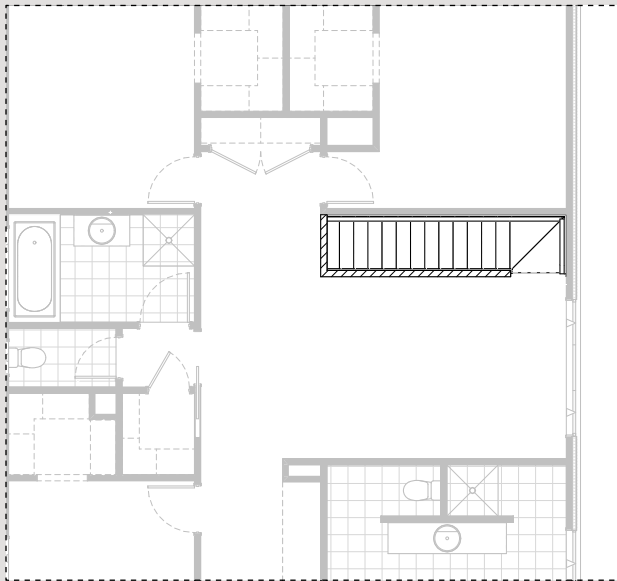
IN10



IN11



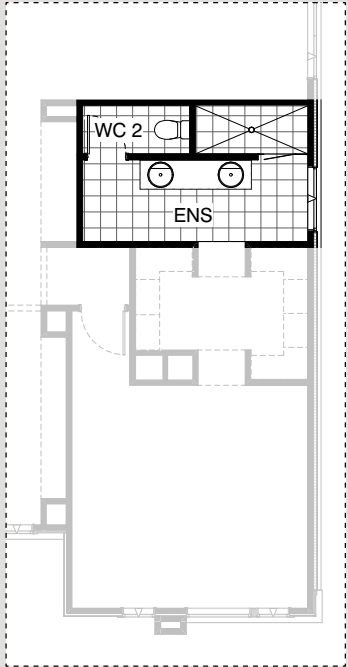
IN12 GF



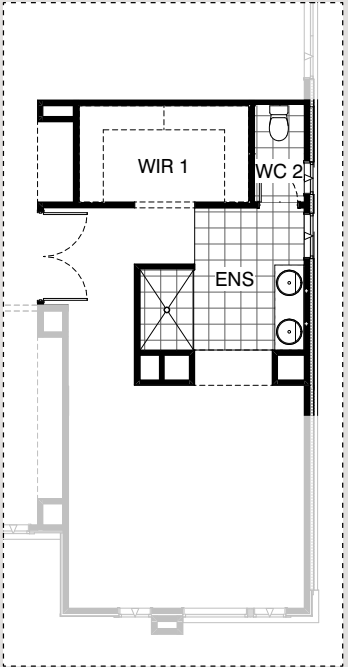
IN12 FF



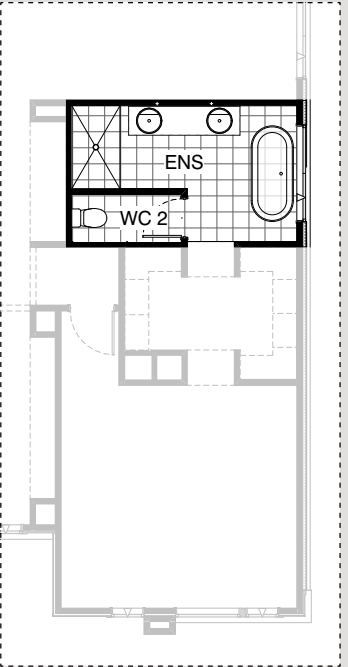
ENSUITE OPTIONS



EN01

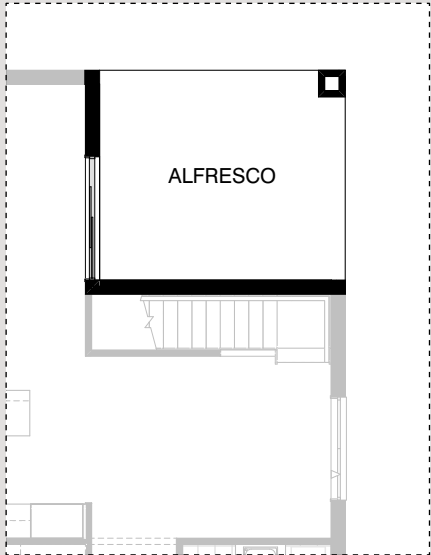


EN02



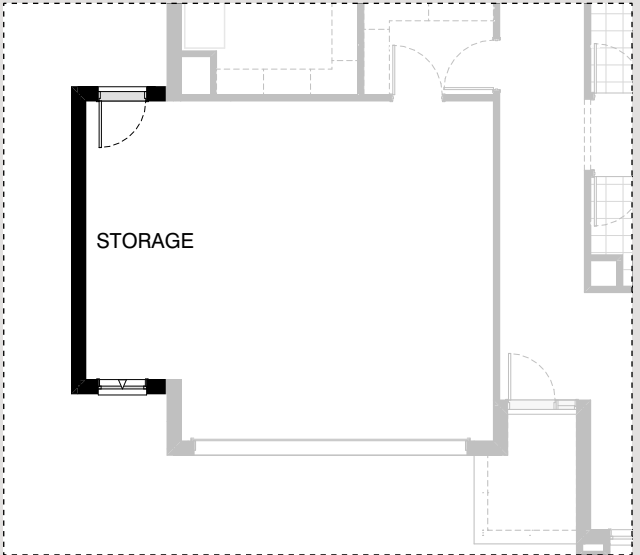
EN03

EXTERNAL OPTIONS



EX01

GARAGE OPTIONS



G01

# KEYSTONE 37

## OPTION DESCRIPTIONS

### Kitchen Option 01

Provide Butler's Pantry in lieu of Walk-in Pantry, including:  
single bowl sink,  
2No. 800mm base cupboards,  
2No. 300mm deep 60mm thick open shelves over sink,  
1No. 970mm laminated open shelf over Ref. space,  
1No. 700mm laminated Pantry unit,  
additional plaster-lined void.  
Mud room decreases by 1090mm to accommodate and provide 1020mm bulkhead in lieu of hinged door.

### Kitchen Option 02

Provide Kitchen upgrade option with sink relocated to island bench and cooktop relocated to exterior wall benchtop, including:  
900mm cooktop,  
900mm retractable rangehood,  
1No. dishwasher provision,  
1No. 450mm drawer unit,  
2No. 900mm base cupboards,  
2No. 800mm base cupboards,  
1No. 450mm base cupboard,  
2No. 800mm overhead cupboards,  
2No. 600mm laminated oven towers with microwave provisions,  
2No. 600mm laminated Pantry units,  
1No. 514mm x 2410mm aluminium fixed window with no bottom reveal in lieu of standard.  
Provides Study Nook in lieu of Pantry with 600mm deep 32mm thick laminated benchtop with  
2No. 300mm deep 60mm thick open shelves over.

### Kitchen Option 03

Provide Kitchen upgrade option with sink relocated to create Butler's Pantry in lieu of WIP, including:  
900mm cooktop,  
900mm retractable rangehood,  
1No. dishwasher provision,  
1No. 450mm drawer unit,  
2No. 900mm base cupboards,  
5No. 800mm base cupboards,  
2No. 800mm overhead cupboards,  
2No. 600mm laminated oven towers with microwave provisions,  
1No. 900mm laminated Pantry unit,  
1No. 700mm laminated Pantry unit,  
2No. 600mm laminated Pantry units,  
1No. 970mm laminated open shelf over Ref. space,  
1No. 1200mm x 1810mm aluminium fixed window with no bottom reveal in lieu of standard,  
island benchtop increases to 1000mm deep.

### Laundry Option 01

Provide Laundry upgrade with laminate base and overhead cupboards and inset trough, including:  
1No. 900mm base cupboard,  
1No. 900mm overhead cupboard,  
1No. 800mm base cupboard,  
1No. 800mm overhead cupboard,  
additional 32mm laminate benchtop and tiled splashback to suit.

### Laundry Option 02

Provide Laundry upgrade with laminate base and overhead cupboards and inset trough, including:  
1No. 700mm base cupboard,  
3No. 700mm overhead cupboards,  
1No. 400mm laminated Broom unit,  
additional 32mm laminate benchtop and tiled splashback to suit.  
Bench height increases to 950mm from FFL with open space beneath benchtop for washer and dryer side-by-side.

### Internal Option 01

Provide Guest Bedroom option with 2-way Powder in lieu of Office, including:  
Built-in Robe with sliding doors and 450mm shelf with hanging rail,  
additional 870mm and 820mm hinged doors to Guest room,  
additional 1350mm x 900mm tiled shower base,  
782mm vanity and single basin.  
Provide 1029mm x 610mm aluminium awning window to Powder room.  
Option pushes Ground floor exterior wall out by 720mm with tiled roof over.  
Option adds 4.57m<sup>2</sup> to total floor area.

### Internal Option 02

Provide Guest Bedroom option with dedicated Ensuite in lieu of Office and Powder, including:  
Built-in Robe with sliding doors and 450mm shelf with hanging rail,  
additional 2No. 870mm hinged doors to Guest,  
additional 2020mm x 900mm wall-to-wall tiled shower base,  
2082mm vanity with double basins and  
1No. 350mm x 1810mm aluminium fixed window over shower.  
Option pushes Ground floor exterior wall out by 720mm with tiled roof over.  
870mm hinged door to Laundry moves as shown and WIL increases with Key Drop with bulkhead over.  
Powder room is relocated to Mud room with 870mm hinged door,  
1No. 1582mm vanity, including 1 row tiling beneath mirror to suit wall-to-wall benchtop including returns in lieu of standard,  
870mm hinged door to Garage also moves.  
Option adds 4.57m<sup>2</sup> to total floor area.

### Internal Option 03

Provide Lounge in lieu of Office, including:  
Option pushes Ground floor exterior wall out by 720mm with tiled roof over.  
Option adds 3.10m<sup>2</sup> to total floor area.

### Internal Option 04

Provide built-in joinery to Mud room, including:  
450mm deep 32mm thick laminate benchtop,  
2No. 800mm T.V unit cupboards,  
2No. 300mm deep 60mm thick open shelves,  
2No. 600mm laminated cupboards.  
920mm cavity sliding door added to Mud room in lieu of hinged door.

### Internal Option 05

Provide Theatre in lieu of Living with built-in joinery, including:  
2No. 720mm hinged doors in lieu of bulkhead opening,  
450mm deep 32mm thick laminate benchtop,  
3No. 700mm T.V unit cupboards,  
2No. 300mm deep 60mm thick open shelves,  
1No. 800mm laminated cupboard,  
1No. 180mm plaster-lined nib wall.  
Provide 1200mm x 1810mm aluminium awning window in lieu of standard.

### Internal Option 06 GF

Provide double height Void over Meals area by removing Activity above.  
Provide 1No. 1800mm x 1810mm aluminium fixed window to First floor in lieu of standard,  
provide extension to 1020mm high dwarf wall balustrade.

### Internal Option 06 FF

Provide double height Void over Meals area by removing Activity above.  
Provide 1No. 1800mm x 1810mm aluminium fixed window to First floor in lieu of standard,  
provide extension to 1020mm high dwarf wall balustrade.



# KEYSTONE 37

## OPTION DESCRIPTIONS

### Internal Option 07

Provide built-in joinery to Office, including:  
600mm deep 32mm thick laminate benchtop,  
2No. 800mm overhead cupboards,  
3No. 400mm overhead open shelf units,  
1No. 700mm laminated cupboard,  
2No. 600mm laminated cupboards,  
1800mm high x 300mm wide laminated open shelving,  
Provide additional 870mm hinged door,  
plaster-lined void and nib wall.

### Internal Option 08

Provide built-in joinery to Rumpus, including:  
450mm deep 32mm thick laminate benchtop,  
2No. 300mm deep 60mm thick open shelves,  
3No. 700mm TV unit cupboards,  
2No. 400mm laminated cupboards and  
108mm deep bulkhead over.

### Internal Option 09

Provide built-in joinery to Study Nook, including:  
600mm deep 32mm thick laminate benchtop,  
2No. 300mm deep 60mm thick open shelves,  
1No. 450mm drawer unit under desk,  
1No. 450mm laminated cupboard and  
108mm deep bulkhead over.

### Internal Option 10

Provide Bathroom upgrade option, including:  
1No. 1780mm freestanding bath,  
1200mm x 900mm tiled shower base and  
782mm vanity with single basin in lieu of standard.

### Internal Option 11

Provide Ensuite option to Bed 2 in lieu of 2No. WIR, including:  
900mm x 900mm tiled shower base,  
782mm vanity with single basin, toilet pan,  
1No. 1029mm x 850mm aluminium awning window.  
Provide 2No. built-in Robes with 450mm shelving and hanging rail.

### Internal Option 12 GF

Alternate Stair layout.

### Internal Option 12 FF

Alternate Stair layout.

### Ensuite Option 01

Provide Ensuite upgrade option, including:  
1No. 2082mm vanity with double basins,  
2100mm x 900mm tiled shower base,  
720mm hinged door to create enclosed WC.

### Ensuite Option 02

Provide Ensuite upgrade option with re-arranged layout, including:  
1No. 1582mm vanity with 1590mm benchtop abutting one wall and double basins,  
1500mm x 1000mm wall-to-wall tiled shower base,  
enclosed WC with 720mm hinged door,  
1No. 1200mm x 610mm aluminium awning window to WC,  
1No. 1200mm x 850mm aluminium awning window to  
Ensuite in lieu of standard,  
relocated WIR with 3No. 450mm shelves,  
Provide 2No. 820mm hinged entry doors to Bed 1 in lieu of standard,  
Study Nook decreases to accommodate.

### Ensuite Option 03

Provide Ensuite upgrade option with re-arranged layout, including:  
1No. 1780mm freestanding bath,  
1No. 2082mm vanity with double basins,  
1550mm x 900mm wall-to-wall tiled shower base,  
enclosed WC with 720mm hinged door,  
1No. 1200mm x 1810mm aluminium awning window  
over bath in lieu of standard.

### External Option 01

Provide Alfresco to Ground floor in lieu of Living, including:  
structural concrete slab and additional 470mm x 470mm brick pier  
1No. 2095mm x 2170mm aluminium sliding door.

### Garage Option 01

Provide extension to Garage to create  
additional Storage area including:  
1No. 2057mm x 850mm aluminium awning feature window.  
Increases width of the home by 1680mm.  
Increases area of the home by 9.07m<sup>2</sup>.

