



**FLOORPLAN OPTIONS**

We personalise our floorplans. Talk to us about our huge range of ready-to-go design options or simply visit [www.burbank.com.au/south-australia](http://www.burbank.com.au/south-australia) for more details.

Listed details based on Sheffield facade floorplan (illustrated)

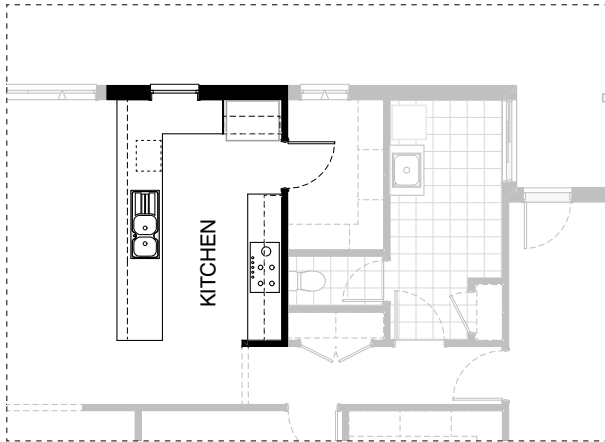
**Facades available:**

Sheffield, Aster, Eastwood,	
Hartford, Lancaster, Leawood,	
Newbury, Wiltshire	
<b>Overall home width</b>	<b>27.95m</b>
<b>Overall home length</b>	<b>12.71m</b>

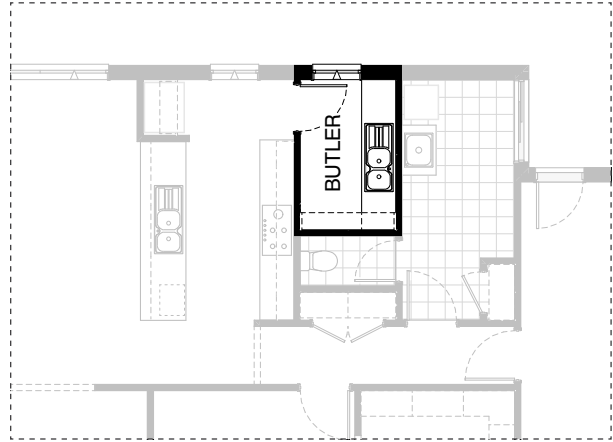
Residence	235.2m <sup>2</sup>	25.3sq
Garage	37.5m <sup>2</sup>	4.0sq
Verandah	3.2m <sup>2</sup>	0.3sq
Porch	6.6m <sup>2</sup>	0.7sq
<b>Total</b>	<b>282.5m<sup>2</sup></b>	<b>30.4sq</b>

\*Copyright conditions. All photos and illustrations are representative only. Floor plans and specifications may be varied by Burbank without notice, the dimensions are diagrammatic only and a Building Contract with final drawings will display correct dimensions and detail. All designs are the property of Burbank and must not be used, reproduced, copied or varied, wholly or in part without written permission from an authorised Burbank representative. Copyright Burbank Australia (SA) Pty Ltd. ABN 96 165 533 406. BLD 266709.

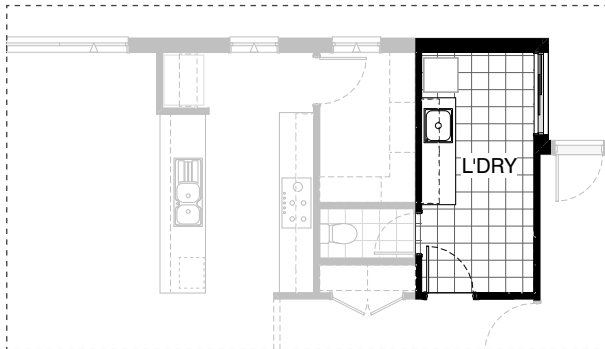
**Call 13 BURBANK**  
**Visit [burbank.com.au](http://burbank.com.au)**



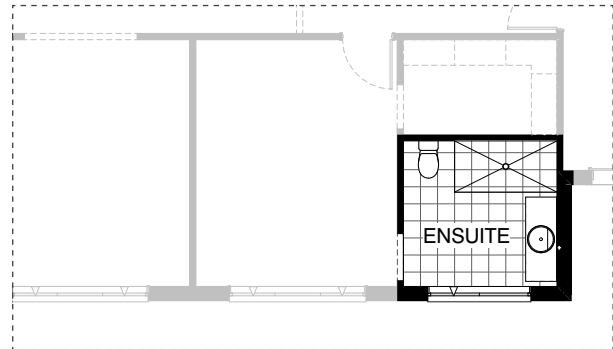
**K01**



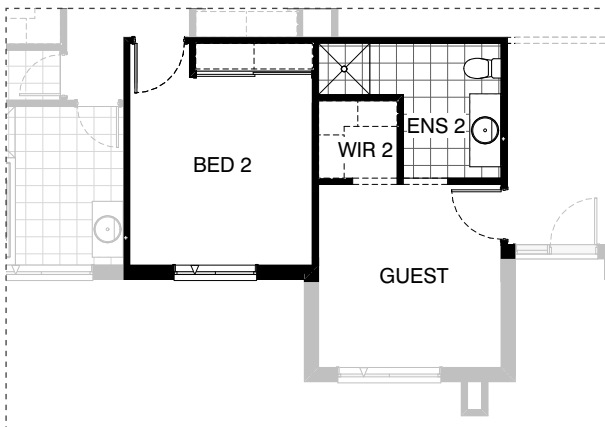
**K02**



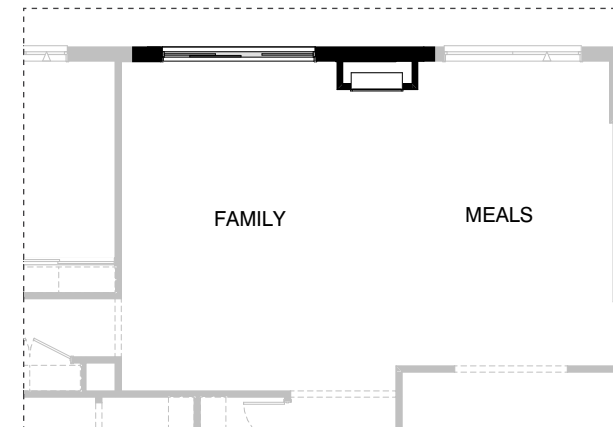
**L01**



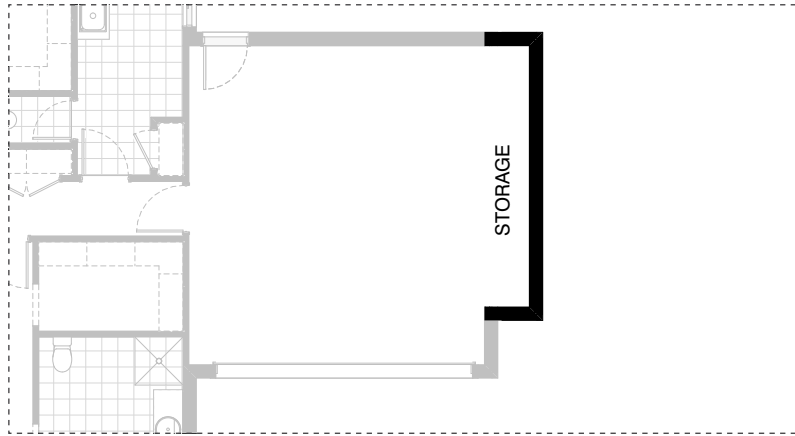
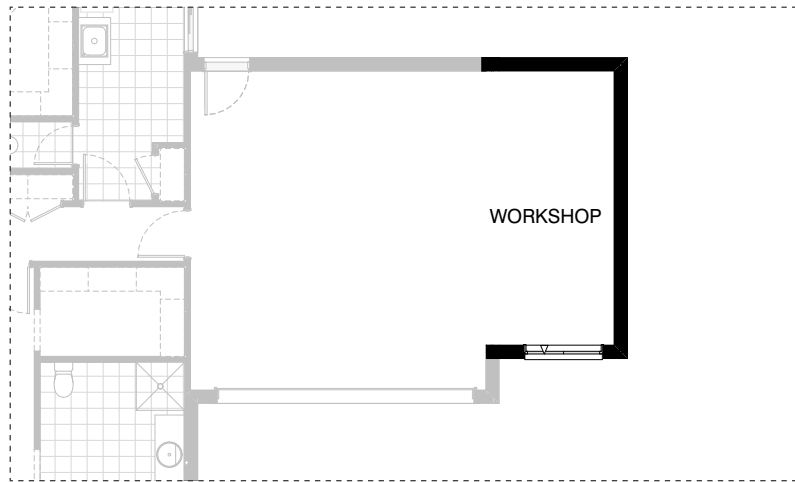
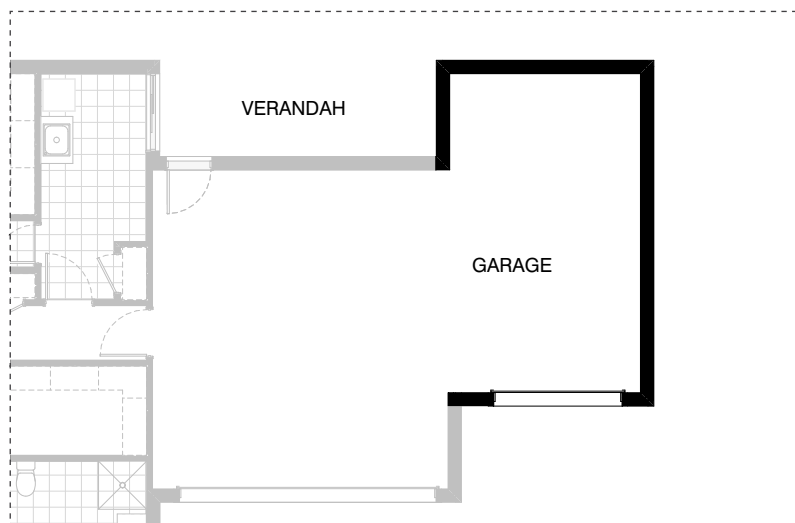
**EN01**



**IN01**



**IN02**

**G01****G02****G03**

**OPTION DESCRIPTIONS****K01 - Kitchen Option 01**

Provide 'L' shape Kitchen with additional  
2No. 800mm base cupboards,  
2No. 800mm overhead cupboards,  
1No. 900mm under bench oven with  
1No. 900mm retractable rangehood over,  
1No. 450mm base cupboard,  
1No. 1050mm blind carcass with 1No. 600mm door,  
1No. laminated MW provision,  
1No. laminated DW provision,  
2No. 900mm base cupboards and  
1No. 450mm drawers.  
Decrease Meals area by 150mm,  
relocate WIP hinged door and provide  
1No. 1200mm x 850mm aluminium fixed window  
with no bottom reveal in lieu of standard,  
additional tiled splashback and benchtop to suit.

**K02 - Kitchen Option 02**

Provide Butler's pantry in lieu of standard WIP with,  
2No. 800mm base cupboards,  
2No. 300mm base cupboards,  
5No. 1800mm high laminated open shelves,  
additional tiled splashback and benchtop  
to suit in lieu of standard.

**L01 - Laundry Option 01**

Provide Laundry upgrade including:  
laminated inset trough,  
2No. 900mm base cupboards,  
2No. 900mm overhead cupboards,  
additional tiled splashback and  
benchtop to suit.

**EN01 - Ensuite Option 01**

Provide Ensuite upgrade with  
900mm x 1800mm tiled shower base in lieu of standard.

**IN01 - Internal Option 01**

Provide Guest Bedroom with Ensuite in lieu of  
standard Study, WIR and WIL.  
Provide additional site built plaster lined Robe to Bed 2.  
1No. 900mm x 900mm wall to wall tiled shower base,  
1No. 1282mm wide vanity unit,  
toilet pan to Ensuite and  
2No. 800mm wide openings with bulkhead above.

**IN02 - Internal Option 02**

Provide Real Flame Inspire 900 gas fireplace,  
400mm off floor level in a 1400mm x 500mm  
boxed out plaster wall with a 4 sided black  
fascia to Family / Meals with capped gas point and  
relocate Family / Meals sliding door and window to suit.

**G01 - Garage Option 01**

Provide extension to Garage to create  
additional Storage area.  
Increases area by 4.53m<sup>2</sup>.  
Increases width by 840mm.

**G02 - Garage Option 02**

Provide extension to Garage to create Workshop area including  
1No. 2057mm x 1450mm aluminium awning feature window.  
Increases area by 13.51m<sup>2</sup>. Increases width by 2400mm.

**G03 - Garage Option 03**

Provide triple car Garage including  
1No. additional 2140mm x 2410mm  
garage door as per colour selection.  
remove 1No. timber post to Verandah  
and extend Verandah width to suit.  
Increases Verandah area by 6.07m<sup>2</sup>.  
Increases Garage area by 24.14m<sup>2</sup>.  
Increases width by 3600mm.