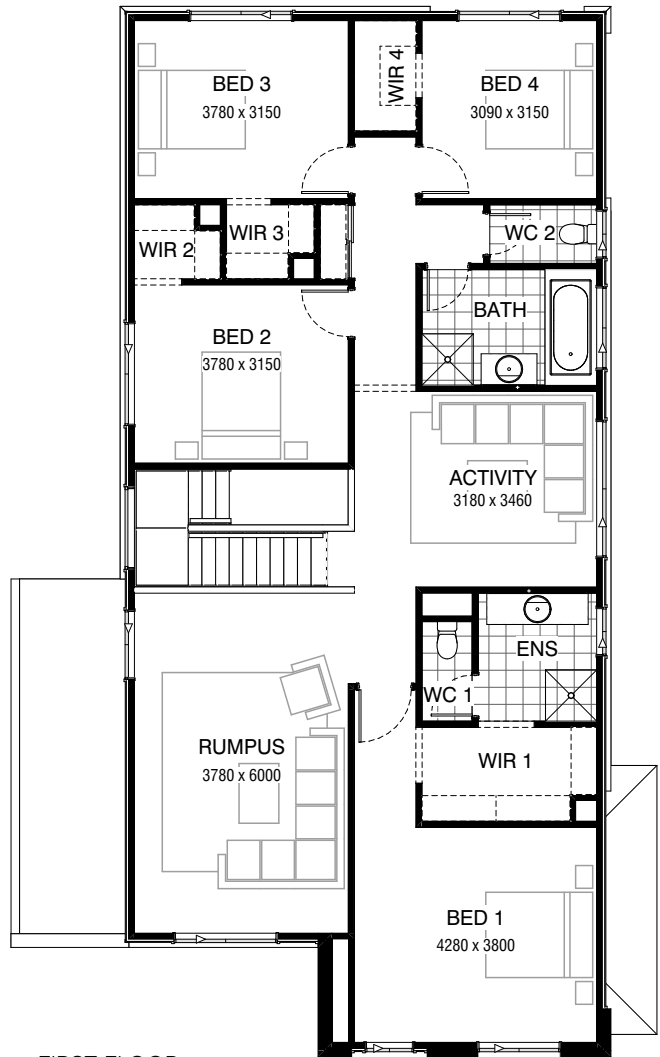


GROUND FLOOR



FIRST FLOOR

FLOORPLAN OPTIONS

We personalise our floorplans. Talk to us about our huge range of ready-to-go design options.

Listed details based on Traditional facade floorplan (illustrated)

Facades available:

- Kingston, Kingsley, Bradshaw
- Bradbury, Nouveau, Traditional
- Urban

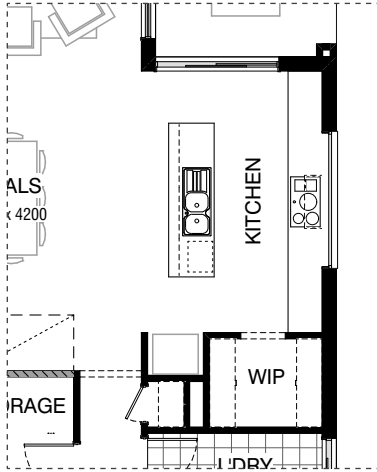
Overall home width 10,910mm

Overall home length 18,470 mm

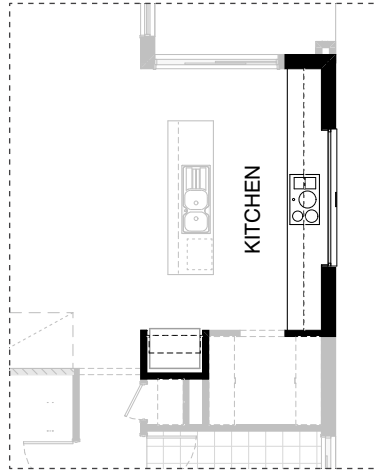
Grd Floor	110.9m ²	11.9sq
First Floor	145.6m ²	15.7sq
Garage	39.8m ²	4.3sq
Porch	3.7m ²	0.4sq
Alfresco	11.4m ²	1.2sq
Total	311.4m²	33.5sq

*Copyright conditions. All photos and illustrations are representative only. Floor plans and specifications may be varied by Burbank without notice, the dimensions are diagrammatic only and a Building Contract with final drawings will display correct dimensions and detail. All designs are the property of Burbank and must not be used, reproduced, copied or varied, wholly or in part without written permission from an authorised Burbank representative. Copyright Burbank Australia (QLD) Pty Ltd. ABN 77 103 014 615. QBCC 1046544.

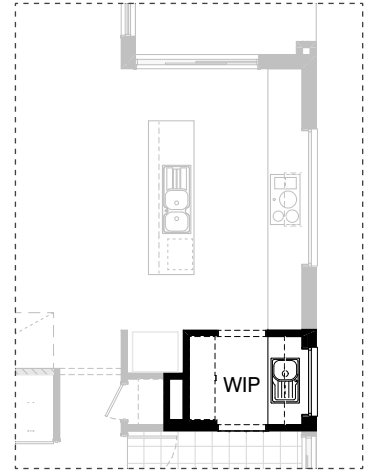
Call 13 BURBANK
Visit burbank.com.au



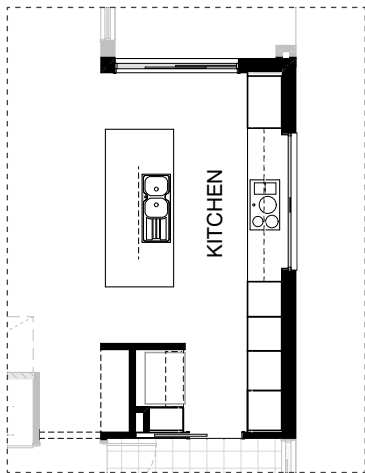
Master Kitchen Design



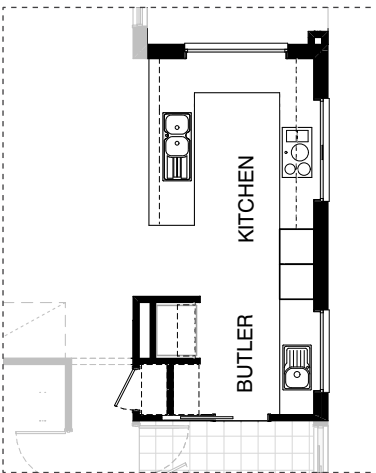
K01



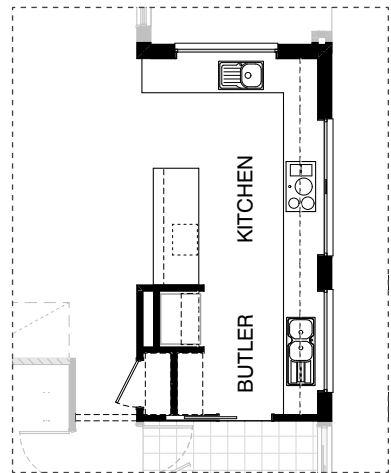
K02



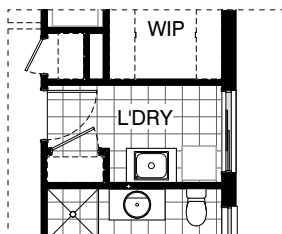
K03



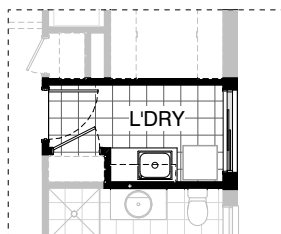
K04



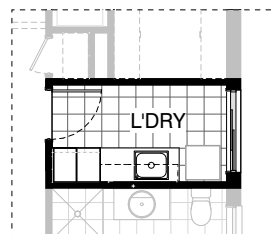
K05



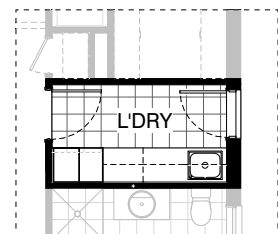
Master Laundry Design



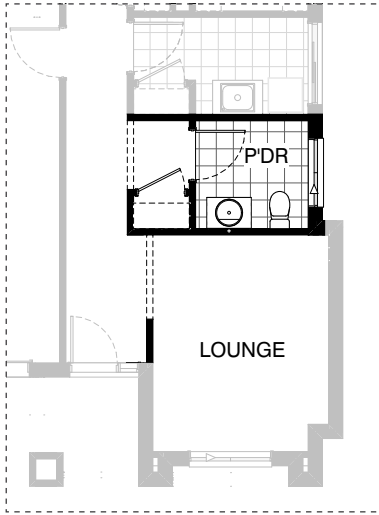
L01



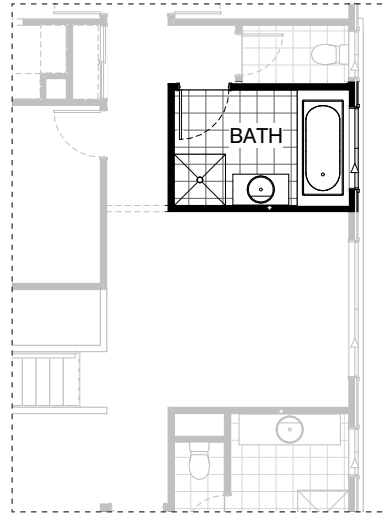
L02



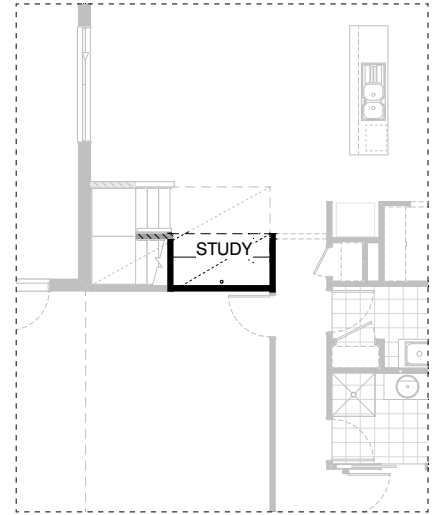
L03



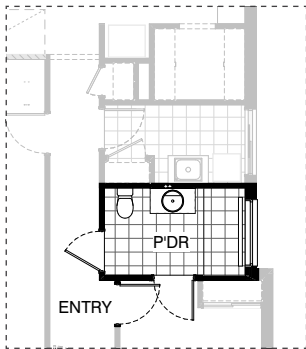
IN01 GF



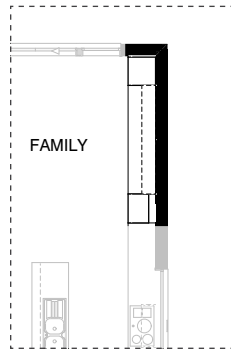
IN01 FF



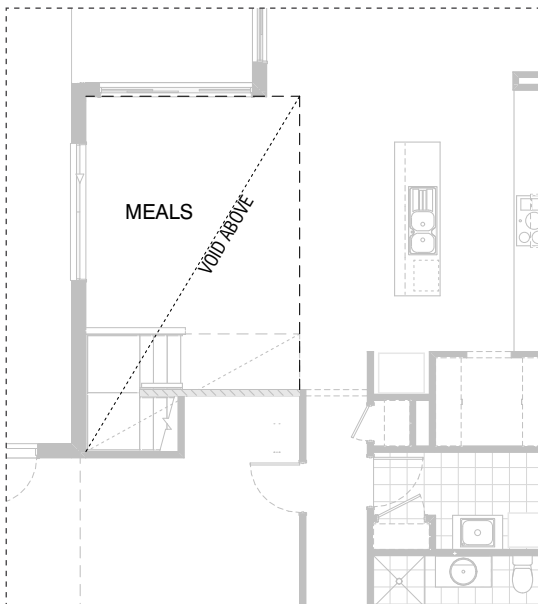
IN02



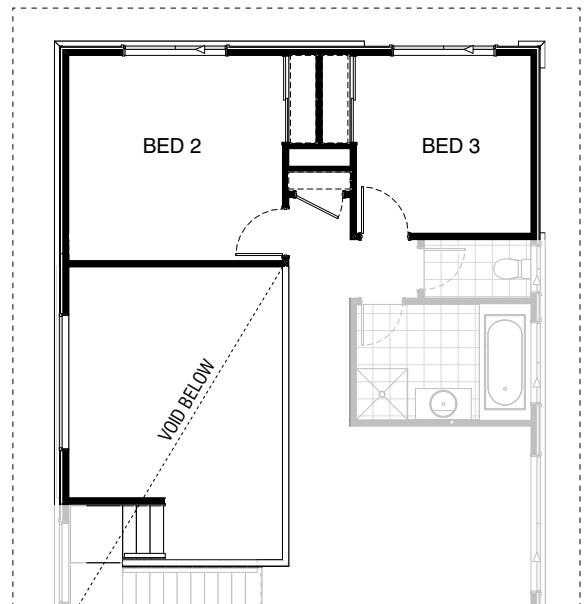
IN03



IN04

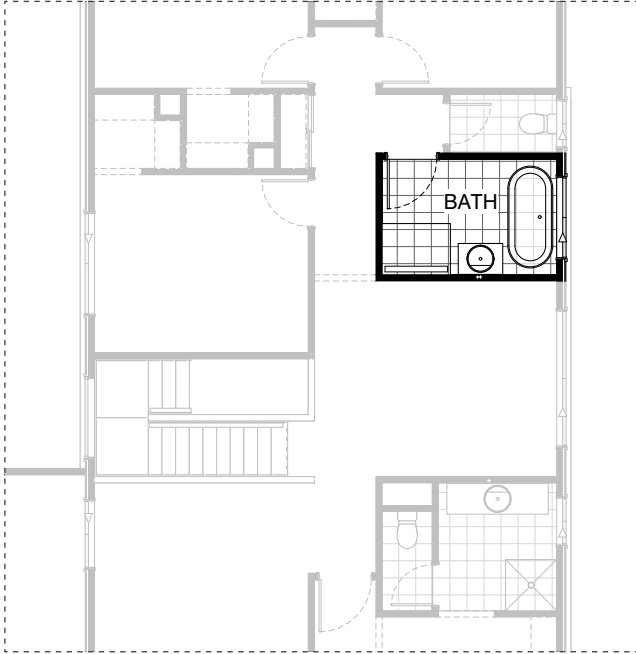


IN05 GF



IN05 FF

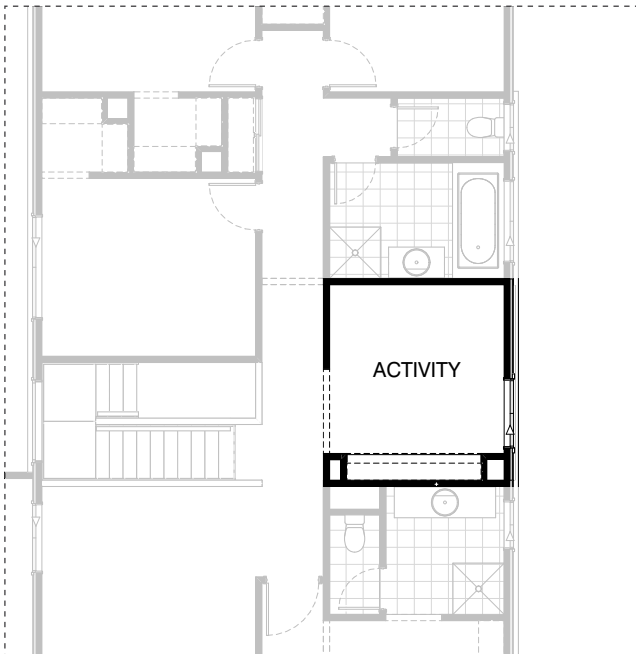
*Copyright conditions. All photos and illustrations are representative only. Floor plans and specifications may be varied by Burbank without notice, the dimensions are diagrammatic only and a Building Contract with final drawings will display correct dimensions and detail. All designs are the property of Burbank and must not be used, reproduced, copied or varied, wholly or in part without written permission from an authorised Burbank representative. Copyright Burbank Australia (QLD) Pty Ltd. ABN 77 103 014 615. QBCC 1046544.



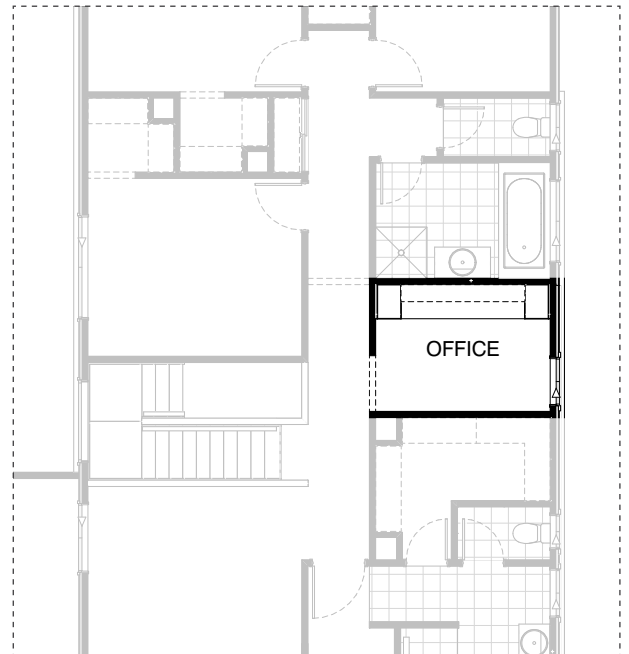
IN06



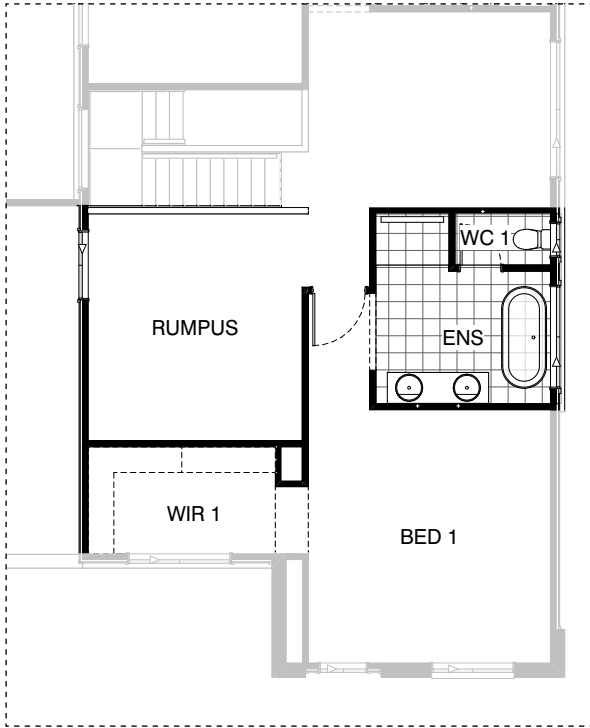
IN07



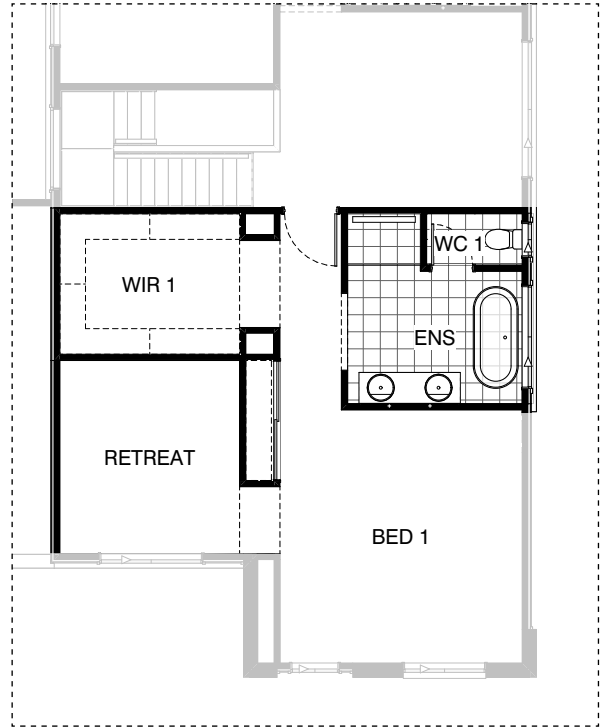
IN08



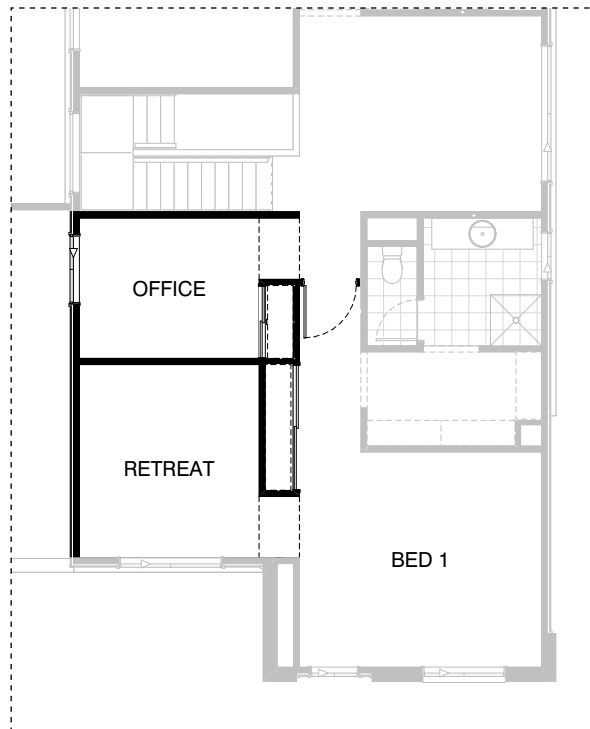
IN09



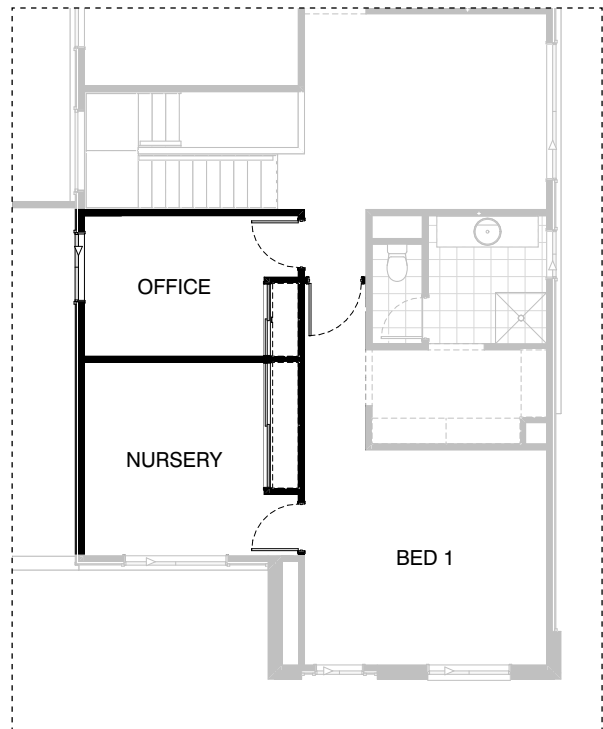
IN10



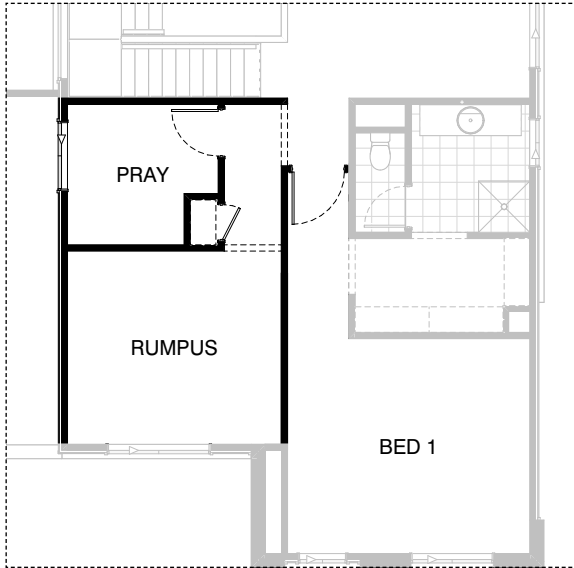
IN11



IN12



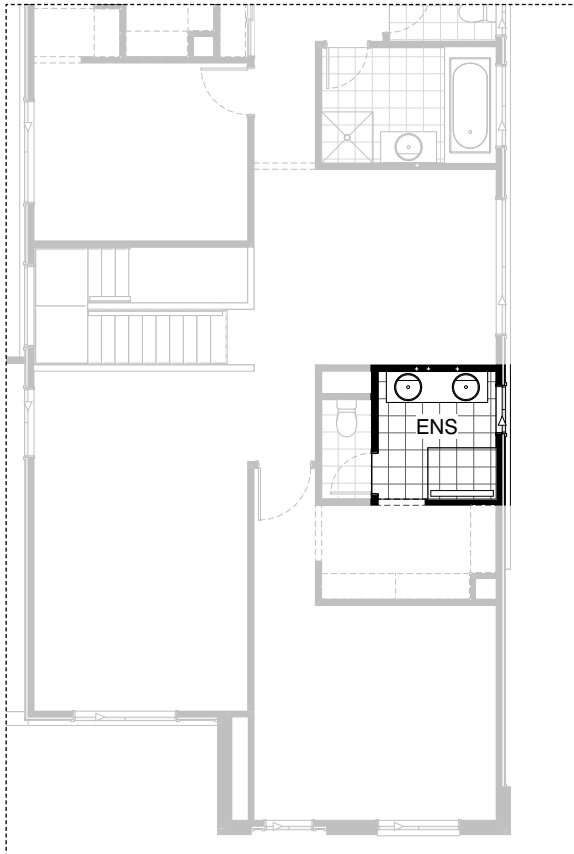
IN13



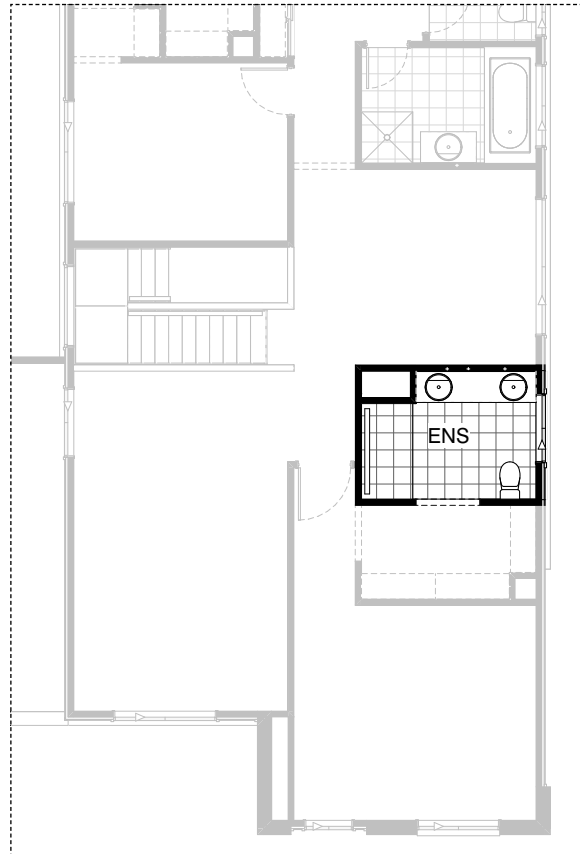
IN14



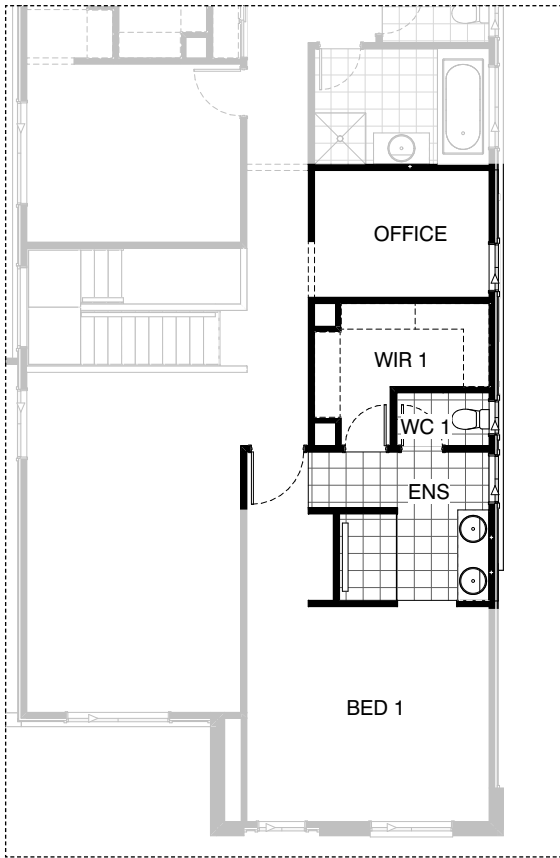
IN15



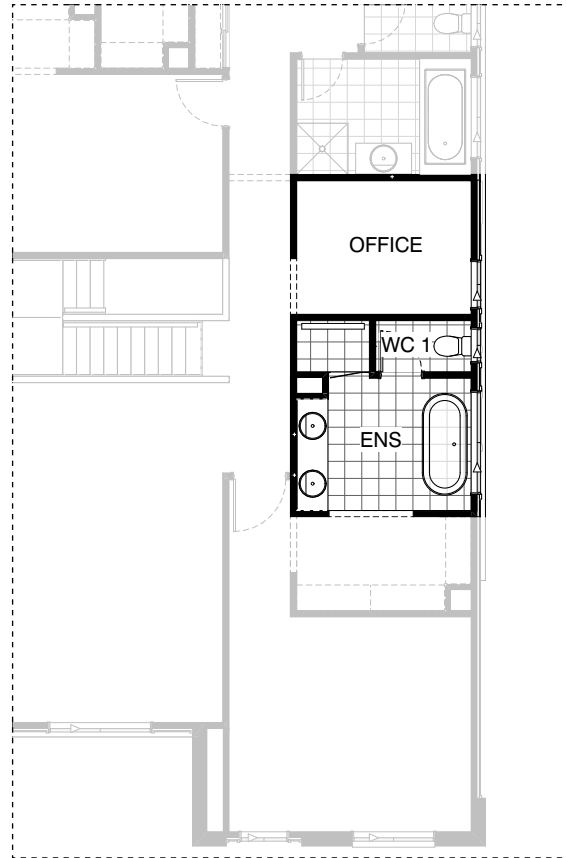
EN01



EN02



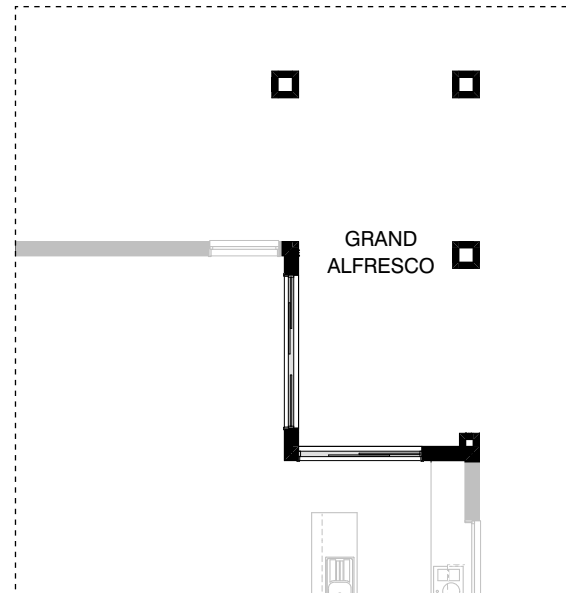
EN03



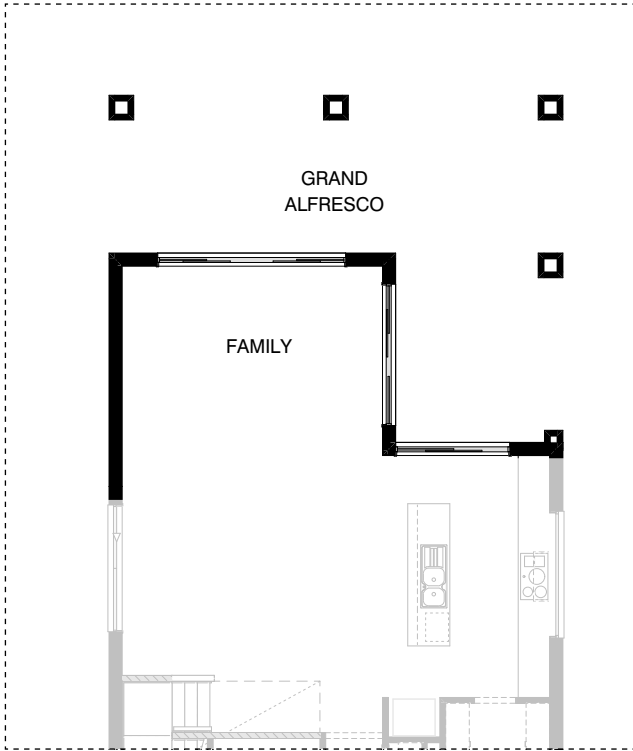
EN04



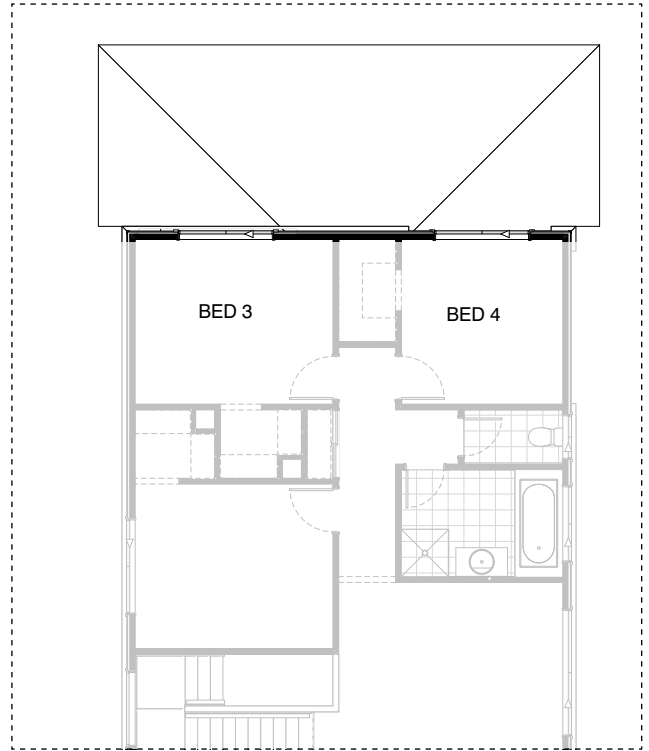
EX01



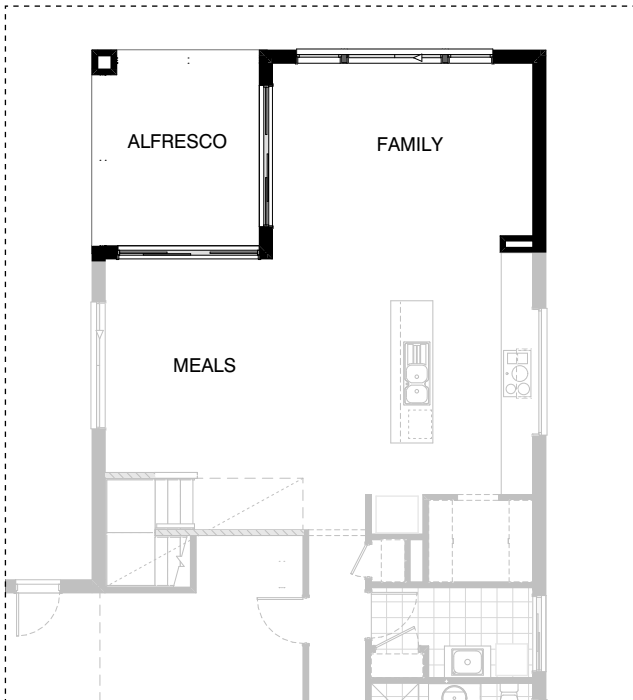
EX02



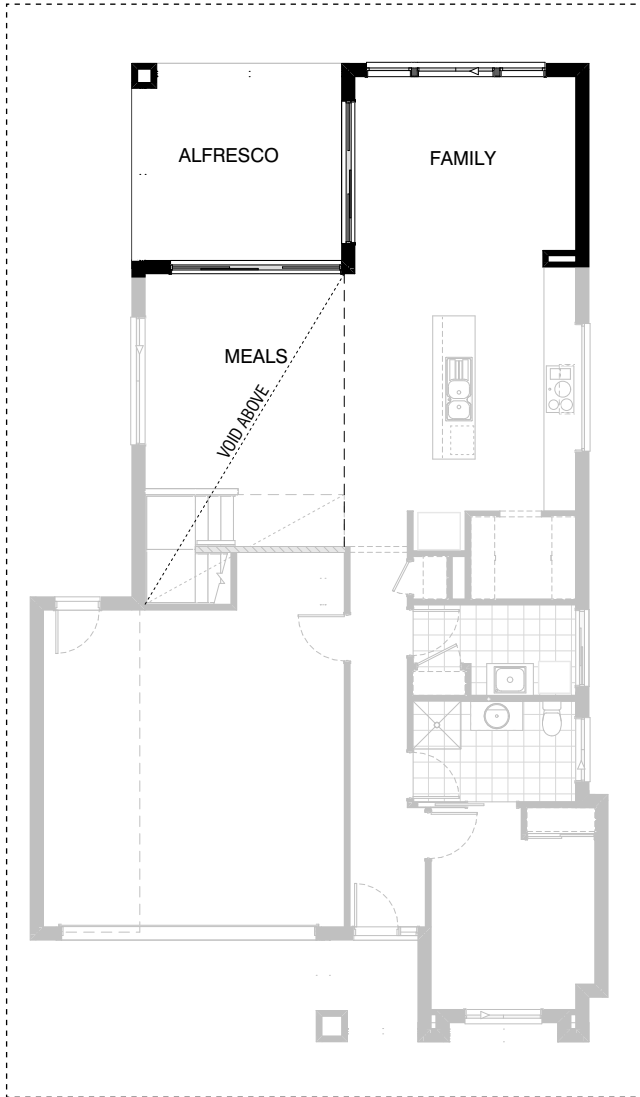
EX03 GF



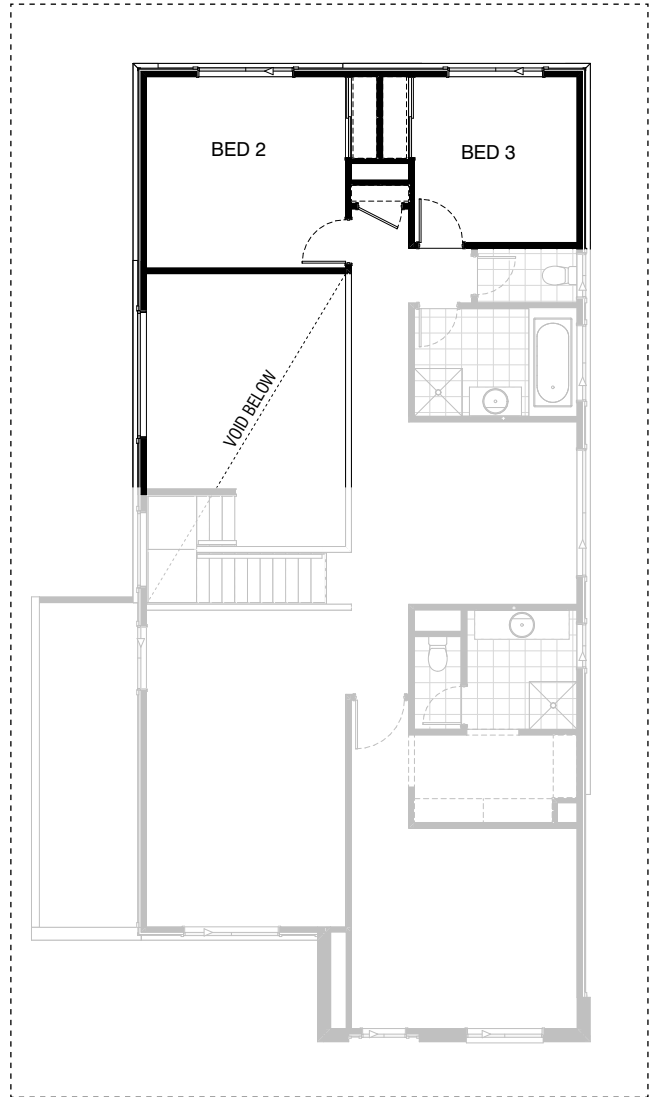
EX03 FF



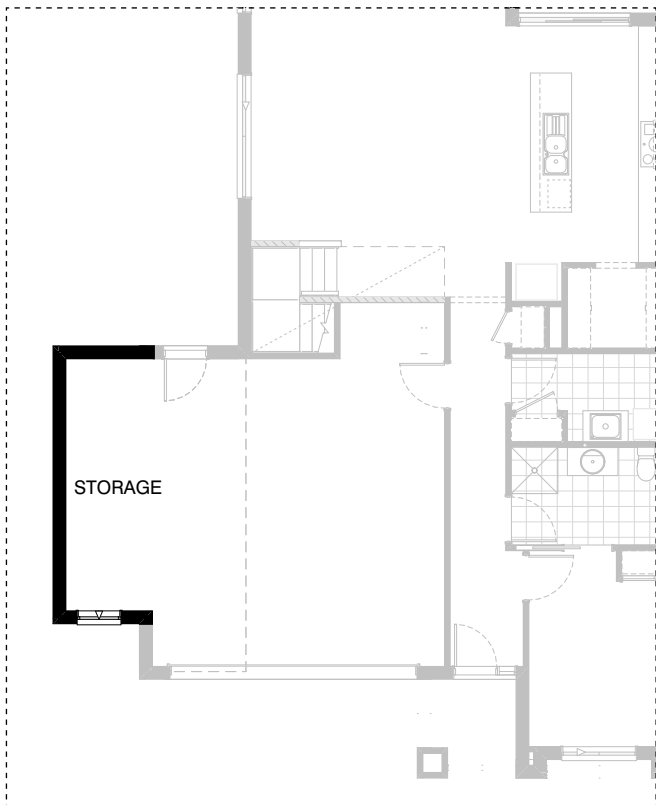
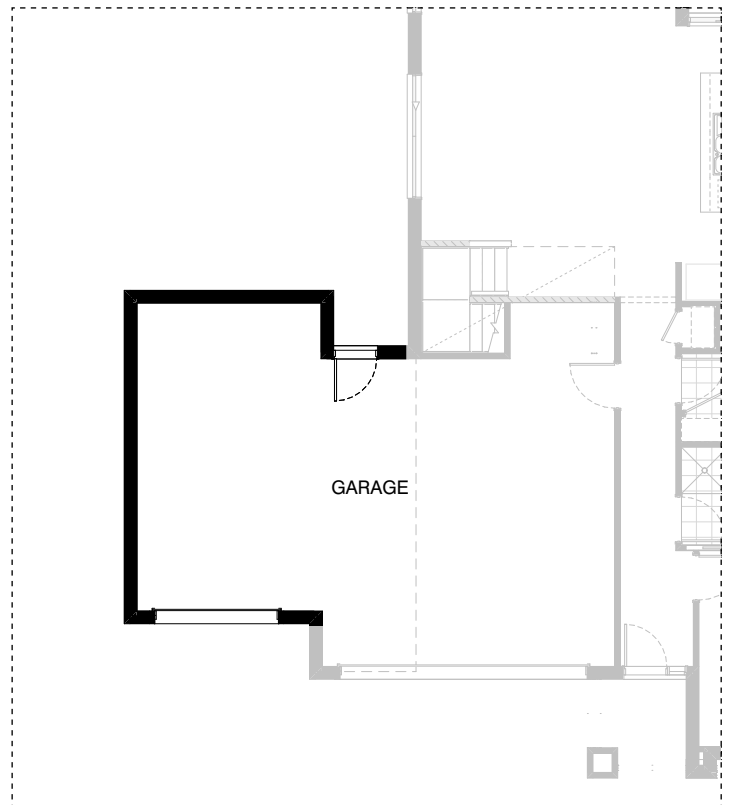
EX04



EX05 GF



EX05 FF

**G01****G02**

OPTION DESCRIPTIONS**K01 - Kitchen Option 01**

Provide Kitchen upgrade option, including: 4No. 900mm overhead cupboards, 1No. 900mm open shelf over Ref space.

K02 - Kitchen Option 02

Provide Butler's Pantry in lieu of Walk-in Pantry, including: 32mm laminate benchtop, single bowl sink, 1No. 800mm base cupboard, 2No. 350mm base cupboards, 1No. 800mm overhead cupboard, 2No. 350mm overhead cupboards, 1No. 720mm cavity sliding door through to Laundry, additional 514mm x 1210mm aluminium fixed window with no bottom reveal.

K03 - Kitchen Option 03

Provide Kitchen upgrade option with 1200mm deep island bench and relocated Ref space, including: 1No. 900mm retractable rangehood, 1No. 450mm drawer unit, 1No. dishwasher provision, 4No. 900mm base cupboards, 1No. 700mm base cupboard, 2No. 600mm base cupboards facing Meals, 2No. 900mm overhead cupboards, 2No. 600mm oven towers with microwave provisions, 1No. 970mm open shelf over Ref. space, 1No. 900mm full height laminate cupboard, 2No. 700mm full height laminate cupboards, 1No. 400mm full height laminate cupboard beside Ref. space, Provide 720mm cavity sliding door through to Laundry.

K04 - Kitchen Option 04

Provide U-shaped Kitchen upgrade option including Butler's Pantry in lieu of Walk-in Pantry. Kitchen includes: 900mm retractable rangehood, 900mm electric cooktop, 450mm drawer unit, dishwasher provision, 4No. 900mm base cupboards, 2No. 900mm corner base cupboards, 1No. 300mm base cupboard, 1No. 900mm overhead cupboard, 1No. 800mm overhead cupboard, 1No. 350mm overhead cupboard, 2No. 600mm oven towers with microwave provisions, 1No. double bowl sink, 1No. 1200mm x 1810mm aluminium fixed window with no bottom reveal, 1No. 514mm x 1810mm aluminium fixed window with no bottom reveal, additional benchtop and tiled splashback. Butler's Pantry includes: 2No. 800mm base cupboards, 1No. 400mm base cupboard, 1No. 900mm open shelf over Ref. space, single bowl sink, additional 1200mm x 1450mm aluminium fixed window with no bottom reveal. Provide 820mm cavity sliding door through to Laundry. 4No. 450mm shelves to Butler's Pantry with additional benchtop and tiled splashback to suit. Relocate plumbing stack and extend Coats cupboard with 720mm hinged door in lieu of standard.

Note:

Option not available with Internal04, External01, External04, External05.

K05 - Kitchen Option 05

Provide L-shaped Kitchen upgrade option including Butler's Pantry in lieu of Walk-in Pantry. Kitchen includes: 900mm retractable rangehood, 900mm electric cooktop, 900mm under bench oven, 450mm drawer unit, microwave provision, 5No. 900mm base cupboards, 1No. 900mm corner base cupboard, 1No. 350mm base cupboard, 2No. 900mm overhead cupboards, 1No. 800mm overhead cupboard, 1No. single bowl sink 1No. 1200mm x 1810mm aluminium fixed window with no bottom reveal, additional benchtop and tiled splashback. Butler's Pantry includes: 2No. 900mm base cupboards, dishwasher provision, 1No. 150mm base laminate wine rack, 2No. 900mm overhead cupboards, 1No. 800mm overhead cupboard, 1No. 900mm open shelf over Ref. space, double bowl sink, additional 514mm x 1810mm aluminium fixed window with no bottom reveal. Provide 820mm cavity sliding door through to Laundry. 4No. 450mm shelves to Butler's Pantry with additional benchtop and tiled splashback to suit. Relocate plumbing stack and extend Coats cupboard with 820mm hinged door in lieu of standard. Note: Option not available with Internal04, External01, External04, External05

L01 - Laundry Option 01

Provide Laundry upgrade with laminate base and overhead cupboards and stainless steel inset trough, including: 1No. 700mm base cupboard, 1No. 400mm base cupboard, 1No. 700mm overhead cupboard, 1No. 400mm overhead cupboard, 32mm laminate benchtop and tiled splashback to suit.

L02 - Laundry Option 02

Provide Laundry upgrade with laminate base and overhead cupboards and stainless steel inset trough, including: 1No. 900mm base cupboard, 1No. 450mm base cupboard, 1No. 900mm overhead cupboard, 1No. 450mm overhead cupboard, 1No. 400mm full height laminate Linen cupboard, 1No. 400mm full height laminate Broom cupboard, 32mm laminate benchtop and tiled splashback to suit. Remove plaster-lined Linen cupboard.

L03 - Laundry Option 03

Provide Laundry upgrade with laminate base and overhead cupboards and stainless steel inset trough, including: 1No. 700mm base cupboard, 3No. 700mm overhead cupboards, 1No. 400mm full height laminate Linen cupboard with 5No. 450mm shelves, 1No. 450mm full height broom cupboard, 32mm laminate benchtop and tiled splashback to suit. Bench height increases to 950mm from FFL with open space beneath benchtop to store washer and dryer side-by-side. Provide 820mm hinged entry door in lieu of standard sliding door. Remove plaster-lined Linen cupboard.

IN01 GF - Internal Option 01 Ground Floor

Provide Lounge to the front of the home in lieu of Guest bedroom. Remove hinged door and built-in Robe. Remove shower and cavity sliding door from Powder and provide 782mm vanity in lieu of standard. Provide Linen cupboard with 820mm hinged door and 4No. 450mm shelving. Bathroom on the first floor to be updated in line with NCC requirements. Shower to have recessed tiled base and hinged door to be 870mm.

Note:

Option not available with Internal03.

IN01 FF - Internal Option 01 First Floor

Provide Lounge to the front of the home in lieu of Guest bedroom. Remove hinged door and built-in Robe. Remove shower and cavity sliding door from Powder and provide 782mm vanity in lieu of standard. Provide Linen cupboard with 820mm hinged door and 4No. 450mm shelving. Bathroom on the first floor to be updated in line with NCC requirements. Shower to have recessed tiled base and hinged door to be 870mm.

Note:

Option not available with Internal03.

IN02 - Internal Option 02

Provide Study Nook facing the Meals in lieu of Storage area to Garage, with built-in joinery, including: 600mm deep 32mm thick laminate benchtop desk, 1No. 450mm wide drawer unit under desk.

IN03 - Internal Option 03

Provide upgrade option to Guest Powder, including: swapped location of shower and WC, 1900mm x 900mm tiled shower base with grate drain and 350mm x 1450mm aluminium sliding window over in lieu of standard. Hinged door flipped to swing out so WC complies with NCC requirements. 720mm cavity sliding door swaps to 720mm hinged door.

Note:

Option not available with Internal01.

IN04 - Internal Option 04

Provide built-in joinery option to Family, including: 600mm deep 32mm thick benchtop, 2No. 800mm tv units, 1No. 700mm tv unit, 1No. 600mm full height laminate cupboard, 1No. 600mm (434mm deep) full height laminate cupboard, 2No. 300mm deep 60mm thick open shelves over.

Note:

Option only available with External04, External05.

IN05 GF - Internal Option 05 Ground Floor

Provide double-height Void over Meals area and delete Bed 2 above. Provide an extension to the dwarf wall balustrade as shown. Delete Walk-in Robes to Beds 2, 3 and 4 and provide 2No. built-in Robes with sliding doors. Relocate heating stack and Linen closet with 1No. 820mm hinged door in lieu of standard. Provide 1200mm x 2410mm aluminium fixed window to new Void in lieu of standard.

Note:

Option not available with External04, External05.

IN05 FF - Internal Option 05 First Floor

Provide double-height Void over Meals area and delete Bed 2 above. Provide an extension to the dwarf wall balustrade as shown. Delete Walk-in Robes to Beds 2, 3 and 4 and provide 2No. built-in Robes with sliding doors. Relocate heating stack and Linen closet with 1No. 820mm hinged door in lieu of standard. Provide 1200mm x 2410mm aluminium fixed window to new Void in lieu of standard.

Note:

Option not available with External04, External05.

IN06 - Internal Option 06

Provide Bathroom upgrade option, including: 1780mm freestanding bath, 1200mm x 900mm tiled shower base with grate drain, 782mm vanity with single basin, 870mm hinged door in lieu of standard.

IN07 - Internal Option 07

Provide 5th Bedroom option in lieu of Activity to First Floor, including: additional stud and plaster wall with 820mm hinged door, built-in Robe with sliding doors and 450mm shelf with hanging rail, 1200mm x 1810mm aluminium sliding window in lieu of standard, relocated bulkhead to Passage. Option takes 140mm from Bathroom to accommodate.

Note:

Option not available with Ensuite03, Ensuite04, Internal08, Internal09.

IN08 - Internal Option 08

Provide built-in joinery to Activity to First Floor, including: 450mm deep 32mm thick benchtop, 2No. 800mm TV units, 1No. 700mm TV unit, 2No. 300mm deep 60mm thick open shelves over, 2No. plaster-lined voids with bulkhead over. Provide 2057mm x 1210mm aluminium sliding window in lieu of standard.

Note: Option not available with Ensuite03, Ensuite04, Internal07, Internal09.

IN09 - Internal Option 09

Provide built-in joinery to Home Office to First Floor, including: 600mm deep 32mm thick benchtop, 2No. 400mm full height laminate cupboards, 2No. 300mm deep 60mm thick open shelves over.

Note:

Option only available with options Ensuite03, Ensuite04. Option not available with options Internal07, Internal08.

IN10 - Internal Option 10

Provide floor plan option with larger Bed 1, Ensuite upgrade and relocated Walk-in Robe which takes space from Rumpus. Ensuite upgrade includes: 1No. 1782mm vanity with double basins, 1280mm x 900mm wall-to-wall tiled shower base with grate drain, 1No. 1780mm freestanding bath, 1No. 1200mm x 1810mm aluminium sliding window in lieu of standard, Enclosed WC with 720mm hinged door and 1027mm x 610mm aluminium sliding window.

Note:

Option not available with Internal07, Internal08.

IN11 - Internal Option 11

Provide floor plan option with larger Bed 1, Ensuite upgrade, relocated Walk-in Robe and Retreat in lieu of Rumpus. Ensuite upgrade includes: 1No. 1782mm vanity with double basins, 1280mm x 900mm wall-to-wall tiled shower base with grate drain, 1No. 1780mm freestanding bath, 1No. 1200mm x 1810mm aluminium sliding window in lieu of standard, Enclosed WC with 720mm hinged door and 1027mm x 610mm aluminium sliding window. Provide additional built-in Robe to Bed 1 with 450mm shelf and hanging rail with sliding doors. Delete sliding window to side of Rumpus.

Note:

Option not available with Internal07, Internal08.

IN13 - Internal Option 13

Provide floor plan option with Retreat and Home Office in lieu of Rumpus, including: built-in Store with 450mm shelving and sliding doors, built-in Robe with 450mm shelf and hanging rail with sliding doors, 2No. additional 820mm hinged doors.

Note:

Option not available with Internal07, Internal08.

IN14 - Internal Option 14

Provide floor plan option with Prayer room that takes space from Rumpus, including: built-in Store with 450mm shelving and 620mm hinged door, 820mm hinged door to Prayer room.

Note: Option not available with Internal07, Internal08.

IN15 - Internal Option 15

Provide floor plan option with Prayer room in lieu of Walk-in Robe to Bed 2, including: built-in Robe to Bed 2 with 450mm shelf with hanging rail and sliding doors, relocated built-in Linen with 300mm shelving and 820mm hinged door, 820mm hinged door to Prayer room.

Note:

Option not available with Internal07, Internal08.

EN01 - Ensuite Option 01

Provide Ensuite upgrade option, including:

1No. 1782mm vanity with double basins, 1200mm x 900mm tiled shower base with grate drain.

EN02 - Ensuite Option 02

Provide Ensuite upgrade option with re-arranged layout, including:

1No. 2082mm vanity with 2110mm wall-to-wall benchtop and double basins, 1680mm x 900mm wall-to-wall tiled shower base with grate drain, 1No. 1027mm x 1210mm aluminium sliding window in lieu of standard, Relocated toilet pan.

EN03 - Ensuite Option 03

Provide Ensuite upgrade option with re-arranged layout, including:

1No. 1582mm vanity with 1590mm benchtop butting into one wall and double basins, 1520mm x 1000mm wall-to-wall tiled shower base with grate drain, 1No. 1027mm x 850mm aluminium sliding window in lieu of standard, Enclosed WC with 720mm hinged door and 1027mm x 610mm aluminium sliding window. Provide 720mm hinged door to relocated Walk-in Robe. Relocate 920mm hinged door to Bed 1 as shown. Option provides a Home Office in lieu of Activity with 1800mm x 850mm aluminium sliding window and bulkhead as shown.

Note:

Option not available with Internal07, Internal08.

EN04 - Ensuite Option 04

Provide Ensuite upgrade option with re-arranged layout, including:

1No. 1782mm vanity with 1960mm wall-to-wall benchtop and double basins, 1280mm x 900mm wall-to-wall tiled shower base with grate drain, 1No. 1780mm freestanding bath, 1No. 1200mm x 1810mm aluminium sliding window in lieu of standard, Enclosed WC with 720mm hinged door and 1027mm x 610mm aluminium sliding window. Option provides a Home Office in lieu of Activity with 1800mm x 850mm aluminium sliding window and bulkhead as shown.

Note:

Option not available with Internal07, Internal08.

EX01 - External Option 01

Provide 2107mm - 2710mm x 2410mm aluminium corner stacker sliding door in lieu of 2No. standard sliding doors.

2No. 89mm x 89mm steel posts with steel beam to engineer's design.

Note:

Option not available with Kitchen04, Kitchen05.

EX02 - External Option 02

Provide Grand Alfresco option, including, 2No. additional 470mm x 470mm brick piers, structural concrete slab and extended tile roof over. Option increases length of home by 3000mm. Option increases floor area of home by 11m²

EX03 GF - External Option 03 Ground Floor

Provide Grand Alfresco option, including, 3No. additional 470mm x 470mm brick piers, structural concrete slab and extended tile roof over. Remove standard sliding and awning windows from Family and provide 2110mm x 3575mm bi-parting aluminium sliding door. First floor windows to Bed 3 and Bed 4 change from 1200mm high to 1027mm high to accommodate. Option increases length of home by 3000mm. Option increases floor area of home by 25.89m²

EX03 FF - External Option 03 First Floor

Provide Grand Alfresco option, including, 3No. additional 470mm x 470mm brick piers, structural concrete slab and extended tile roof over. Remove standard sliding and awning windows from Family and provide 2110mm x 3575mm bi-parting aluminium sliding door. First floor windows to Bed 3 and Bed 4 change from 1200mm high to 1027mm high to accommodate. Option increases length of home by 3000mm. Option increases floor area of home by 25.89m²

EX04 - External Option 04

Provide mirrored Family / Alfresco, including: 2110mm x 2690mm aluminium sliding door in lieu of standard, Provide plaster-lined Void beside Kitchen benchtop. Delete 2057mm x 2410mm aluminium sliding window and 2057mm x 1210mm aluminium fixed window. Provide 2057mm x 1810mm aluminium sliding window and 2No. 2057mm x 850mm aluminium fixed windows with LOSP cover plates.

Note:

Option not available with Kitchen04, Kitchen05, Internal05.

EX05 GF - External Option 05 Ground Floor

Provide double-height Void over Meals area with mirrored Family / Alfresco, including: 2110mm x 3230mm aluminium sliding door in lieu of standard, Provide plaster-lined Void beside Kitchen benchtop. Delete 2057mm x 2410mm aluminium sliding window and 2057mm x 1210mm aluminium fixed window. Provide 2057mm x 1450mm aluminium sliding window and 2No. 2057mm x 850mm aluminium fixed windows with LOSP cover plates. Double-height Void over Meals area includes: Delete Bed 2 above. Provide an extension to the dwarf wall balustrade as shown. Delete Walk-in Robes to Beds 2, 3 and 4 and provide 2No. built-in Robes with sliding doors. Relocate heating stack and Linen closet with 1No. 820mm hinged door in lieu of standard. Provide 1200mm x 2410mm aluminium fixed window to new Void in lieu of standard.

Note:

Option not available with Kitchen04, Kitchen05, Internal05.

EX05 FF - External Option 05 First Floor

Provide double-height Void over Meals area with mirrored Family / Alfresco, including: 2110mm x 3230mm aluminium sliding door in lieu of standard, Provide plaster-lined Void beside Kitchen benchtop. Delete 2057mm x 2410mm aluminium sliding window and 2057mm x 1210mm aluminium fixed window. Provide 2057mm x 1450mm aluminium sliding window and 2No. 2057mm x 850mm aluminium fixed windows with LOSP cover plates.

Double-height Void over Meals area includes:

Delete Bed 2 above. Provide an extension to the dwarf wall balustrade as shown.

Delete Walk-in Robes to Beds 2, 3 and 4 and provide 2No. built-in Robes with sliding doors.

Relocate heating stack and Linen closet with 1No. 820mm hinged door in lieu of standard.

Provide 1200mm x 2410mm aluminium fixed window to new Void in lieu of standard.

Note:

Option not available with Kitchen04, Kitchen05, Internal05.

G01 - Garage Option 01

Provide extension to Garage to create additional Storage area including additional 2057mm x 850mm aluminium awning feature window. Increases width of the home by 1680mm. Increases area of the home by 9.1m².

G02 - Garage Option 02

Provide extension to Garage to create Triple Car Garage including additional 2140mm x 2410mm garage door as per colour selection. Increases width of the home by 3600mm. Increases area of the home by 23.84m².