



**FLOORPLAN OPTIONS**

We personalise our floorplans. Talk to us about our huge range of ready-to-go design options or simply visit [www.burbank.com.au/south-australia](http://www.burbank.com.au/south-australia) for more details.

Listed details based on Sheffield facade floorplan (illustrated)

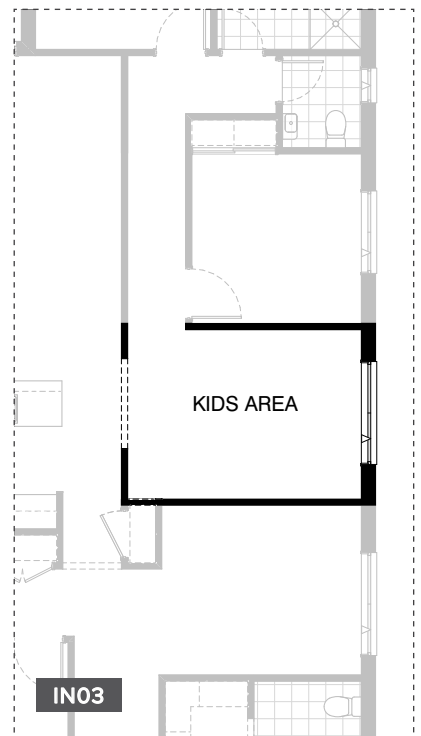
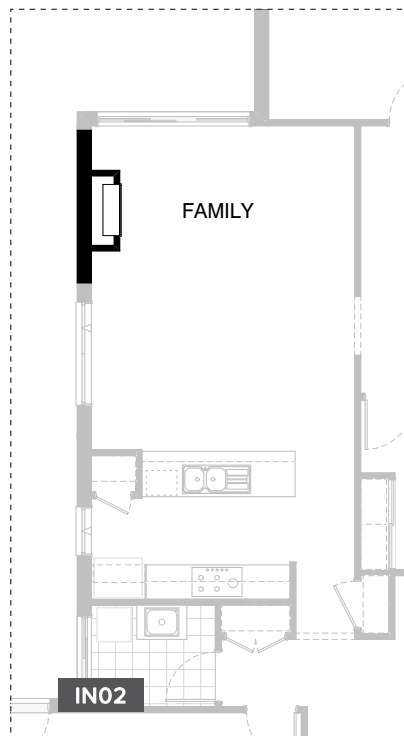
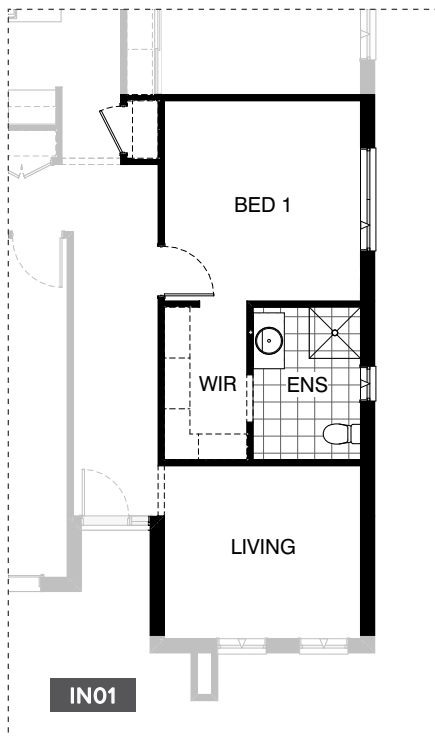
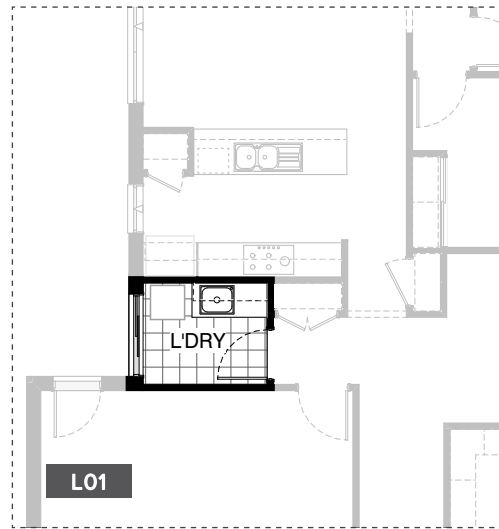
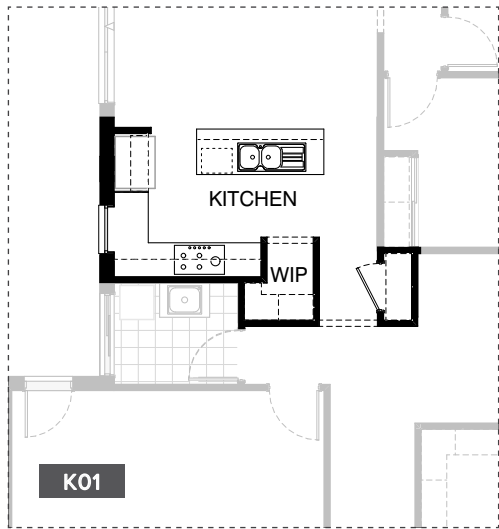
**Facades available:**

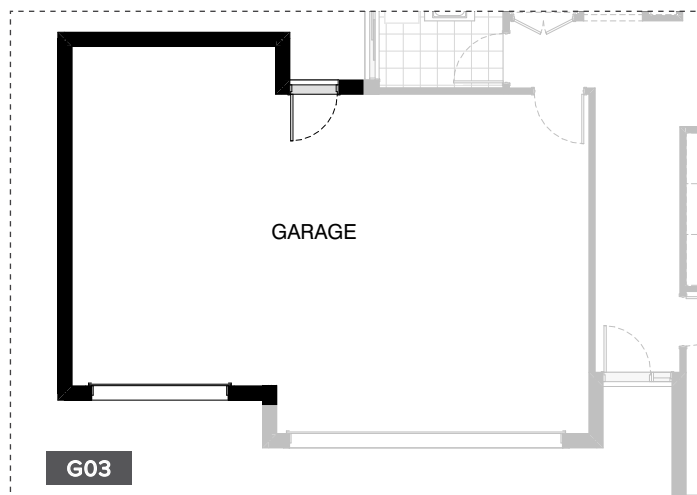
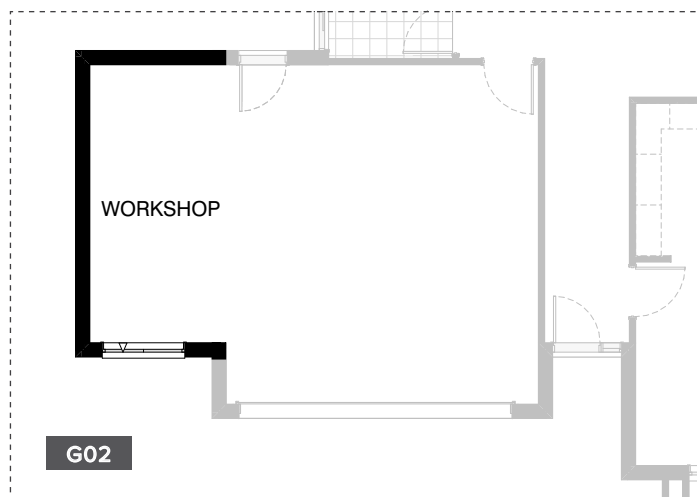
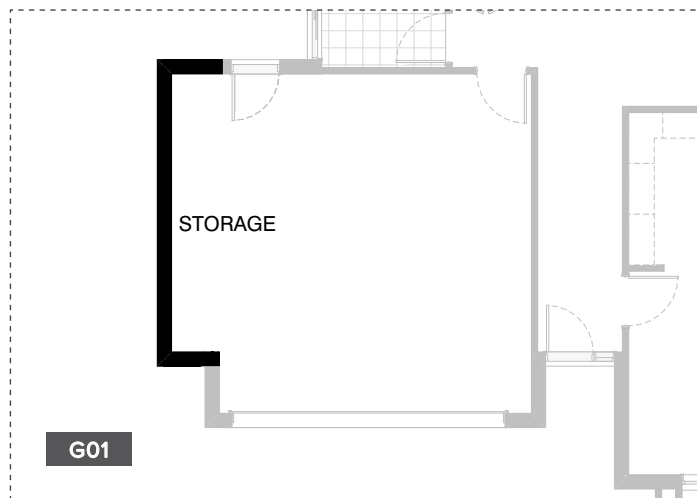
Sheffield, Aster, Eastwood,	
Hartford, Lancaster, Leawood,	
Newbury, Wiltshire	
<b>Overall home width</b>	<b>11.15m</b>
<b>Overall home length</b>	<b>21.83m</b>

Residence	154.5m <sup>2</sup>	16.6sq
Garage	36.5m <sup>2</sup>	3.9sq
Porch	5.8m <sup>2</sup>	0.6sq
Alfresco	9.7m <sup>2</sup>	1.0sq
<b>Total</b>	<b>206.5m<sup>2</sup></b>	<b>22.2sq</b>

\*Copyright conditions. All photos and illustrations are representative only. Floor plans and specifications may be varied by Burbank without notice, the dimensions are diagrammatic only and a Building Contract with final drawings will display correct dimensions and detail. All designs are the property of Burbank and must not be used, reproduced, copied or varied, wholly or in part without written permission from an authorised Burbank representative. Copyright Burbank Australia (SA) Pty Ltd. ABN 96 165 533 406. BLD 266709.

**Call 13 BURBANK**  
**Visit [burbank.com.au](http://burbank.com.au)**





**OPTION DESCRIPTIONS****K01 - Kitchen Option 01**

Provide Kitchen and WIP option by deleting Linen cupboard, 2No. 520mm flush panel hinged doors & 4No. shelves.  
Reduce L'dry passage by 160mm and provide site built plaster lined WIP with 4No. 450mm deep shelves,  
Provide 1No. 400mm base cupboard,  
1No. 600mm base cupboard,  
1No. 900mm base cupboard,  
1No. laminated DW provision,  
1No. 450mm drawers unit,  
1No. Microwave provision with pot drawer,  
1No. 900mm blind carcass with 1No. 450mm door,  
1No. 900mm under bench oven with cooktop and retractable rangehood,  
1No. open shelf above refrigerator space,  
1No. 700mm overhead cupboard,  
1No. 600mm overhead cupboard,  
1No. 300mm overhead cupboard,  
1No. 1200mm x 850mm aluminium fixed window with no bottom reveal in lieu of standard, additional tiled splash back and benchtop to suit.  
Convert Broom cupboard into Linen cupboard, Increase width by 160mm in line with WIP wall, add 4No. shelves and centre 820mm hinged door.

**L01 - Laundry Option 01**

Provide Laundry upgrade with laminated inset trough,  
1No. 800mm base cupboard  
1No. 450mm base cupboard,  
1No. 800mm overhead cupboard,  
1No. 450mm overhead cupboard,  
additional tiled splash back and benchtop to suit.

**IN01 - Internal Option 01**

Relocate Living with Bed 1, Ensuite and WIR, reduce Bed 1 by 60mm to accommodate.

**IN02 - Internal Option 02**

Provide Real Flame Inspire gas fireplace to family room 400mm off floor level in a 1400mm x 500mm boxed out plaster wall with a 4 sided black fascia to Family room side wall with capped gas point. Delete 1No. 514mm x 1810mm aluminium awning window from Family, relocate Meals window by 360mm to suit.

**IN03 - Internal Option 03**

Provide Kids Area in lieu of Bed 4 and relocate passage entry with 1600mm wide bulkhead.

**G01 - Garage Option 01**

Provide extension to Garage with pitched roof to create additional Storage area.  
Increases width by 840mm.  
Increases area by 4.53m<sup>2</sup>.

**G02 - Garage Option 02**

Provide extension to Garage with pitched roof to create Workshop area including additional 1800mm x 1450mm aluminium awning feature window to suit.  
Increases length by 2400mm.  
Increases area by 12.94m<sup>2</sup>.

**G03 - Garage Option 03**

Provide triple car Garage with pitched roof and additional 2140mm x 2410 Garage door as per colour selection.  
Increases width by 3600mm.  
Increases area by 23.70m<sup>2</sup>.