

FLOORPLAN OPTIONS

We personalise our floorplans. Talk to us about our huge range of ready-to-go design options or simply visit www.burbank.com.au/south-australia for more details.

Listed details based on Coventry facade floorplan (illustrated)

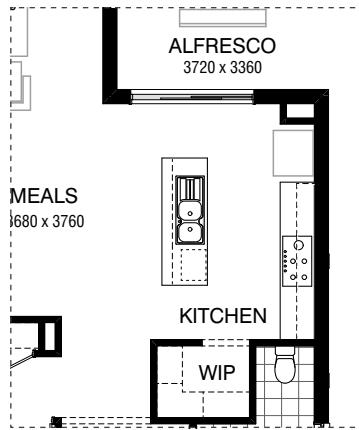
Facades available:

Coventry, Avondale, Halifax,	
Westerley, Weston, Windermere	
Overall home width	10.55m
Overall home length	16.91m

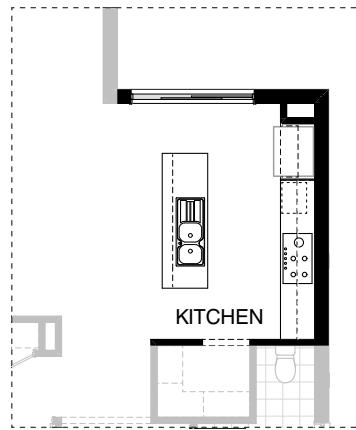
Residence	233.6m ²	25.2sq
Garage	36.6m ²	3.9sq
Porch	4.0m ²	0.4sq
Alfresco	12.5m ²	1.3sq
Total	286.7m²	30.9sq

*Copyright conditions. All photos and illustrations are representative only. Floor plans and specifications may be varied by Burbank without notice, the dimensions are diagrammatic only and a Building Contract with final drawings will display correct dimensions and detail. All designs are the property of Burbank and must not be used, reproduced, copied or varied, wholly or in part without written permission from an authorised Burbank representative. Copyright Burbank Australia (SA) Pty Ltd. ABN 96 165 533 406. BLD 266709.

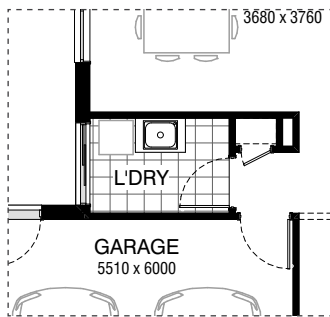
Call 13 BURBANK
Visit burbank.com.au



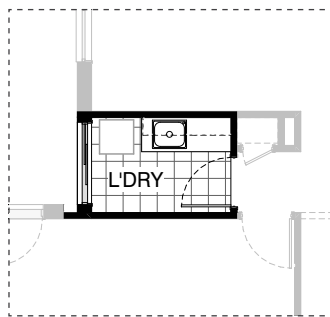
Master Kitchen Design



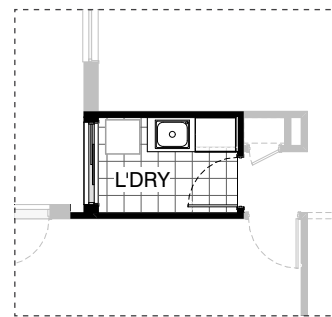
K01



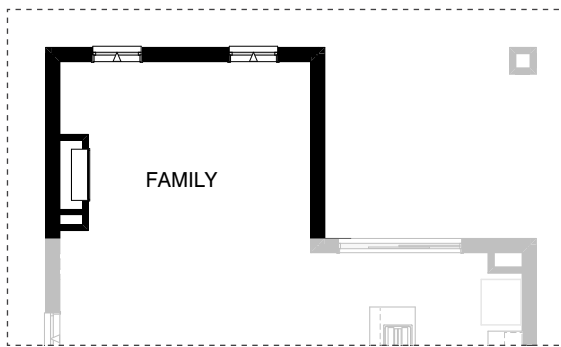
Master Laundry Design



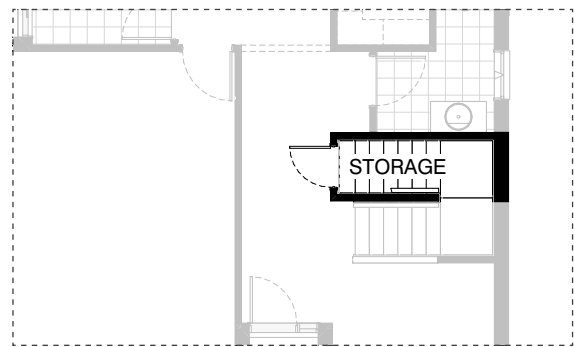
LD01



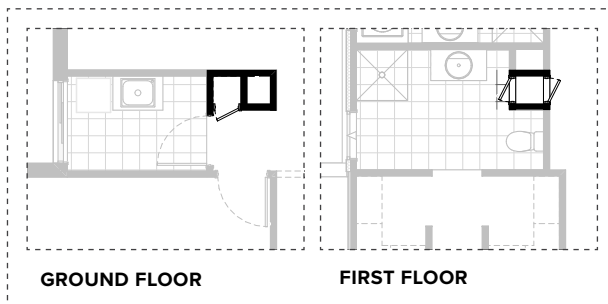
LD02



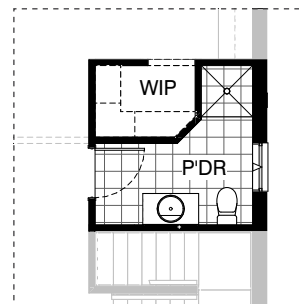
IN01



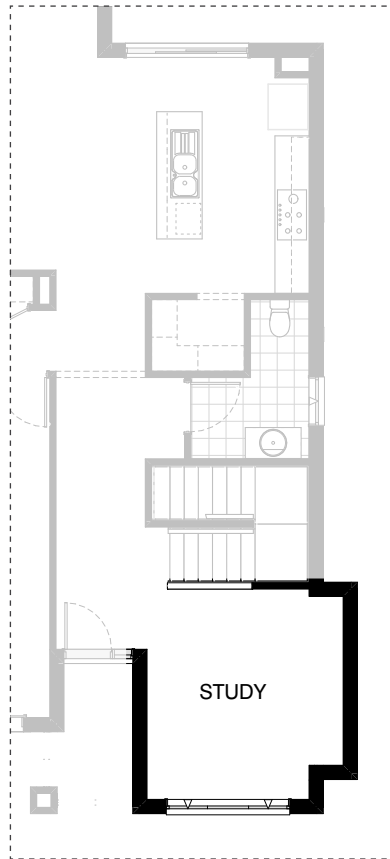
IN02



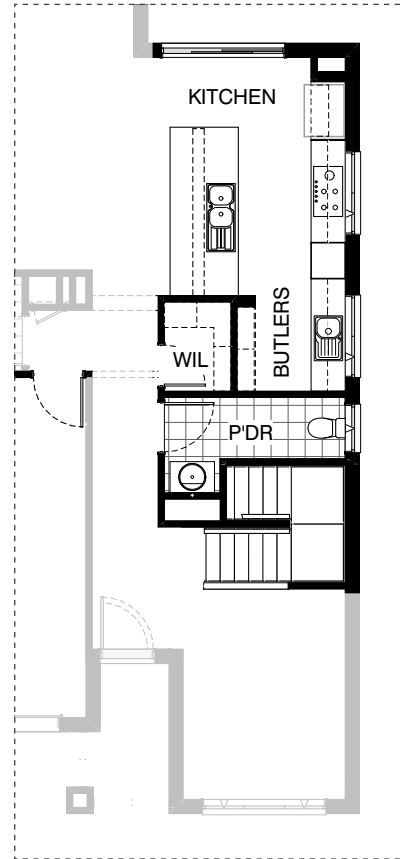
IN03



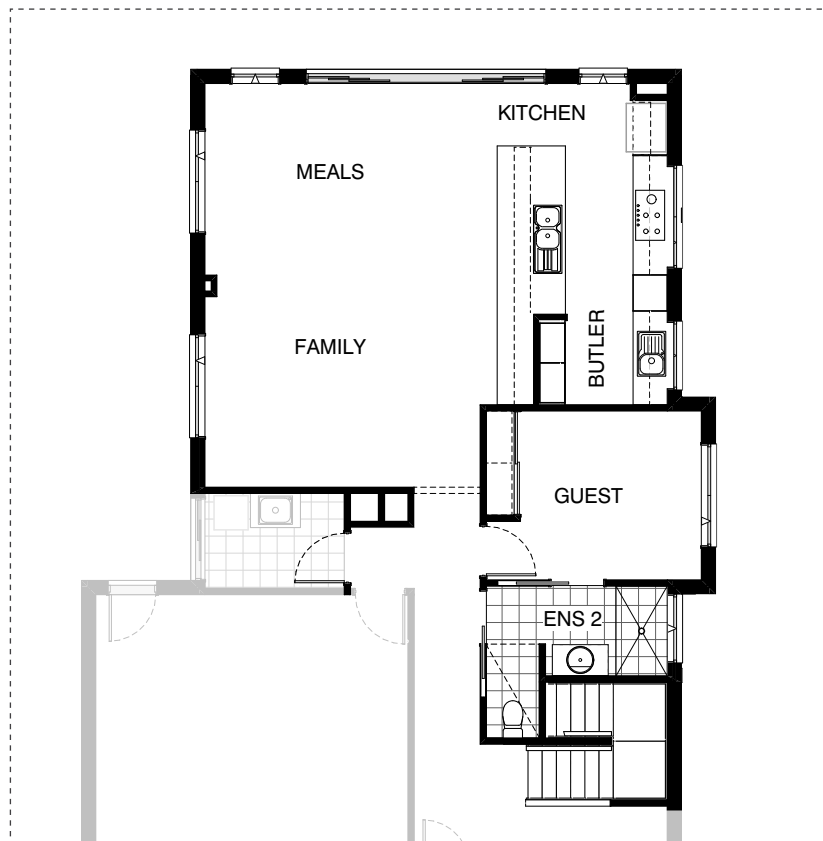
IN04



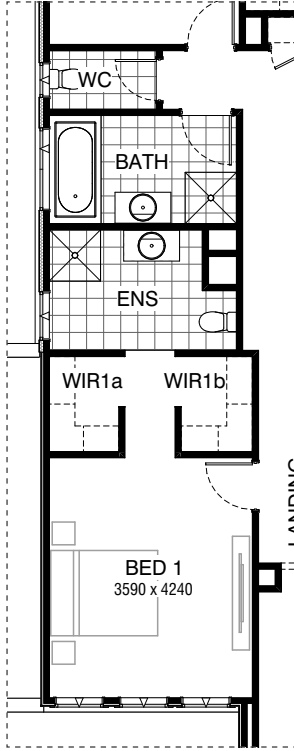
IN05



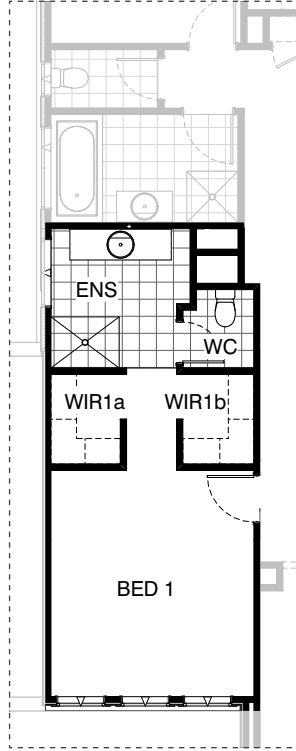
IN06



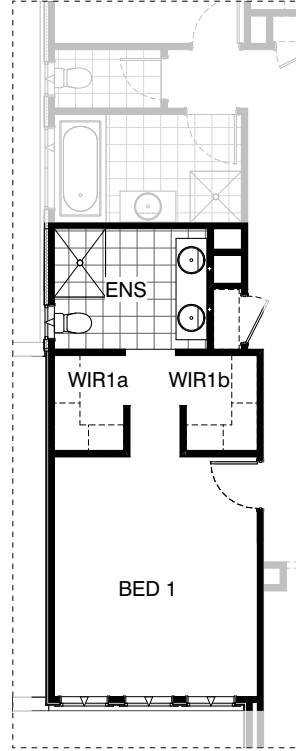
IN07



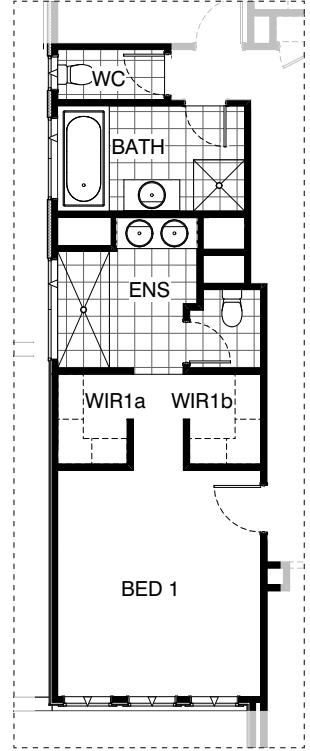
Master Ensuite Design



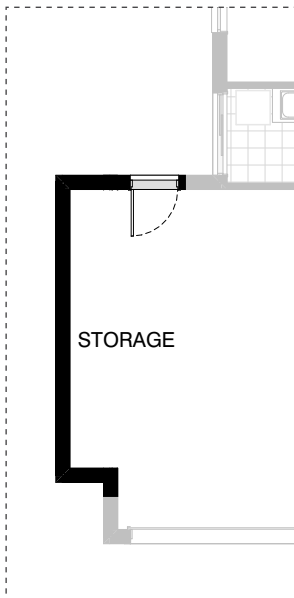
EN01



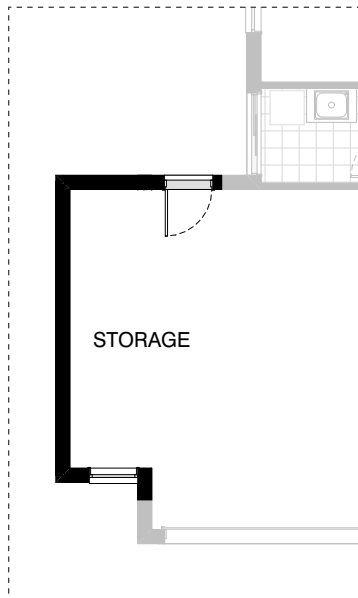
EN02



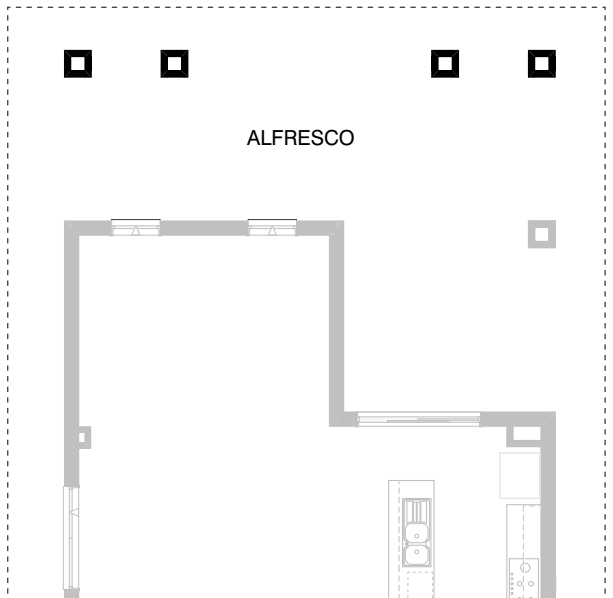
EN03



G01



G02



EX01

*Copyright conditions. All photos and illustrations are representative only. Floor plans and specifications may be varied by Burbank without notice, the dimensions are diagrammatic only and a Building Contract with final drawings will display correct dimensions and detail. All designs are the property of Burbank and must not be used, reproduced, copied or varied, wholly or in part without written permission from an authorised Burbank representative. Copyright Burbank Australia (SA) Pty Ltd. ABN 96 165 533 406. BLD 266709.

OPTION DESCRIPTIONS**K01 - Option Kitchen01**

Provide Kitchen Upgrade with laminated open shelf above refrigerator space, 1no. laminated MW. provision,
2no. 300mm base cabinets,
1no. 600mm pot drawers,
2no. 900mm overhead cabinets,
1no. 450mm drawers,
1no. laminated DW. provision,
1no. 900mm base cabinet and
1no. 300mm base cabinet with additional tiled splashback and bench top to suit. Provide 1no. 900mm underbench oven with 900mm gas cooktop & retractable rangehood above.

LD01 - Option Laundry01

Provide Laundry Option with additional inset trough, 1No. 600mm base cabinet
1No. 900mm base cabinet,
1No. 600mm base overhead cabinet
1No. 900mm overhead cabinet and additional tiled splashback and bench top to suit.

LD02 - Option Laundry02

Provide Laundry upgrade including:
1 No. 800mm base cabinet with inset trough,
1 No. 800mm overhead cabinet,
1 No. 700mm linen joinery unit,
Additional benchtop and tiled splashback to suit.

IN01 - Option Internal01

Provide Real Flame Inspire 900 gas fireplace 400mm off floor level in a 1400mm x 500mm boxed out plaster wall with a 4 sided black fascia to Family room side wall with capped gas point.

IN02 - Option Internal02

Provide Storage room below stair including: 720mm flush panel hinged door, plaster lined walls and raked, plaster ceiling with square set cornice.
Note: Not available with Option Internal06.

IN03 - Option Internal03

Provide Laundry chute and delete downstairs Linen with 1no. 420mm flush panel hinged door

IN04 - Option Internal04

Provide Powder upgrade with additional 900mm x 900mm recessed tiled shower base, relocate hinged door, toilet and vanity basin to suit and increase WIP by 80mm and angle stud wall to suit.

IN05 - Option Internal05

Provide Study Option by extending Study wall width by 600mm with brick parapet flat roof above.
Increases area by 2.08m². Increases width by 600mm.

IN06 - Option Internal06

Provide Kitchen upgrade including Powder room and W.I.P redesign and provide WIL.
720mm flush panel door to W.I.L in lieu of 520mm to Linen additional 4No. 300mm and 4No. 450mm shelving to suit, provide Alcove beneath stair for new vanity location with 782mm vanity unit in lieu standard
1029mm x 850mm aluminium sliding window in lieu of standard to Powder room. 1No. 300mm deep bulkhead to Butlers
2No. additional 514mm x 1450mm aluminium fixed windows to splashback.
3No. 450mm base cabinets,
1No. 600mm base cabinet,
4No. 900mm base cabinets,
1No. 450mm drawer unit,
1No. DW. provision,
1No. open shelf above fridge space with 16mm laminated end panel,
1No. wall oven tower with pot drawers below and M.W. provision and cabinets above 1No. 600mm wall oven,
900mm gas cooktop with retractable rangehood above,
1200mm deep benchtop to island bench,
3No. 450mm overhead cabinet,
1No. 600mm overhead cabinet
1No. 900mm overhead cabinets
Provide additional single bowl sink to Butlers Pantry including additional tiled splashback and bench top to suit,
add 240mm wide bulkhead to passage
Note: Not available with Options Internal02, & Internal03

IN07 - Option Internal07

Provide Guest Bedroom and Kitchen upgrade option including:
Remove Alfresco to the rear of the home
Provide Ensuite in lieu of Powder including 1580mm tiled shower base, 400mm deep bulkhead over WC,
Additional 350mm x 1210mm aluminium sliding window in lieu of standard
Provide Guest bedroom with 600mm x 3470mm Ground floor extension increases area by 2.08m²,
Inbuilt robe with hanging rail and 450mm shelf including sliding doors and additional bedroom door,
Additional 1800mm x 1810mm aluminium sliding window to Guest Bedroom,
Kitchen upgrade with
3No. 900mm base cabinets,
2No. 600mm base cabinets,
2No. 600mm overhead cabinets,
2No. 400mm base cabinets,
1No. 800mm base cabinet,
2No. 800mm overhead cabinets,
1No. 600mm wall oven tower with open shelf
1No. 600mm wall oven,
Relocate dishwasher space and cutlery drawer,
900mm gas cooktop with retractable rangehood above,
Additional single bowl sink to Butlers,
2No. 700mm laminated pantry units
Extend Kitchen benchtop behind Butlers to create desk space with 300mm overhang Swap Family and Meals locations and provide
2095mm x 4217mm aluminium sliding door,
2No. 2057mm x 850mm aluminium fixed windows
Note: Not available with Options Internal02, & Internal03

EN01 - Option Ensuite01

Provide Ensuite upgrade with additional site built plaster lined walls to WC with
1no. 720mm flush panel hinged door,
1200mm x 900mm tiled shower base,
1782mm wide vanity unit in lieu of standard and
1200mm x 1210mm aluminium sliding window in lieu of standard. Decrease Bed 1 by 240mm to 4000mm x 3830mm, decrease W.I.R 1a/b by 90mm and increase Ensuite / WC by 330mm to suit.

OPTION DESCRIPTIONS**EN02 - Option Ensuite02**

Provide Ensuite option with
1no. 1200mm x 900mm tiled shower base in lieu of standard,
1no. 1782mm wide vanity with
2no. basins in lieu of standard
1no. 1029mm x 610mm aluminium sliding window in lieu of standard. Provide additional 1no. Linen cupboard with
1no. 820mm flush panel hinged door to suit,
relocate Ensuite opening and adjust
W.I.R 1a/b to suit.

EN03 - Option Ensuite03

Provide Ensuite upgrade with additional
site built plaster lined walls to WC
1No. 720mm flush panel hinged door,
2050mm x 910mm tiled shower base,
1No. 1282mm vanity with double basins including
1 row tiling beneath mirror to suit wall-to-wall benchtop
including returns in lieu of standard
1No. 350mm x 1810mm aluminium sliding window in lieu of standard.
Decrease Bed 1 by 240mm to 4000mm x 3830mm,
Bathroom by 150mm to 1870mm x 3310mm,
WC by 50mm to 900mm x 1900mm,
decrease W.I.R 1a/b by 90mm and
increase Ensuite / WC / HS by 200mm to suit.

G01 - Option Garage01

Provide extension to Garage to create additional Storage area. Increases area by 4.54m². Increases width by 840mm.

G02 - Option Garage02

Provide extension to Garage to create Storage area including 2057mm x 850mm aluminium awning feature window. Increases area by 7.78m². Increases width by 1440mm.

EX01 - Option External01

Provide Grand Alfresco option including: Structural concrete slab with tiled roof over, 4No. 470mm x 470mm brick piers
Extends ground floor by 3.0m and increases area by 25.89m²