

FLOORPLAN OPTIONS

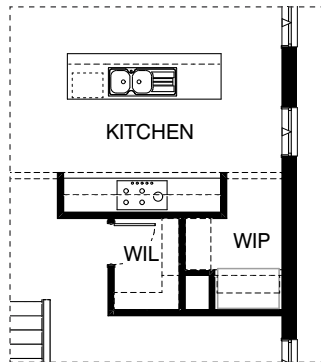
We personalise our floorplans. Talk to us about our huge range of ready-to-go design options or simply visit www.burbank.com.au/south-australia for more details.

Listed details based on Coventry facade floorplan (illustrated)

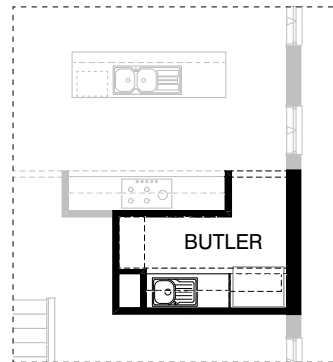
Facades available:

Coventry, Avondale, Halifax,	Residence	217.0m ²	23.4sq
Northampton, Seacliff, Westerley,	Garage	37.2m ²	4.0sq
Weston, Windermere	Porch	3.1m ²	0.3sq
Overall home width	11.27m	Alfresco	10.1m ²
Overall home length	17.87m	Total	267.4m²
			28.8sq

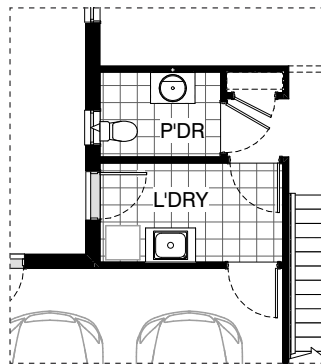
*Copyright conditions. All photos and illustrations are representative only. Floor plans and specifications may be varied by Burbank without notice, the dimensions are diagrammatic only and a Building Contract with final drawings will display correct dimensions and detail. All designs are the property of Burbank and must not be used, reproduced, copied or varied, wholly or in part without written permission from an authorised Burbank representative. Copyright Burbank Australia (SA) Pty Ltd. ABN 96 165 533 406. BLD 266709.



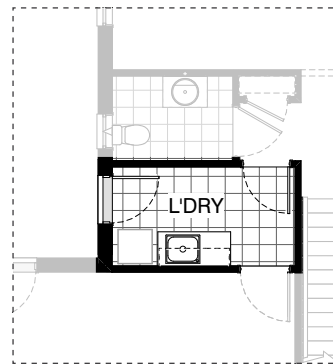
Master Kitchen Design



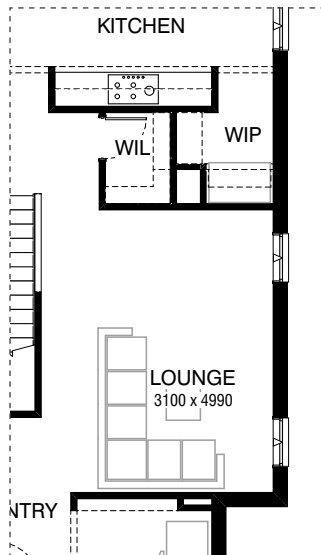
K01



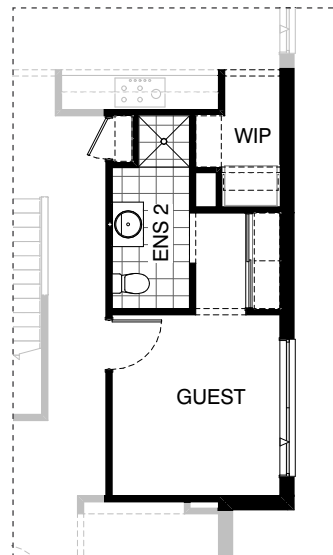
Master Laundry Design



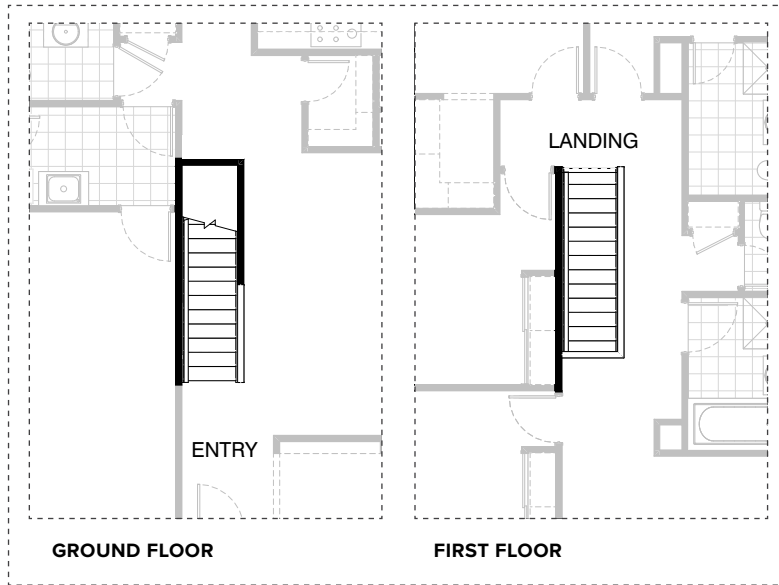
LD01



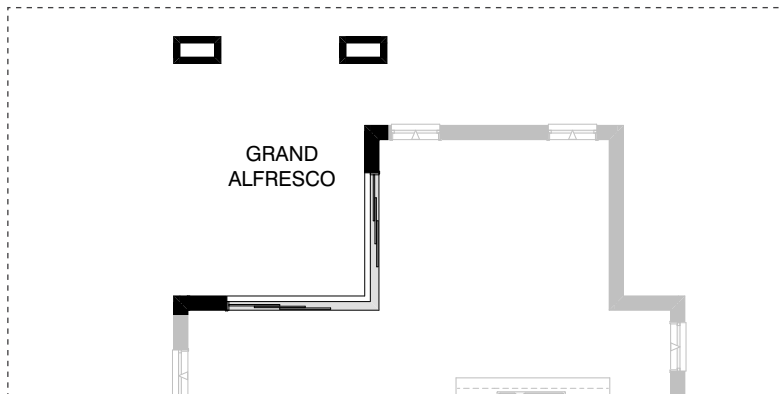
Master Lounge Design



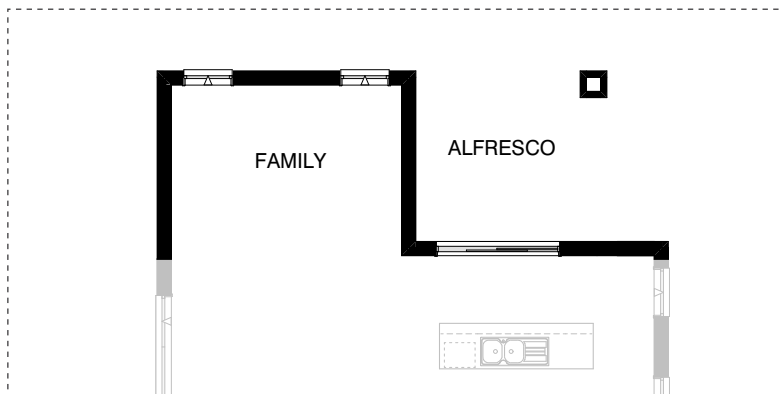
IN01



IN02



EX01



EX02

OPTION DESCRIPTIONS**Option Kitchen01**

Provide Butlers upgrade by extending WIP and deleting WIL. Provide 2No. 700mm base cupboards,
2No. 700mm overhead cupboards &
1No. 900mm overhead cupboard above ref. space.

Option Laundry01

Provide Laundry upgrade including: laminated inset trough,
1No. 800mm base cupboard,
1No. 400mm base cupboard,
1No. 800mm overhead cupboard, 1No. 400mm overhead cupboard with additional tiled splash back and benchtop to suit.

Option Internal01

Provide Guest bedroom, Ensuite and Robe option in lieu of standard Lounge and WIL. Provide additional 1No. 870mm flush panel hinged door,
1No. 900mm x 900mm tiled in shower base,
1No. 782mm wide vanity, toilet pan,
1 No. 450mm shelf with hanging rail to Robe and
1No. 514mm x 2410mm aluminium awning window to Guest in lieu of standard.

Option Internal02

Provide option to mirror staircase and enter the staircase from opposite direction at Entry.

Option External01

Provide Grand Alfresco option including:
1No. 2107mm x 2416mm x 2674mm aluminium corner sliding door to Family / Meals, 2No. 470mm x 830mm brick piers.
Increases length by 1560mm
Increases area by 5.85m²

Option External02

Provide mirrored Family and Alfresco.