



FLOORPLAN OPTIONS

We personalise our floorplans. Talk to us about our huge range of ready-to-go design options or simply visit www.burbank.com.au/south-australia for more details.

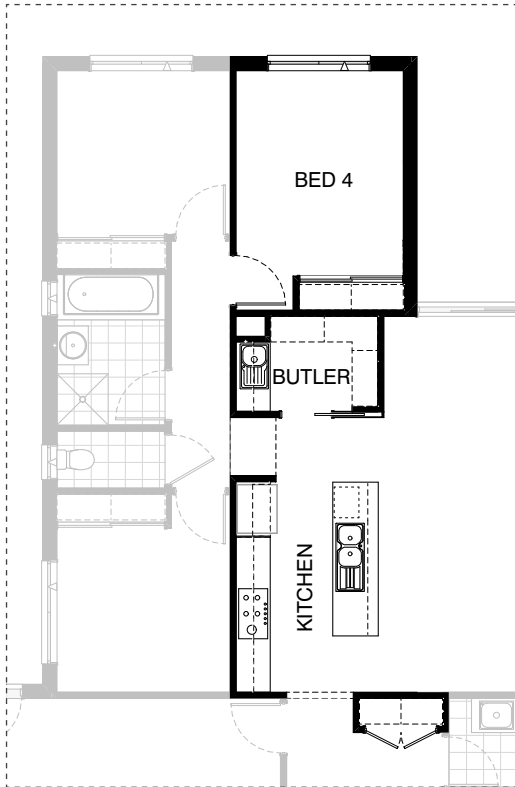
Listed details based on Sheffield facade floorplan (illustrated)

Facades available:

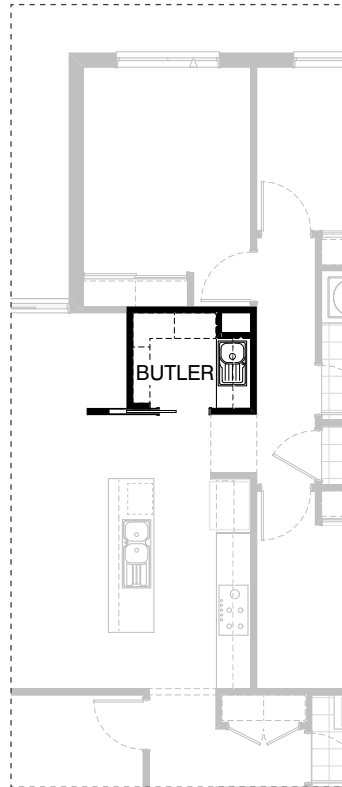
Sheffield, Aster, Eastwood,
Hartford, Lancaster, Leawood,
Newbury, Wiltshire
Overall home width 11.03m
Overall home length 19.91m

Residence	132.8m ²	14.3sq
Garage	36.3m ²	3.9sq
Alfresco	7.6m ²	0.8sq
Porch	5.1m ²	0.5sq
Total	181.8m²	19.6sq

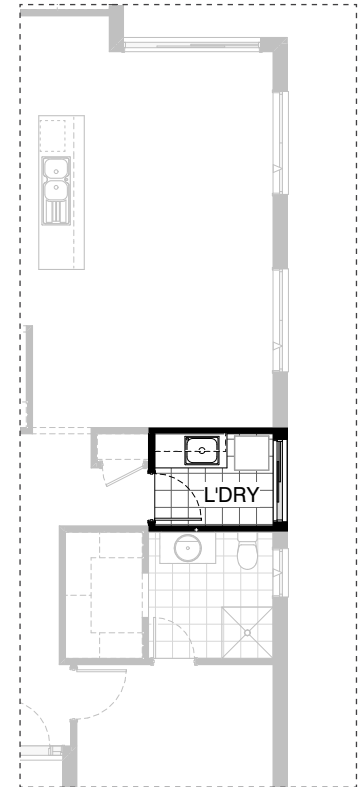
*Copyright conditions. All photos and illustrations are representative only. Floor plans and specifications may be varied by Burbank without notice, the dimensions are diagrammatic only and a Building Contract with final drawings will display correct dimensions and detail. All designs are the property of Burbank and must not be used, reproduced, copied or varied, wholly or in part without written permission from an authorised Burbank representative. Copyright Burbank Australia (SA) Pty Ltd. ABN 96 165 533 406. BLD 266709.



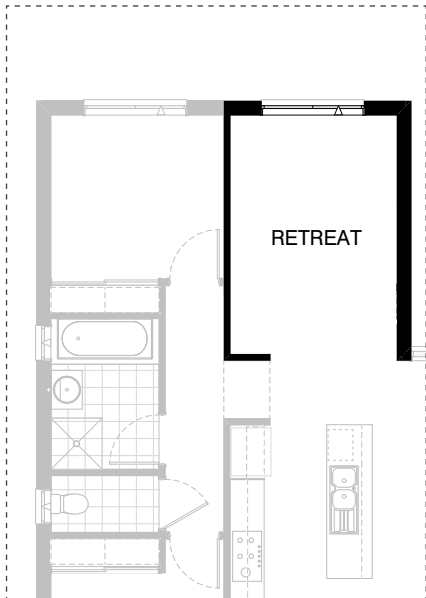
K01



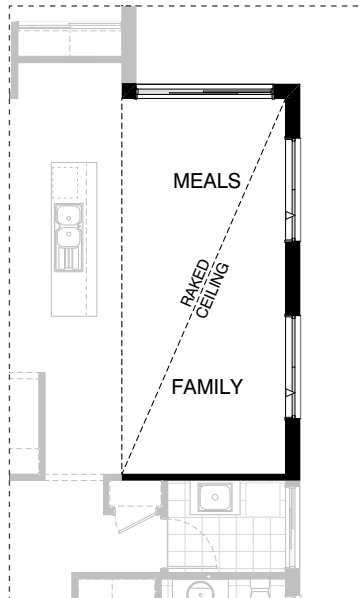
K02



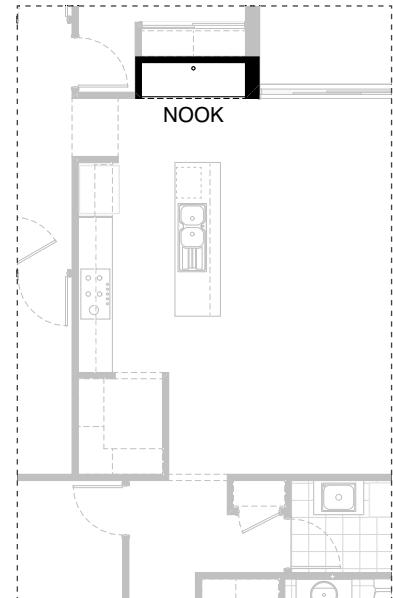
L01



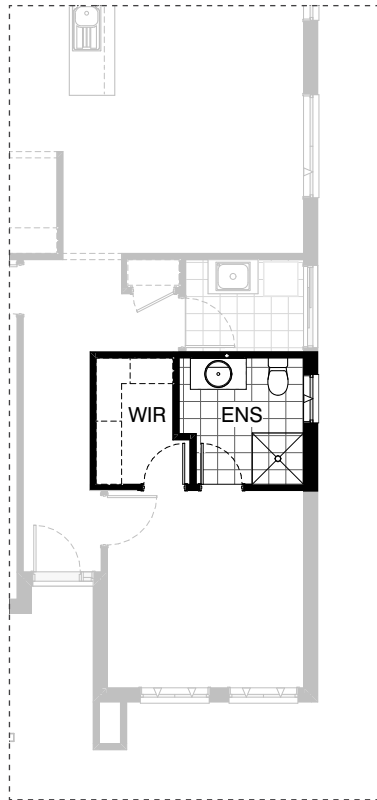
IN01



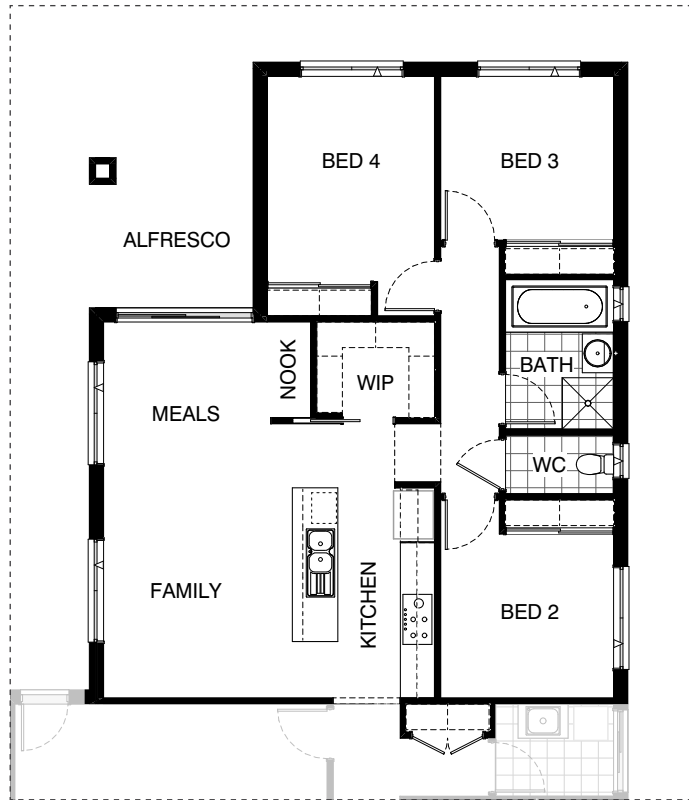
IN02



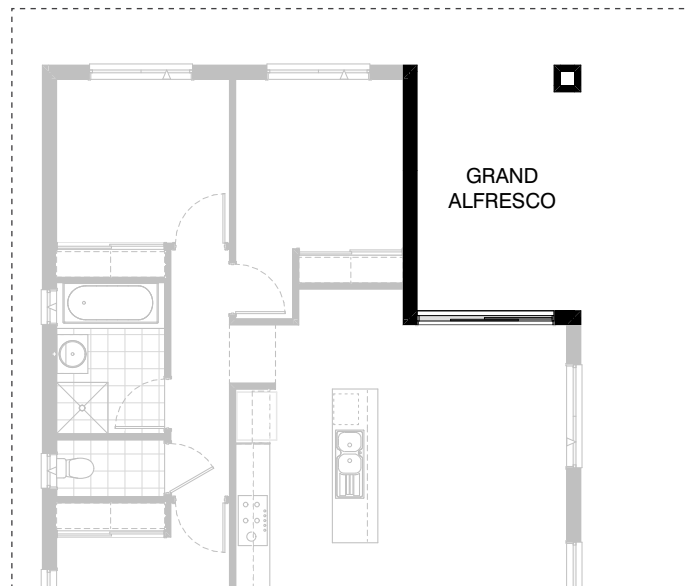
IN03



EN01



EX01



EX02

OPTION DESCRIPTIONS**K01 - Kitchen Option 01**

Provide Butler's Pantry option which moves pantry to other side of kitchen. Kitchen includes 900mm underbench oven & 900mm cooktop with 900mm retractable rangehood, double bowl sink 450mm drawer unit, dishwasher provision, microwave provision with pot drawer,
3No. 900mm base cupboards,
2No. 900mm overhead cupboards
Butler's Pantry includes;
1No. 800mm base cupboard with single bowl sink,
1No. 350mm base cupboard,
1No. 800mm overhead cupboard,
1No. 350mm overhead cupboard,
4No. 450mm shelves,
870mm cavity sliding door, additional benchtop and tiled splashback to suit.
Increase width of Bed 4 by 630mm by removing nook and increase the width of Linen cupboard next to laundry by 560mm.

K02 - Kitchen Option 02

Provide Butler's Pantry including;
1No. 800mm base cupboard with single bowl sink,
1No. 350mm base cupboard,
1No. 800mm overhead cupboard,
1No. 350mm overhead cupboard,
4No. 300mm shelves,
4No. 450mm shelves,
870mm cavity sliding door,
additional benchtop and tiled splashback to suit.
Note:
Only available with External01.

L01 - Laundry Option 01

Provide Laundry upgrade including;
1No. 400mm base cupboard,
1No. 800mm overhead cupboard,
1No. 400mm overhead cupboard,
additional benchtop and tiled splashback to suit.

IN01 - Internal Option 01

Provide retreat area in lieu of Bedroom 4 & Nook.

IN02 - Internal Option 02

Provide raked ceiling to Meals and Family with bulkhead and standard ceiling height over Kitchen / Nook / WIP.

IN03 - Internal Option 03

Provide desk option to nook including;
1No. 600mm drawer units below desk,
laminated benchtop and plasterboard bulkhead over.

EN01 - Ensuite Option 01

Provide Ensuite option with
720mm hinged door access from
Bed 1 directly to Walk-in Robe.

EX01 - External Option 01

Provide mirrored rear section of the home.
Relocate WIP & Nook to opposite side of kitchen,
flip Bath / WC and increase width of
Linen cupboard by 560mm.

EX02 - External Option 02

Provide Grand Alfresco option with
additional light point & tiled roof above.
Option adds 4.84m² to the overall house area.