

PARISH 47

5 3.5 2

Total squares 46.5sq

B
SERIES

Minimum
Lot Width
14.0m

Minimum
Lot Length
30.0m



Design Dimensions
11,990mm(W) x 23,030mm(L).

Facade Choices
Fullerton, Huntington, Moorpark,
Oakwood, Pallsades, Redlands, Riverside.
Details based on Riverside façade floorplan (illustrated)

DESIGN DIMENSIONS

Residence	377.2m ²	40.6sq
Garage	36.4m ²	3.9sq
Porch	3.3m ²	0.4sq
Alfresco	15.2m ²	1.6sq
Total	432.1m²	46.5sq

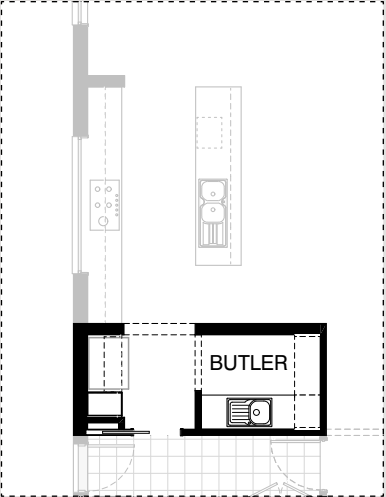
Burbank

*Copyright conditions. All photos and illustrations are representative only. Floor plans and specifications may be varied by Burbank without notice, the dimensions are diagrammatic only and a Building Contract with final drawings will display correct dimensions and detail. All designs are the property of Burbank and must not be used, reproduced, copied or varied, wholly or in part without written permission from an authorised Burbank representative. Copyright Burbank Australia Pty Ltd. ABN 91 007 099 872. Builders Registration Number CDB-U-52603.

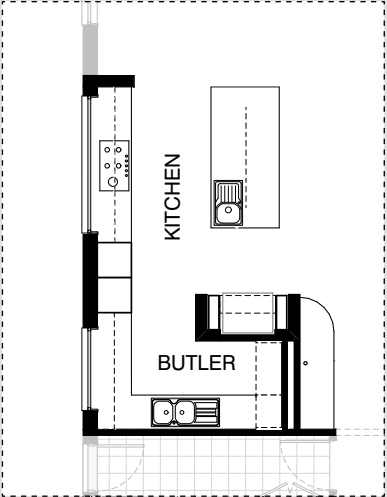


KITCHEN OPTIONS

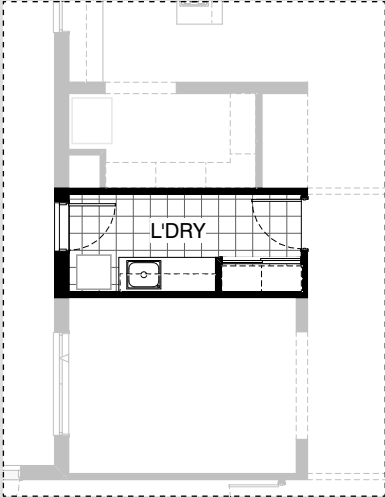
LAUNDRY OPTIONS



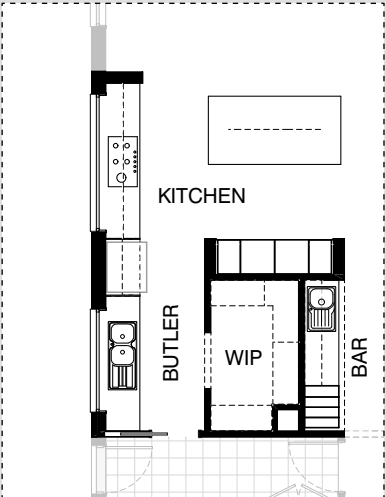
K01



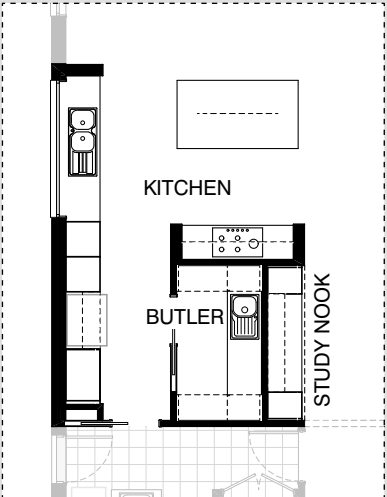
K02



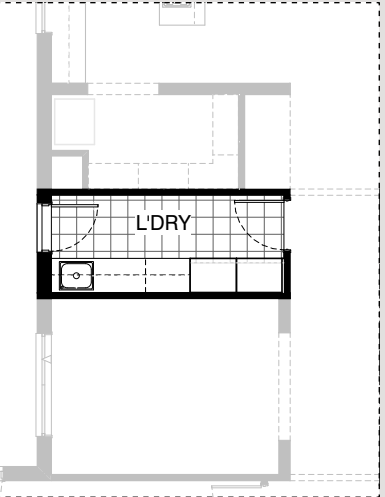
L01



K03



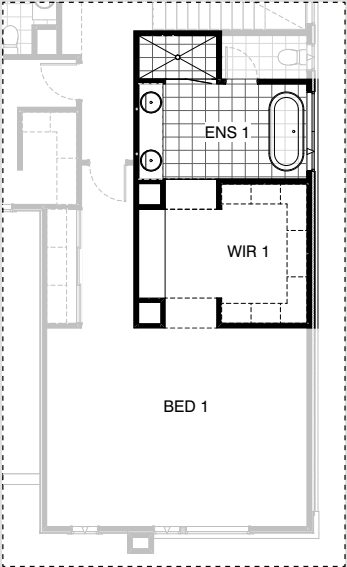
K04



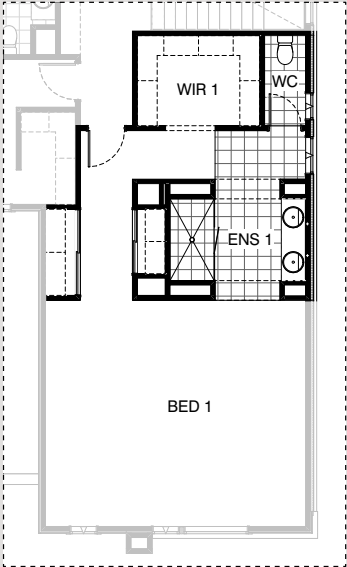
L02



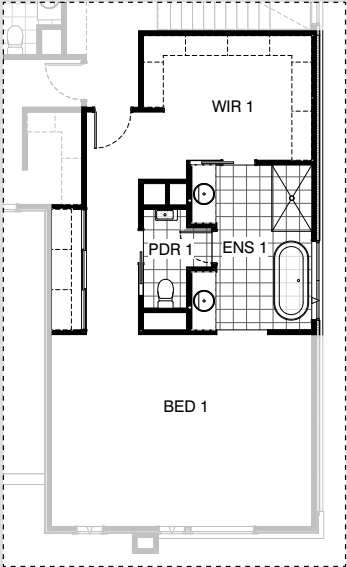
ENSUITE OPTIONS



EN01

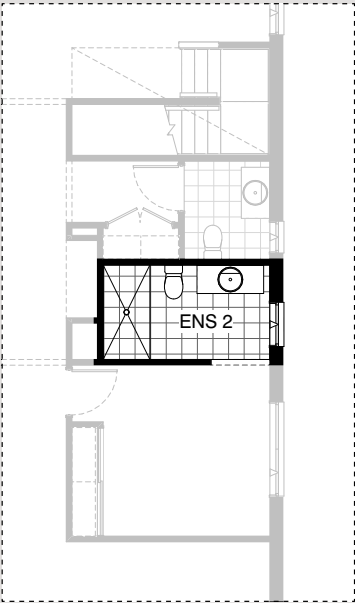


EN02

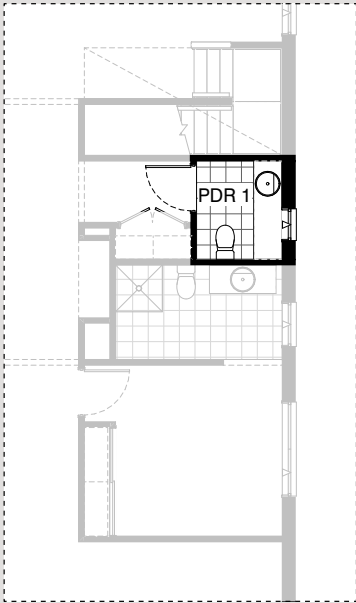


EN03

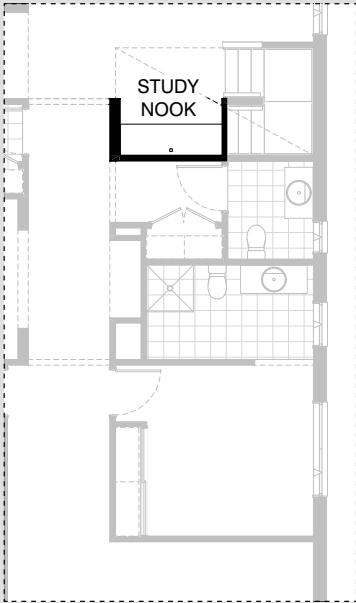
INTERNAL OPTIONS



IN01



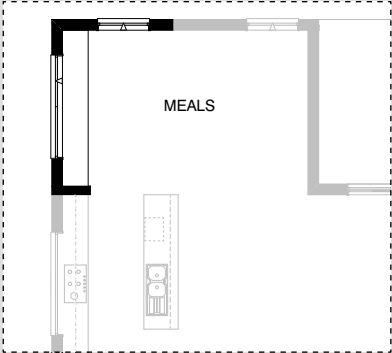
IN02



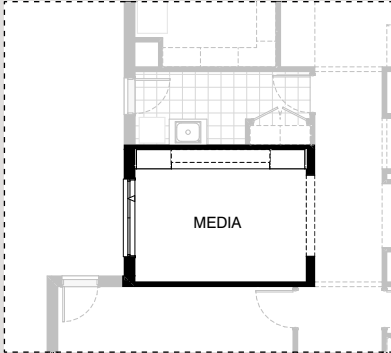
IN03



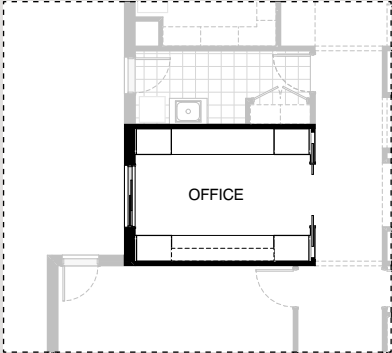
INTERNAL OPTIONS



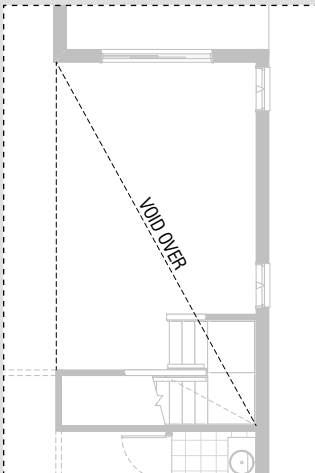
IN04



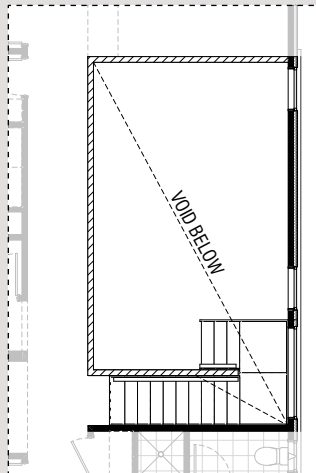
IN05



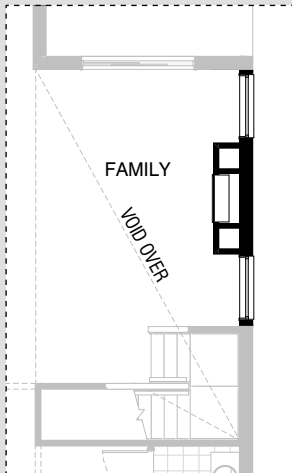
IN06



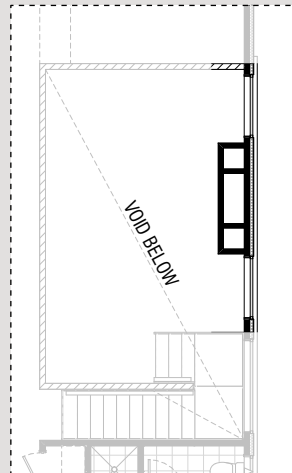
IN07 GF



IN07 FF

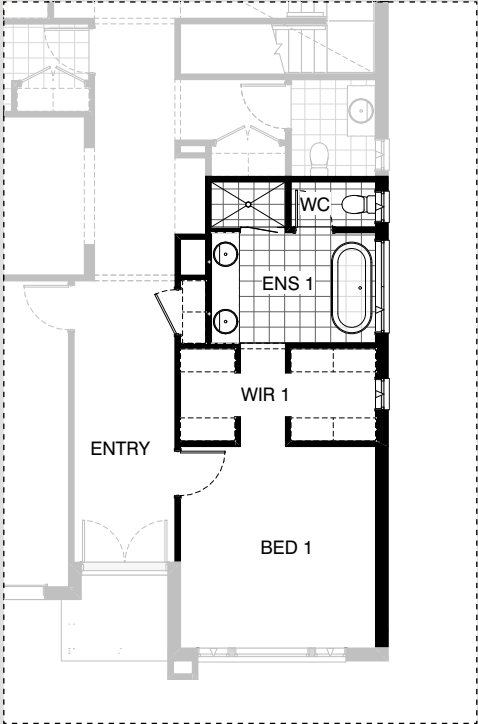


IN08 GF

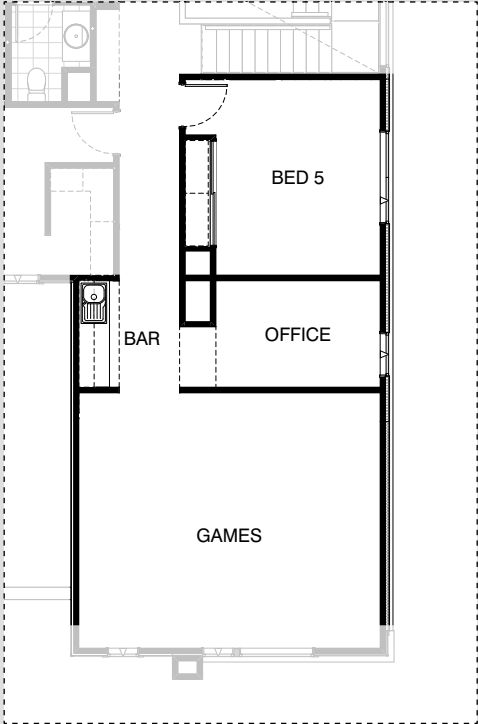


IN08 FF

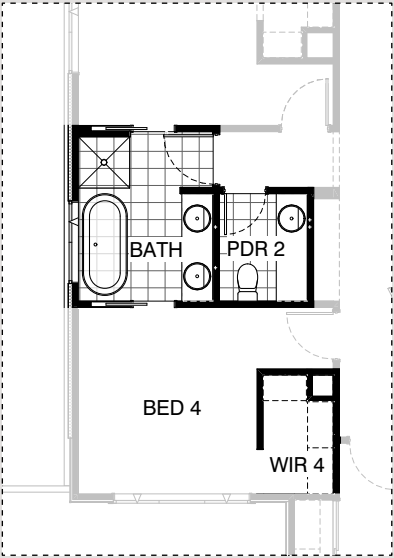
INTERNAL OPTIONS



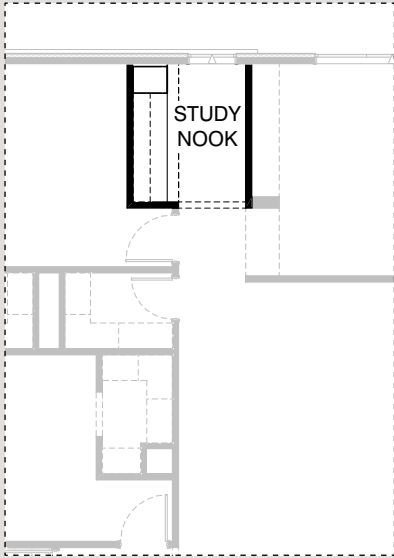
IN09 GF



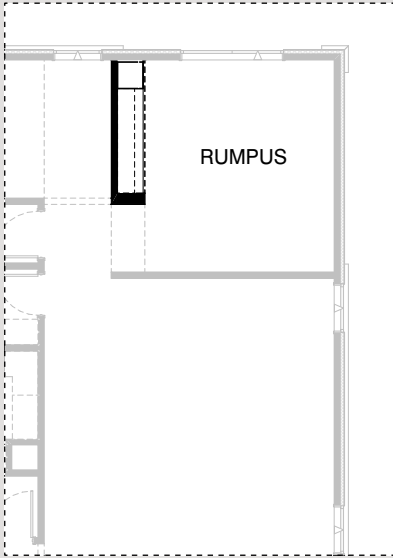
IN09 FF



IN10



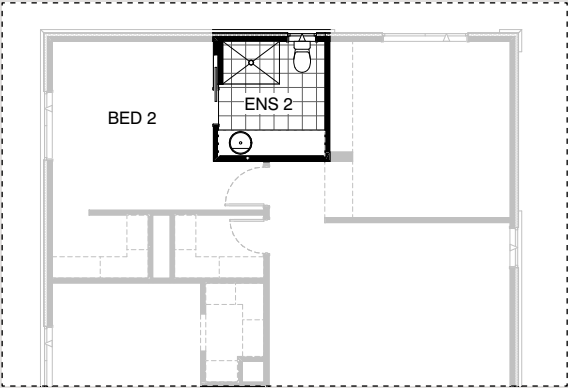
IN11



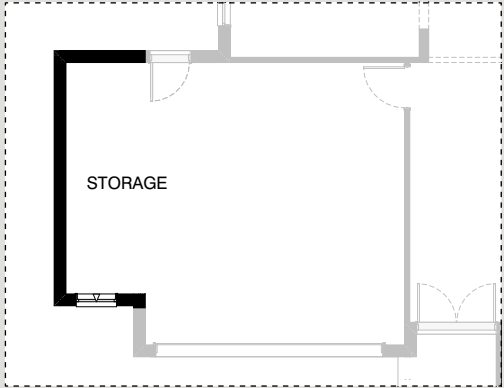
IN12



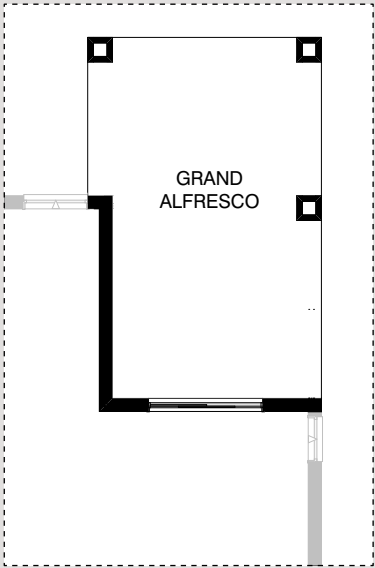
INTERNAL OPTIONS



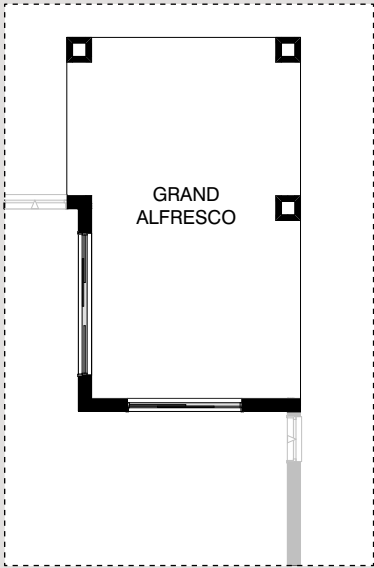
IN13



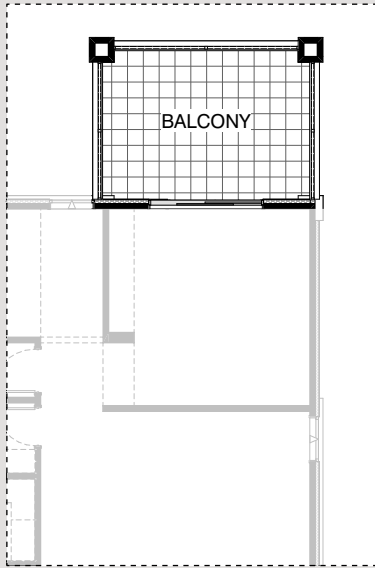
G01



EX01



EX02 GF



EX02 FF

PARISH 47

OPTION DESCRIPTIONS

Kitchen Option 01

Provide Butler's Pantry in lieu of Walk-in Pantry, including:
single bowl sink,
1No. 800mm base cupboard,
1No. 400mm base cupboard,
1No. 350mm base cupboard,
lamine open shelf over Ref. space,
1No. 400mm laminated Pantry unit,
1800mm high x 450mm wide adjustable open shelving unit,
adjust plumbing stack as shown.
Provide additional 820mm cavity sliding door access to Laundry.

Kitchen Option 02

Provide Kitchen upgrade option with Butler's Pantry in lieu of Walk-in Pantry.
Kitchen includes:
Relocated Ref. space with open shelf over,
900mm cooktop,
900mm retractable rangehood,
3No. 900mm base cupboards,
3No. 800mm base cupboards,
2No. 300mm base cupboards facing Family room,
2No. 900mm overhead cupboards,
2No. 600mm laminated oven towers with microwave provisions,
2No. 180mm laminated wine racks,
1200mm deep benchtop with single bowl sink.
Butler's Pantry includes:
additional L-shaped benchtop and tiled splashback,
1No. 900mm base cupboard,
1No. 900mm corner base cupboard,
1No. 450mm drawer unit,
1No. 700mm base cupboard,
1No. 300mm base cupboard,
1No. dishwasher provision,
double bowl sink,
1800mm high x 450mm wide adjustable open shelving unit,
additional 1No. 514mm x 1450mm aluminium fixed window with no bottom reveal.
Relocate plumbing stack as shown.

Kitchen Option 03

Provide Kitchen upgrade option with rotated 3-way benchtop with 1200mm deep island bench, Butler's Pantry in addition to Walk-in Pantry and built-in Bar facing Family room.
Kitchen includes:
1200mm deep clear island bench,
900mm cooktop,
900mm retractable rangehood,
450mm drawer unit,
5No. 900mm base cupboards,
2No. 300mm base cupboards facing Meals,
2No. 900mm overhead cupboards,
2No. 600mm laminate oven towers with microwave provision,
2No. 400mm laminated Pantry units.
Butler's Pantry includes:
additional 600mm benchtop with tiled splashback,
1No. open shelf over Ref. space,
1No. 900mm base cupboard,
2No. 400mm base cupboards,
dishwasher provision,
double bowl sink,
additional 1No. 1200mm x 1810mm aluminium fixed window with no bottom reveal.
Provide additional 820mm cavity sliding door access

through to Laundry.

Bar includes:
additional 600mm benchtop with tiled splashback,
2No. 900mm base cupboards,
4No. 180mm laminated wine racks,
single bowl sink,
2No. 300mm deep 60mm thick open shelves

Kitchen Option 04

Provide Kitchen upgrade option with rotated 3-way benchtop with 1200mm deep island bench, Butler's Pantry in addition to Walk-in Pantry and built-in Study Nook facing Family room.
Kitchen includes:
1200mm deep clear island bench,
900mm cooktop,
900mm retractable rangehood,
450mm drawer unit,
dishwasher provision,
double bowl sink,
2No. 900mm base cupboards,
2No. 800mm base cupboards,
4No. 450mm base cupboards,
2No. 300mm base cupboards facing Meals,
2No. 450mm overhead cupboards,
2No. 600mm laminate oven towers with microwave provisions,
1No. 900mm laminated Pantry unit,
1No. open shelf over Ref. space.
1No. 1200mm x 2410mm aluminium fixed window with no bottom reveal in lieu of standard.
Butler's Pantry includes:
additional 600mm deep benchtop with tiled splashback,
single bowl sink,
1No. 900mm base cupboard,
1No. 800mm base cupboard,
2No. 1800mm high x 450mm wide adjustable open shelvings unit,
1No. 820mm cavity sliding door.
Provide additional 820mm cavity sliding door access through to Laundry.
Study Nook includes:
additional 600mm deep benchtop
2No. 450mm laminated Linen units,
2No. 300mm deep 60mm thick open shelves.

Laundry Option 01

Provide Laundry upgrade with laminate base and overhead cupboards and inset trough, including:
2No. 800mm base cupboards,
2No. 800mm overhead cupboards,
32mm laminate benchtop and tiled splashback to suit.

Laundry Option 02

Provide Laundry upgrade with laminate base & overhead cupboards and inset trough, including:
1No. 800mm base cupboard,
3No. 800mm overhead cupboards,
2No. 800mm laminated Linen units,
additional 32mm laminate benchtop and tiled splashback to suit.
Bench height increases to 950mm from FFL with open space beneath benchtop for side by side washer and dryer.



PARISH 47

OPTION DESCRIPTIONS

Ensuite Option 01

Provide Ensuite 1 and WIR 1 upgrade option, including:
1780mm freestanding bath,
1No. 2082mm vanity with wall-to-wall benchtop and double basins
1 row tiling beneath mirror to suit including returns,
1770mm x 980mm wall-to-wall tiled shower base.
Provide 600mm 32mm deep laminate benchtop to Dressing in lieu of 1No. 450mm shelving,
provide 2No. 450mm drawer units under desk.
Remove Linen cupboard.

Ensuite Option 02

Provide Ensuite 1 upgrade option with re-arranged layout, including:
1No. 1782mm vanity with wall-to-wall benchtop with double basins
1 row tiling beneath mirror to suit including returns,
1850mm x 1000mm wall-to-wall tiled shower base,
enclosed WC with 720mm hinged door,
1No. 1200mm x 610mm aluminium awning window to toilet in lieu of standard,
1No. 1200mm x 850mm aluminium awning window to Ensuite 1 in lieu of standard,
relocated WIR 1 with 3No. 450mm shelving.
Relocate 820mm hinged entry door to Bed 1.
Provide additional built-in Robe with sliding doors and 450mm shelf and hanging rail.
Option increases Bed 1 by 630mm and adjust Robe to suit.

Ensuite Option 03

Provide Ensuite 1 upgrade option with re-arranged layout, including:
1780mm freestanding bath,
2No. 1282mm vanity with wall-to-wall benchtop with single basins,
1 row tiling beneath mirror to suit including returns,
1500mm x 900mm tiled shower base,
enclosed Powder room with wall basin,
720mm hinged door and
720mm cavity sliding doors,
1No. 1200mm x 1810mm aluminium awning window over bath in lieu of standard.
Relocate WIR 1 and provide
3No. 450mm shelving with hanging rail.
Relocate 820mm hinged access door to Bed 1 as shown.
Option decreases Bed 1 by 150mm and adjust Robe to suit.

Internal Option 01

Provide Guest Ensuite upgrade option, including:
1820mm x 900mm wall-to-wall tiled shower base in lieu of standard.

Internal Option 02

Provide Powder room upgrade option, including:
1782mm vanity with wall-to-wall benchtop and single basin offset to the left,
adjust height of window to suit
flush on benchtop with no bottom reveal.

Internal Option 03

Provide Study Nook under stairs with built-in joinery including:
600mm deep 32mm thick laminate benchtop,
1No. 600mm drawer unit under desk.

Internal Option 04

Provide built-in joinery to Meals to create Daybed, including:
600mm deep 32mm thick laminate benchtop,
5No. 700mm T.V unit drawers,
1No. 514mm x 2410mm aluminium awning window in lieu of standard.
Move 1800mm x 1210mm aluminium awning window as shown to

accommodate.

Internal Option 05

Provide built-in joinery to Media room, including:
450mm deep 32mm thick laminate benchtop,
2No. 800mm T.V unit cupboards,
1No. 700mm T.V unit cupboard,
2No. 300mm deep 60mm thick open shelves,
2No. 800mm laminated cupboards.
Provide 1457mm x 1810mm aluminium awning window in lieu of standard.

Internal Option 06

Provide Home Office with built-in joinery in lieu of Media room, including:
2No. 720mm bi-parting cavity sliding doors,
2No. 600mm deep 32mm thick laminate benchtops,
3No. 800mm T.V unit cupboards,
2No. 300mm deep 60mm thick open shelves,
4No. 800mm laminated cupboards.
Provide 2095mm x 1450mm aluminium sliding door in lieu of standard.

Internal Option 07 GF

Provide double height void over Meals area by removing Activity above.
Provide 2No. 1800mm x 850mm aluminium fixed windows to First floor in lieu of standard,
provide extension to 1020mm high dwarf wall balustrade.

Internal Option 07 FF

Provide double height void over Meals area by removing Activity above.
Provide 2No. 1800mm x 850mm aluminium fixed windows to First floor in lieu of standard,
provide extension to 1020mm high dwarf wall balustrade.

Internal Option 08 GF

Provide Real Flame Inspire 900 gas fire place
400mm off floor level in a 1140mm x 500mm boxed out plaster wall with a 4 sided black fascia to Family room side wall with capped gas point, option with double height stud and plaster voids,
2No. 2057mm x 1210mm aluminium fixed windows to Ground floor and
2No. 1200mm x 1210mm aluminium fixed windows to First floor in lieu of standard.

Note:
Option only available with Internal07.

Internal Option 08 FF

Provide Real Flame Inspire 900 gas fire place
400mm off floor level in a 1140mm x 500mm boxed out plaster wall with a 4 sided black fascia to Family room side wall with capped gas point, option with double height stud and plaster voids,
2No. 2057mm x 1210mm aluminium fixed windows to Ground floor and
2No. 1200mm x 1210mm aluminium fixed windows to First floor in lieu of standard.

Note:
Option only available with Internal07.



PARISH 47

OPTION DESCRIPTIONS

Internal Option 09 GF

Provide floor plan option which relocates Bed 1, Ensuite and WIR 1 to the Ground floor in lieu of Living and Guest to suite. Provide additional Bedroom, Home Office, Bar and Games room to First floor

in lieu of Bed 1 and Ensuite.

New Ensuite includes:

1No. 2082mm vanity with wall-to-wall benchtop with double basins, including 1 row tiling beneath mirror to suit including returns, 1450mm x 880mm wall-to-wall tiled shower base, enclosed WC with 720mm hinged door,

1No. 1029mm x 610mm aluminium awning window to toilet, 1No. 1200mm x 1810mm aluminium awning window to Ensuite 1 in lieu of standard.

and 1200mm x 610mm aluminium awning window to new WIR 1.

Provide additional Linen cupboard with 870mm hinged door and 4No. 450mm shelving.

Bar to First floor includes:

600mm deep 32mm thick laminate benchtop with tiled splashback, single bowl sink,

2No. 800mm base cupboards,

1No. 400mm base cupboard,

2No. 300mm deep 60mm thick open shelves.

Internal Option 09 FF

Provide floor plan option which relocates Bed 1, Ensuite and WIR 1 to the Ground floor in lieu of Living and Guest to suite. Provide additional Bedroom, Home Office, Bar and Games room to First floor

in lieu of Bed 1 and Ensuite.

New Ensuite includes:

1No. 2082mm vanity with wall-to-wall benchtop with double basins, including 1 row tiling beneath mirror to suit including returns, 1450mm x 880mm wall-to-wall tiled shower base, enclosed WC with 720mm hinged door,

1No. 1029mm x 610mm aluminium awning window to toilet,

1No. 1200mm x 1810mm aluminium awning window to Ensuite 1 in lieu of standard.

and 1200mm x 610mm aluminium awning window to new WIR 1.

Provide additional Linen cupboard with 870mm hinged door and 4No. 450mm shelving.

Bar to First floor includes:

600mm deep 32mm thick laminate benchtop with tiled splashback, single bowl sink,

2No. 800mm base cupboards,

1No. 400mm base cupboard,

2No. 300mm deep 60mm thick open shelves.

Internal Option 10

Provide Bathroom and Powder room upgrade option,

Bathroom including:

1780mm freestanding bath,

900mm x 900mm tiled shower base,

1No. 1782mm vanity with wall-to-wall benchtop with double basins, including 1 row tiling beneath mirror including returns.

Powder room including:

1No. 1782mm vanity with wall-to-wall benchtop with single basin offset to the left,

including 1 row tiling beneath including returns.

Provide 2No. 720mm cavity sliding doors to Bathroom to create 'Jack n Jill' style Ensuites.

Relocate heating stack to WIR 4 as shown.

Internal Option 11

Provide built-in joinery to Study Nook, including:

600mm deep 32mm thick laminate benchtop,

1No. 450mm drawer unit under desk,

1No. 450mm laminated cupboard.

Reduce the bulkhead depth to 108mm.

Internal Option 12

Provide built-in joinery to Rumpus, including:

450mm deep 32mm thick laminate benchtop,

2No. 900mm T.V unit cupboard,

2No. 300mm deep 60mm thick open shelves over,

1No. 450mm laminated cupboard.

Reduce the bulkhead depth to 108mm.

Internal Option 13

Provide Ensuite option to Bed 2 in lieu of Study, including:

1No. 2082mm vanity with wall-to-wall benchtop with

single basin offset to the right,

including 1 row tiling beneath mirror including returns.

1200mm x 900mm tiled shower base,

toilet pan with 1200mm x 610mm aluminium awning window over in lieu of standard.

Provide 720mm cavity sliding door.

Garage Option 01

Provide extension to Garage to create additional Storage area including

1No. 2057mm x 850mm aluminium awning feature window.

Increases width of the home by 1680mm.

Increases area of the home by 9.07m²

External Option 01

Provide Grand Alfresco to Ground floor, including:

2No. 470mm x 470mm additional brick piers and tiled roof over.

Increases length of home by 3000mm,

Increases area of the home by 13.29m²

External Option 02 GF

Provide Grand Alfresco with additional

2No. 470mm x 470mm brick piers,

1No. 2095mm x 2690mm aluminium sliding door.

Adds 13.29m² to the ground floor area of the home.

Provide tiled Balcony with powder-coated balustrade to First floor,

1No. 2095mm x 2170mm aluminium sliding door

in lieu of standard window.

Adds 12.63m² to the First floor area of the home.

External Option 02 FF

Provide Grand Alfresco with additional

2No. 470mm x 470mm brick piers,

1No. 2095mm x 2690mm aluminium sliding door.

Adds 13.29m² to the ground floor area of the home.

Provide tiled Balcony with powder-coated balustrade to First floor,

1No. 2095mm x 2170mm aluminium sliding door

in lieu of standard window.

Adds 12.63m² to the First floor area of the home.

