



**FLOORPLAN OPTIONS**

We personalise our floorplans. Talk to us about our huge range of ready-to-go design options or simply visit [www.burbank.com.au/south-australia](http://www.burbank.com.au/south-australia) for more details.

Listed details based on Sheffield facade floorplan (illustrated)

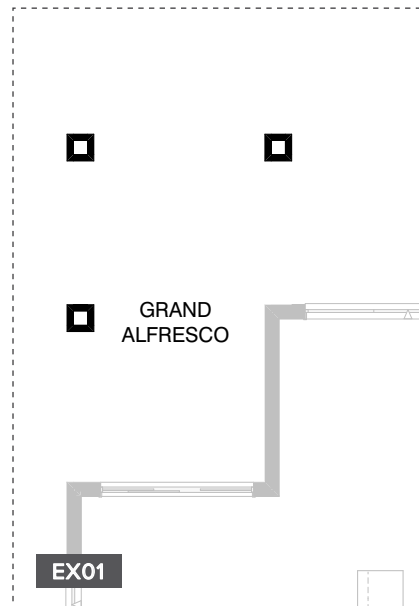
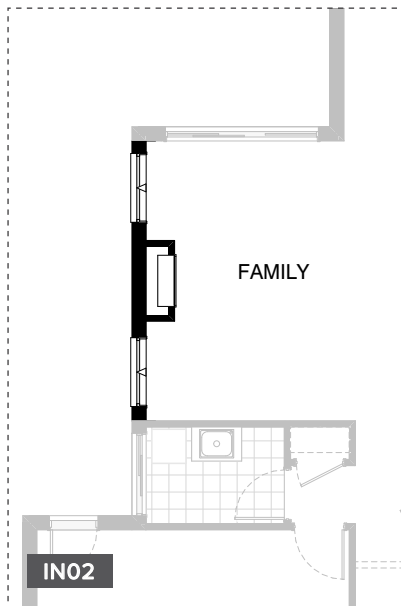
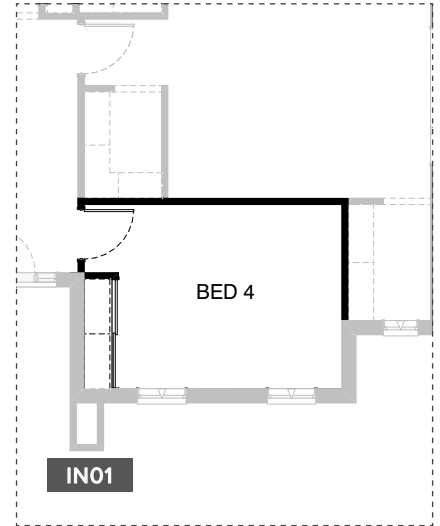
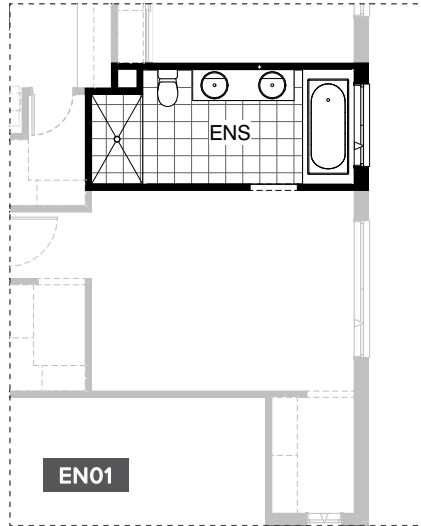
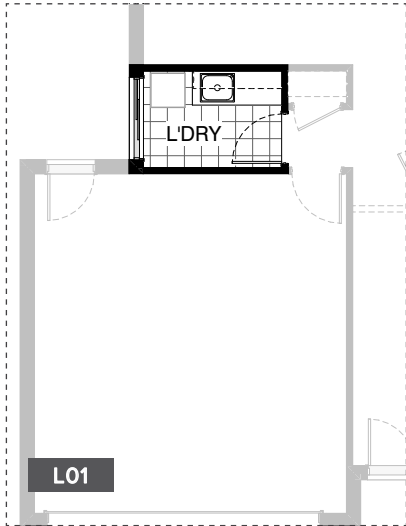
**Facades available:**

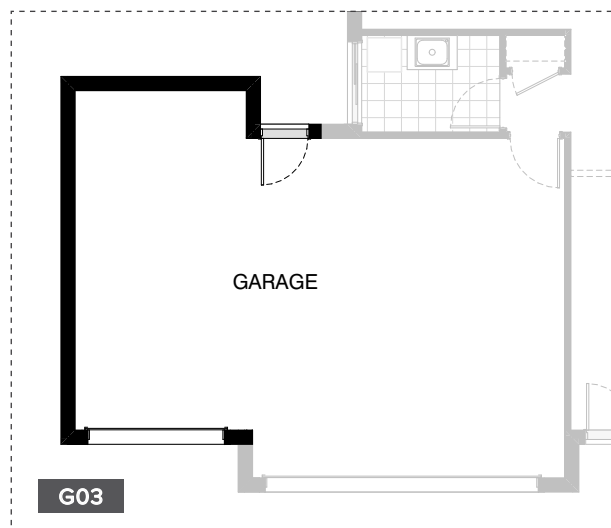
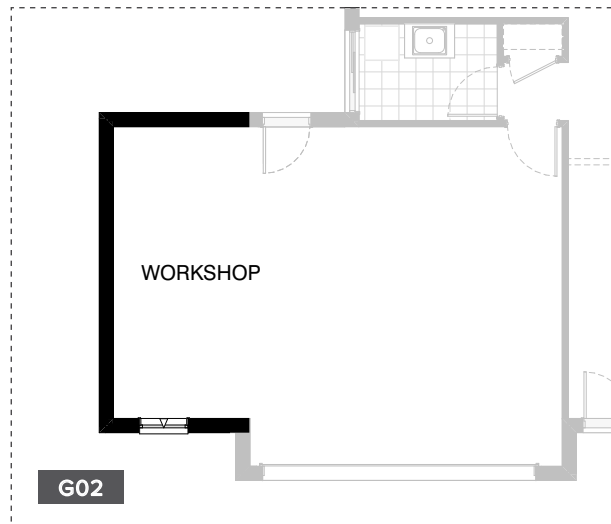
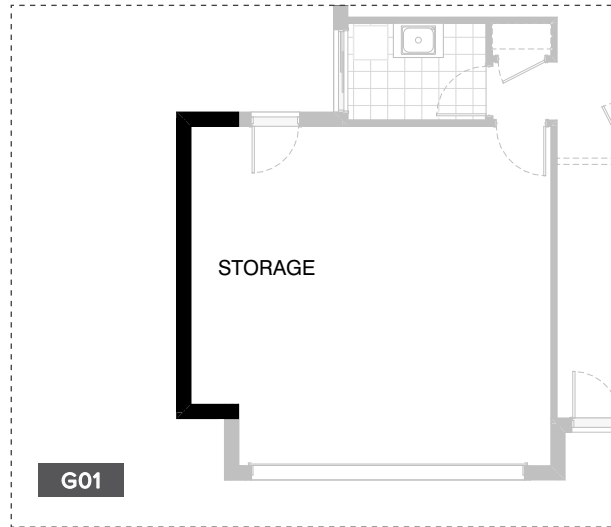
|                               |               |
|-------------------------------|---------------|
| Sheffield, Aster, Eastwood,   |               |
| Hartford, Lancaster, Leawood, |               |
| Newbury, Wiltshire            |               |
| <b>Overall home width</b>     | <b>14.15m</b> |
| <b>Overall home length</b>    | <b>18.47m</b> |

|              |                           |               |
|--------------|---------------------------|---------------|
| Residence    | 170.7m <sup>2</sup>       | 18.4sq        |
| Garage       | 36.5m <sup>2</sup>        | 3.9sq         |
| Porch        | 6.2m <sup>2</sup>         | 0.7sq         |
| Alfresco     | 10.9m <sup>2</sup>        | 1.2sq         |
| <b>Total</b> | <b>224.3m<sup>2</sup></b> | <b>24.1sq</b> |

\*Copyright conditions. All photos and illustrations are representative only. Floor plans and specifications may be varied by Burbank without notice, the dimensions are diagrammatic only and a Building Contract with final drawings will display correct dimensions and detail. All designs are the property of Burbank and must not be used, reproduced, copied or varied, wholly or in part without written permission from an authorised Burbank representative. Copyright Burbank Australia (SA) Pty Ltd. ABN 96 165 533 406. BLD 266709.

**Call 13 BURBANK**  
**Visit [burbank.com.au](http://burbank.com.au)**





**OPTION DESCRIPTIONS****L01 - Laundry Option 01**

Provide Laundry upgrade including insert trough,  
1No. 800mm base cupboard,  
1No. 700mm overhead cupboard  
1No. 800mm base cupboard,  
1No. 700mm overhead cupboard and with additional benchtop and tiled splashback to suit.

**EN01 - Ensuite Option 01**

Provide Ensuite upgrade Including:  
1580mm x 900mm wall to wall tiled shower,  
1782mm vanity with double basins and centre shelf unit in lieu of standard,  
Delete plaster lined enclosed WC and  
1No. 720mm flush panel hinged door and relocate toilet and shower to suit.

**IN01 - Internal Option 01**

Provide Bed 4 option in lieu of standard Lounge and provide 1No. 870mm flush panel hinged door and site built plaster lined Robe with sliding doors,  
1No. hanging rail and shelf to suit.

**IN02 - Internal Option 02**

Provide Real Flame Inspire 900 gas fireplace, 400mm off floor level in a 1400mm x 500mm boxed out plaster wall with a 4 sided black fascia to Family room side wall with capped gas point.  
Provide 2No. 1800mm x 1210mm aluminium awning windows in lieu of standard.

**EX02 - EXternal Option 01**

Provide Grand Alfresco option with additional 2No. 470mm x 470mm brick piers and earth floor to Alfresco.  
Increases length by 3000mm.  
Increases area by 11.85m<sup>2</sup>.

**G01 - Garage Option 01**

Provide extension to Garage to create additional Storage area.  
Increases width by 840mm.  
Increases area by 4.53m<sup>2</sup>.

**G02 - Garage Option 02**

Provide extension to Garage to create Workshop area including:  
1No. 1800mm x 850mm aluminium awning feature window.  
Increases width by 2400mm.  
Increases area by 13.51m<sup>2</sup>.

**G03 - Garage Option 03**

Provide triple car Garage including:  
1No. 2140mm x 2410mm approx. garage door as per colour selection.  
Increases width by 3120mm.  
Increases area by 20.51m<sup>2</sup>.