

FLOORPLAN OPTIONS

We personalise our floorplans. Talk to us about our huge range of ready-to-go design options or simply visit www.burbank.com.au/south-australia for more details.

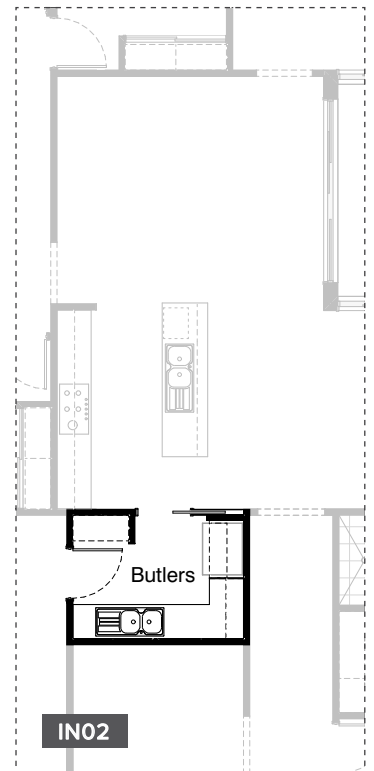
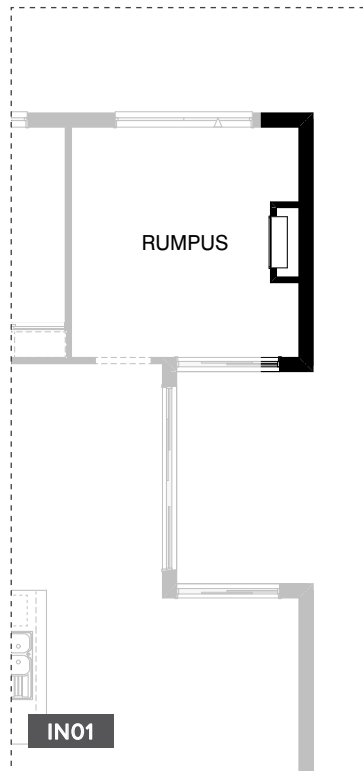
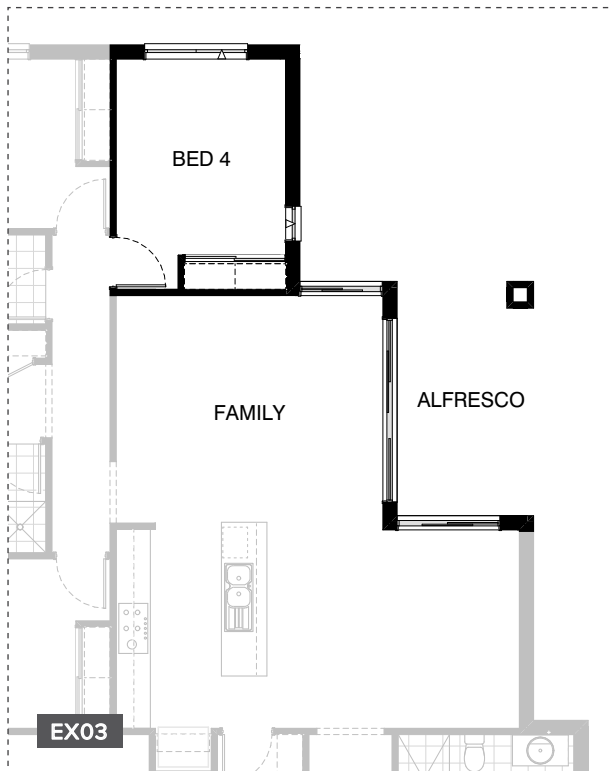
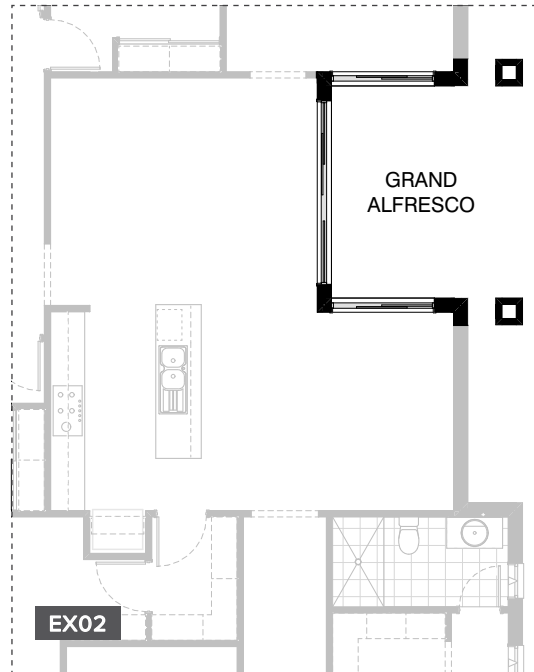
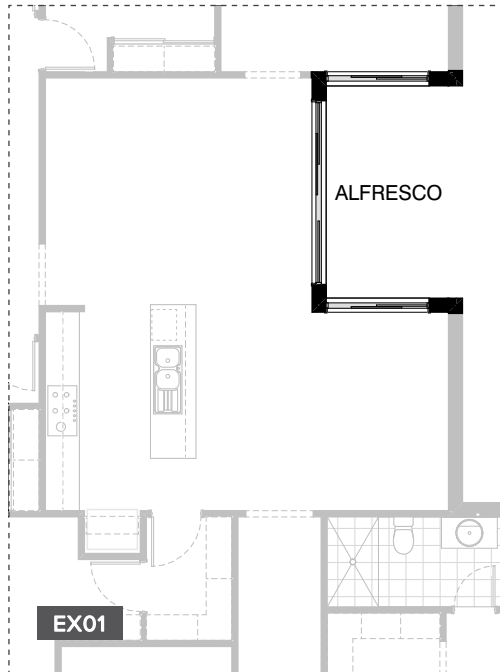
Listed details based on Sheffield facade floorplan (illustrated)

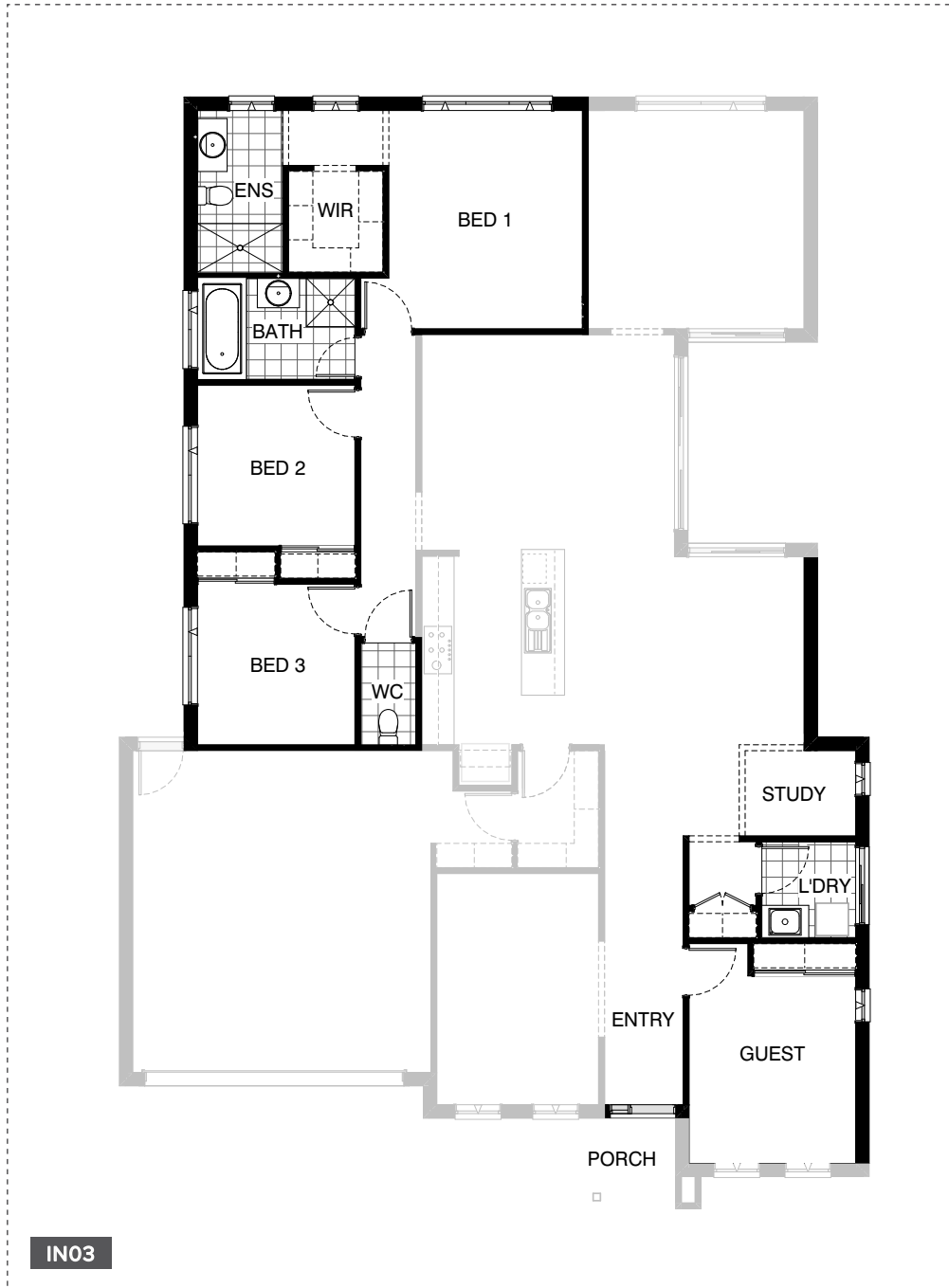
Facades available:

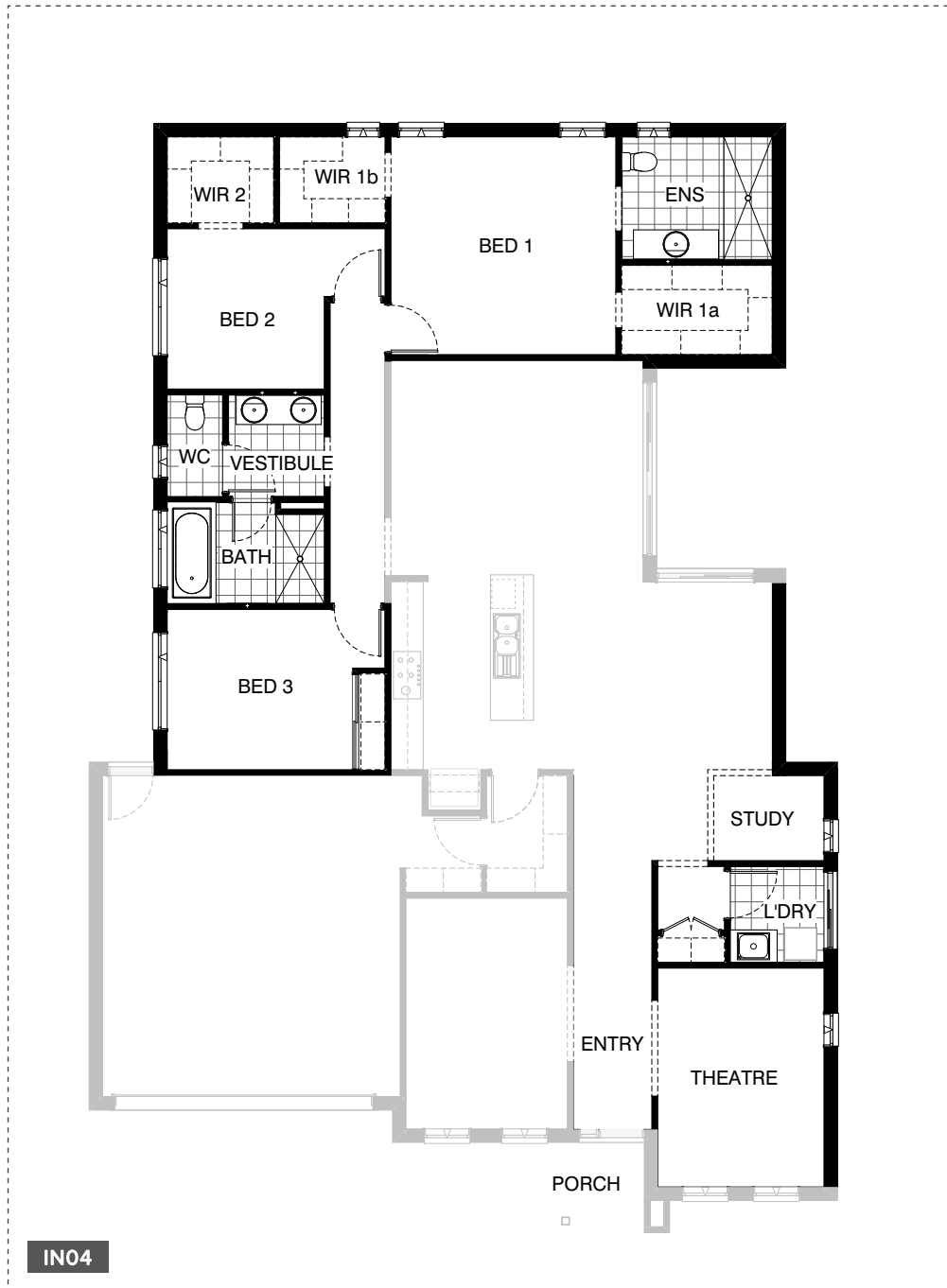
Sheffield, Aster, Eastwood,
Hartford, Lancaster, Leawood,
Newbury, Wiltshire
Overall home width 13.91m
Overall home length 20.63m

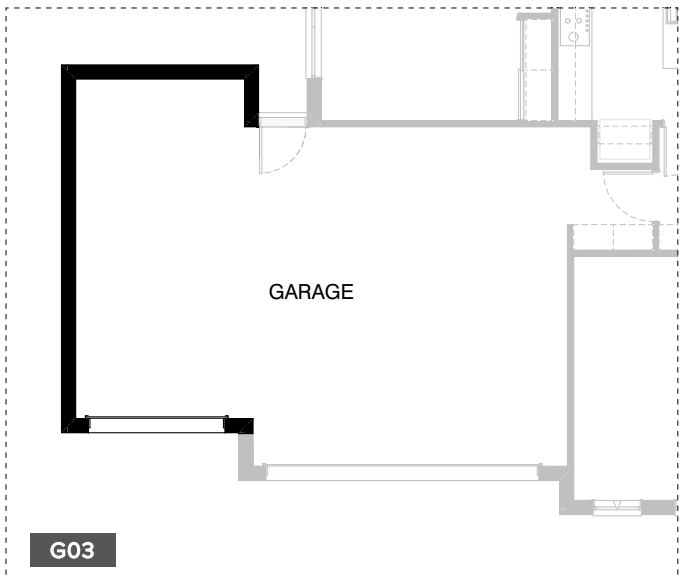
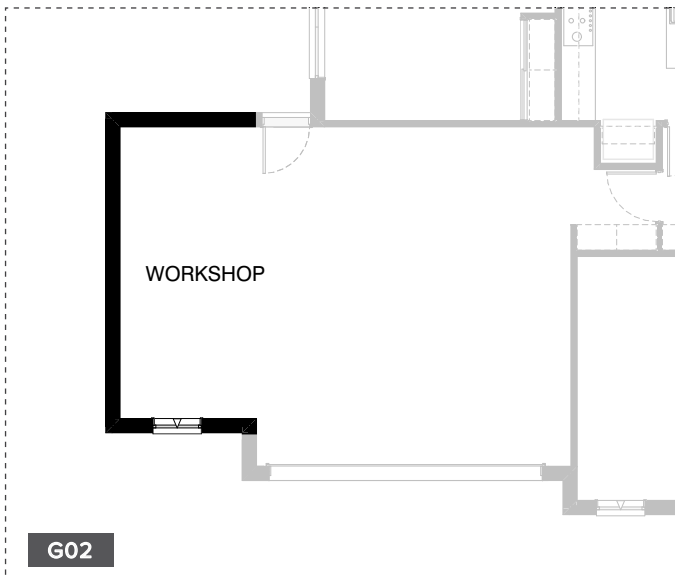
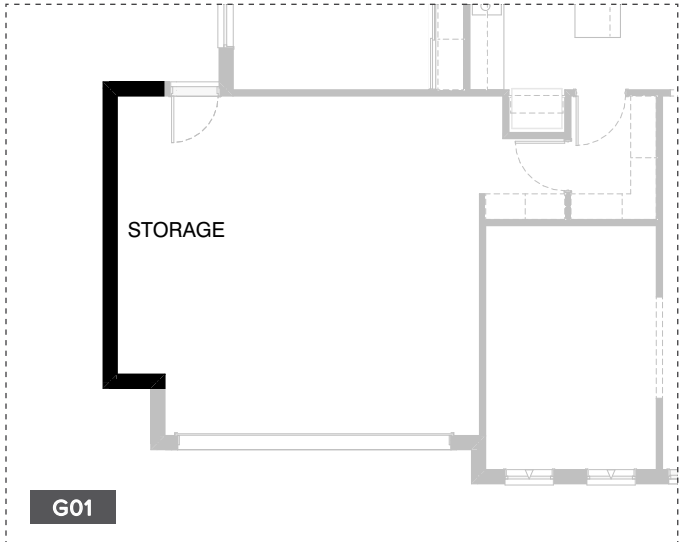
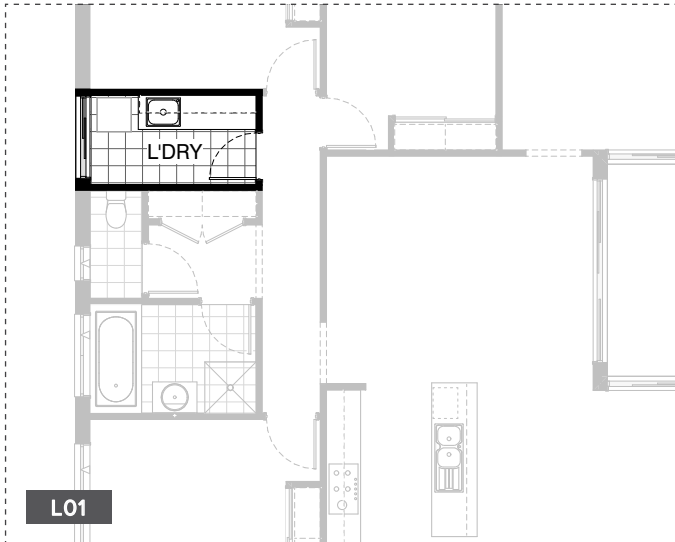
Residence	193.4m ²	20.8sq
Garage	36.4m ²	3.9sq
Porch	2.8m ²	0.3sq
Total	232.6m²	25.0sq

*Copyright conditions. All photos and illustrations are representative only. Floor plans and specifications may be varied by Burbank without notice, the dimensions are diagrammatic only and a Building Contract with final drawings will display correct dimensions and detail. All designs are the property of Burbank and must not be used, reproduced, copied or varied, wholly or in part without written permission from an authorised Burbank representative. Copyright Burbank Australia (SA) Pty Ltd. ABN 96 165 533 406. BLD 266709.





**IN04**



OPTION DESCRIPTIONS**EX01 - External Option 01**

Provide Alfresco option with earth floor.
Increases area by 9.0m².

EX01 - External Option 02

Provide Grand Alfresco option with earth floor and
2No. 470mm x 470mm brick piers
Increases area by 13.44m².
Increases width by 960mm.

EX03 - External Option 03

Provide Alfresco option with
1No. 470mm x 470mm brick pier and earth floor to Alfresco.
Delete Rumpus and provide additional
1No. 1200mm x 610mm aluminium awning window to Bed 4 &
1No. 2095mm x 1450mm aluminium sliding door to Family.
Decreases area by 8.14m².

IN01 - Internal Option 01

Provide Real Flame Inspire 900 gas fireplace,
400mm off floor level in a
1400mm x 500mm boxed out plaster wall
with a 4 sided black fascia to
Rumpus room side wall with capped gas point.

IN02 - Internal Option 02

Provide Butlers Pantry upgrade in lieu of
WIP and Mud off Garage with 870mm
cavity sliding door,
450mm shelving and nib wall.
Relocated Ref. space with
960mm overhead cupboard and
600mm benchtop to two walls of Butlers.
1No. 600mm overhead cupboard,
400mm overhead cupboard adjoining Ref. space.
2No. 700mm base cupboards,
1No. 900mm base cupboard with sink,
1No. 900mm blind cupboard & 1No. 450mm door.

IN03 - Internal Option 03

Provide alternative layout with
additional Study and Guest bedroom
with relocation of Bed 1, Ensuite, WIR,
Laundry, Bath, Bed 2, Bed 3 and WC.

IN04 - Internal Option 04

Provide alternative layout with
additional Study and Theatre to suit.

L01 - Laundry Option 01

laminated insert trough,
2No. 800mm base cupboards,
1No. 400mm base cupboard,
2No. 800mm overhead cupboards,
1No. 400mm overhead cupboard
with additional tiled splash back and
benchtop to suit.

G01 - Garage Option 01

Provide extension to Garage to
create additional Storage area.
Increases area by 4.53m².
Increases width by 840mm.

G02 - Garage Option 02

Provide extension to Garage to create
Workshop area including
1No. 1800mm x 850mm aluminium
awning feature window to suit.
Increases width by 2400mm.
Increases area by 13.51m².

G03 - Garage Option 03

Provide triple car Garage including
1No. 2140mm x 2410mm
Garage as per colour selection.
Increases area by 20.48m².
Increases width by 3120mm.