

# GLENMONT 24

4 2 2

Total squares 24.1sq

**B**  
SERIES

Minimum  
Lot Width  
12.5m

Minimum  
Lot Length  
30.0m



**Design Dimensions**  
11,030mm(W) x 23,150mm(L),

**Facade Choices**  
Brentwood, Glendale, Inglewood,  
Malibu, Northridge, Pasadena, Santa Monica.  
Details based on Inglewood façade floorplan (illustrated)

#### DESIGN DIMENSIONS

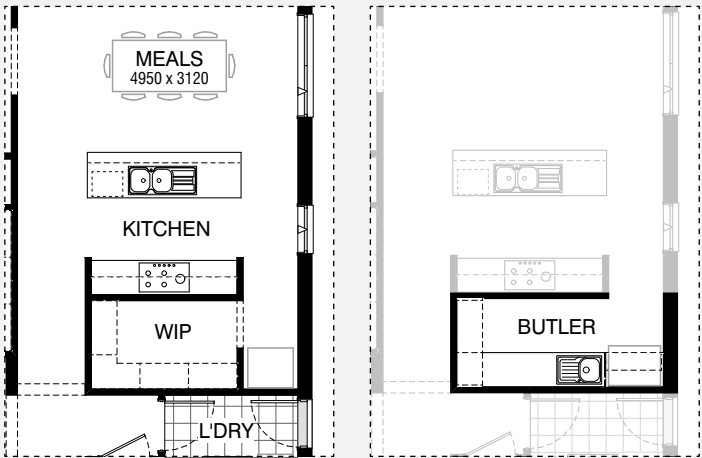
Residence	181.8m <sup>2</sup>	19.6sq
Garage	36.3m <sup>2</sup>	3.9sq
Porch	5.8m <sup>2</sup>	0.6sq
<b>Total</b>	<b>223.9m<sup>2</sup></b>	<b>24.1sq</b>

**Burbank**

\*Copyright conditions. All photos and illustrations are representative only. Floor plans and specifications may be varied by Burbank without notice, the dimensions are diagrammatic only and a Building Contract with final drawings will display correct dimensions and detail. All designs are the property of Burbank and must not be used, reproduced, copied or varied, wholly or in part without written permission from an authorised Burbank representative. Copyright Burbank Australia Pty Ltd. ABN 91 007 099 872. Builders Registration Number CDB-U-52603.

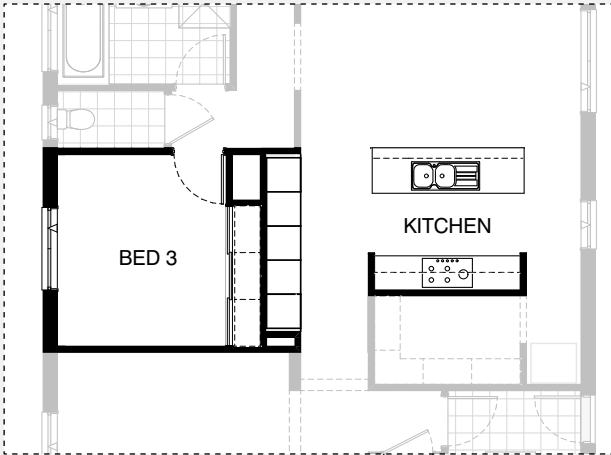
# GLENMONT 24

4 2 2

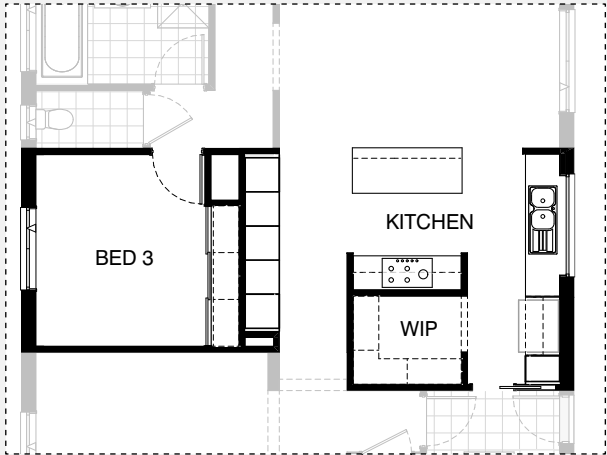


Master Kitchen design

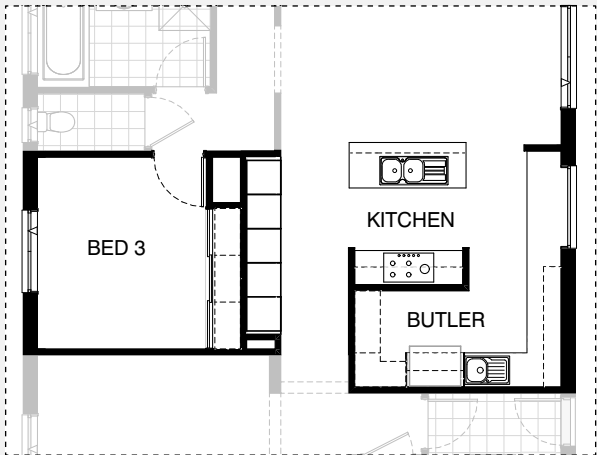
K01



K02



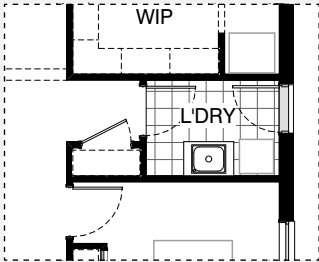
K03



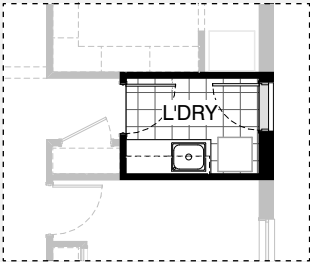
K04

# GLENMONT 24

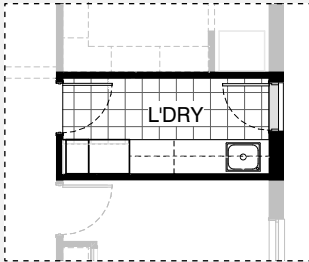
4 2 2



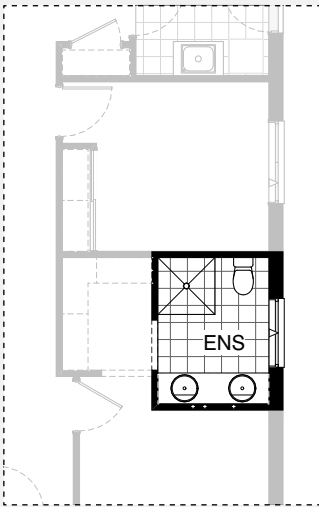
Master Laundry design



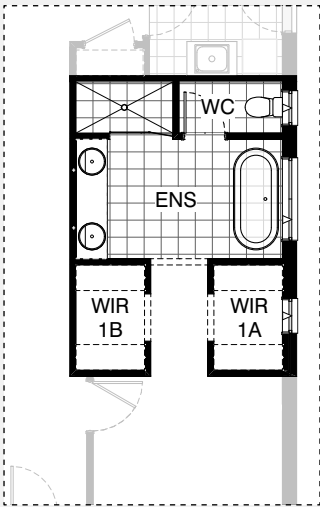
LD01



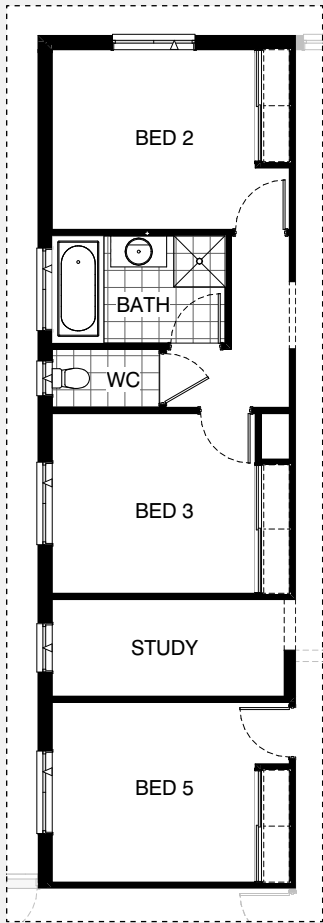
LD02



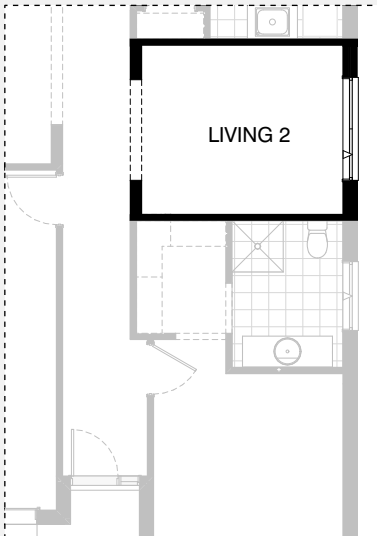
EN01



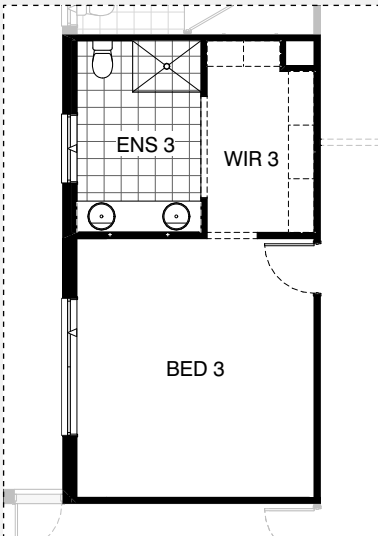
EN02



IN01



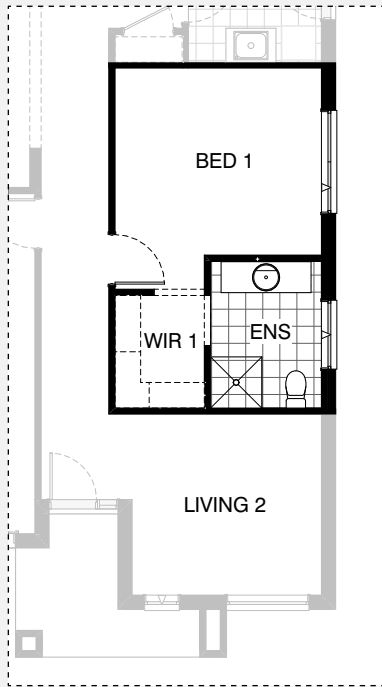
IN02



IN03

# GLENMONT 24

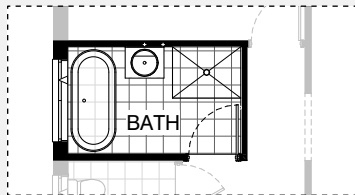
4 2 2



IN04



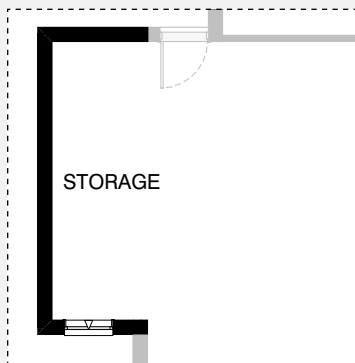
IN05



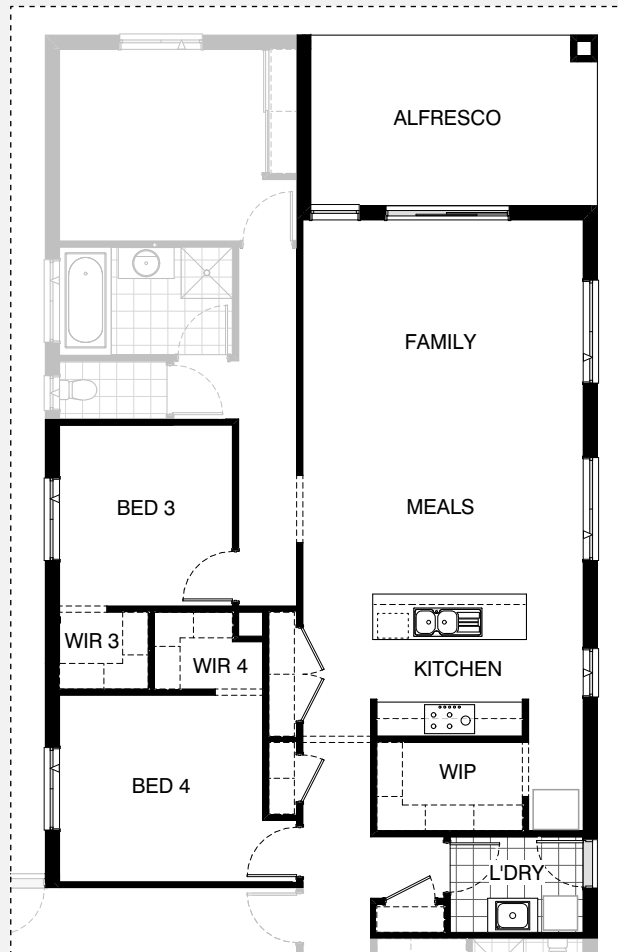
IN06



EX02



EX01



EX01

# GLENMONT 24

## OPTION DESCRIPTIONS

### Option Kitchen 01

Provide Kitchen upgrade option with Butler's Pantry in lieu of Walk-in Pantry, including:

1No. single bowl sink,  
1No. 900mm base cupboard,  
1No. 800mm base cupboard,  
1No. 400mm base cupboard,  
1No. open shelf over Ref. space,  
additional 20mm stone benchtop and tiled splashback to suit. Provide 1800mm high adjustable open shelving unit.

### Option Kitchen 02

Provide built-in joinery to Kitchen including:

Reduce Bed 3 width by 1210mm and provide  
2No. 600mm laminate oven towers with microwave provisions, 3No. 600mm laminated Pantry units.  
2No. plaster-lined voids.

Also replace under bench oven with 900mm base cupboard and microwave provision with 600mm base cupboard.

Note: Not available with Internal03, Internal05 & External01

### Option Kitchen 03

Provide 3-way Kitchen upgrade option with clear island

2No. 450mm overhead cupboards,  
bench and sink moved to exterior wall, including:

2No. 600mm laminate oven towers with

1No. 900mm retractable rangehood,  
microwave provisions,

1No. 900mm cooktop,

3No. 600mm laminated Pantry units,

1No. double bowl sink,

1No. 450mm laminated Pantry unit,

1No. 450mm drawer unit,

1No. open shelf over Ref. space,

1No. dishwasher provision,  
additional 20mm stone benchtop and

2No. 900mm base cupboards,

tiled splashback to suit.

2No. 700mm base cupboards,

Provide 1200mm x 1810mm aluminium fixed window 4No. 450mm base

cupboards, over sink in lieu of standard with no bottom reveal. Provide

720mm cavity sliding door through to Laundry.

Note: Not available with Internal03, Internal05 & External01

### Option Kitchen 04

Provide 3-way Kitchen upgrade option with Butler's

Pantry in lieu of Walk-in Pantry, including:

1No. 800mm overhead cupboard,

1No. 900mm retractable rangehood,

2No. 450mm overhead cupboards,

1No. 900mm cooktop,

1No. 400mm overhead cupboard,

1No. double bowl sink,

2No. 600mm laminate oven towers with

1No. 450mm drawer unit,

microwave provisions,

1No. dishwasher provision,

3No. 600mm laminated Pantry units,

2No. 900mm base cupboards,

1No. open shelf over Ref. space,

5No. 800mm base cupboards,

additional single bowl sink,

1No. 900mm corner base cupboard,

additional 20mm stone benchtop and

2No. 450mm base cupboards,

tiled splashback to suit.

Provide 1200mm x 1450mm aluminium fixed window in lieu of standard with no bottom reveal.

Note: Not available with Internal03, Internal05 & External01

### Option Laundry 01

Provide Laundry upgrade with laminate base and overhead cupboards and inset trough, including:

2No. 700mm base cupboards,

2No. 700mm overhead cupboards,

32mm laminate benchtop and tiled splashback to suit.

### Option Laundry02

Provide Laundry upgrade with laminate base and overhead cupboards and inset trough, including:

1No. 800mm base cupboard,

3No. 800mm overhead cupboards,

1No. 700mm laminate Linen unit,

1No. 400mm laminate Broom unit,

32mm laminate benchtop and tiled splashback to suit.

Increase benchtop height to 950mm and provides

open space under bench to store washing machine

and dryer side-by-side. Relocate hinged access door to Laundry and

remove built-in Linen cupboard.

### Option Ensuite 01

Provide Ensuite upgrade option including: 1No. 1782mm vanity with 1950mm wide wall-to-wall benchtop with double basins, including 1 row tiling beneath mirror to suit including returns, 1000mm x 1000mm tiled shower base.

### Option Ensuite 02

Provide Ensuite upgrade option in lieu of Bed 4, including:

freestanding bath with 1200mm x 1450mm awning window over,

1No. 2082mm vanity with 2100mm wall-to-wall benchtop and double basins,

including 1 row tiling beneath mirror to suit including returns,

1700mm x 900mm wall-to-wall tiled shower base in lieu of standard,

enclosed WC with 720mm hinged door and

1029 x 610mm aluminium awning window over.

Provide 2No. Walk-in Robes in lieu of standard with

1029mm x 610mm aluminium awning window.

Increases size of Bed 1 by 600mm.

Note: Not available with Internal02, Internal04, Internal05 & External01

### Option Internal 01

Floor plan option which provides additional Bedroom and Study to the home in lieu of Living.

Provide additional built-in Robe and 870mm hinged door

in lieu of bulkhead opening to create additional bedroom.

Provide 1200mm x 1450mm aluminium awning window to new bedroom and 1800mm x 850mm aluminium awning window to Study

with 180mm bulkhead opening.

Bed 2 and 3, Bathroom, WC all move slightly to accommodate.

Note: Not available with Internal03, Internal05 & External01

### Option Internal 02

Floor plan option which provides additional Living to the home in lieu of Bed 4.

Remove built-in Robe and 870mm hinged door

and provide bulkhead opening,

provide 1800mm x 1810mm aluminium awning window in lieu of standard.

Note: Not available with Internal04, Internal05 & External01



# GLENMONT 24

## OPTION DESCRIPTIONS

### Option Internal 03

Floor plan option which provides additional Ensuite and Walk-in Robe to Bed 3 in lieu of Living and built-in Robe and relocate 870mm hinged door.

Bed 3 Ensuite includes:

2082mm vanity with 2180mm wall-to-wall benchtop with double basins, including 1 row tiling beneath mirror to suit including returns, 1200mm x 900mm tiled shower base, toilet pan and 1029mm x 1210mm aluminium awning window.

Note:

Not available with Kitchen02, Kitchen03, Kitchen04, Internal01, Internal05 & External01

### Option Internal 04

Floor plan option which provides Living to the front of the home with relocate Bed 1 in lieu of Bed 4. Provide 1800mm x 1810mm aluminium awning window to Bed 1 in lieu of standard.

Note:

Not available with Ensuite02, Internal02, Internal05 & External01

### Option Internal 05

Floor plan option which relocates Bed 1, Ensuite and Walk-in Robe, relocates the Living to the front of the home and provides additional Ensuite to Bed 3.

Ensuite to Bed 4 includes:

1282mm vanity with single basin, toilet pan and 900mm x 900mm tiled shower base, 1200mm x 850mm aluminium awning window.

Hinged door access and Robe flip locations.

Ensuite to Bed 1 includes:

2082mm vanity with 2180mm wall-to-wall benchtop with double vanities, including 1 row tiling beneath mirror to suit including returns, 1200mm x 900mm tiled shower base, toilet pan with 1029mm x 1210mm aluminium awning window.

Note:

Not available with Kitchen02, Kitchen03, Kitchen04, Ensuite02, Internal01, Internal02, Internal03, Internal04, External01

### Option Internal 06

Provide Bathroom upgrade option, including: freestanding bath, 1200mm x 900mm tiled shower base and 682mm vanity in lieu of standard.

### Option External 01

Provide Alfresco option in lieu of Living area with structural concrete floor, 1No. 470mm x 470mm brick pier and tiled hip roof over.

Kitchen, Laundry, Meals and Family relocate to accommodate.

Relocate Bed 4 to Living with Walk-in Robes to Bed 3 and 4 in lieu of standard built-in Robes.

Provide Store and Coats cupboards with 2No. 820mm hinged doors to Store. Hinged door access to Bed 3 moves.

Note:

Not available with Kitchen02, Kitchen03, Kitchen04, Ensuite02, Internal01, Internal02, Internal03, Internal04 & Internal05

### Option External 02

Provide Alfresco option with structural concrete floor, 2No. 470mm x 470mm brick piers and extension of tiled hip roof.

Note:

Increases length of home by 3.0m

Increases floor area by 15.84m<sup>2</sup> and requires minimum 32m lot length

### Option Garage 01

Provide extension to Garage to create additional Storage area including additional 2057mm x 850mm aluminium awning feature window. Increases width of the home by 1680mm.

Increases area of the home by 9.07m<sup>2</sup>

