



FLOORPLAN OPTIONS

We personalise our floorplans. Talk to us about our huge range of ready-to-go design options or simply visit www.burbank.com.au/south-australia for more details.

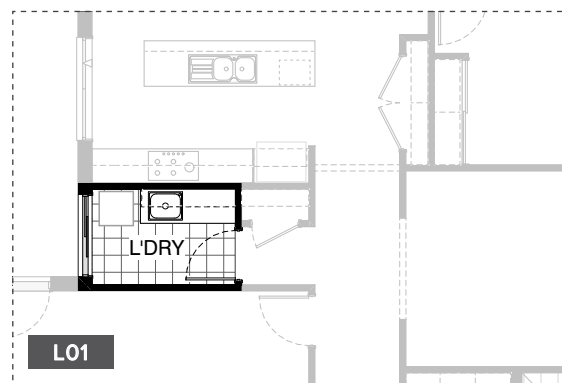
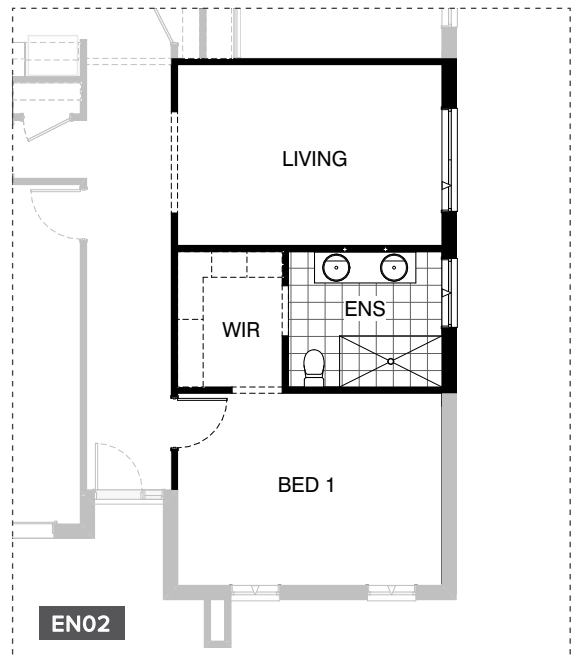
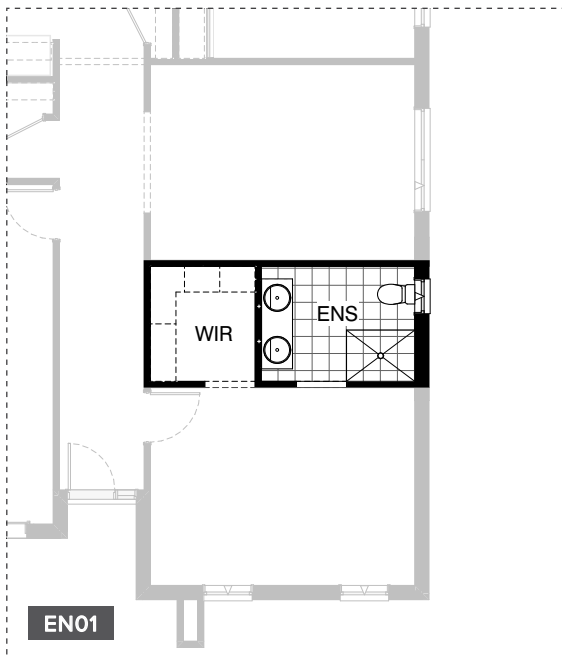
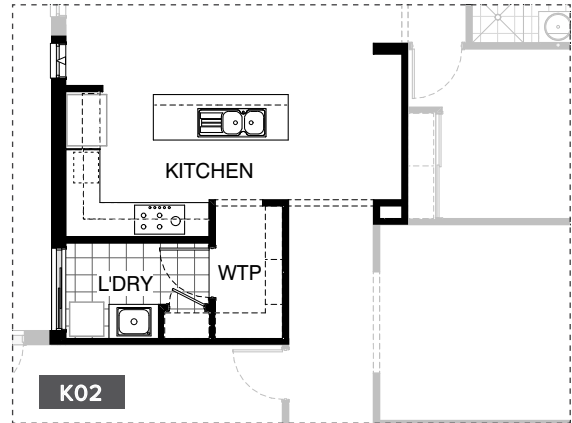
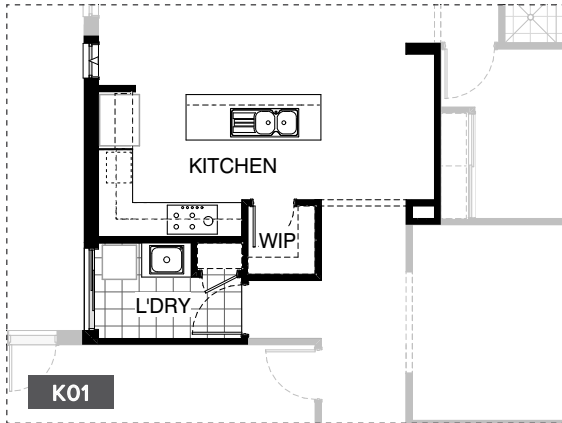
Listed details based on Sheffield facade floorplan (illustrated)

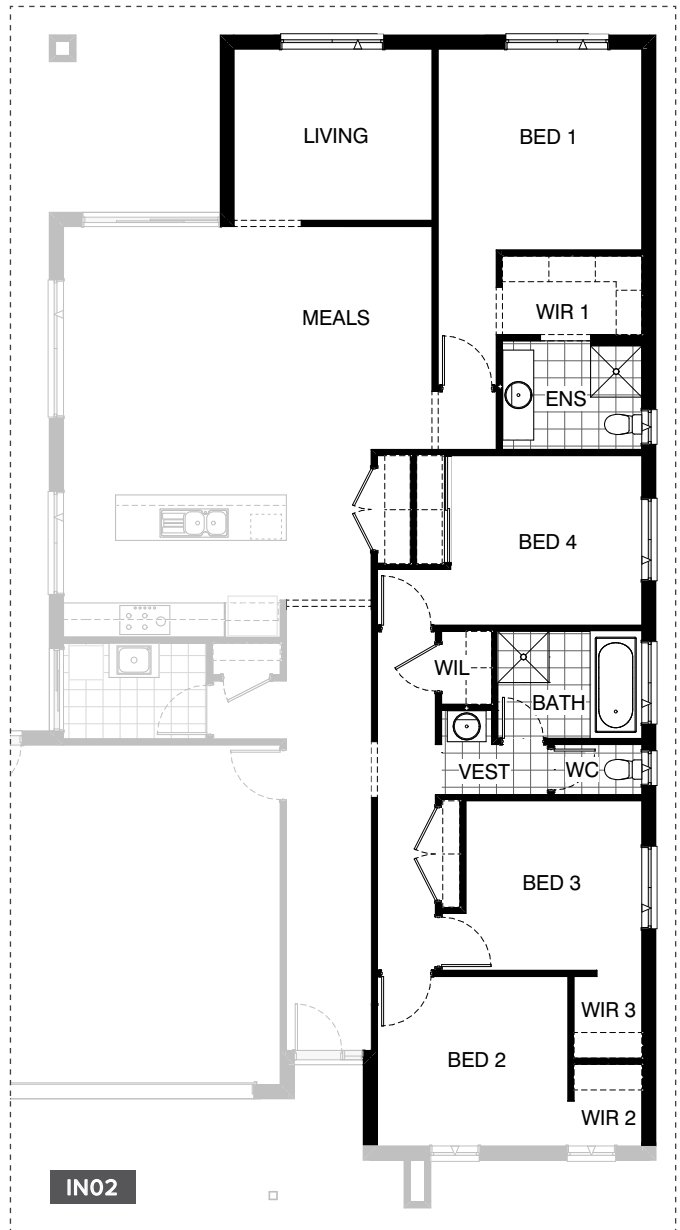
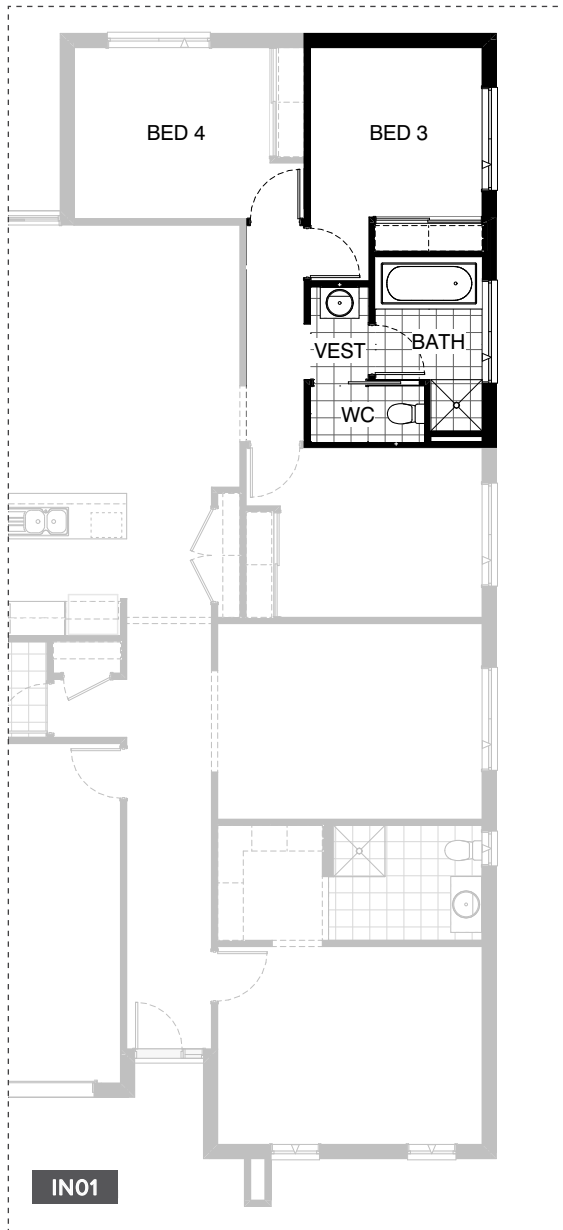
Facades available:

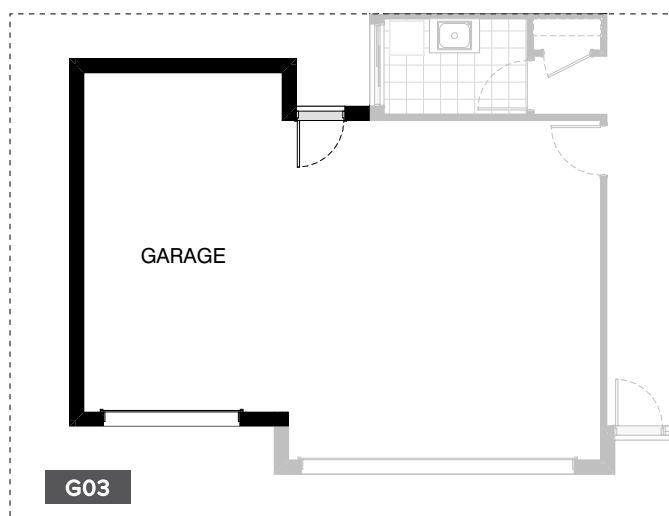
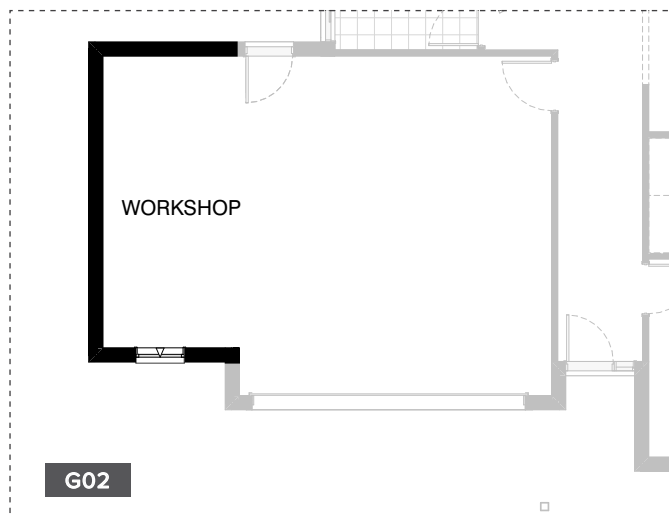
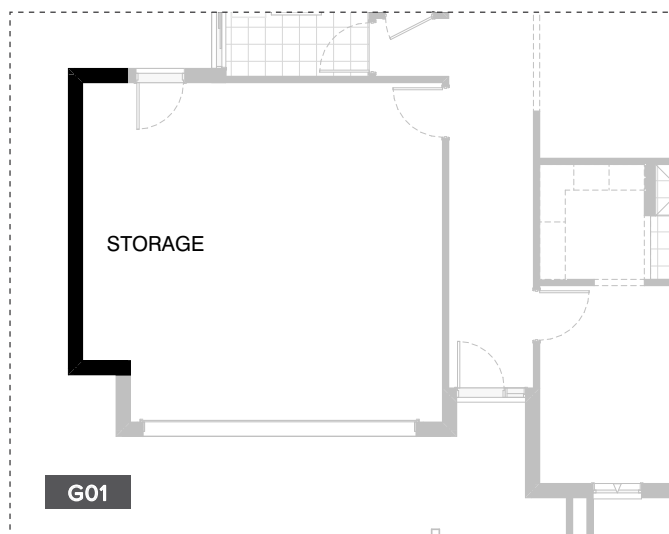
| |
|--|
| Sheffield, Aster, Eastwood, |
| Hartford, Lancaster, Leawood, |
| Newbury, Wiltshire |
| Overall home width 11.15m |
| Overall home length 21.83m |

| | | |
|--------------|---------------------------|---------------|
| Residence | 169.6m ² | 18.3sq |
| Garage | 36.4m ² | 3.9sq |
| Porch | 5.2m ² | 0.6sq |
| Alfresco | 9.4m ² | 1.0sq |
| Total | 220.6m² | 23.7sq |

*Copyright conditions. All photos and illustrations are representative only. Floor plans and specifications may be varied by Burbank without notice, the dimensions are diagrammatic only and a Building Contract with final drawings will display correct dimensions and detail. All designs are the property of Burbank and must not be used, reproduced, copied or varied, wholly or in part without written permission from an authorised Burbank representative. Copyright Burbank Australia (SA) Pty Ltd. ABN 96 165 533 406. BLD 266709.







OPTION DESCRIPTIONS**K01 - Kitchen Option 01**

Provide Kitchen upgrade including:
Removing built in pantry and provide 180mm nib wall to be inline with opening to passage way to provide study / nook
Provide WIP with 300mm deep shelving & 1No. 720mm hinged door
Provide 'L' shaped kitchen with
1No. 450mm drawers unit,
1No. laminated DW provision,
1No. 900mm base cupboard with double sink,
1No. 350mm base cupboard,
1No. open shelf above refrigerator space,
1No. laminated MW provision with pot drawer below,
1No. 900mm corner base cupboard,
2No. 300mm base cupboards,
1No. 900mm under bench oven,
1No. 900mm cooktop with 900mm retractable range hood above,
Additional benchtop and tiled splash back to suit.
1No. 300mm overhead cupboard,
1No. 350mm overhead cupboard,
1No. 600mm corner overhead cupboard,
2No. 600mm overhead cupboards,
Relocate linen to inside Laundry with 450mm deep shelving
Provide 1No. 1800mm x 610mm aluminum awning window in lieu of standard.
Note:
Option not available with Kitchen02.

K02 - Kitchen Option 02

Provide Kitchen upgrade including:
Removing built in Pantry and provide 180mm nib wall to be inline with opening
to passage way to provide study / nook
Provide WTP with 300mm & 450mm deep shelving.
Reconfigure Laundry from standard including relocated Linen within Laundry.
Provide 'L' shaped Kitchen with
1No. 450mm drawers unit,
1No. laminated DW provision,
1No. 900mm base cupboard with double sink,
1No. 350mm base cupboard,
1No. open shelf above refrigerator space,
1No. laminated MW provision with pot drawer below,
1No. 900mm corner base cupboard,
2No. 300mm base cupboards,
1No. 900mm under bench oven,
1No. 900mm cooktop with 900mm retractable rangehood above,
additional benchtop and tiled splash back to suit.
1No. 300mm overhead cupboard,
1No. 350mm overhead cupboard,
1No. 600mm corner overhead cupboard,
2No. 600mm overhead cupboards.
Relocate linen cupboard to inside Laundry with 450mm deep shelving.
Provide 1No. 1800mm x 610mm aluminum awning window in lieu of standard.
Note:
Option not available with Kitchen01.

EN01 - Ensuite Option 01

Provide Ensuite upgrade including:
Removing Ensuite opening in WIR and relocating entrance to Bed 1
1No. 1582mm vanity with double basins in lieu of standard,
900mm x 1200mm tiled shower base in lieu of standard.
Note:
Option not available with Internal02.

EN02 - Ensuite Option 02

Provide Ensuite upgrade including:
Decreasing width of Living by 260mm
Decreasing Bed 1 by 100mm
Increase Ens & WIR by 360mm and provide
1No. 1782mm vanity with double basins in lieu of standard,
900mm x 1800mm tiled shower base in lieu of standard,
1No. 514mm x 1210 aluminium awning window in lieu of standard.
Note:
Option not available with Internal02.

L01 - Laundry Option 01

Provide Laundry upgrade including:
laminated inset trough,
2No. 800mm base cupboards,
2No. 800mm overhead cupboards,
additional benchtop and tiled splash back to suit.
Note:
Option not available with Kitchen02.

IN01 - Internal Option 01

Provide Vestibule option in lieu of standard including
1No. 682mm vanity unit in lieu of standard,
1No. 514mm x 1810mm aluminium awning window to Bath
in lieu of standard,
1No. 920mm wide cavity sliding door to WC in lieu of standard,
Reduce Bed 3 by 230mm and adjust opening for Bed 4.
Note:
Option not available with Internal02.

IN02 - Internal Option 02

Provide floor plan option with Bed 1 to the rear of the home.
Option reduces length of Meals by 690mm
Relocate Living room to rear of home with bulkhead opening
from Family / Meals area. Relocate Bed 1 to rear of home
including alcove off the Meals area.
Provide walk through Robe with 450mm deep shelving
Provide 1No. 1582mm vanity unit in lieu of standard to Ensuite
1No. 1029mm x 610mm aluminium awning window above toilet pan
Relocate Bed 2, 3 & 4 to the front of the home with separate passage way.
Provide WIR to both Bedrooms 2 and 3.
Provide WIL with 450mm deep shelving and linen cupboard with
300mm deep shelving to passage way.
Provide Vestibule in lieu of standard Bathroom and
relocate to front of home with 1No. 682mm vanity unit in lieu of standard.
Note:
Option not available with Internal01, Ensuite01 & Ensuite02.

G01 - Garage Option 01

Provide storage area extension to Garage
Increases area by 4.53m².
Increases width by 840mm.

G02 - Garage Option 02

Provide Workshop to Garage including
1No. 1800mm x 850mm aluminium awning feature window.
Increases area by 13.51m².
Increases width by 2400mm.

G03 - Garage Option 03

Provide triple car Garage including
1No. additional 2140mm x 2410mm
Garage door as per colour selection.
Increases area by 23.62m².
Increases width by 3600mm.