

Facades available:

Coventry, Avondale, Halifax,

Northampton, Seacliff, Westerley,

Weston, Windermere

Overall home width 13.31m

Overall home length 13.07m

| | | |
|--------------|---------------------------|---------------|
| Residence | 276.8m ² | 29.8sq |
| Garage | 36.0m ² | 3.9sq |
| Porch | 5.8m ² | 0.6sq |
| Total | 318.6m² | 34.3sq |

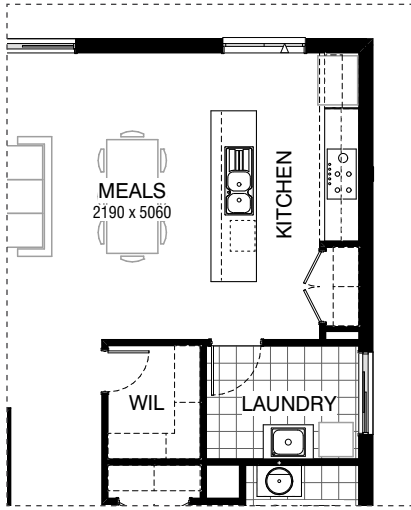
FLOORPLAN OPTIONS

We personalise our floorplans.

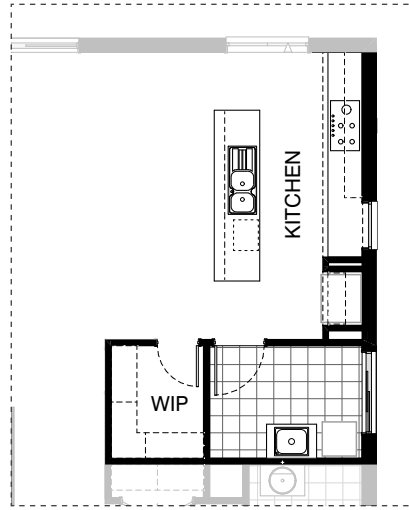
Talk to us about our huge range of ready-to-go design options or simply visit www.burbank.com.au/south-australia for more details.

Listed details based on Coventry facade floorplan (illustrated)

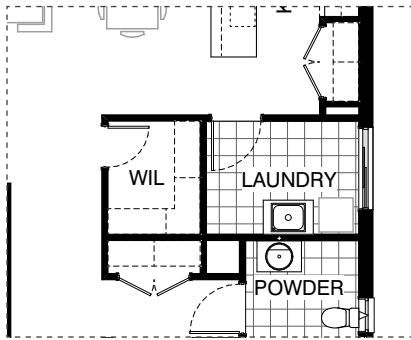
*Copyright conditions. All photos and illustrations are representative only. Floor plans and specifications may be varied by Burbank without notice, the dimensions are diagrammatic only and a Building Contract with final drawings will display correct dimensions and detail. All designs are the property of Burbank and must not be used, reproduced, copied or varied, wholly or in part without written permission from an authorised Burbank representative. Copyright Burbank Australia (SA) Pty Ltd. ABN 96 165 533 406. BLD 266709.



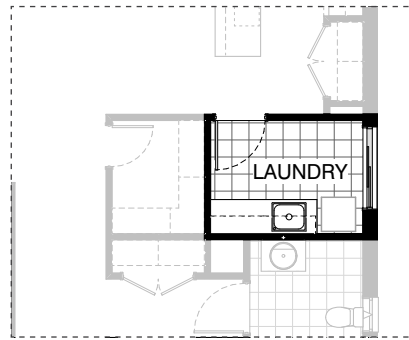
Master Kitchen Design



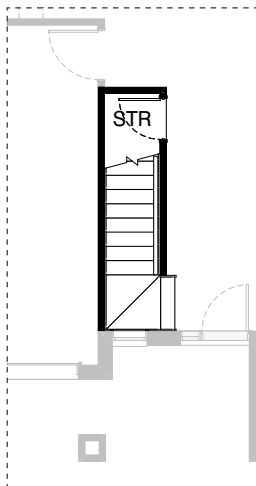
K01



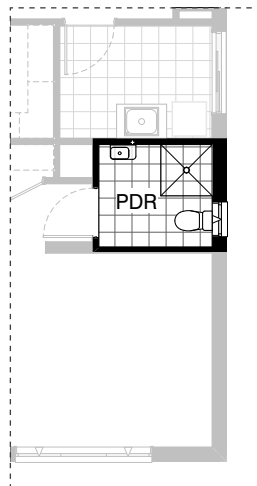
Master Laundry Design



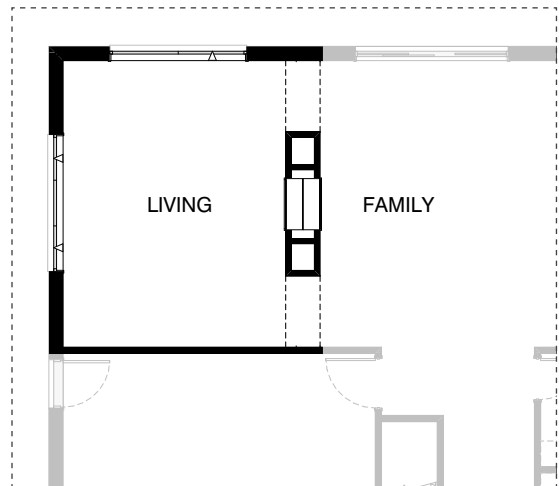
LD01



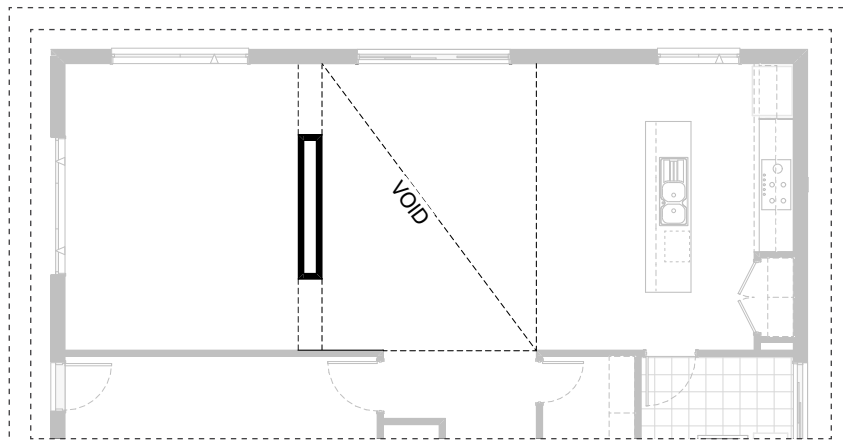
IN01



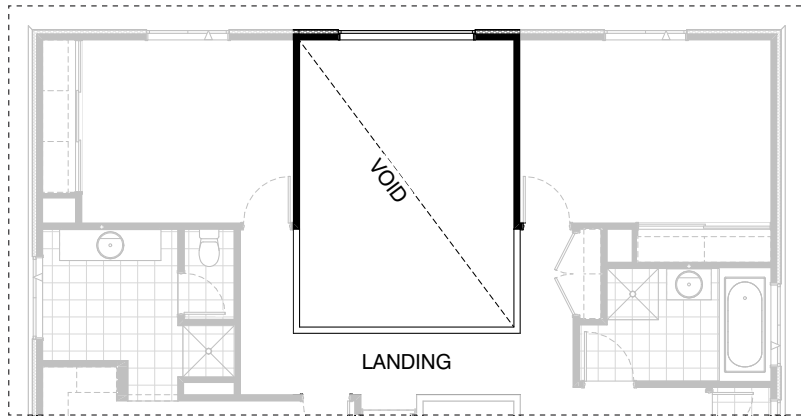
IN02



IN03

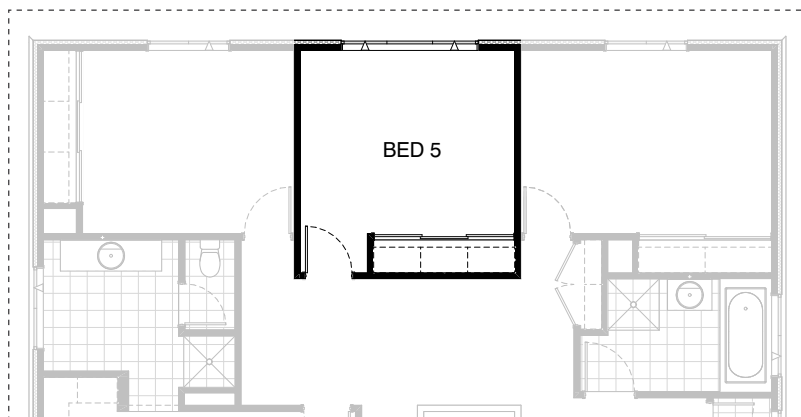


GROUND FLOOR

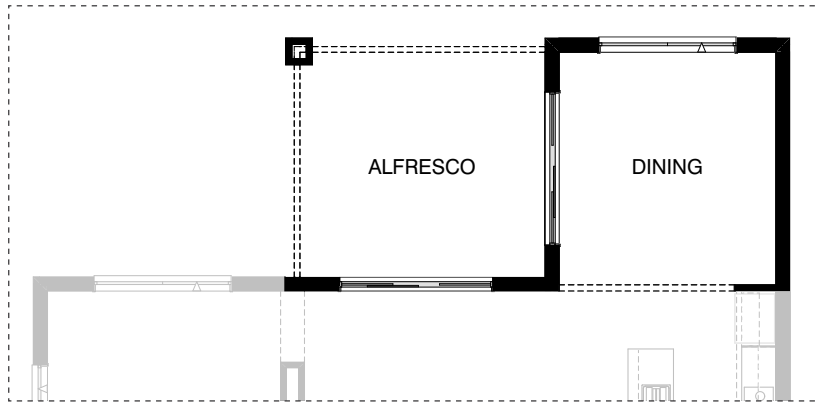


FIRST FLOOR

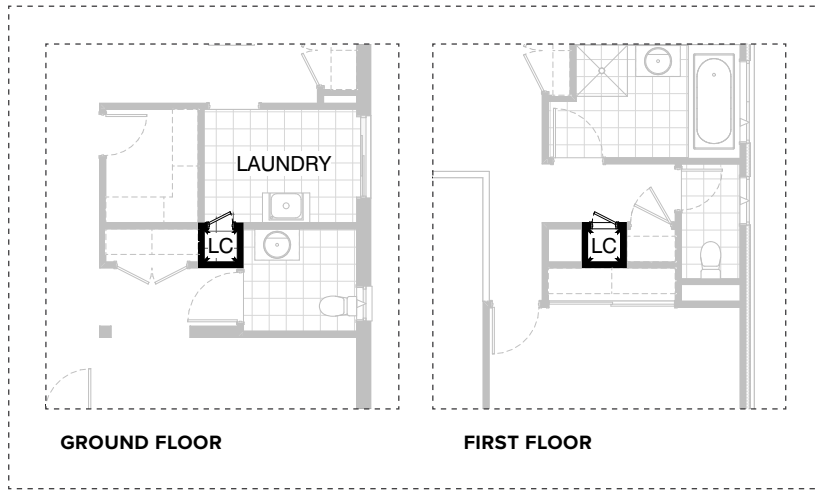
IN04



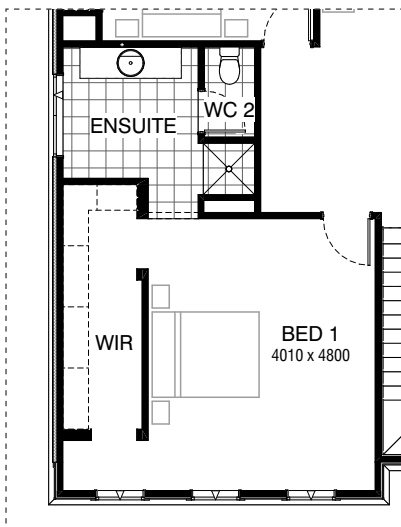
IN05



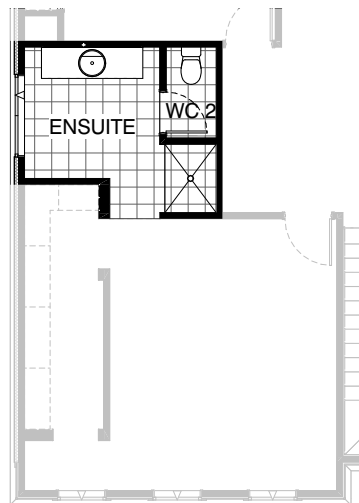
IN06



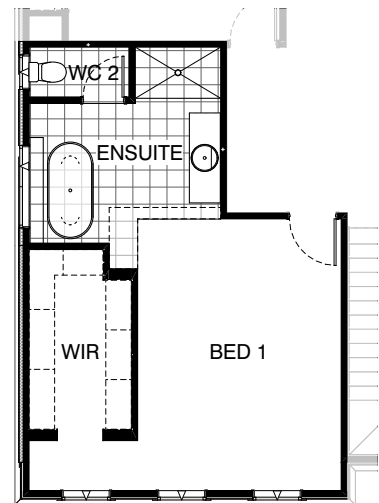
IN07



Master Kitchen Design

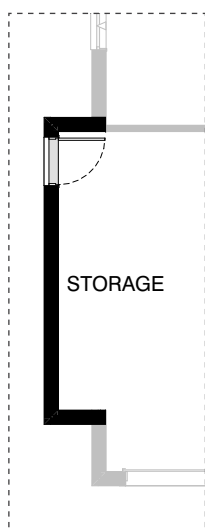
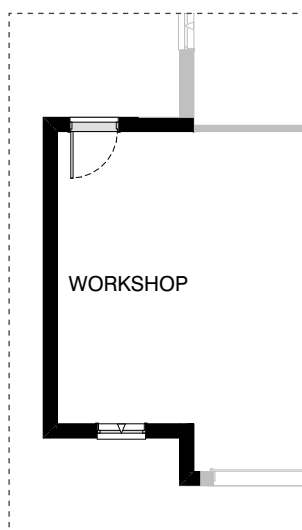
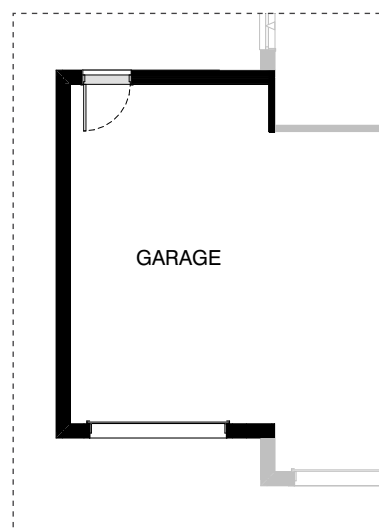


EN01



EN02

*Copyright conditions. All photos and illustrations are representative only. Floor plans and specifications may be varied by Burbank without notice, the dimensions are diagrammatic only and a Building Contract with final drawings will display correct dimensions and detail. All designs are the property of Burbank and must not be used, reproduced, copied or varied, wholly or in part without written permission from an authorised Burbank representative. Copyright Burbank Australia (SA) Pty Ltd. ABN 96 165 533 406. BLD 266709.

**G01****G02****G03**

OPTION DESCRIPTIONS**Option Kitchen01**

Provide alternative Kitchen layout including;
1No. 800mm base cupboard,
1No. 900mm base cupboard,
3No. 600mm base cupboards,
2No. 800mm overhead cupboards,
1No. laminated open shelf above refrigerator space,
1No. 300mm base cupboard,
1No. laminated dishwasher provision,
1No. laminated Microwave provision with pot drawer below, 1No. 450mm drawers,
Plaster lined bulkhead over,
tiled splash back and benchtop to suit,
1No. 1200mm x 850mm aluminium fixed window with no bottom reveal in lieu of standard with plaster reveal
Note:
Walk in linen converted to walk in pantry and 720mm door and shelving relocated to suit

Option Laundry01

Provide Laundry upgrade including; 2No. 900mm base cupboards,
2No. 900mm overhead cupboards, with additional tiled splashback and benchtop to suit.

Option Internal01

Create Store room beneath staircase including; 1No. 720mm flush panel hinged door and additional light point.

Option Internal02

Provide Powder room upgrade including; 1No. 900mm x 900mm tiled shower base and wall hung basin in lieu of standard.

Option Internal03

Provide 2-way fire place with capped gas point to Living / Family room.

Option Internal04 GF

Provide void area in lieu of standard Rumpus room above Family room including additional plaster dwarf wall balustrade.

--

Provide void area in lieu of standard Rumpus room above Family room including additional plaster dwarf wall balustrade including;
1No. 1029mm x 2410mm aluminium fixed window in lieu of standard

Option Internal05

Provide 5th Bedroom option including Additional plaster lined stud wall,
1No. 820mm wide flush panel hinged door, Site built plaster lined robe with
1No. 450mm shelf, hanging rail & sliding doors in lieu of standard Rumpus room.

Option Internal06

Provide Dining and Alfresco addition to rear of dwelling including; structural earth floor to Alfresco,
1No. 470mm x 470mm brick pier,
flat metal roof above with parapet and
lightweight rendered cladding to Alfresco,
1No. 300mm deep bulkhead to Dining,
1No. 1800mm x 2410mm aluminium awning window to Dining, 1No. 2095m x 2690mm aluminium sliding door to Dining, Increases length by 4200mm, Increases area by 37.25m².

Option Internal07

Provide Laundry Chute to Laundry including; 1No. 420mm wide flush panel hinged door.

Option Internal08

Provide Guest Bedroom Option including: additional plaster lined stud wall,
1No. 870mm wide flush panel hinged door, site built plaster lined robe,
1No. 450mm shelf and hanging rail & sliding doors in lieu of standard Study.

Option External01

Provide Alfresco to rear of dwelling including: additional earth floor,
flat metal roof above,
2No. 470mm x 470mm brick piers to rear of Family/Meals room.
lightweight rendered cladding to Alfresco, Increases length by 4440mm.
Increases area by 19.67m².

Option Ensuite01

Provide Ensuite upgrade including; 1No. 1200mm x 900mm wall-to-wall tiled shower base in lieu of standard. Increase Ensuite WC to suit.

Note:

Ensuite void to be removed

Option Ensuite02

Provide alternative Ensuite & walk in robe layout including;
1No. 1500mm x 900mm wall-to-wall tiled shower base,
1No. 1582mm wide vanity unit,
1No. 1700mm free standing bath with 900mm high tiled dwarf wall, Enclosed WC with 1No. 1200mm x 610mm aluminium awning window, Decrease Bed 1 width by 410mm to 4800mm x 3600mm in lieu of 4800mm x 4010mm,
Provide additional hanging rail/shelving to WIR including bulkhead corner to Ensuite to suit.

Note:

Existing Ensuite window to be relocated to suit.

Option Garage01

Provide extension to Garage to create additional Storage area. Increases width by 840mm, Increases area by 4.54m².

Option Garage02

Provide extension to Garage to create Workshop area including;
1No. 1800mm x 850mm aluminium awning feature window,
Increases width by 2400mm. Increases area by 13.54m².

Note:

Garage external access door relocated to rear of workshop

Option Garage03

Provide triple car Garage including; 1No. 2140mm x 2410mm approx. garage door as per colour selection. Increases width by 3600mm. Increases area by 23.22m².

Note:

Garage external access door relocated to rear of garage.