



**FLOORPLAN OPTIONS**

We personalise our floorplans. Talk to us about our huge range of ready-to-go design options or simply visit [www.burbank.com.au/south-australia](http://www.burbank.com.au/south-australia) for more details.

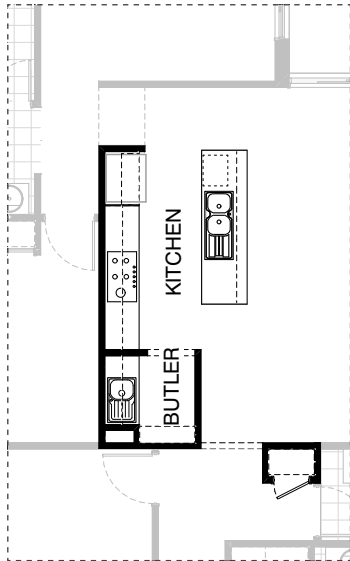
Listed details based on Sheffield facade floorplan (illustrated)

**Facades available:**

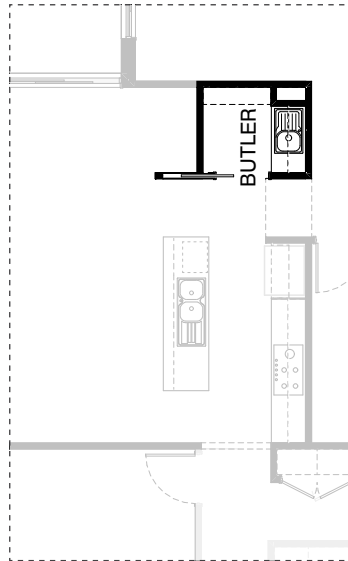
Sheffield, Aster, Eastwood,
Hartford, Lancaster, Leawood,
Newbury, Wiltshire
<b>Overall home width</b> <b>11.03m</b>
<b>Overall home length</b> <b>21.59m</b>

Residence	145.0m <sup>2</sup>	15.6sq
Garage	36.3m <sup>2</sup>	3.9sq
Alfresco	8.8m <sup>2</sup>	0.9sq
Porch	5.1m <sup>2</sup>	0.5sq
<b>Total</b>	<b>195.2m<sup>2</sup></b>	<b>21.0sq</b>

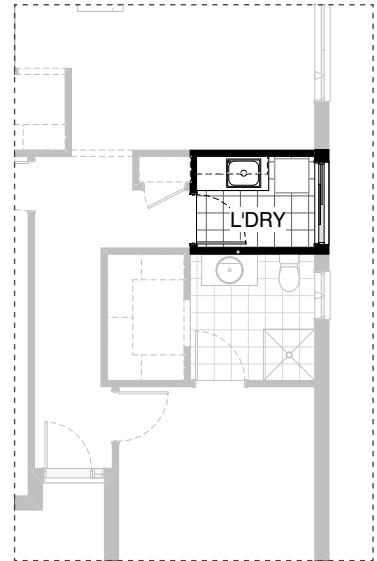
\*Copyright conditions. All photos and illustrations are representative only. Floor plans and specifications may be varied by Burbank without notice, the dimensions are diagrammatic only and a Building Contract with final drawings will display correct dimensions and detail. All designs are the property of Burbank and must not be used, reproduced, copied or varied, wholly or in part without written permission from an authorised Burbank representative. Copyright Burbank Australia (SA) Pty Ltd. ABN 96 165 533 406. BLD 266709.



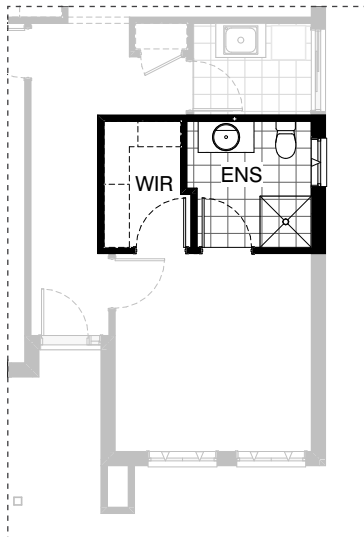
K01



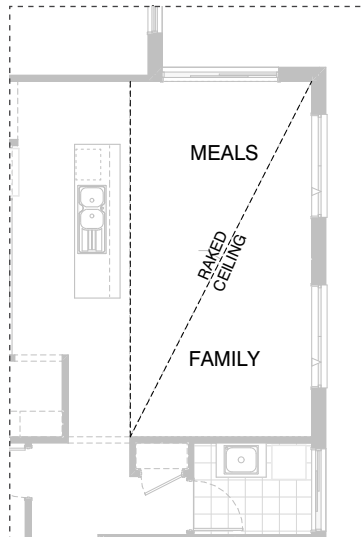
K02



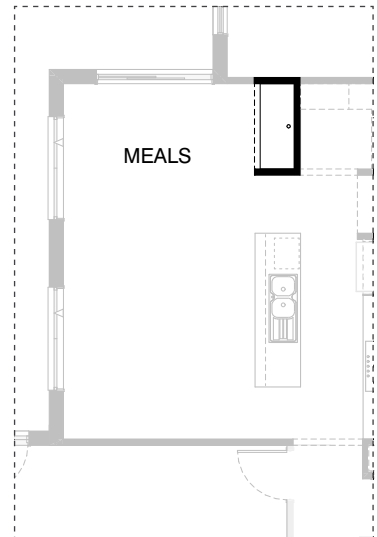
L01



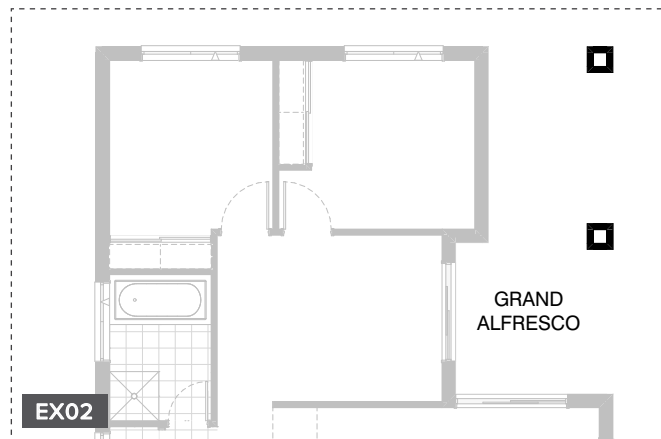
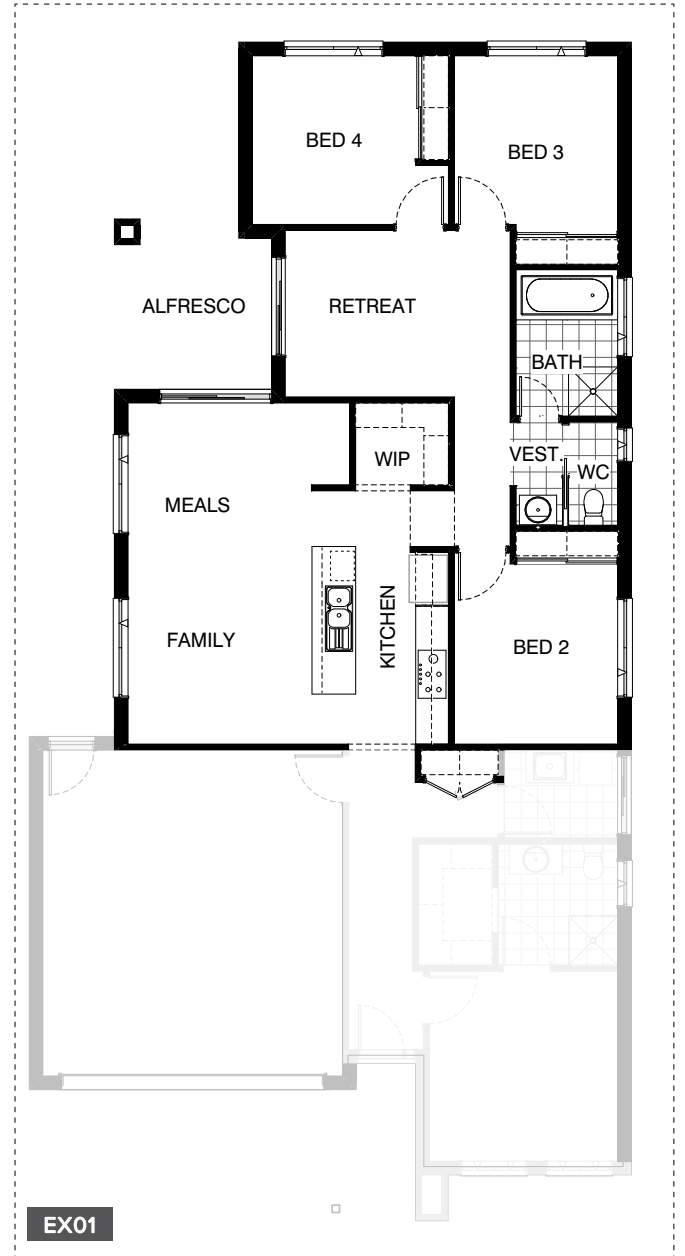
EN01



IN01



IN02



**OPTION DESCRIPTIONS****K01 - Kitchen Option 01**

Provide Butler's Pantry option with,  
1No. 450mm drawer unit,  
1No. Dishwasher provision,  
1No. Microwave provision with pot drawer,  
1No. 900mm base cupboard with double bowl sink to kitchen island.  
2No. 800mm Base cabinets,  
2No. 800mm overhead cupboards,  
1No. 900mm underbench oven with 900mm cooktop & 900mm retractable rangehood  
1No. 800mm base cabinet with single bowl sink,  
1No. 350mm base cabinet,  
1No. 800mm overhead cupboard,  
1No. 350mm overhead cupboard.  
Provide additional tiled splashback to butlers pantry to suit & 4No. 300mm shelves.  
Increasing length of Butlers pantry by 200mm and reducing kitchen space by 200mm.  
Increase width of Butlers pantry by 100mm and reducing Linen Cupboard by 100mm.

**K02 - Kitchen Option 02**

Provide Butler's Pantry in conjunction with option External01.  
New Butler's Pantry includes additional benchtop,  
800mm base cupboard with single bowl sink,  
300mm base cupboard,  
800mm overhead cupboard,  
300mm overhead cupboard,  
4No. 300mm shelves,  
920mm cavity sliding door, additional tiled splashback to suit.

**L01 - Laundry Option 01**

Provide Laundry upgrade with laminate base cupboards and stainless steel inset trough including  
1No. 800mm base cupboard,  
1No. 400mm base cupboard,  
1No. 800mm overhead cupboard,  
1No. 400mm overhead cupboard & additional benchtop and tiled splashback to suit.

**EN01 - Ensuite Option 01**

Provide Ensuite option with 720mm hinged door access from Bed 1 directly to Walk-in Robe.

**IN01 - Internal Option 01**

Provide raked ceiling option to Meals, Family with bulkhead and standard ceiling height over Kitchen & WIP.

**IN02 - Internal Option 02**

Provide desk option to Nook with  
1No. 450mm drawer units below desk and laminated benchtop.  
Note:  
This option can only be used if External01 has been chosen.

**IN03 - Internal Option 03**

Provide floor plan option with Bed 1 to rear of the home.  
Option reduces Bed 2 length by 320mm,  
Remove Retreat and relocated Bed 4 to front of home with Study & remove alcove to Porch. Flip WC / Vest & Bathroom.  
Provide 1200mm x 1810mm aluminium awning window to Bed 3,  
Remove 2095mm x 1810mm aluminium sliding door and provide robe with sliding doors and 450mm deep shelf to Bed 1.

**EX01 - External Option 01**

Provide mirrored rear section of the home.  
Relocate WIP & Nook to opposite side of kitchen & increase width of linen cupboard by 510mm.

**EX02 - External Option 02**

Provide Grand Alfresco option with additional light point & tiled roof above.  
1No. additional 470mm x 470mm brick pier and earth floor to Alfresco.  
Option adds 7.39m<sup>2</sup> to the overall house area,  
Adds 3240mm of length to the building footprint