



<b>Facades available:</b>	
Coastal, Delta, Kingston, Nouveau	
Scarborough, Traditional, York	
<b>Overall home width</b>	<b>14.99m</b>
<b>Overall home length</b>	<b>23.63m</b>

Residence	243.9m <sup>2</sup>	26.3sq
Garage	38.2m <sup>2</sup>	4.1sq
Porch	6.7m <sup>2</sup>	0.7sq
Alfresco	22.5m <sup>2</sup>	2.4sq
<b>Total</b>	<b>311.2m<sup>2</sup></b>	<b>33.5sq</b>

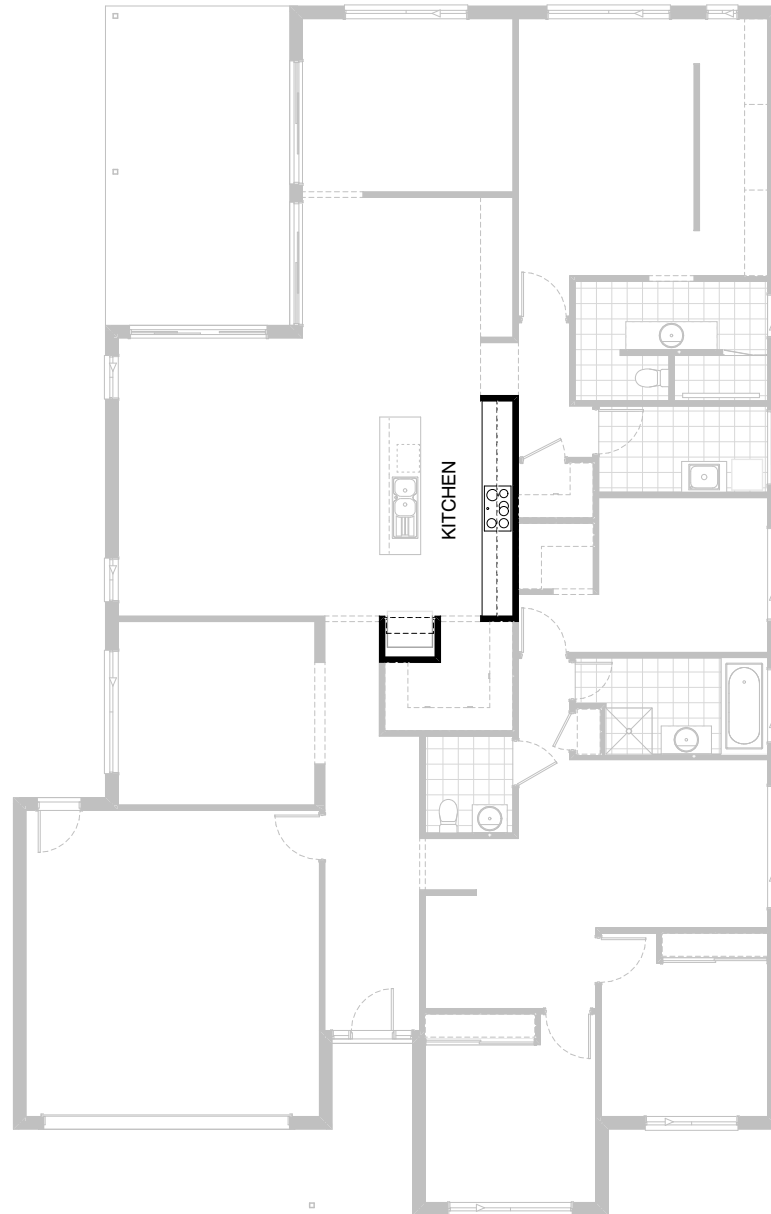
**FLOORPLAN OPTIONS**

We personalise our floorplans. Talk to us about our huge range of ready-to-go design options.

Listed details based on Traditional facade floorplan (illustrated)

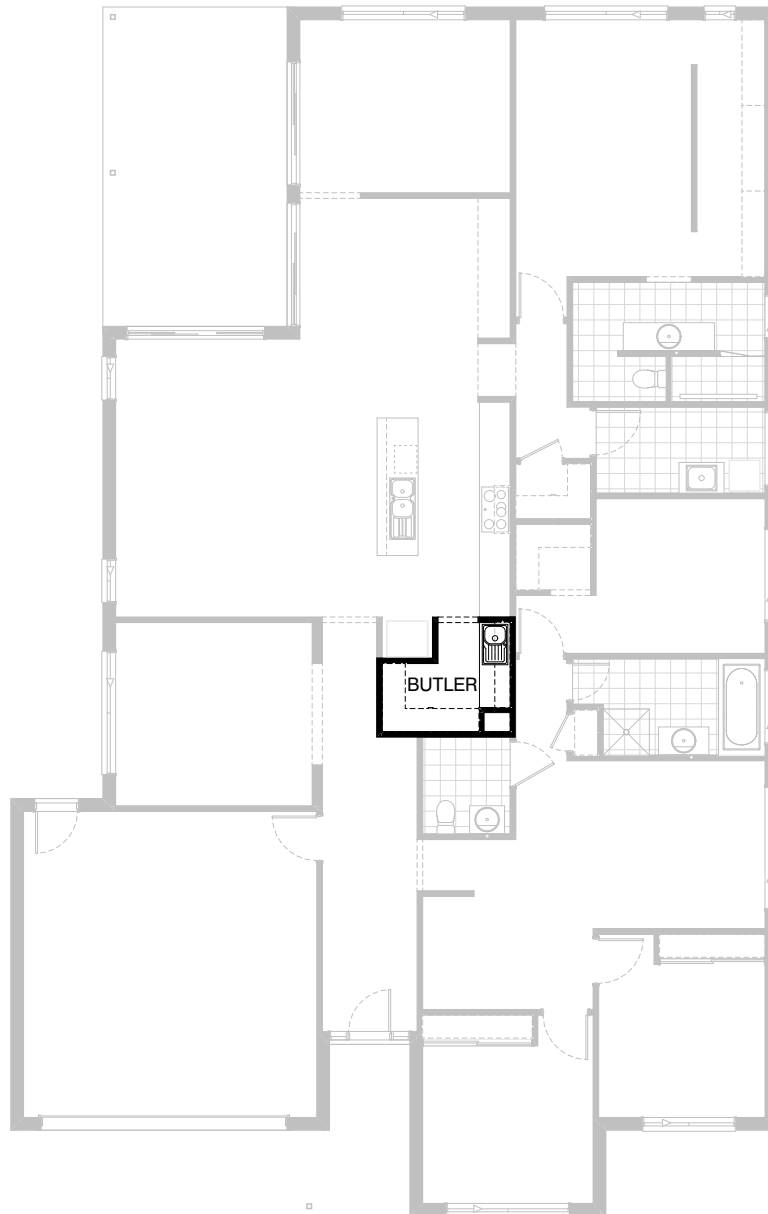
\*Copyright conditions. All photos and illustrations are representative only. Floor plans and specifications may be varied by Burbank without notice, the dimensions are diagrammatic only and a Building Contract with final drawings will display correct dimensions and detail. All designs are the property of Burbank and must not be used, reproduced, copied or varied, wholly or in part without written permission from an authorised Burbank representative. Copyright Burbank Australia (QLD) Pty Ltd. ABN 77 103 014 615. QBCC 1046544.

**Call 13 BURBANK**  
**Visit [burbank.com.au](http://burbank.com.au)**



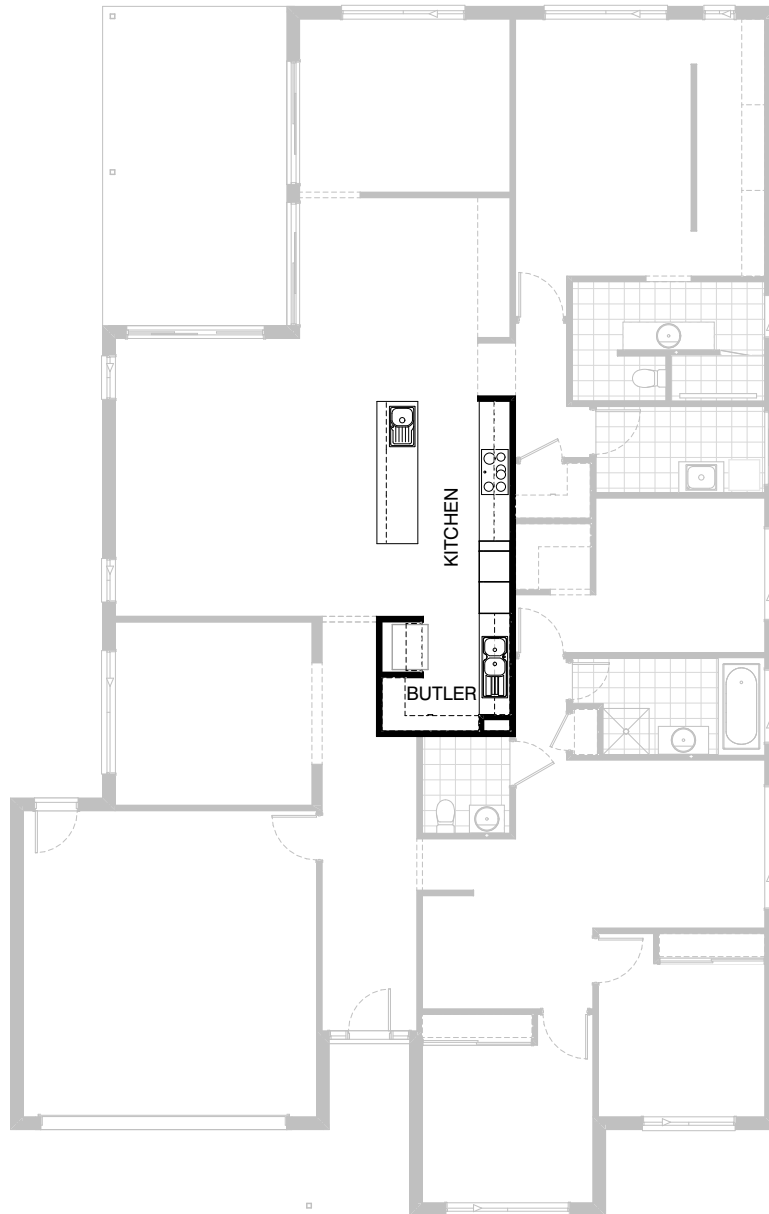
### Option Kitchen01

Provide Kitchen upgrade option, including:  
1No. 920mm open shelf over Ref. space,  
4No. 800mm overhead cupboards.



### Option Kitchen02

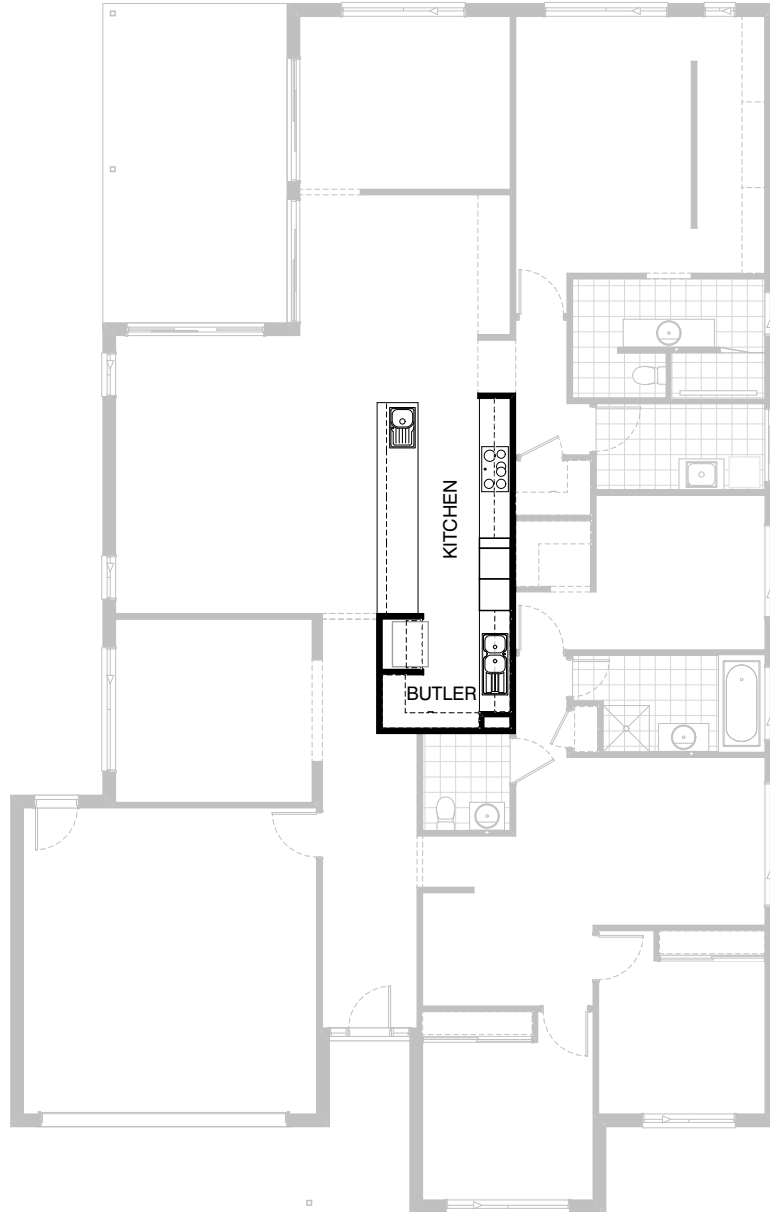
Provide Kitchen upgrade option with Butler's Pantry in lieu of WIP, including:  
additional laminate benchtop,  
2No. 800mm base cupboards,  
2No. 300mm deep 60mm thick open shelves,  
over Butler's sink.  
Provide plaster-lined void and remove  
1No. 450mm shelving.



### Option Kitchen03

Provide Kitchen upgrade option with Butler's Pantry in lieu of WIP, including: additional benchtop and tiled splashback, relocated Ref. space with 920mm laminate open shelf,  
1No. 900mm retractable rangehood,  
1No. 900mm cooktop,  
1No. dishwasher provision,  
1No. 450mm drawer unit,  
6No. 900mm base cupboards,  
1No. 450mm base cupboard,

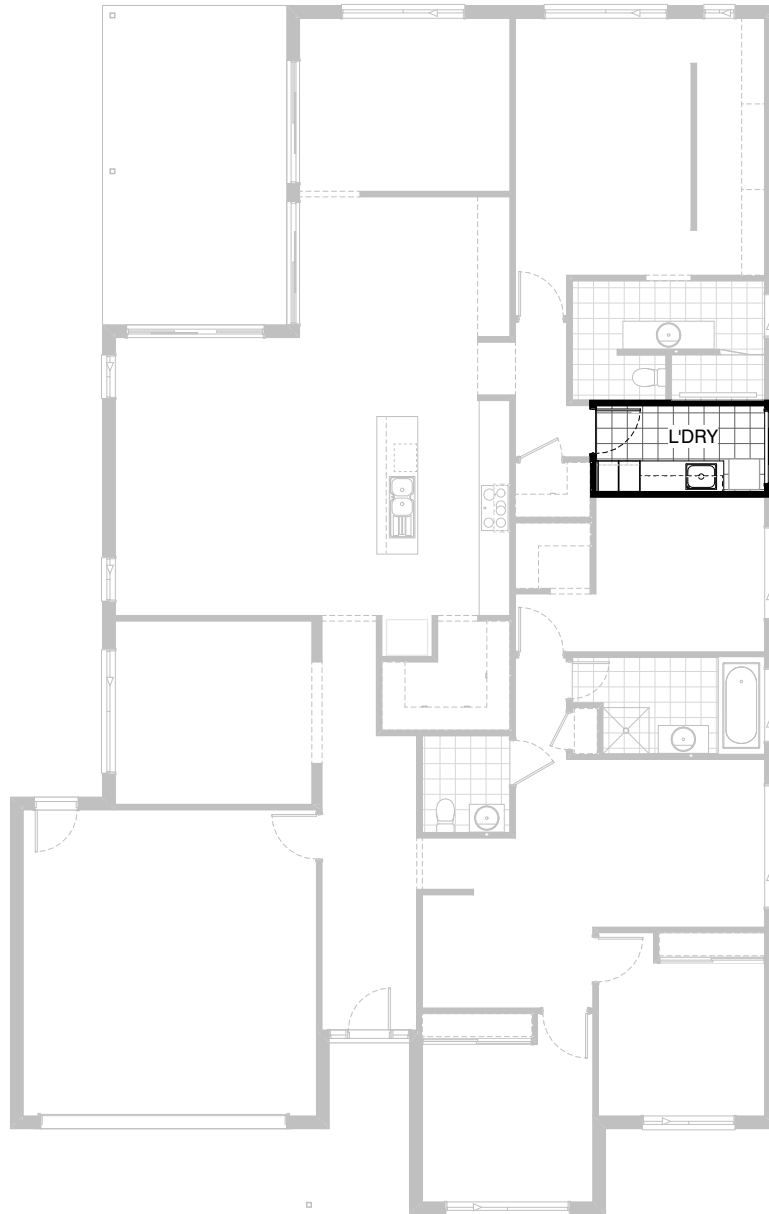
1No. 400mm base cupboard,  
2No. 900mm overhead cupboards,  
2No. 600mm laminate oven towers with microwave provisions,  
1No. 180mm laminate wine rack,  
1No. double bowl sink to Butler's Pantry,  
1No. single bowl sink to Kitchen island bench,  
1No. 450mm shelving to Butler's Pantry,  
1No. 300mm shelving to Butler's Pantry,  
2No. 300mm deep 60mm thick open shelving over Butler's sink.



### Option Kitchen04

Provide Galley-style Kitchen upgrade option with Butler's Pantry in lieu of WIP, including:  
additional benchtop and tiled splashback, relocated Ref. space with 920mm laminate open shelf,  
1No. 900mm retractable rangehood,  
1No. 900mm cooktop,  
1No. dishwasher provision,  
1No. 450mm drawer unit,  
8No. 900mm base cupboards,

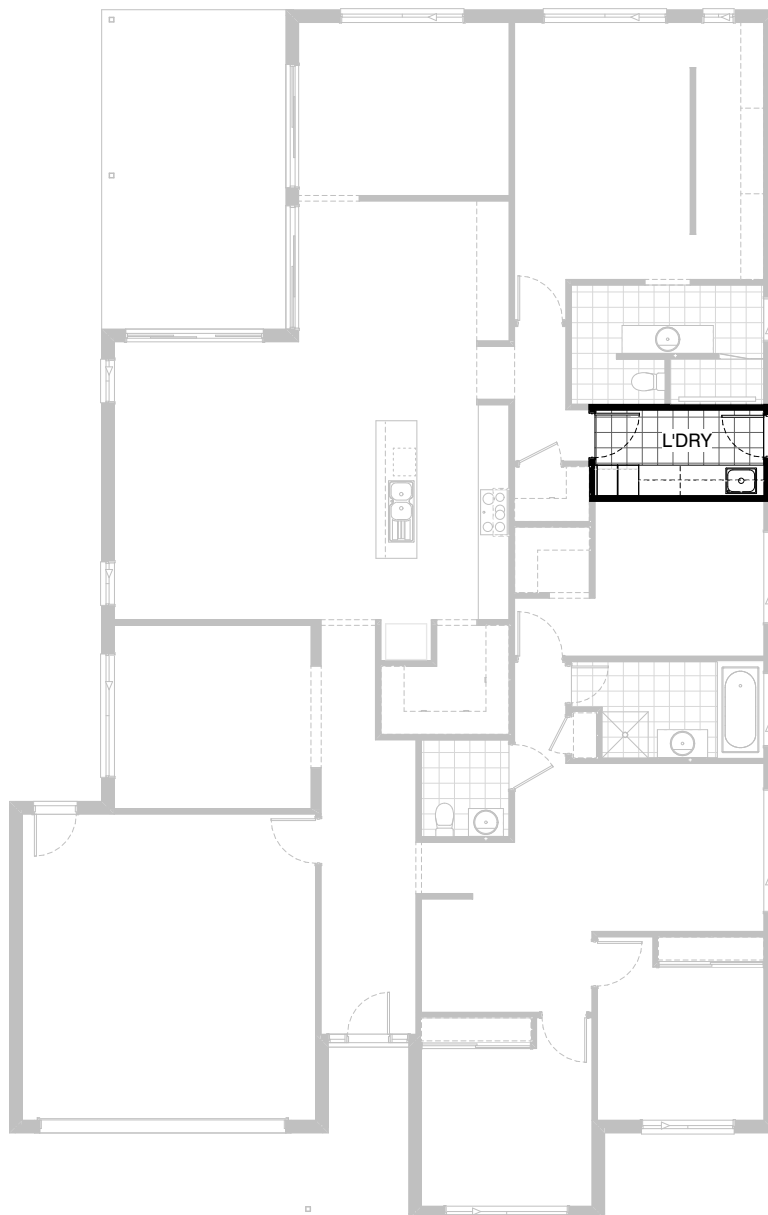
1No. 400mm base cupboard,  
2No. 900mm overhead cupboards,  
2No. 600mm laminate oven towers with microwave provisions,  
1No. 180mm laminate wine rack,  
1No. double bowl sink to Butler's Pantry,  
1No. single bowl sink to Kitchen island bench,  
1No. 450mm shelving to Butler's Pantry,  
1No. 300mm shelving to Butler's Pantry,  
2No. 300mm deep 60mm thick open shelving over Butler's sink.



### Option Laundry01

Provide Laundry upgrade option with laminate base and overhead cupboards and stainless steel inset trough, including:  
 2No. 800mm base cupboards,  
 2No. 800mm overhead cupboards,  
 1No. 400mm laminate linen unit,  
 1No. 400mm laminate broom unit,  
 additional benchtop and tiled splashback to suit.

Note:  
 Option not available with Internal10 & External02.



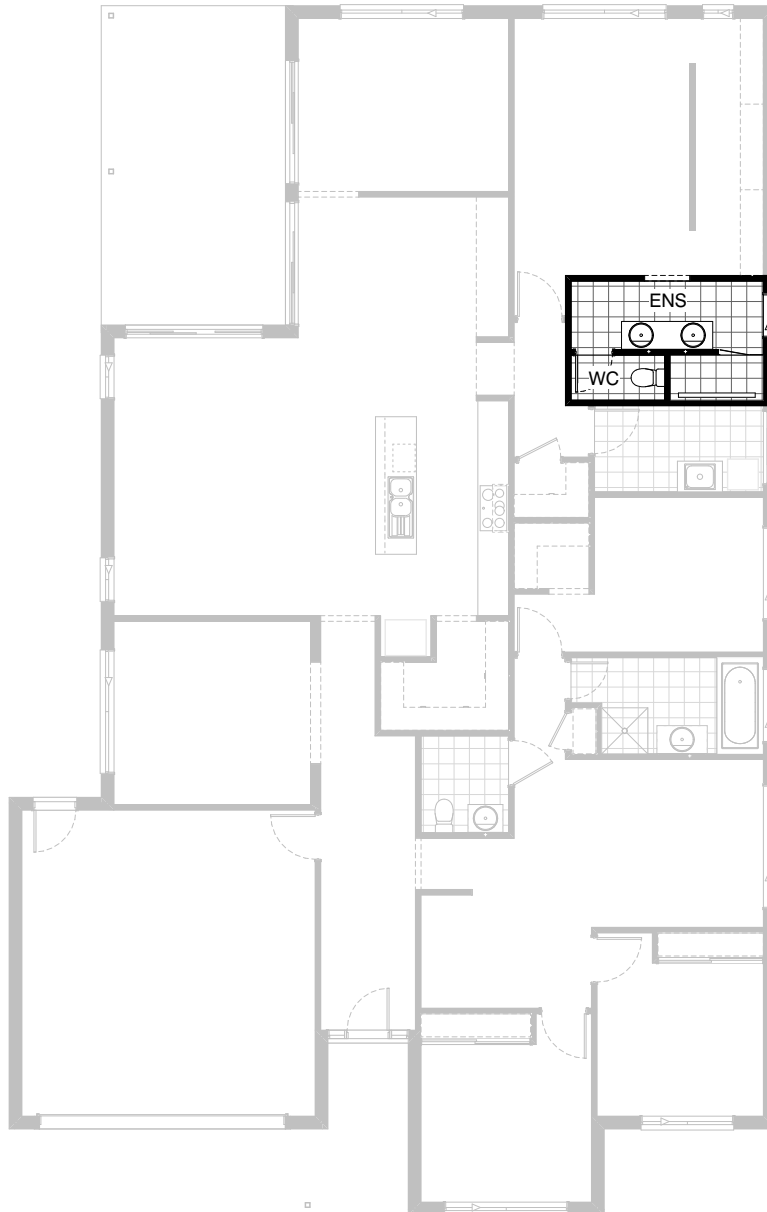
### Option Laundry02

Provide Laundry upgrade option with laminate base and overhead cupboards and stainless steel inset trough, including:

- 1No. 800mm base cupboard,
- 3No. 800mm overhead cupboards,
- 1No. 400mm laminate linen unit,
- 1No. 400mm laminate broom unit,

additional benchtop and tiled splashback to suit.  
Provide 2105mm x 850mm hinged access door in lieu of standard 2110mm x 1450mm aluminium sliding door.  
Option also provides open space under bench for washer and dryer side-by-side and raises the bench height to 950mm from FFL (kicker height raises).

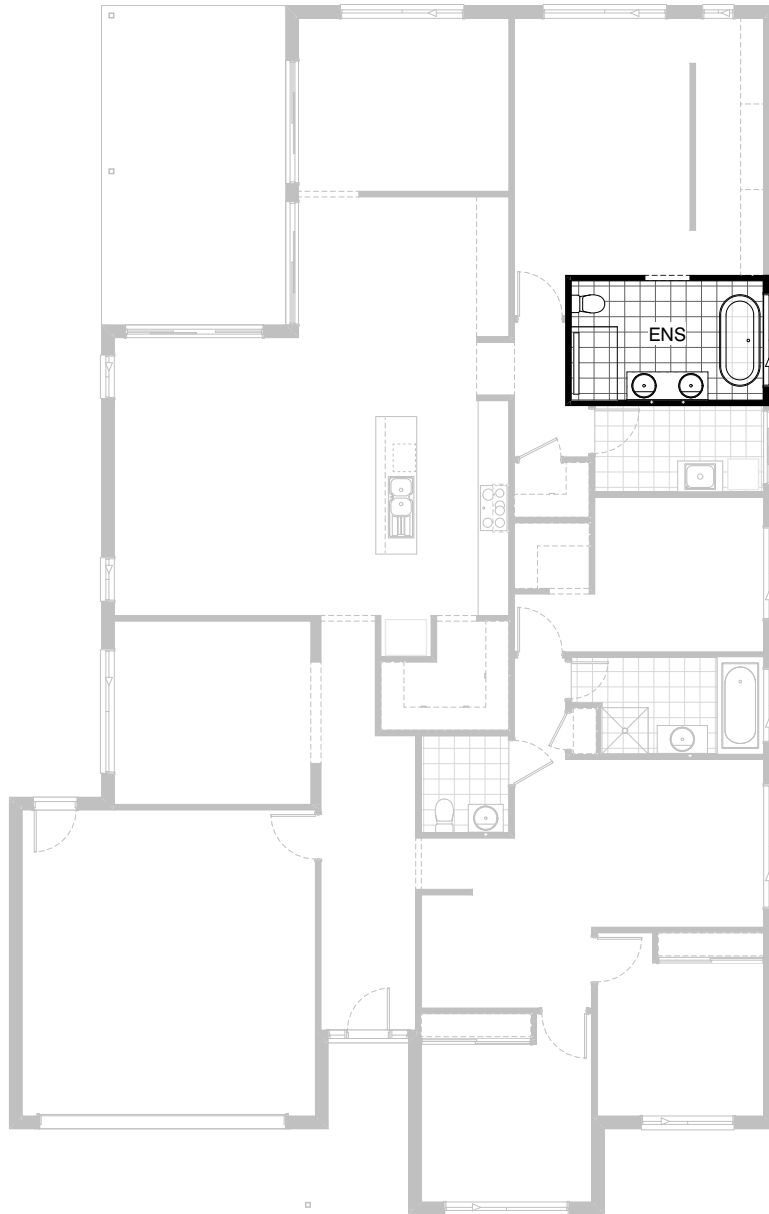
Note:  
Option not available with Internal10 & External02.



### Option Ensuite01

Provide Ensuite upgrade option, including:  
1782mm vanity with double basins,  
enclosed WC with 720mm hinged door.





## Option Ensuite02

Provide Ensuite upgrade option with rearranged layout, including:  
1780mm freestanding bath,  
1582mm vanity with double basins,  
1430mm x 900mm tiled shower base with grate drain,  
relocated toilet pan.  
Provide 1200mm x 1810mm aluminium sliding window in lieu of standard.

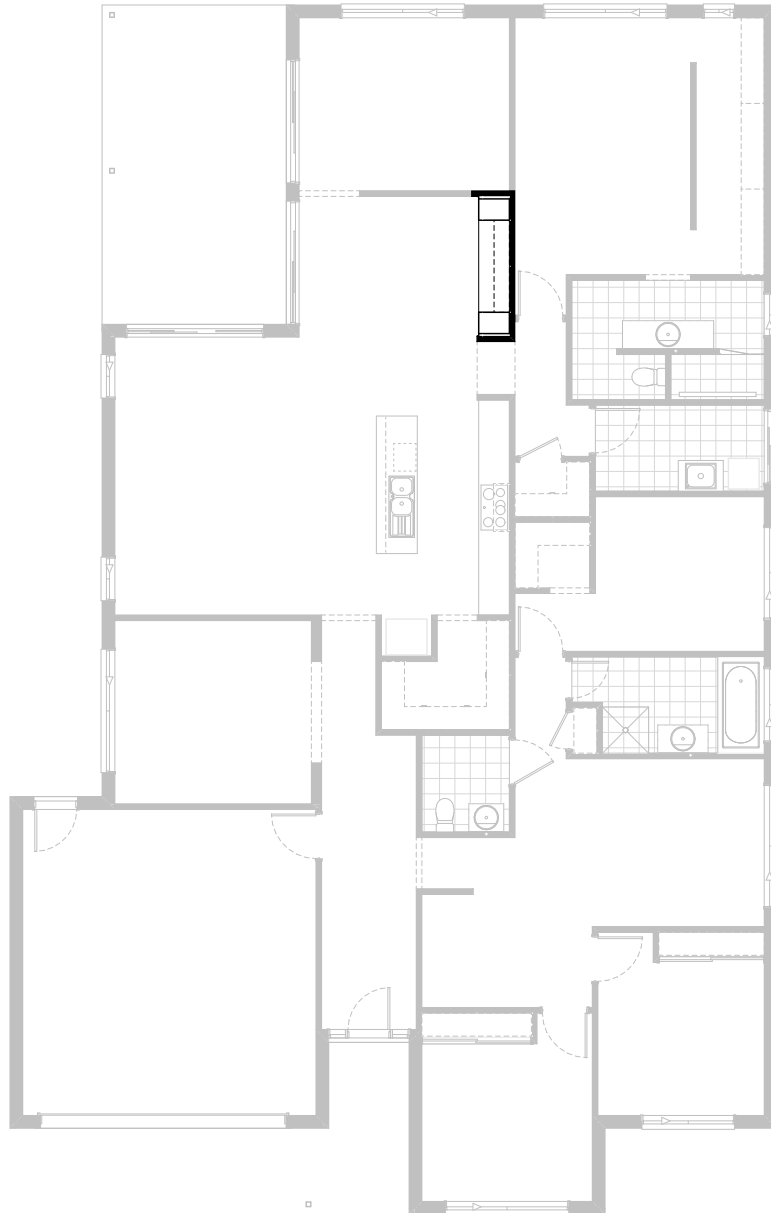
Note:  
Option not available with Internal10 & External02.



### Option Ensuite03

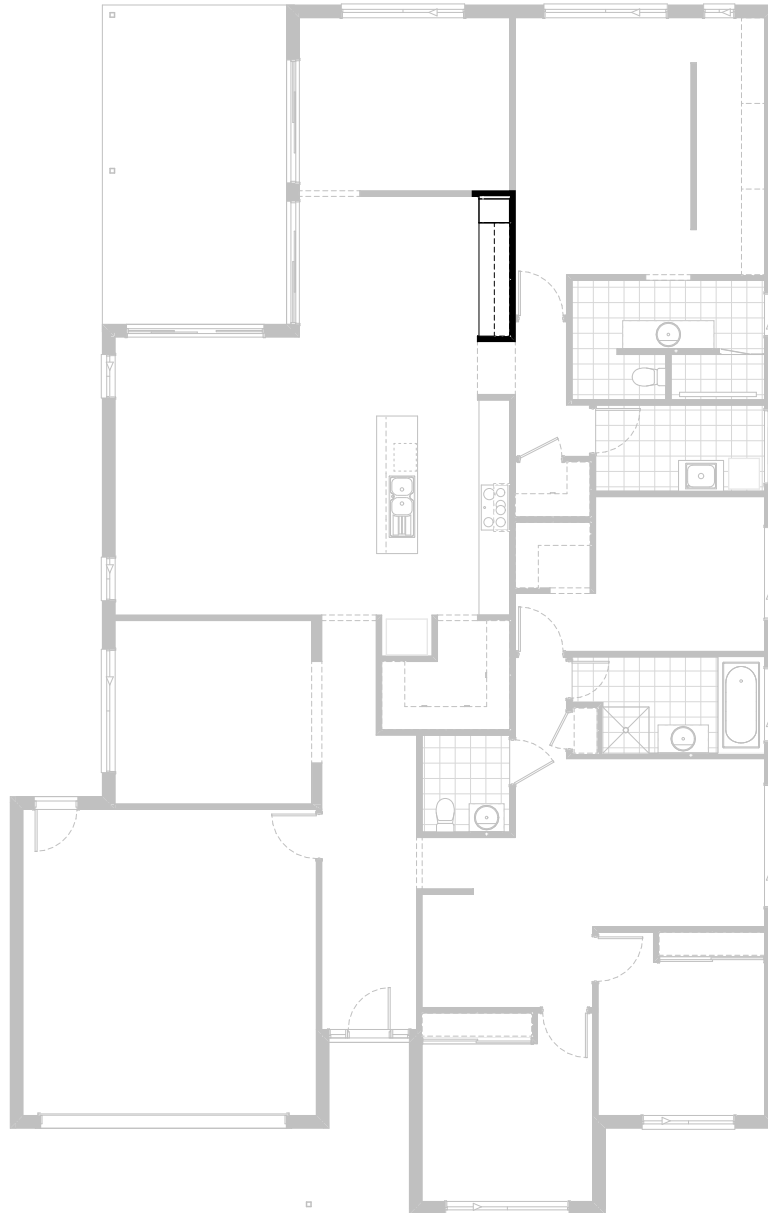
Provide Ensuite upgrade option with rearranged layout, including:  
 1780mm freestanding bath,  
 1582mm vanity with double basins,  
 1440mm x 900mm tiled shower base with grate drain,  
 enclosed WC with 720mm hinged door,  
 Provide 1200mm x 1810mm aluminium sliding window in lieu of standard.  
 Option takes 100mm from Bed 1 to accommodate.

Note:  
 Option not available with Internal10 & External02.



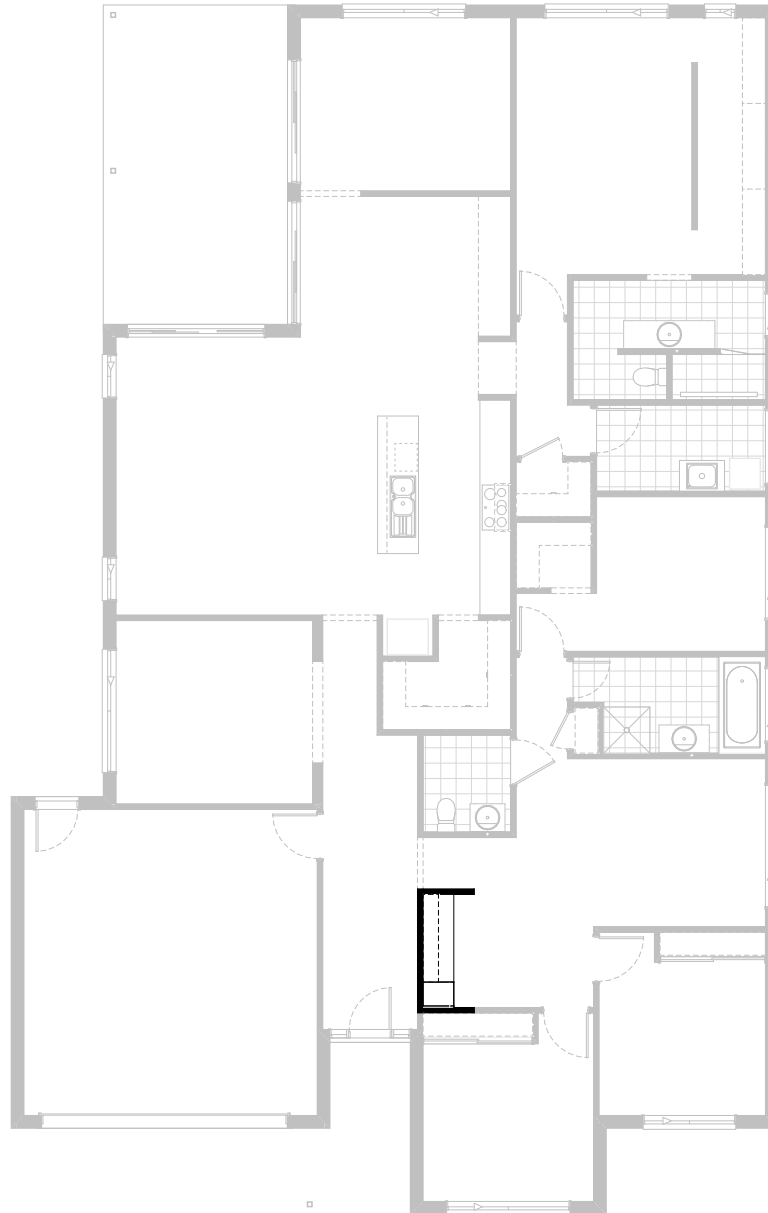
**Option Internal01**

Provide built-in joinery option to Nook near Meals area, including:  
600mm deep 32mm thick laminate benchtop,  
2No. 900mm base cupboards with drawers,  
2No. 400mm laminate linen unit,  
2No. 300mm deep 60mm thick open shelves.  
Remove bulkhead over  
(unless ceiling height is raised to 2740mm)



### Option Internal02

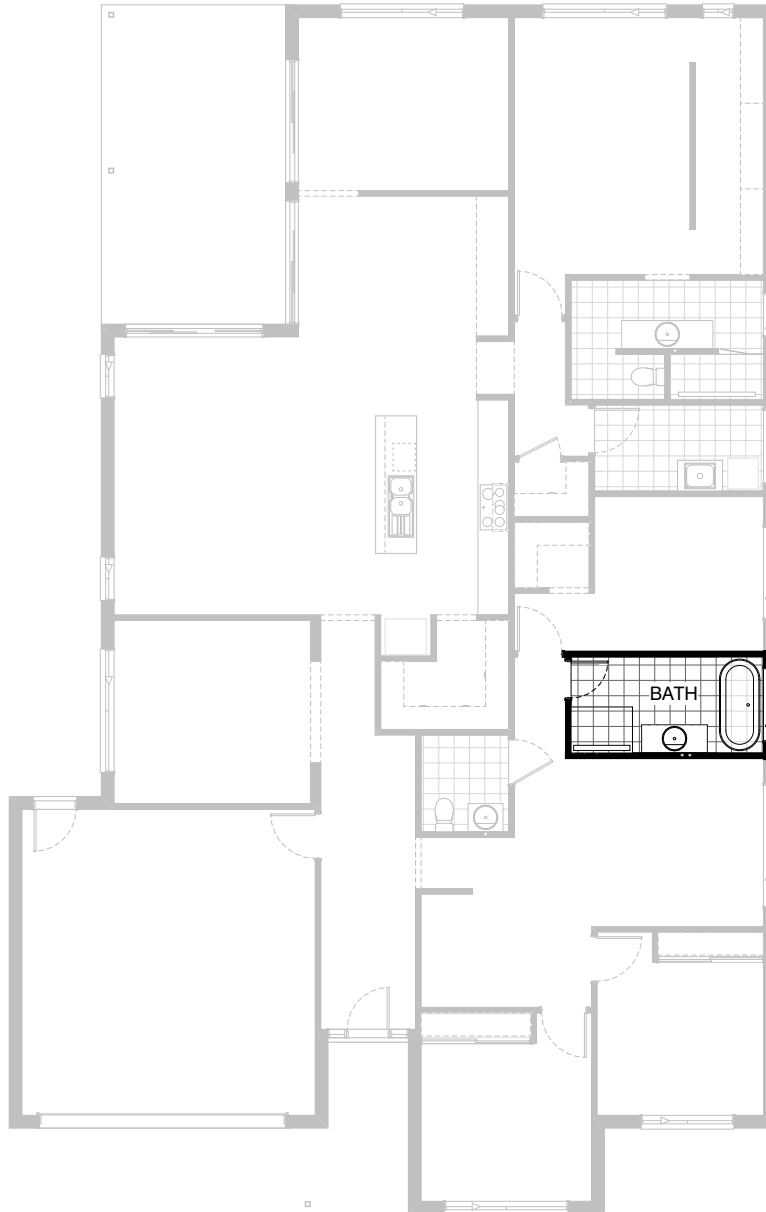
Provide built-in joinery option to create Study Nook near Meals area, including:  
600mm deep 32mm thick laminate desktop,  
1No. 450mm laminate linen unit,  
1No. 450mm drawer unit below desk,  
2No. 300mm deep 60mm thick open shelves.  
Remove bulkhead over  
(unless ceiling height is raised to 2740mm)



### Option Internal03

Provide built-in joinery option to Study Nook near Activity, including:  
600mm deep 32mm thick laminate desktop,  
1No. 450mm laminate linen unit,  
1No. 450mm drawer unit below desk,  
2No. 300mm deep 60mm thick open shelves.

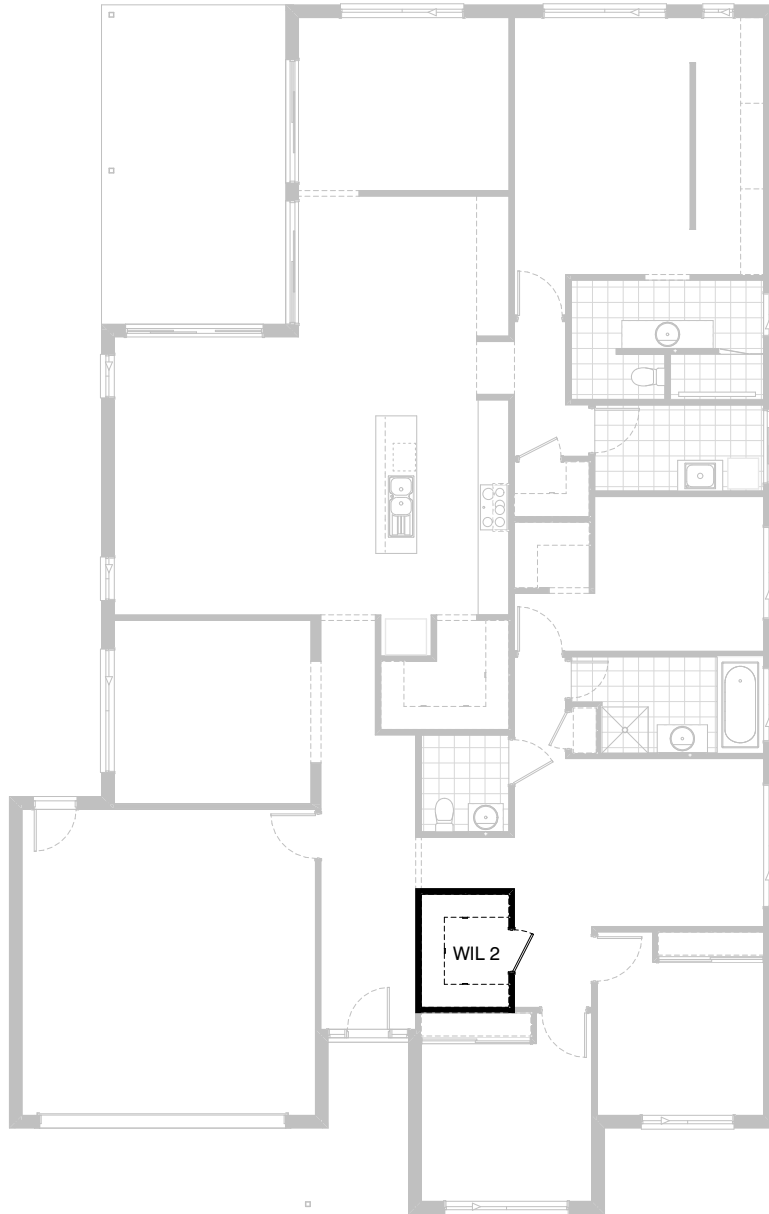
Note:  
Option not available with Internal05,  
Internal10 & External02.



### Option Internal04

Provide Bathroom upgrade option, including:  
1780mm freestanding bath,  
1200mm x 900mm tiled shower base with grate drain,  
1282mm vanity with single basin.  
Remove Linen cupboard from Passage.

Note:  
Option not available with External01.



### Option Internal05

Provide Walk-in Linen option in lieu of Study, including:  
additional stud and plaster walls,  
3No. 450mm shelving,  
820mm hinged door.

Note:  
Option not available with Internal03,  
Internal10 & External02.



**Option Internal06**

Provide Bedroom 5 option in lieu of Activity room, including:  
built-in Robe with 450mm shelf and hanging rail with full-width sliding doors,  
870mm hinged door in lieu of opening,  
1200mm x 1810mm aluminium sliding window in lieu of standard.

Note:  
Option not available with Internal07,  
Internal10 & External02.

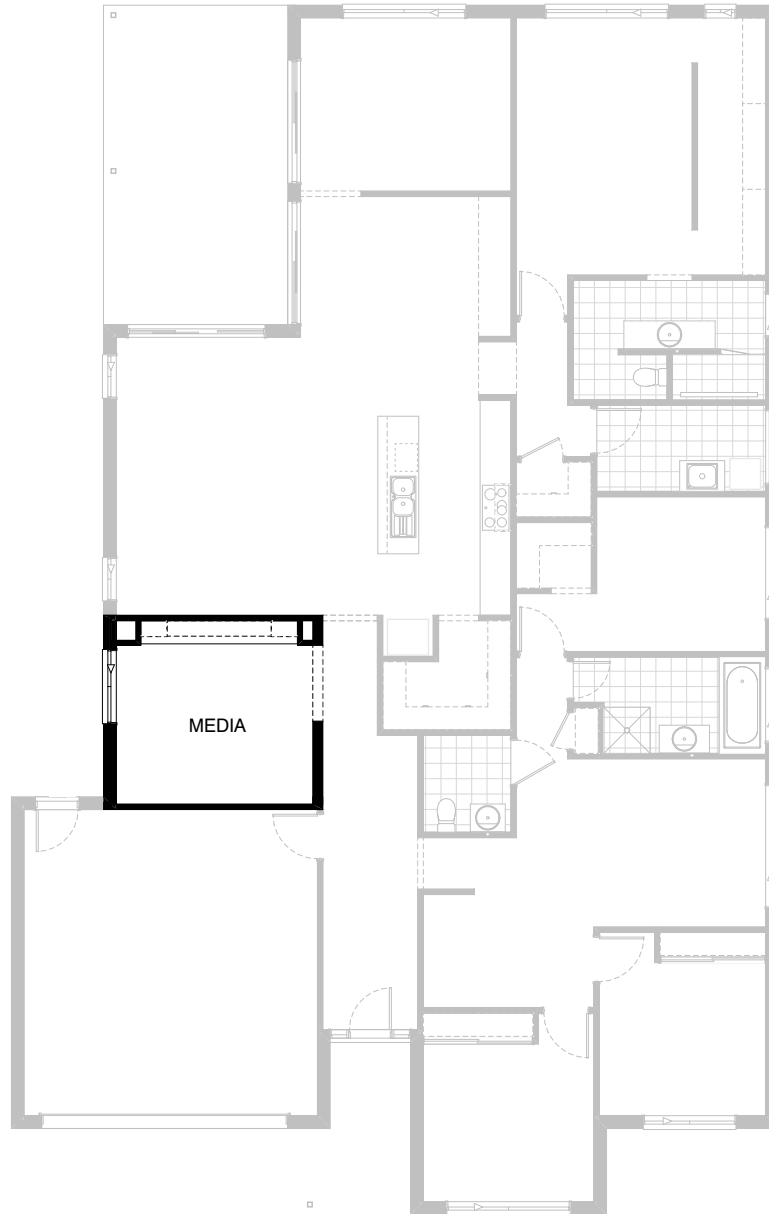




### Option Internal07

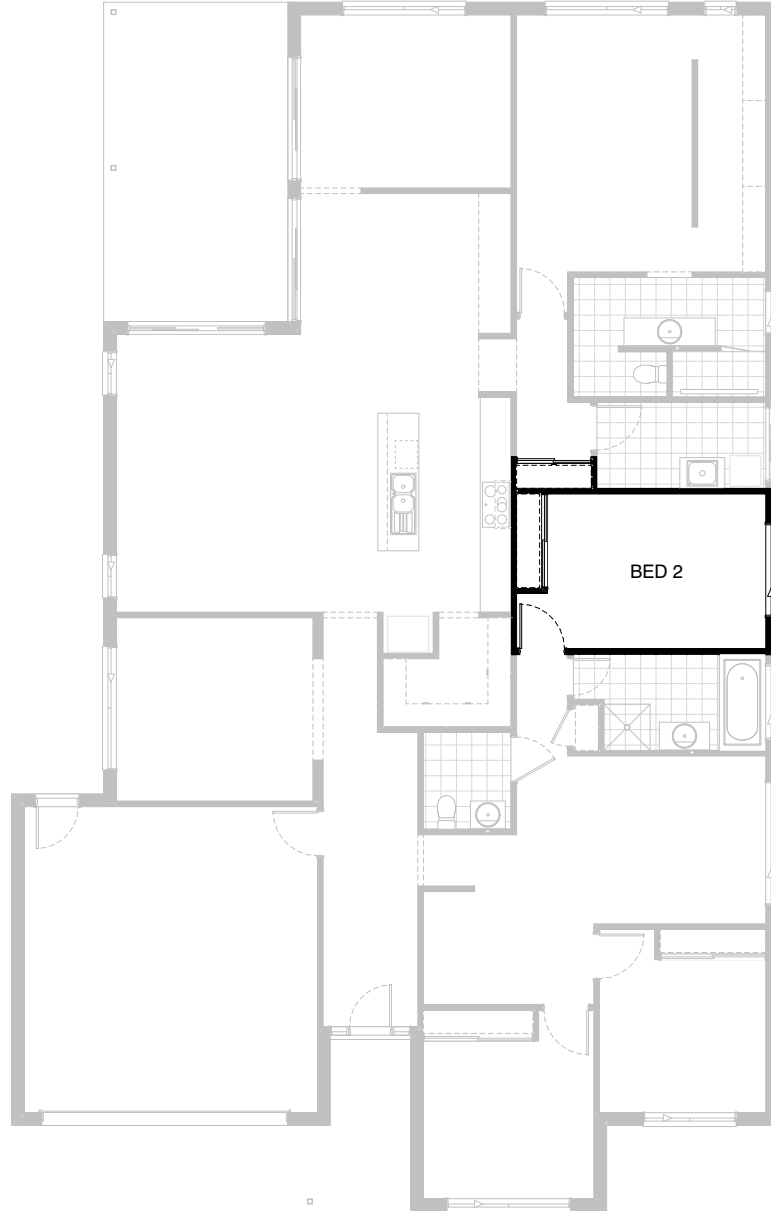
Provide floor plan option which swaps the locations of Bed 4 and Activity room. Activity room moves to the front of the home and Bed 4 moves between the Bathroom and Bed 3 as shown, with built-in Robe and 870mm hinged door. Provide 1200mm x 1810 aluminium sliding window to new Bed 4 in lieu of standard.

Note:  
Option not available with Internal06, Internal10 & External02.



### Option Internal08

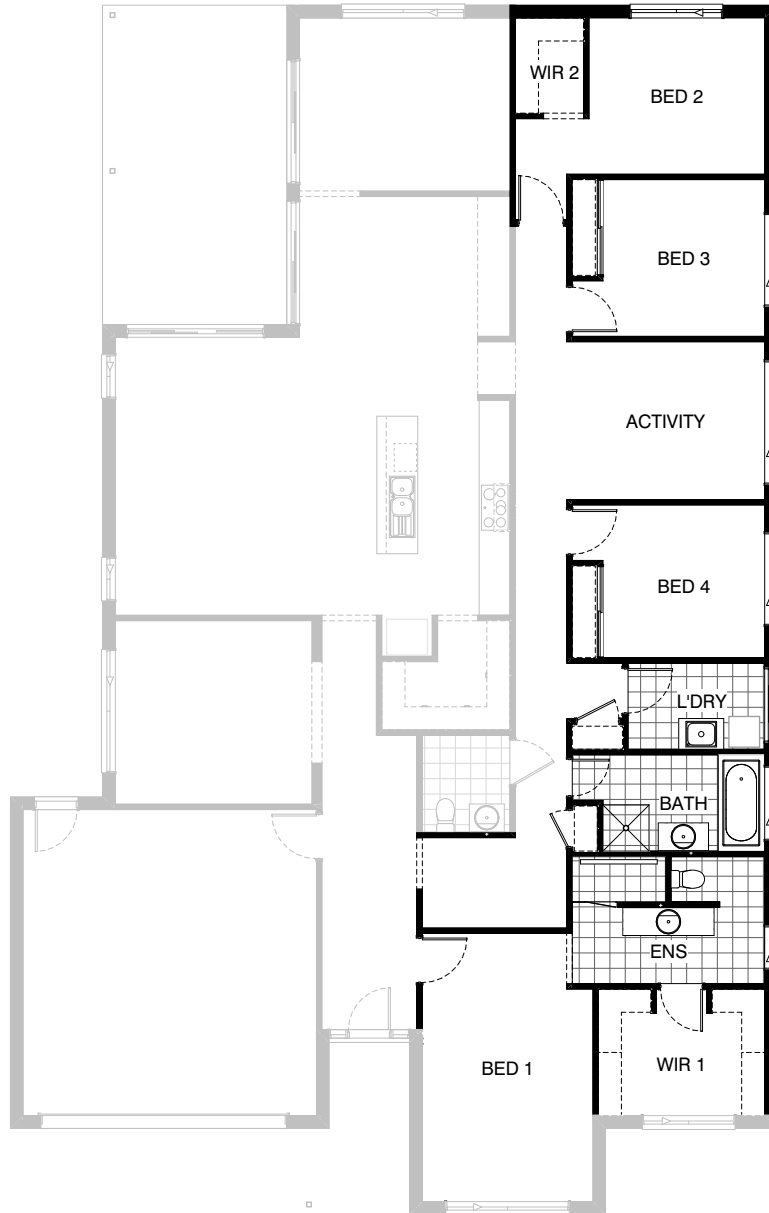
Provide built-in joinery option to Media room, including:  
 600mm deep 32mm thick laminate benchtop,  
 3No. 1000mm tv unit cupboards,  
 2No. 450mm open shelf overhead cupboards,  
 2No. 300mm deep 60mm thick open shelves over and  
 provide 2057mm x 1450mm aluminium sliding window in  
 lieu of standard.  
 Provide 2No. plaster-lined voids either side of joinery.  
 Bulkhead opening adjusts as shown.



### Option Internal09

Provide standard built-in Robe and Linen cupboard with sliding doors in lieu of Walk-in Robe and Walk-in Linen. Option increases the size of Bed 2 by 970mm.

Note:  
Option not available with Internal10 & External02.



### Option Internal10

Provide floor plan option that moves Bed 1 to the front of the home as shown.

Note:  
Option not available with Laundry01,  
Laundry02, Ensuite02, Ensuite03,  
Internal03, Internal05, Internal06, Internal07,  
Internal09, External01 & External02.



**Option External01**

Provide floor plan option which mirrors the rear of the home as shown.

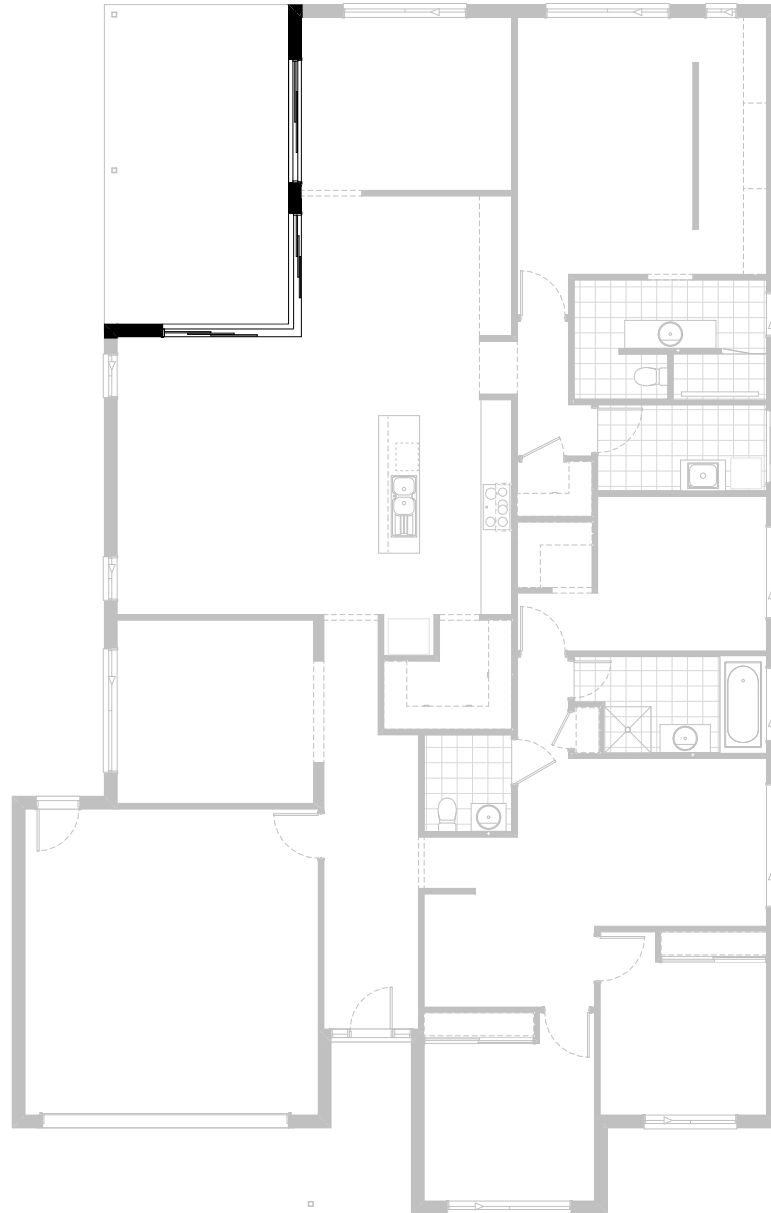
Note:  
Option not available with Internal04, Internal10 & External02.



### Option External02

Provide floor plan option which mirrors the rear of the home with Bed 1 to the front as shown.

Note:  
Option not available with Laundry01, Laundry02, Ensuite02, Ensuite03, Internal03, Internal05, Internal06, Internal07, Internal09 & External01.



### Option External03

Provide corner sliding door option.  
Remove 2110mm x 2690mm and 2110mm x 2410mm aluminium sliding doors and replace with 2107mm x 2410mm-2710mm aluminium corner sliding door.  
Provide 2No. 75mm x 75mm steel posts and steel beam to Engineer's design.