

HEATHMONT 27

🏠 4 🚗 2 🚗 2

Total squares 27.0sq



B
SERIES

Minimum
Lot Width
14m

Minimum
Lot Length
30.0m

Design Dimensions
11,030mm(W) x 23,150mm(L),

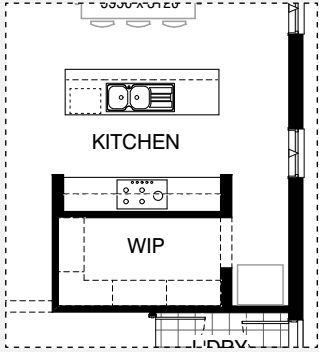
Facade Choices
Brentwood, Glendale, Inglewood, Long Beach
Malibu, Northridge, Pasadena, Santa Monica.
Details based on Inglewood façade floorplan (illustrated)

DESIGN DIMENSIONS

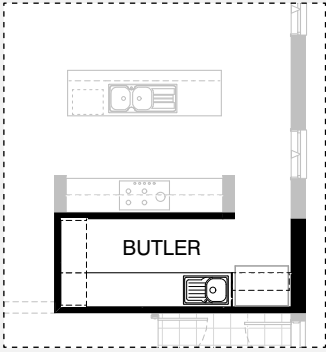
Residence	2077m ²	22.4sq
Garage	36.3m ²	3.9sq
Porch	7.3m ²	0.8sq
Total	251.3m²	27.0sq



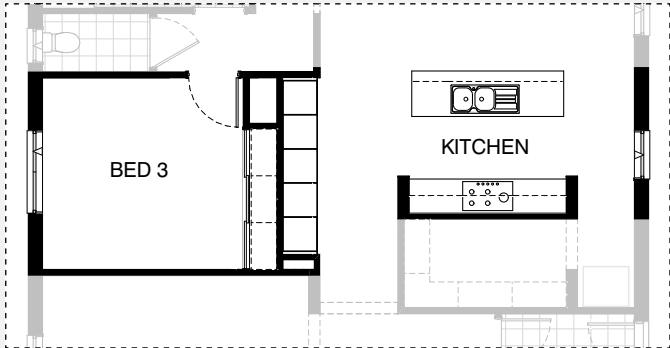
*Copyright conditions. All photos and illustrations are representative only. Floor plans and specifications may be varied by Burbank without notice, the dimensions are diagrammatic only and a Building Contract with final drawings will display correct dimensions and detail. All designs are the property of Burbank and must not be used, reproduced, copied or varied, wholly or in part without written permission from an authorised Burbank representative. Copyright Burbank Australia Pty Ltd. ABN 91 007 099 872. Builders Registration Number CDB-U-52603.



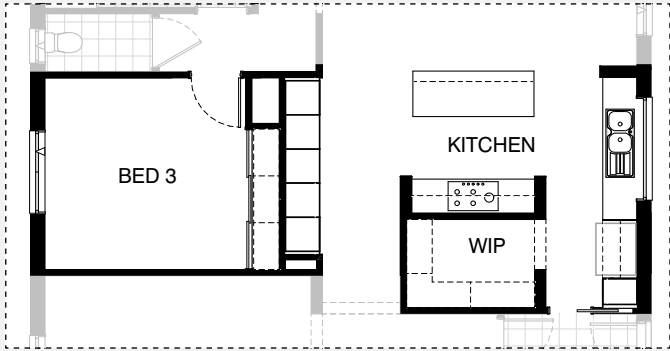
Master Kitchen design



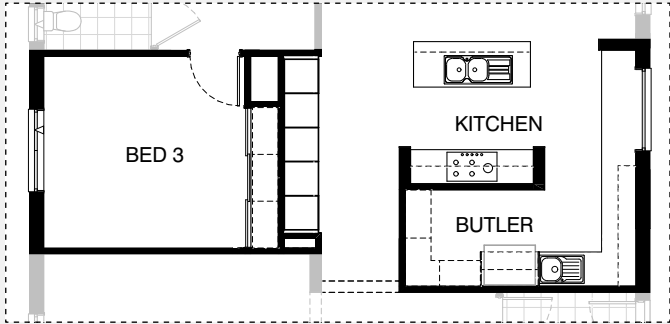
K01



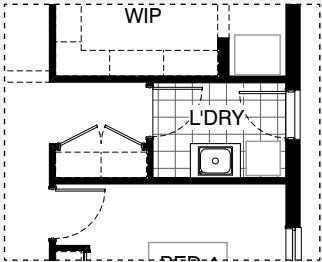
K02



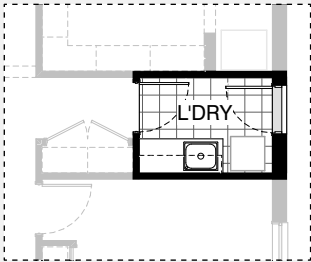
K03



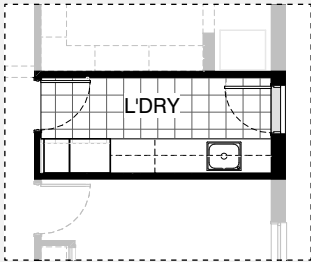
K04



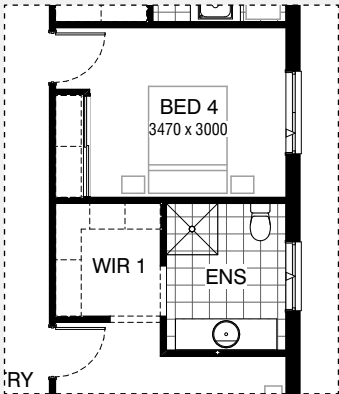
Master Laundry design



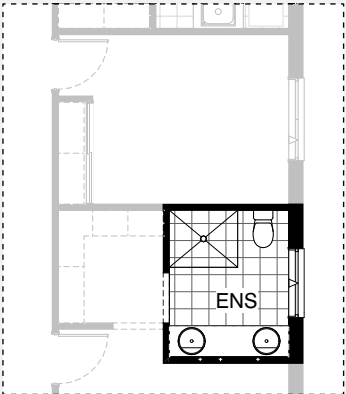
LD01



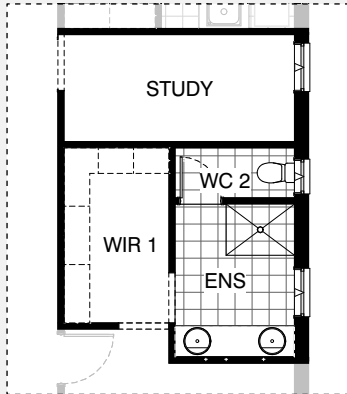
LD02



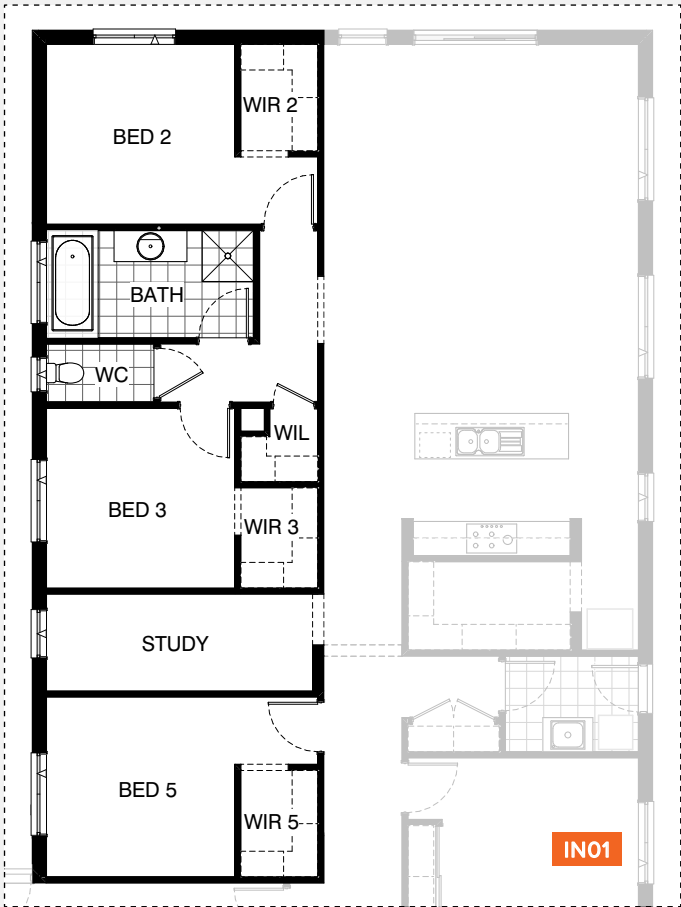
Master Ensuite design



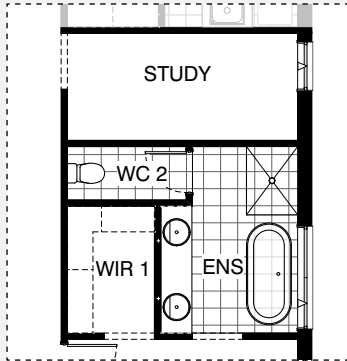
EN01



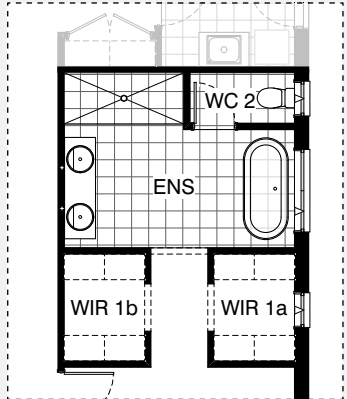
EN02



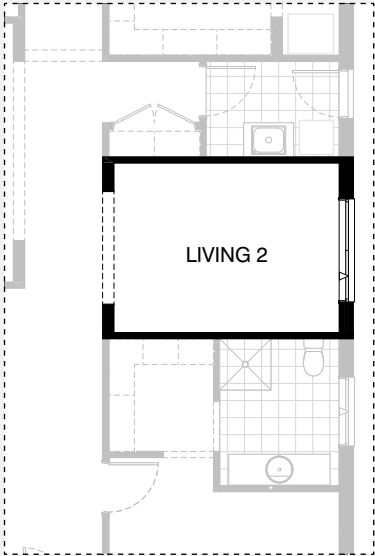
IN01



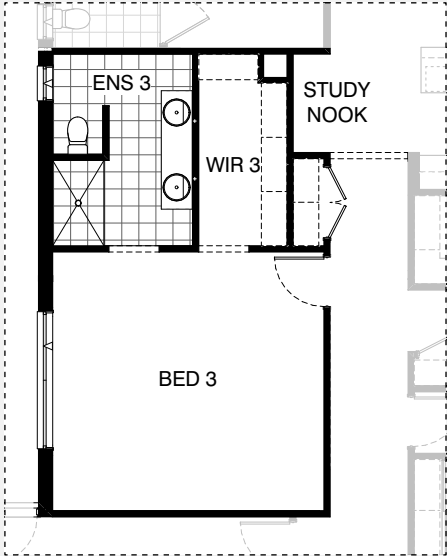
EN03



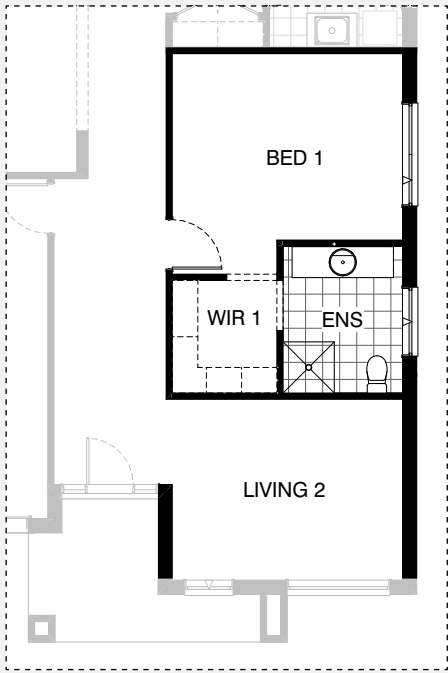
ENS4



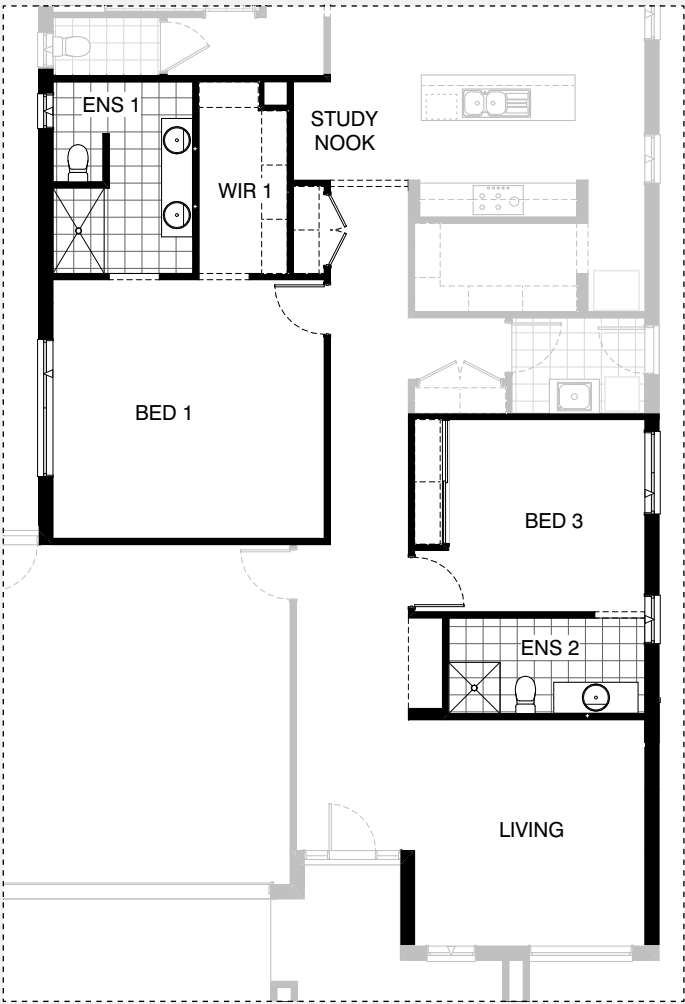
IN02



IN03



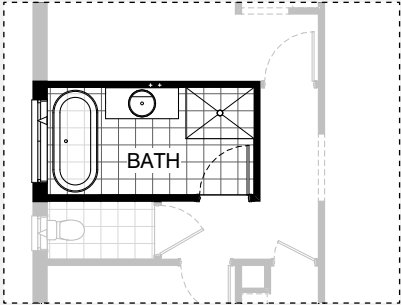
IN04



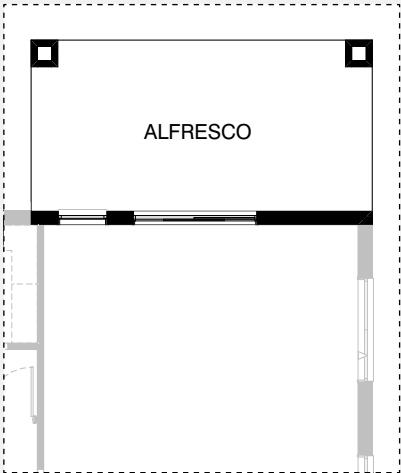
IN05

HEATHMONT 27

4 2 2



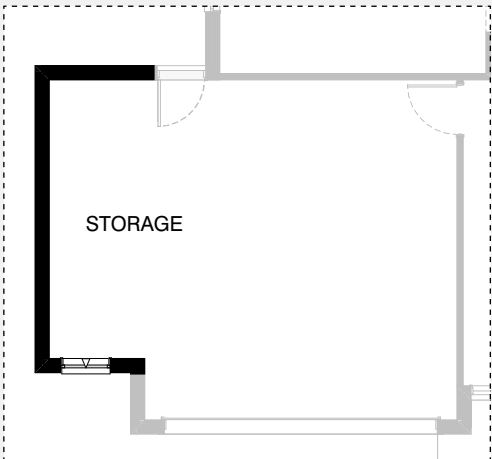
IN06



EX02



EX01



G01

GLENMONT 24

OPTION DESCRIPTIONS

Option Kitchen 01

Provide Kitchen upgrade option with Butler's Pantry in lieu of Walk-in Pantry, including:

1No. single bowl sink,
1No. 900mm base cupboard,
2No. 800mm base cupboards,
1No. open shelf over Ref. space,
additional 20mm stone benchtop and tiled splashback to suit.
Provide 1800mm high adjustable open shelving unit.

Option Kitchen 02

Provide built-in joinery to Kitchen in lieu of Walk-in Linen and Walk-in Robe to Bed 3, including:

2No. 600mm laminate oven towers with microwave provisions,
3No. 600mm laminated Pantry units,
1No. plaster-lined void.
Also replace under bench oven with 900mm base cupboard and microwave provision with 600mm base cupboard.
Increase size of Bed 3 by 220mm and provide standard built-in Robe with sliding doors.
Relocate 870mm hinged door and return air wall register.
Note: Option not available with Internal03, Internal05 & External01.

Option Kitchen 03

Provide 3-way Kitchen upgrade option with clear island bench and sink moved to exterior wall with built-in joinery in lieu of Walk-in Linen and Walk-in Robe to Bed 3, including:

1No. 900mm retractable rangehood,
1No. 900mm cooktop,
1No. double bowl sink,
1No. 450mm drawer unit,
1No. dishwasher provision,
2No. 900mm base cupboards,
2No. 800mm base cupboards,
2No. 450mm base cupboards,
2No. 600mm base cupboards,
2No. 600mm overhead cupboards,
2No. 600mm laminate oven towers with microwave provisions,
3No. 600mm laminated pantry units,
1No. 450mm laminate Pantry unit,
1No. open shelf over Ref. space,
additional 20mm stone benchtop and tiled splashback to suit.
Provide 1No. 1200mm x 1810mm aluminium fixed window with no bottom reveal in lieu of standard.
Provide 720mm cavity sliding door through to Laundry.
Increase size of Bed 3 by 220mm and provide standard built-in Robe with sliding doors. relocate 870mm hinged door and return air wall register.
Note: Option not available with Internal03, Internal05 & External01.

Option Kitchen 04

Provide 3-way Kitchen upgrade option with Butler's Pantry in lieu of Walk-in Pantry and built-in joinery in lieu of Walk-in Linen and Walk-in Robe to Bed 3, including:

1No. 900mm retractable rangehood,
1No. 900mm cooktop,
1No. double bowl sink,
1No. 450mm drawer unit,
1No. dishwasher provision,
2No. 900mm base cupboards,
5No. 800mm base cupboards,
2No. 600mm base cupboards,
1No. 900mm corner base cupboard,
1No. 850mm overhead cupboard,
1No. 800mm overhead cupboard,
2No. 600mm overhead cupboards,
1No. 400mm overhead cupboard,
2No. 600mm laminate oven towers with microwave provisions,
3No. 600mm laminated Pantry units,
1No. open shelf over Ref. space,

additional single bowl sink,
additional 20mm stone benchtop and tiled splashback to suit.
Provide 1No. 1200mm x 1450mm aluminium fixed window with no bottom reveal in lieu of standard, increase size of Bed 3 by 220mm and provide standard built-in Robe with sliding doors.
Relocate 870mm hinged door and return air wall register.
Note: Option not available with Internal03, Internal05 & External01.

Option Laundry 01

Provide Laundry upgrade with laminate base and overhead cupboards and laminated inset trough, including:
2No. 700mm base cupboards,
2No. 700mm overhead cupboards,
32mm laminate benchtop and tiled splashback to suit.

Option Laundry02

Provide Laundry upgrade with laminate base and overhead cupboards and laminated inset trough, including:
1No. 800mm base cupboard,
1No. 400mm base cupboard,
3No. 800mm overhead cupboards,
1No. 400mm overhead cupboard,
1No. 700mm laminated Linen unit,
1No. 450mm laminated Broom unit,
32mm laminate benchtop and tiled splashback to suit.
Increase benchtop height to 950mm and provides open space under bench to store washing machine and dryer side-by-side.
Relocate hinged access door to Laundry and remove built-in Linen cupboard.

Option Ensuite01

Provide Ensuite upgrade option including:
1No. 2082mm vanity with 2100mm wide wall-to-wall benchtop with double basins, including 1 row tiling beneath mirror to suit including returns, 1000mm x 1200mm tiled shower base in lieu of standard.

Option Ensuite02

Provide Ensuite upgrade option with Study in lieu of Bed 4, including:
1No. 2082mm vanity with double basins, including 1 row tiling beneath mirror to suit 2100mm wide wall-to-wall benchtop including returns,
1200mm x 900mm tiled shower base in lieu of standard,
enclosed WC with 720mm hinged door and 1029mm x 610mm aluminium awning window over. Increase size of Walk-in Robe.
Provide 1029mm x 850mm aluminium awning window to Ensuite and 1800mm x 850mm aluminium awning window to Study in lieu of standard.
Note: Option not available with Internal02, Internal04, Internal05 & External01.

Option Ensuite03

Provide Ensuite upgrade option with Study in lieu of Bed 4, including:
freestanding bath with 1200mm x 1810mm aluminium awning window over,
1No. 2082mm vanity with double basins, including 1 row tiling beneath mirror to suit 2230mm wide wall-to-wall benchtop including returns,
1200mm x 900mm tiled shower base in lieu of standard,
enclosed WC with 720mm hinged door.
Increases size of Bed 1 by 400mm.
Provide 1800mm x 850mm aluminium awning window to Study in lieu of standard.
Note: Option not available with Internal02, Internal04, Internal05 & External01.



GLENMONT 24

OPTION DESCRIPTIONS

Option Ensuite 04

Provide Ensuite upgrade option in lieu of Bed 4, including: freestanding bath with 1200mm x 1450mm aluminium awning window over, 1No. 1782mm vanity with double basins, 2100mm x 900mm wall-to-wall tiled shower base in lieu of standard, enclosed WC with 720mm hinged door and 1029mm x 610mm aluminium awning window over. Provide 2No. Walk-in Robes in lieu of standard with 1800mm x 610mm aluminium awning window. Increases size of Bed 1 by 600mm. Note: Option not available with Internal02, Internal04, Internal05 & External01.

Option Internal 01

Floor plan option which provides additional Bedroom and Study to the home in lieu of Living. Provide additional Walk-in Robe and 870mm hinged door in lieu of bulkhead opening to create additional bedroom. Provide 1200mm x 1450mm aluminium awning window to new bedroom and 1800mm x 850mm aluminium awning window to Study with 180mm bulkhead opening, move Bed 2, Bed 3, Bathroom and WC, Walk-in Linen and Walk-in Pantry to accommodate. Note: Option not available with Internal03, Internal05 & External01.

Option Internal 02

Floor plan option which provides additional Living to the home in lieu of Bed 4, remove built-in Robe and 870mm hinged door and provide 180mm bulkhead opening, provide 1800mm x 1810mm aluminium awning window in lieu of standard. Note: Option not available with Ensuite02, Ensuite03, Ensuite04, Internal04, Internal05 & External01.

Option Internal 03

Floor plan option which provides additional Ensuite and Walk-in Robe to Bed 3 in lieu of Living and built-in Robe and relocate 870mm hinged door. Bed 3 Ensuite includes: 1No. 2082mm vanity with double basins, 900mm x 1500mm tiled shower base, toilet pan located behind nib wall with 1800mm x 610mm aluminium awning window, provide Study Nook with bulkhead over and built-in Linen cupboard with 2No. 620mm doors. Note: Option not available with Kitchen02, Kitchen03, Kitchen04, Internal01, Internal05 & External01.

Option Internal04

Floor plan option which provides additional Living to the front of the home with Bed 1 relocated behind Living, provide 1800mm x 1810mm aluminium awning window to new Bed 1 location in lieu of standard. Note: Option not available with Ensuite02, Ensuite03, Ensuite04, Internal02, Internal05 & External01.

Option Internal 05

Floor plan option which relocates Bed 1, Ensuite and Walk-in Robe, relocates the Living to then front of the home and provides additional Ensuite to Bed 3. Ensuite to Bed 3 includes: 1No. 1482mm vanity with single basin, toilet pan and 900mm x 900mm tiled shower base, 1No. 1200mm x 850mm aluminium awning window. hinged door access and Robe flip locations. Bed 1 Ensuite includes: 1No. 2082mm vanity with double basins, 1500mm x 900mm tiled shower base, toilet pan located behind nib wall with 1800mm x 610mm aluminium awning window, provide Study Nook with bulkhead over and built-in Linen cupboard with 2No. 620mm doors. Provide Key Drop to Entry passage with 180mm nib wall and bulkhead over. Note: Option not available with Kitchen02, Kitchen03, Ensuite02, Ensuite03, Ensuite04, Internal01, Internal02, Internal03, Internal04 & External01.

Option Internal 06

Provide Bathroom upgrade option, including: freestanding bath and 1200mm x 900mm tiled shower base in lieu of standard.

Option External 01

Provide Alfresco option in lieu of Living area with structural concrete floor, 1No. 470mm brickwork piers and tiled hip roof over. Kitchen, Walk-in Pantry, Laundry, Meals and Family relocate to accommodate. Living is deleted to accommodate. Replace Walk-in Robe to Bed 3 with standard built-in Robe with sliding doors. Walk-in Linen is deleted. Hinged access door to Bed 4 relocated. Study provided with bulkhead opening and 1800mm x 850mm aluminium awning window, provide 1200mm x 1450mm awning window to new Bedroom. Move Bed 2, Bed 3, Bathroom and WC to accommodate. Note: Option not available with Kitchen02, Kitchen03, Ensuite02, Ensuite03, Ensuite04, Internal01, Internal02, Internal03, Internal04 & Internal05.

Option External 02

Provide Alfresco option with structural concrete floor, 2No. 470mm x 470mm brick piers and extension of tiled hip roof. Note: Increases length of home by 3.0m, Increases floor area by 18.0m² and requires minimum 32m lot length.

Option Garage 01

Provide extension to Garage to create additional Storage area including: additional 2057mm x 850mm aluminium awning feature window. Increases width of the house by 1680mm. Increases area of the house by 9.07m².

