

**Facades available:**

Sheffield, Aster, Eastwood,
Hartford, Lancaster, Leawood,
Newbury, Wiltshire
<b>Overall home width</b> <b>16.67m</b>
<b>Overall home length</b> <b>22.79m</b>

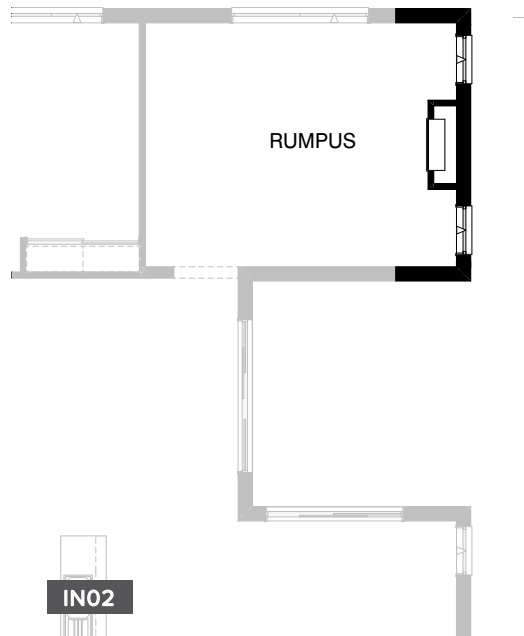
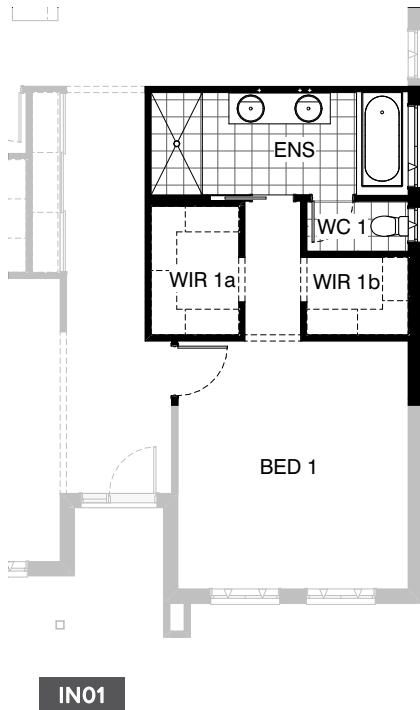
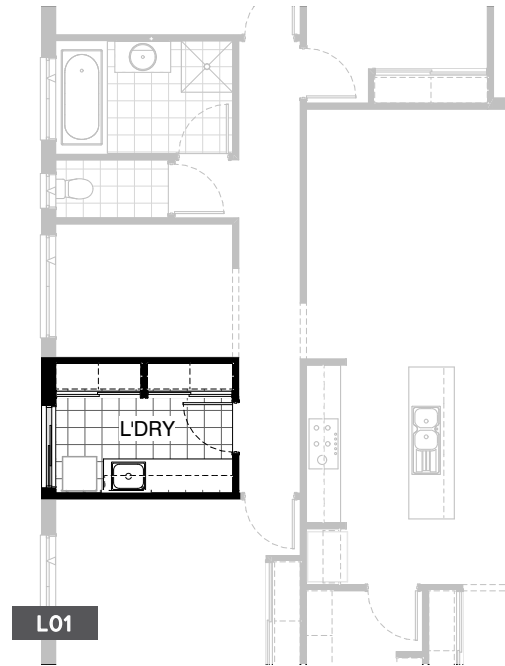
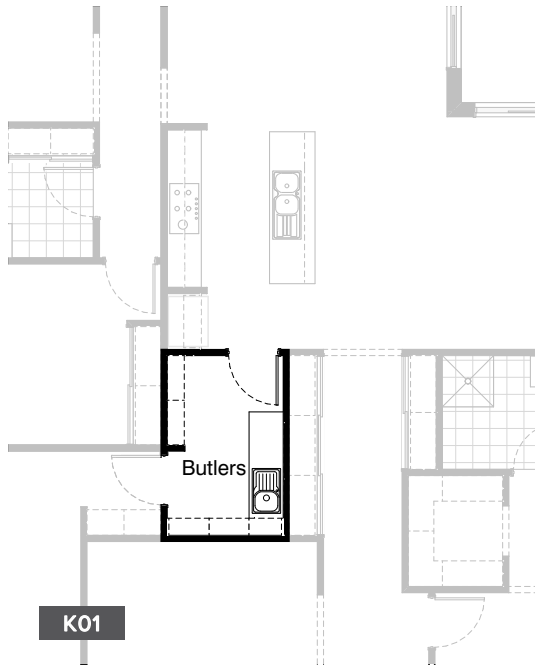
Residence	258.6m <sup>2</sup>	27.8sq
Garage	41.1m <sup>2</sup>	4.4sq
Porch	4.1m <sup>2</sup>	0.4sq
<b>Total</b>	<b>303.8m<sup>2</sup></b>	<b>32.7sq</b>

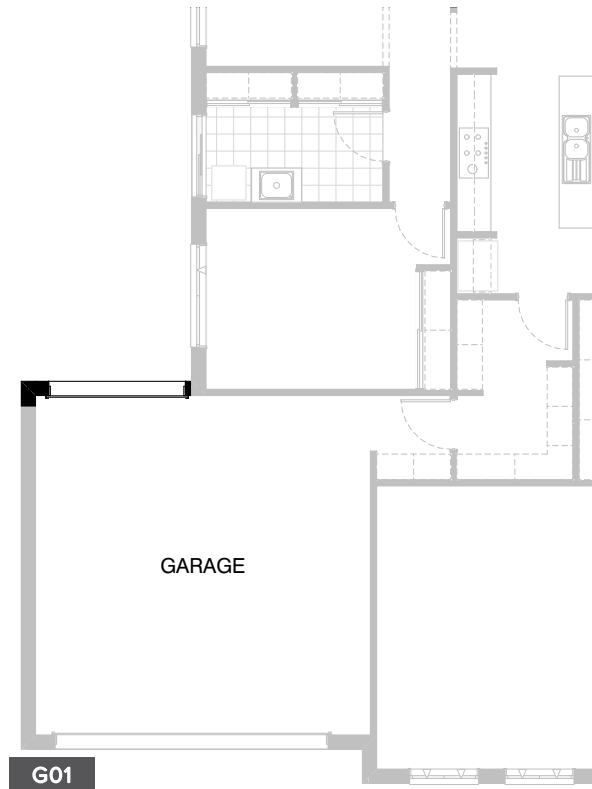
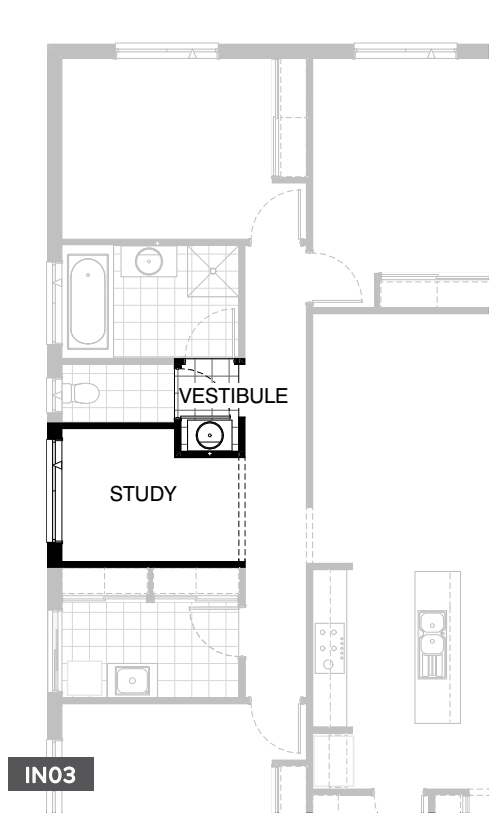
**FLOORPLAN OPTIONS**

We personalise our floorplans. Talk to us about our huge range of ready-to-go design options or simply visit [www.burbank.com.au/south-australia](http://www.burbank.com.au/south-australia) for more details.

Listed details based on Sheffield facade floorplan (illustrated)

\*Copyright conditions. All photos and illustrations are representative only. Floor plans and specifications may be varied by Burbank without notice, the dimensions are diagrammatic only and a Building Contract with final drawings will display correct dimensions and detail. All designs are the property of Burbank and must not be used, reproduced, copied or varied, wholly or in part without written permission from an authorised Burbank representative. Copyright Burbank Australia (SA) Pty Ltd. ABN 96 165 533 406. BLD 266709.





**OPTION DESCRIPTIONS****K01 - Kitchen Option 01**

Provide WIP upgrade to create Butlers Pantry including 1No. 300mm deep shelving and 300mm deep 1800mm(h) laminated shelving module. Provide 2No. 900mm base cabinets including single bowl sink and additional 32mm laminate benchtop and tiled splash back to suit, 2No. 300mm solar tube skylights.

**L01 - Laundry Option 01**

Provide Laundry upgrade with laminated insert trough, 2No. 800mm base cupboards, 1No. 600mm base cupboard, 2No. 800mm overhead cupboards & 1No. 600mm overhead cupboard with additional tiled splash back and benchtop to suit.

**IN01 - Internal Option 01**

Provide Ensuite upgrade option by deleting coats cupboard, decrease Ensuite width by 200mm and Provide 1No. 720mm flush panel cavity sliding door. Provide additional 1No. 1800mm x 900mm tiled in shower base, 1No. 1782mm wide vanity unit with 2No. basins, 1No. 1675mm wide bath hob, 1No. 1200mm x 1450mm aluminium awning window, in close toilet with 720mm flush panel hinged door and 1No. 1029mm x 610mm aluminium awning window to WC 1. Decrease Bed 1 width by 200mm (4500mm). Increase WIR 1 width (2280mm), decrease WIR 2 width (1380mm) and delete left hand side hanging rail on WIR 2.

**IN02 - Internal Option 02**

Provide Real Flame Inspire 900 Gas fireplace, 400mm off floor level in a 1550mm x 500mm boxed out plaster wall with a 4 sided black fascia to Rumpus room side wall with capped gas point. Provide 2No. 1800mm x 850mm aluminium awning windows.

**IN03 - Internal Option 03**

Provide 3-way Bathroom upgrade by reducing part Study by 600mm and provide 782mm vanity unit with mirror above including additional floor tiles to suit.C.

**G01 - Garage Option 01**

Provide 1No. 2140mm x 2410mm Garage door to rear of Garage as per colour selection.

**EX01 - External 01**

Provide Alfresco option with earth floor to Alfresco. Increases area by 15.24m<sup>2</sup>. benchtop to suit.

**EX02 - External 02**

Provide Alfresco option including : 1No. 470mm x 470mm brick pier and earth floor to Alfresco. Delete Rumpus and provide additional 1No. 2057mm x 1210mm aluminium awning window to Meals. Increase Bed 4 length by 60mm (3260mm) and decrease Bed 4 width by 50mm (3750mm).