

KEYSTONE 44

5 3 2

Total squares 43.8sq

B
SERIES

Minimum
Lot Width
14.0m

Minimum
Lot Length
28.0m



Design Dimensions
10,310mm(W) x 21,230mm(L).

Facade Choices
Fullerton, Huntington, Moorpark,
Oakwood, Palsades, Redlands, Riverside.
Details based on Riverside façade floorplan (illustrated)

DESIGN DIMENSIONS

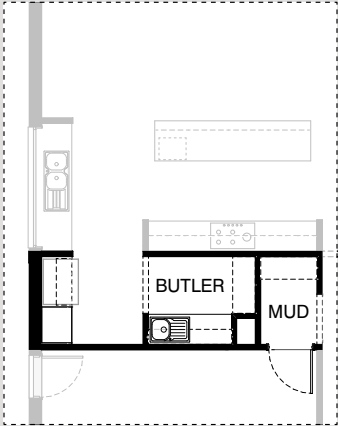
Residence	350.2m ²	377sq
Garage	36.1m ²	3.9sq
Porch	3.7m ²	0.4sq
Alfresco	17.1m ²	1.8sq
Total	407.1m²	43.8sq

Burbank

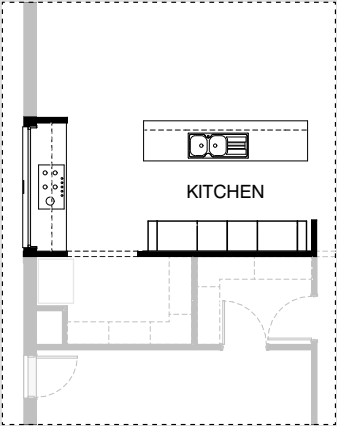
*Copyright conditions. All photos and illustrations are representative only. Floor plans and specifications may be varied by Burbank without notice, the dimensions are diagrammatic only and a Building Contract with final drawings will display correct dimensions and detail. All designs are the property of Burbank and must not be used, reproduced, copied or varied, wholly or in part without written permission from an authorised Burbank representative. Copyright Burbank Australia Pty Ltd. ABN 91 007 099 872. Builders Registration Number CDB-U-52603.



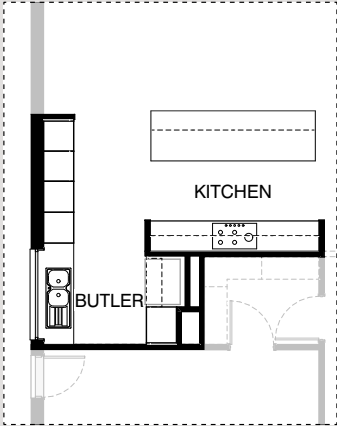
KITCHEN OPTIONS



K01

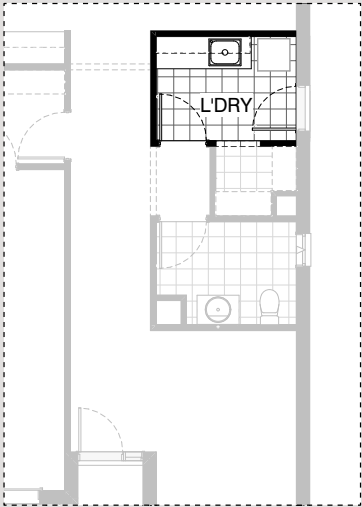


K02

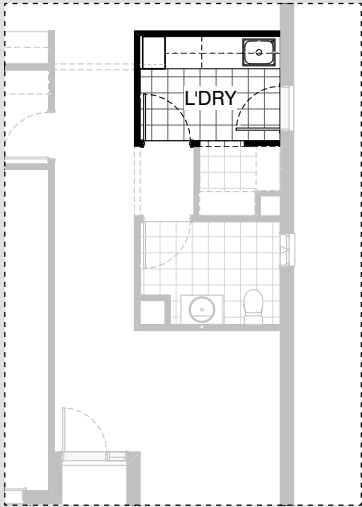


K03

LAUNDRY OPTIONS

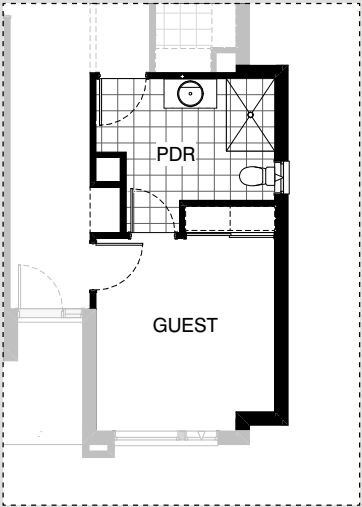


L01



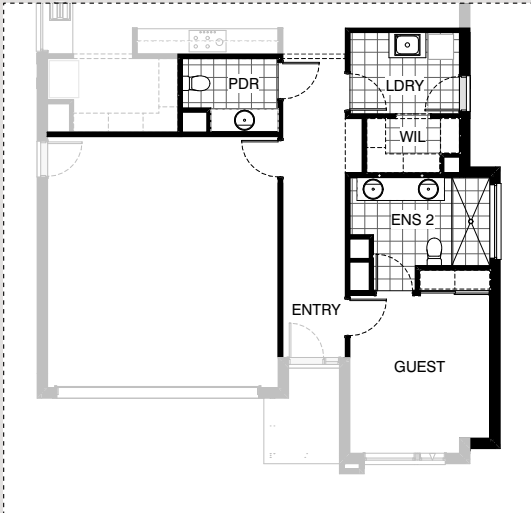
L02

INTERNAL OPTIONS

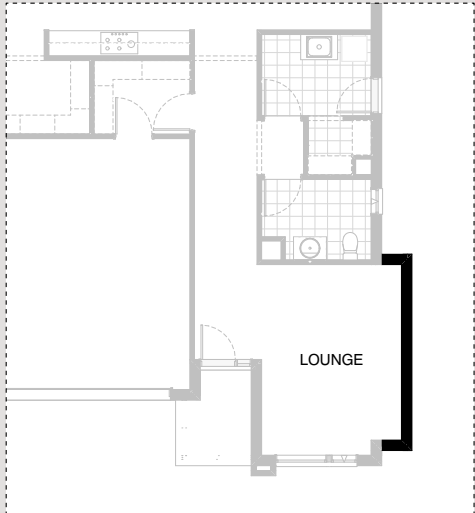


IN01

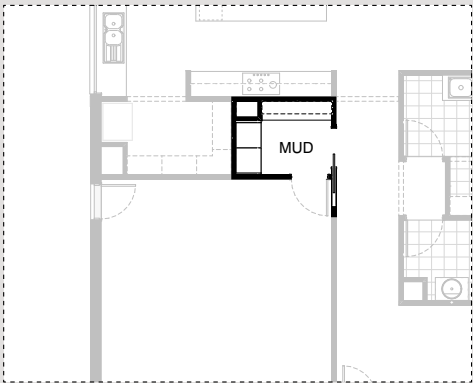
INTERNAL OPTIONS



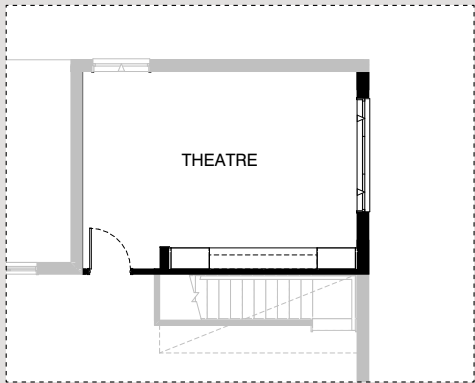
IN02



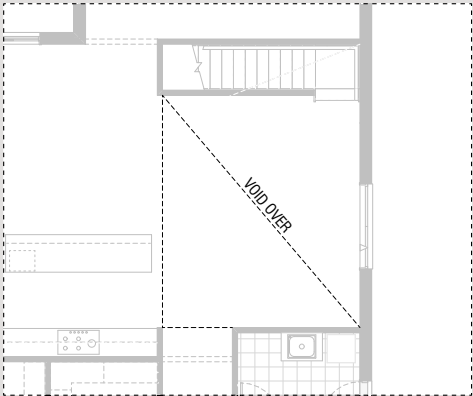
IN03



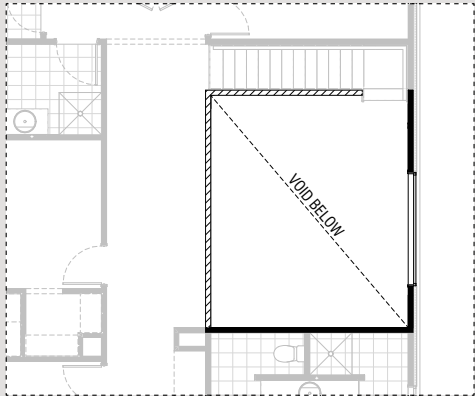
IN04



IN05



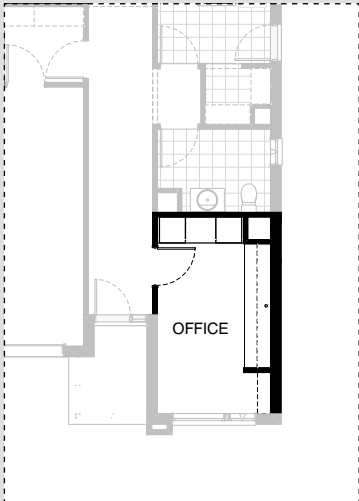
IN06 GF



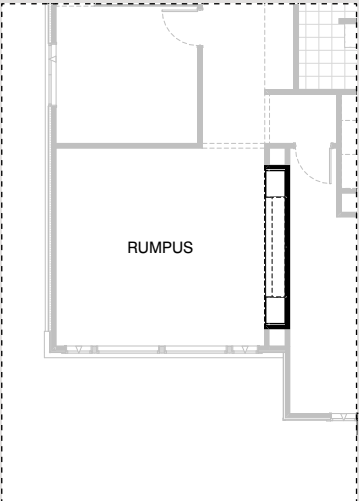
IN06 FF



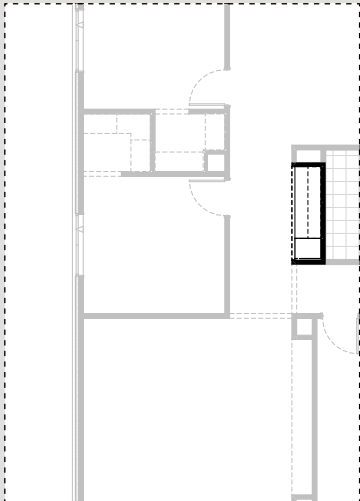
INTERNAL OPTIONS



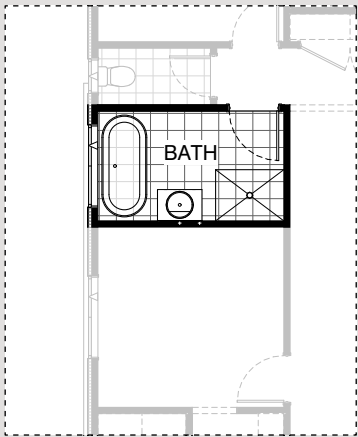
IN07



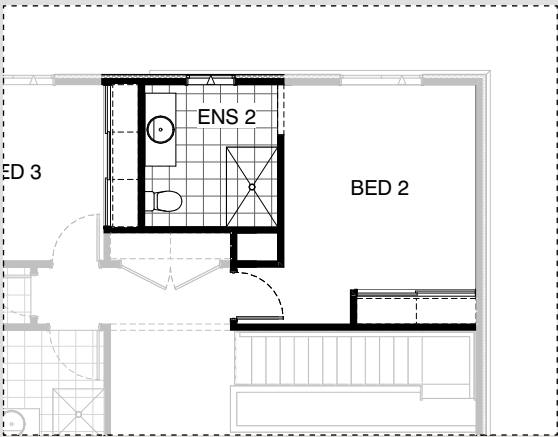
IN08



IN09



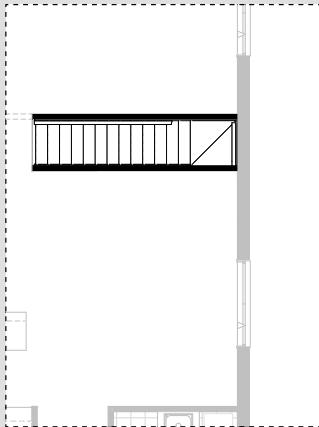
IN10



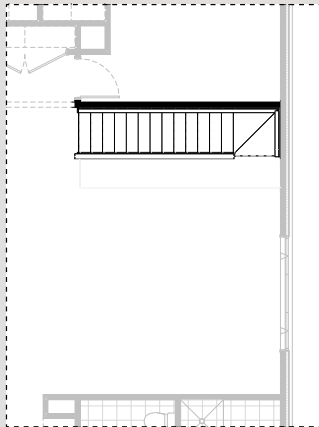
IN11



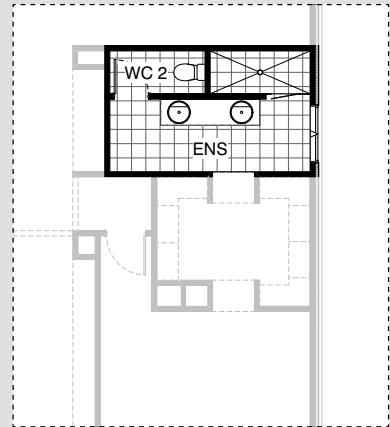
INTERNAL OPTIONS



IN12 GF

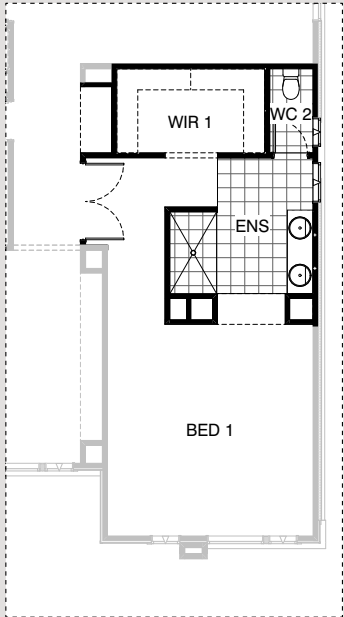


IN12 FF

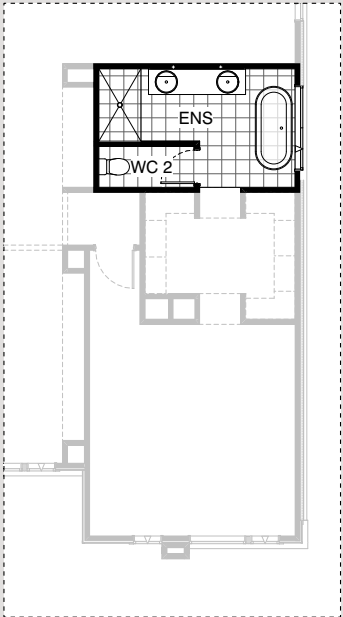


EN01

ENSUITE OPTIONS

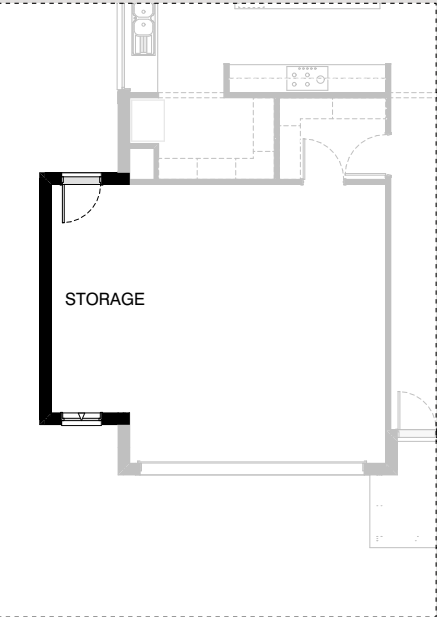


EN02



EN03

GARAGE OPTIONS



G01

KEYSTONE 44

OPTION DESCRIPTIONS

Kitchen Option 01

Provide Butler's Pantry in lieu of Walk-in Pantry, including:
additional single bowl sink,
2No. 800mm base cupboards,
2No. 300mm deep 60mm thick open shelves over sink,
1No. 930mm laminate open shelf over Ref. space,
1No. 700mm laminated pantry unit,
additional benchtop and tiled splashback to suit and
additional plaster-lined void.
Mud room decreases by 1160 to accommodate and
provide 1020mm bulkhead in lieu of hinged door.

Kitchen Option 02

Provide Kitchen upgrade option with sink relocated to island bench and
Provide Kitchen upgrade option with sink relocated to island bench
and cooktop relocated to exterior wall benchtop, including:
900mm cooktop,
900mm retractable rangehood,
dishwasher provision,
450mm drawer unit,
2No. 900mm base cupboards,
3No. 800mm base cupboards,
1No. 400mm base cupboard,
2No. 800mm overhead cupboards,
2No. 600mm laminate oven towers with microwave provisions,
2No. 800mm laminated pantry units,
2No. 180mm laminate wine racks,
1No. 514mm x 2410mm aluminium fixed
window with no bottom reveal.

Kitchen Option 03

Provide Kitchen upgrade option with sink relocated to
create Butler's Pantry in lieu of WIP, including:
900mm cooktop,
900mm retractable rangehood,
dishwasher provision,
450mm drawer unit,
2No. 900mm base cupboards,
6No. 800mm base cupboards,
2No. 400mm base cupboards,
2No. 800mm overhead cupboards,
2No. 400mm overhead cupboards,
2No. 600mm laminate oven towers with microwave provisions,
1No. 700mm laminated pantry unit,
2No. 600mm laminated pantry units,
1No. 970mm laminate open shelf over Ref. space,
1No. 1200mm x 1810mm aluminium fixed window with no bottom
reveal, benchtop increases to 1000mm deep.

Laundry Option 01

Provide Laundry upgrade with laminate base and
overhead cupboards and inset trough, including:
1No. 900mm base cupboard,
1No. 900mm overhead cupboard,
1No. 800mm base cupboard,
1No. 800mm overhead cupboard,
additional benchtop and tiled splashback to suit.

Laundry Option 02

Provide Laundry upgrade with laminate base cupboards and
overhead cupboards and inset trough, including:
1No. 700mm base cupboard,
3No. 700mm overhead cupboards,
1No. 400mm laminate broom unit,
additional benchtop and tiled splashback to suit.
Increases benchtop height to 950mm and provides open space
under to store washing machine and dryer side-by-side.

Internal Option 01

Provide Guest Bedroom option with 2-way Powder
in lieu of Office, including:
Built-in Robe with sliding doors and 450mm shelf with hanging rail,
additional 870mm and 820mm hinged doors to new bedroom,
additional 1350mm x 900mm tiled shower base,
982mm vanity and 1029mm x 610mm aluminium awning window
to new Powder room,
Key drop with bulkhead over,
option pushes ground floor exterior wall out by 720mm with tiled roof over,
option adds 4.83m² to total floor area.

Internal Option 02

Provide Guest Bedroom option with dedicated Ensuite
in lieu of Office and Powder, including:
Built-in Robe with sliding doors and 450mm shelf with hanging rail,
additional 2No. 870mm hinged doors to new bedroom,
additional 2100mm x 900mm wall-to-wall tiled shower base,
1No. 2082mm vanity with double basins,
and 350mm x 1810mm aluminium fixed window over shower,
Option pushes ground floor exterior wall out by 720mm
with tiled roof over,
870mm hinged door to Laundry moves as shown,
and WIL increases with Key Drop with bulkhead over,
Powder room is relocated to Mud room with 870mm hinged door,
1No. 1582mm vanity with single basin including
1 row tiling beneath mirror to suit wall-to-wall benchtop
including returns in lieu of standard,
moves 870mm hinged door to Garage.
Option adds 4.83m² to total floor area.

Internal Option 03

Provide Lounge in lieu of Office, including:
Option pushes ground floor exterior wall out
by 720mm with tiled roof over.
Option adds 3.37m² to total floor area.

Internal Option 04

Provide built-in joinery to Mud room, including:
450mm deep 32mm thick laminate benchtop,
2No. 800mm TV unit drawers,
2No. 300mm deep 60mm thick open shelves,
2No. 600mm laminate linen unit,
920mm cavity sliding door added to Mud room
in lieu of hinged door.

Internal Option 05

Provide Theatre in lieu of Living with built-in joinery, including:
1No. 870mm hinged door in lieu of bulkhead opening,
450mm deep 32mm thick laminate benchtop,
2No. 800mm TV unit cupboards,
1No. 700mm TV unit cupboard,
2No. 300mm deep 60mm thick open shelves,
2No. 800mm laminated cupboards,
1No. 180mm plaster-lined nib wall,
1No. 1029mm x 2410mm aluminium awning window in lieu of
1800mm x 1810 aluminium awning window.

Internal Option 06 GF

Provide double height void over Family area
by removing Activity above,
provide 1457mm x 2410mm aluminium fixed window
to First floor in lieu of standard,
provide extension to 1020mm high dwarf wall balustrade



KEYSTONE 44

OPTION DESCRIPTIONS

Internal Option 06 FF

Provide double height void over Family area by removing Activity above,
provide 1457mm x 2410mm aluminium fixed window to First floor in lieu of standard,
provide extension to 1020mm high dwarf wall balustrade.

Internal Option 07

Provide built-in joinery to Office, including:
600mm deep 32mm thick benchtop,
2No. 800mm overhead cupboard,
3No. 400mm overhead open shelf units,
1No. 700mm laminated cupboard,
2No. 600mm laminated cupboards,
1800mm high x 300mm wide open shelving,
provide additional 870mm hinged door,
plaster-lined void and nib wall.

Internal Option 08

Provide built-in joinery to Rumpus, including:
450mm deep 32mm thick laminate benchtop,
2No. 800mm TV unit cupboards,
1No. 700mm TV unit cupboard,
2No. 600mm laminated cupboards,
2No. 300mm deep 60mm thick open shelves,
Reduce the bulkhead depth to 108mm.

Internal Option 09

Provide built-in joinery to Study Nook, including:
600mm deep 32mm thick laminate benchtop,
1No. 450mm drawer unit under desk,
1No. 450mm laminated cupboard,
2No. 300mm deep 60mm thick open shelves,
Reduce the bulkhead depth to 108mm.

Internal Option 10

Provide Bathroom upgrade option, including:
1No. 1780mm freestanding bath,
1No. 1200mm x 900mm tiled shower base,
1No. 782mm vanity with single basin.

Internal Option 11

Provide Ensuite option to Bed 2 in lieu of 2No. WIRs, including:
1No. 1400mm x 900mm tiled shower base,
1No. 1282mm vanity with single basin,
1No. toilet pan,
1No. 1029mm x 850mm aluminium awning window,
Ensuite 2 encroaches 200mm in to Bed 2
Provide 2No. built-in Robes with 450mm shelving

and hanging rails to Bedrooms.

Internal Option 12 GF

Alternate Stair layout.

Internal Option 12 FF

Alternate Stair layout.

Ensuite Option 01

Provide Ensuite upgrade option, including:
1No. 2082mm vanity with double basins,
2100mm x 900mm tiled shower base,
720mm hinged door to create enclosed WC.

Ensuite Option 02

Provide Ensuite upgrade option with re-arranged layout, including:
1No. 1782mm double basins vanity with 1790mm benchtop abutting one wall,
1750mm x 1000mm wall-to-wall tiled shower base,
enclosed WC with 720mm hinged door,
1No. 1200mm x 610mm aluminium awning window to WC 2,
1No. 1200mm x 850mm aluminium awning window to Ensuite in lieu of standard,
relocated WIR with 3No. 450mm shelves,
Provide 2No. 820mm hinged entry doors to Bed 1 in lieu of standard,
Study Nook decreases to accommodate.

Ensuite Option 03

Provide Ensuite upgrade option with re-arranged layout, including:
1No. 1780mm freestanding bath,
1No. 2082mm vanity with double basins,
1550mm x 900mm wall-to-wall tiled shower base,
enclosed WC with 720mm hinged door,
1No. 1200mm x 1810mm aluminium awning window over freestanding bath in lieu of standard.

Garage Option 01

Provide extension to Garage to create additional Storage area including:
additional 1No. 2057mm x 850mm aluminium awning feature window,
Increases width of the home by 1680mm,
Increases area of the home by 9.07m².

