

|                                   |               |
|-----------------------------------|---------------|
| <b>Facades available:</b>         |               |
| Coastal, Delta, Kingston, Nouveau |               |
| Scarborough, Traditional, York    |               |
| <b>Overall home width</b>         | <b>11.39m</b> |
| <b>Overall home length</b>        | <b>24.47m</b> |

|              |                           |               |
|--------------|---------------------------|---------------|
| Residence    | 196.9m <sup>2</sup>       | 21.2sq        |
| Garage       | 37.4m <sup>2</sup>        | 4.0sq         |
| Porch        | 3.0m <sup>2</sup>         | 0.3sq         |
| Alfresco     | 11.6m <sup>2</sup>        | 1.2sq         |
| <b>Total</b> | <b>248.9m<sup>2</sup></b> | <b>26.8sq</b> |

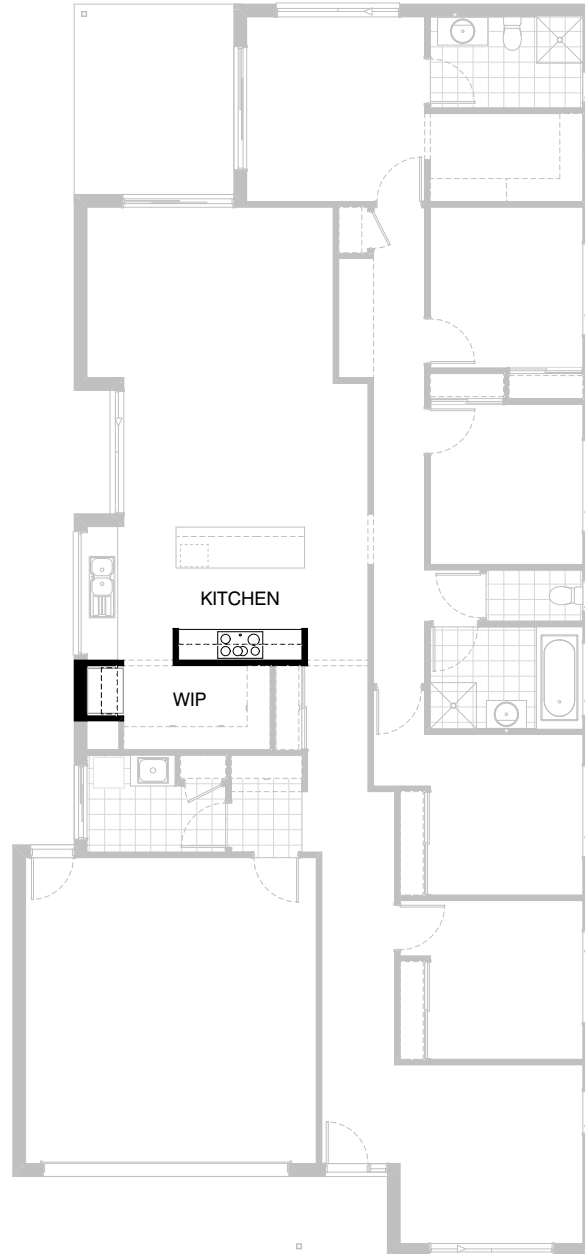
**FLOORPLAN OPTIONS**

We personalise our floorplans. Talk to us about our huge range of ready-to-go design options.

Listed details based on Traditional facade floorplan (illustrated)

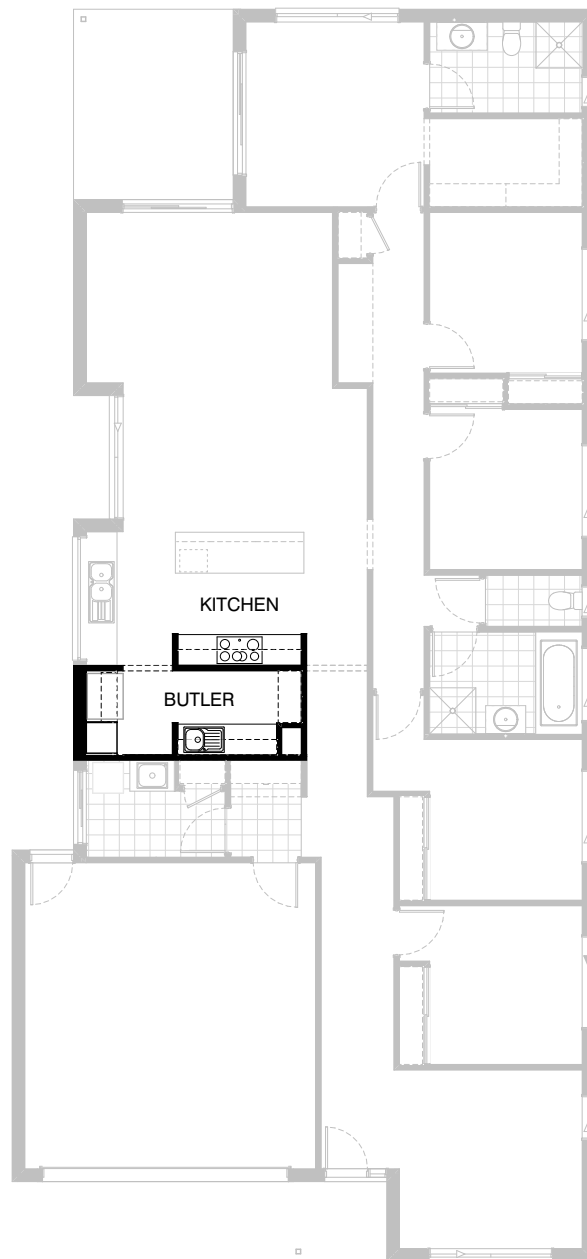
\*Copyright conditions. All photos and illustrations are representative only. Floor plans and specifications may be varied by Burbank without notice, the dimensions are diagrammatic only and a Building Contract with final drawings will display correct dimensions and detail. All designs are the property of Burbank and must not be used, reproduced, copied or varied, wholly or in part without written permission from an authorised Burbank representative. Copyright Burbank Australia (QLD) Pty Ltd. ABN 77 103 014 615. QBCC 1046544.

**Call 13 BURBANK**  
**Visit [burbank.com.au](http://burbank.com.au)**



### Option Kitchen01

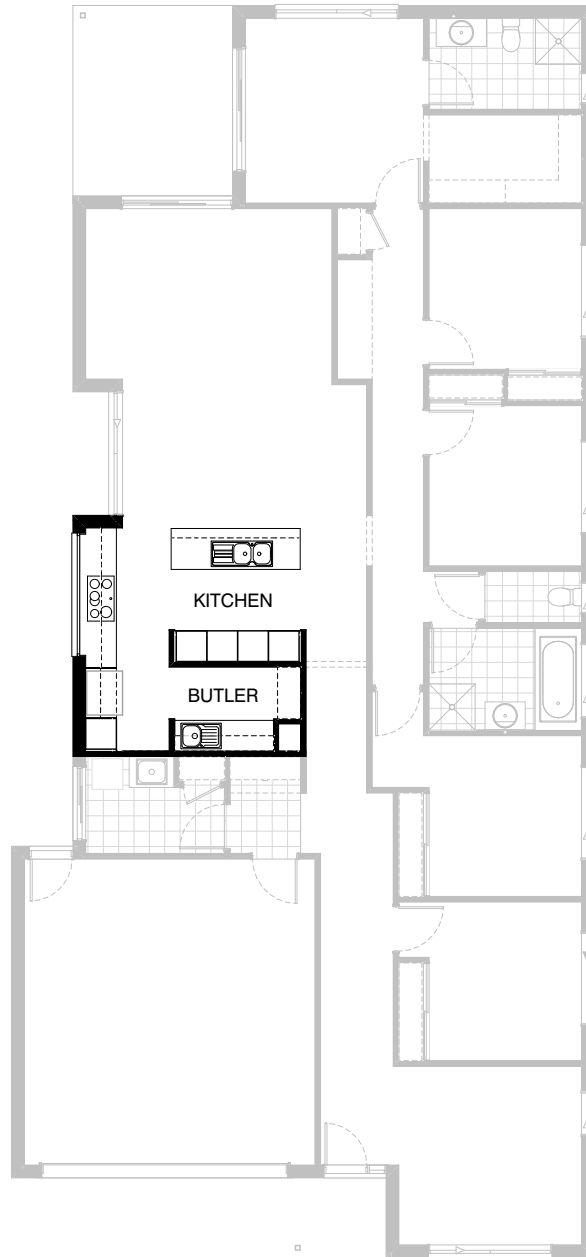
Provide Kitchen upgrade option, including:  
1No. 900mm laminate open shelf over Ref. space.  
2No. 700mm overhead cupboards.



### Option Kitchen02

Provide Kitchen upgrade option with Butler's Pantry in lieu of Walk-in Pantry, including:  
additional laminate benchtop,  
single bowl sink,  
2No. 900mm base cupboards,  
2No. 700mm overhead cupboards,  
1No. 960mm laminate open shelf over Ref. space.  
1No. 600mm laminated pantry unit,  
2No. 300mm deep 60mm thick open shelves,  
plaster-lined void to corner with 1No. of 450mm shelves,  
additional tiled splashback to suit.

Note:  
Option not available with Internal01.



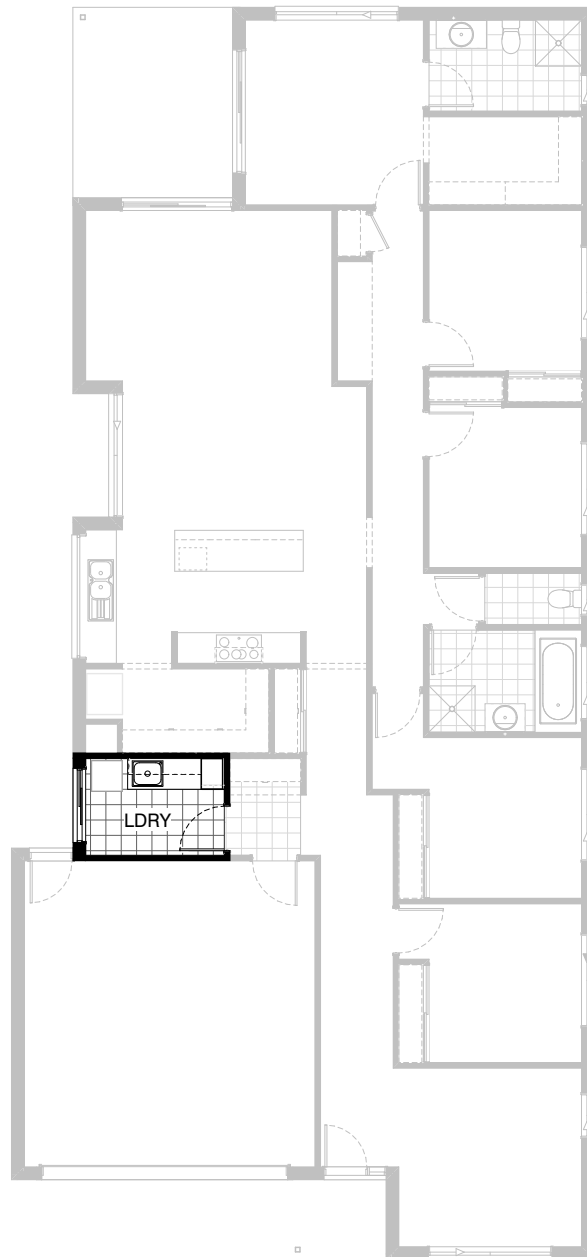
### Option Kitchen03

Provide Kitchen upgrade option with Butler's Pantry in lieu of Walk-in Pantry, including:

**Kitchen:**  
relocated sink and cooktop,  
900mm retractable rangehood,  
900mm cooktop,  
1No. dishwasher provision,  
1No. 450mm drawer unit,  
4No. 900mm base cupboards,  
1No. 450mm base cupboard,  
2No. 600mm laminate oven towers with microwave provisions,  
2No. 900mm overhead cupboards.  
1No. 960mm laminate open shelf over Ref. space.  
3No. 600mm laminated pantry units,  
Provide 514mm x 2410mm aluminium fixed window with no bottom reveal behind cooker in lieu of standard.

**Butler's Pantry:**  
additional laminate benchtop,  
single bowl sink,  
2No. 900mm base cupboards,  
2No. 300mm deep 60mm thick open shelves,  
Provide plaster-lined void to corner with 1No. of 450mm shelves,  
additional tiled splashback to suit.

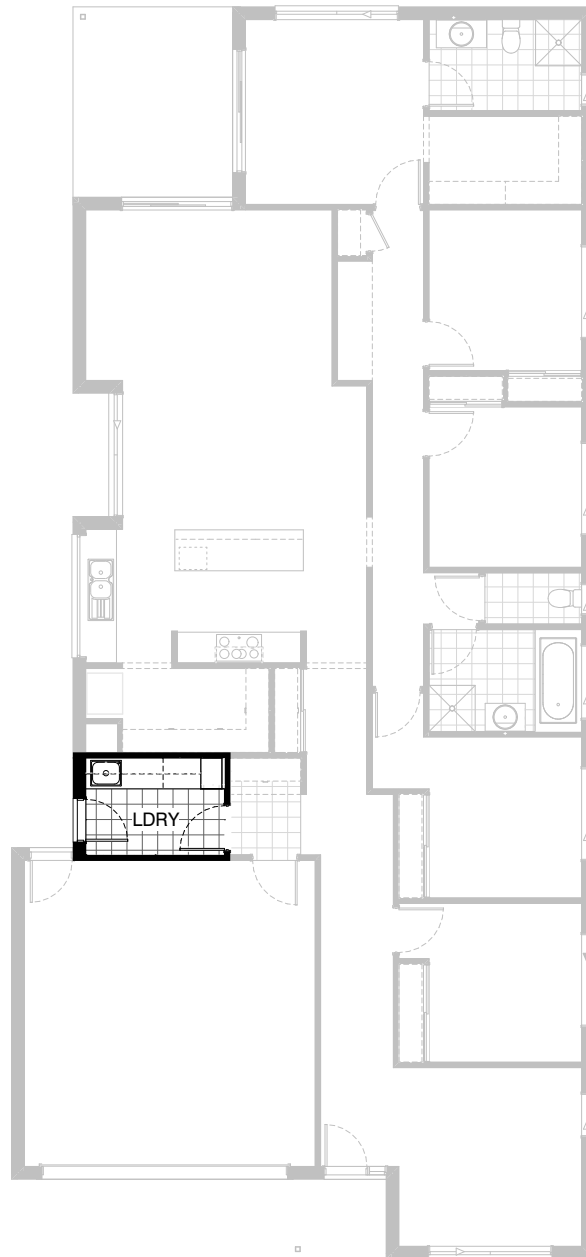
**Note:**  
Option not available with Internal01.



### Option Laundry01

Provide Laundry upgrade option with laminate base and overhead cupboards and stainless steel inset trough, including:  
2No. 700mm base cupboards,  
2No. 700mm overhead cupboards,  
1No. 400mm laminated broom unit,  
additional benchtop and tiled splashback to suit.

Note:  
Option not available with Internal01 & External01.



### Option Laundry02

Provide Laundry upgrade option with laminate base and overhead cupboards and stainless steel inset trough, including:

- 1No. 700mm base cupboard,
- 2No. 700mm overhead cupboards,
- 1No. 800mm overhead cupboard,
- 1No. 400mm laminated broom unit,

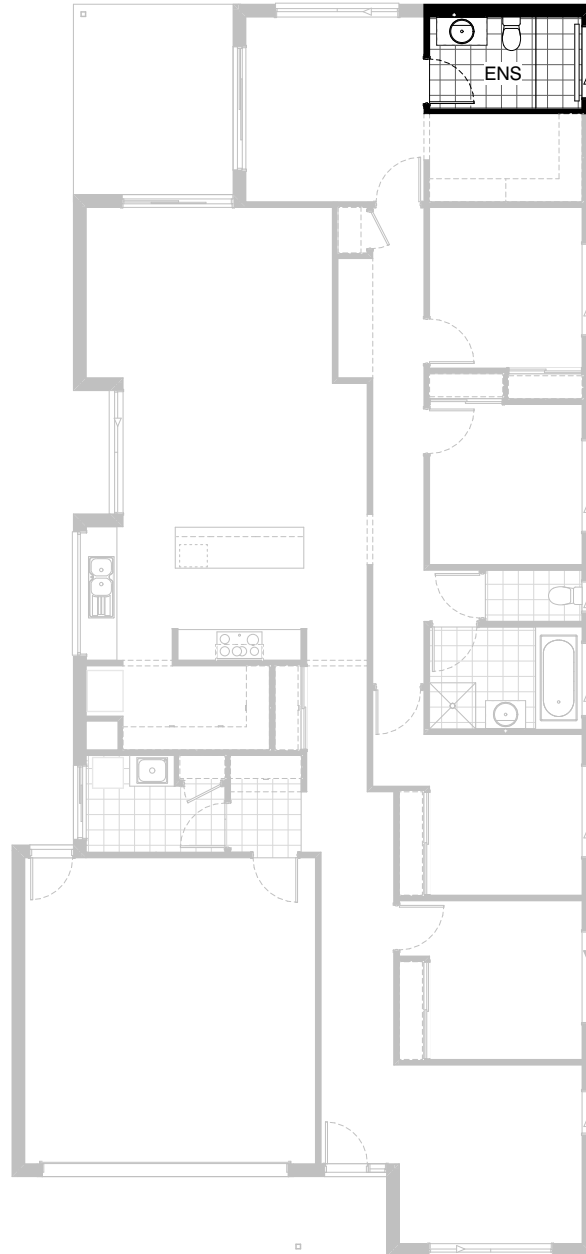
additional benchtop and tiled splashback to suit.

Provide 2105mm x 850mm hinged access door in lieu of standard 2110mm x 1450mm aluminium sliding door.

Option also provides open space under bench for washer and dryer side-by-side and raises the bench height to 950mm from FFL (kicker height raises).

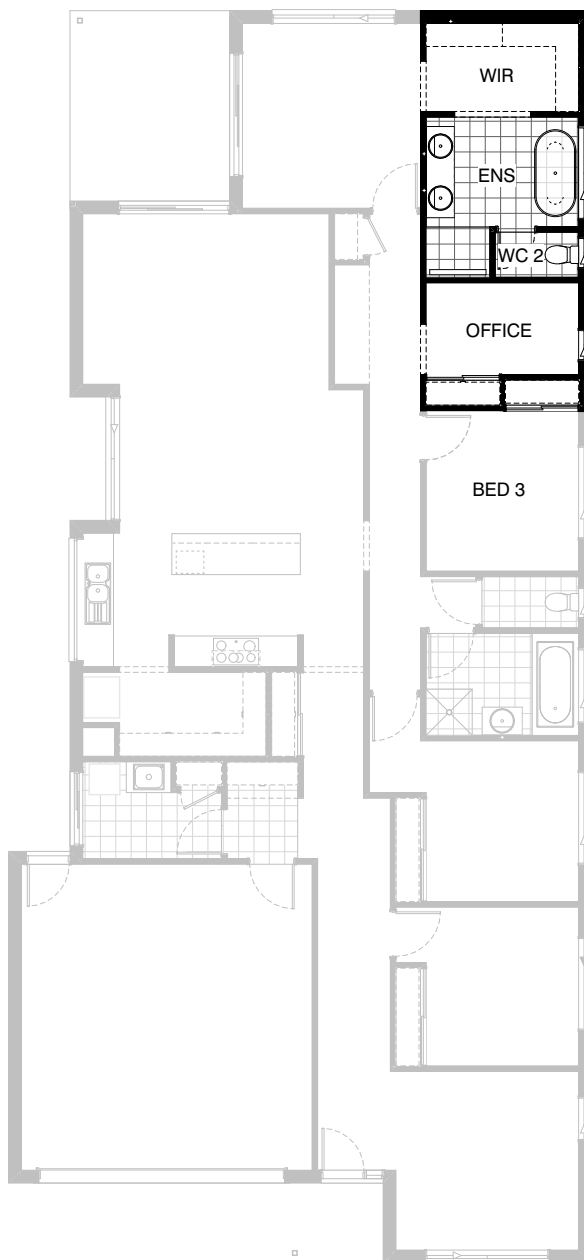
Note:

Option not available with Internal01 & External01.



### Option Ensuite01

Provide Ensuite upgrade option, including:  
1780mm x 900mm tiled shower base  
with grate drain,  
Provide 350mm x 1450mm aluminium  
sliding window over shower  
in lieu of 1800mm x 610mm aluminium  
sliding window.

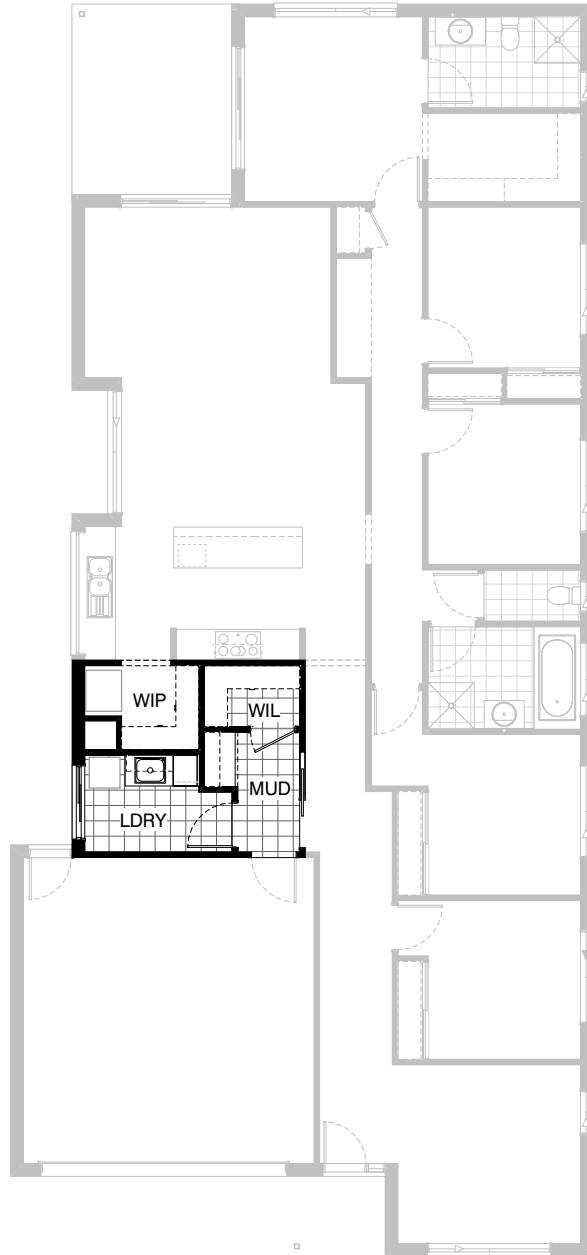


### Option Ensuite02

Provide Ensuite upgrade option with rearranged layout and Home Office in lieu of Bed 2, including:  
 1700mm freestanding bath,  
 1782mm vanity with double basins,  
 1240mm x 900mm tiled shower base with grate drain,  
 enclosed WC with 720mm hinged door.  
 Provide 1027mm x 610mm and  
 1200mm x 1810mm aluminium sliding windows in lieu of standard.  
 Provide 1000mm wide bulkhead opening and 1800mm x 610mm  
 aluminium sliding window to new Office in lieu of standard.  
 Provide 1No. of 450mm shelves in lieu of Robe shelf and hanging rail  
 to create Storage cupboard.  
 Mirror Robe to Bed 3.  
 Option swaps locations of Walk-in Robe and Ensuite and provides  
 access to Ensuite through WIR as shown.

Note:  
 Option not available with Internal04.





**Option Internal01**

Provide floor plan option with Walk-in Linen and built-in joinery to Mud room and Laundry. Walk-in Pantry decreases to accommodate.

Walk-in Linen:

Provide 2No. of 450mm shelves,  
additional 870mm hinged door.

Mud Room:

Provide 600mm deep 32mm thick laminate benchtop,  
1No. 1000mm T.V drawer unit,  
2No. 300mm deep 60mm thick open shelves over.

Provide bulkhead over.

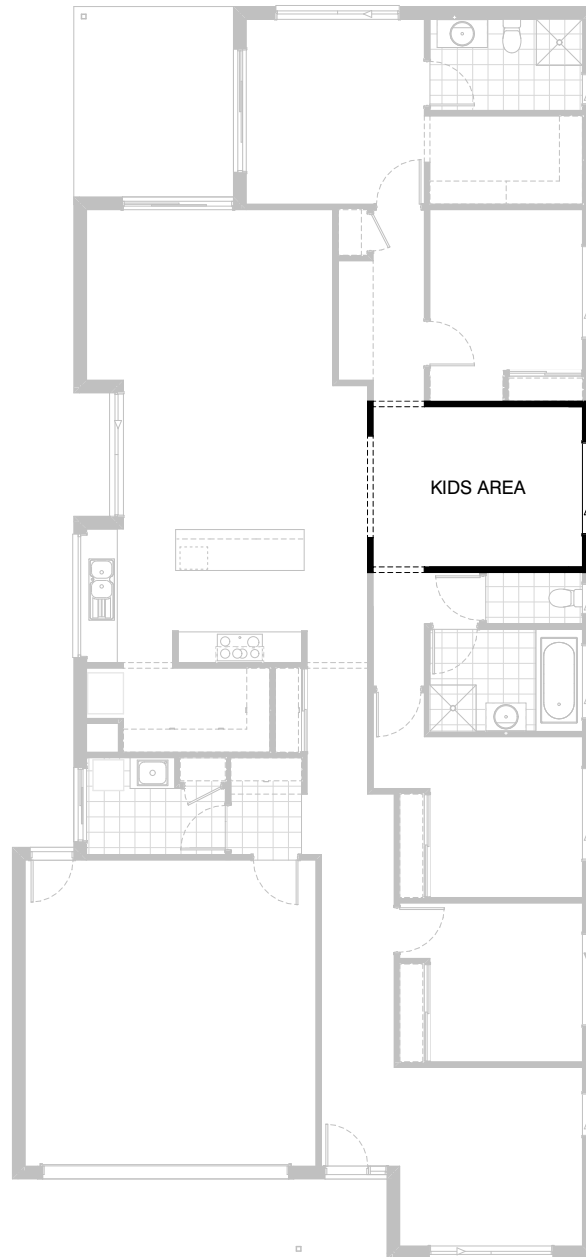
Provide additional 920mm cavity sliding door.

Laundry:

Provide 600mm deep 32mm laminate benchtop with inset trough,  
1No. 900mm base cupboard,  
1No. 900mm overhead cupboard,  
1No. 450mm laminated broom unit.

Note:

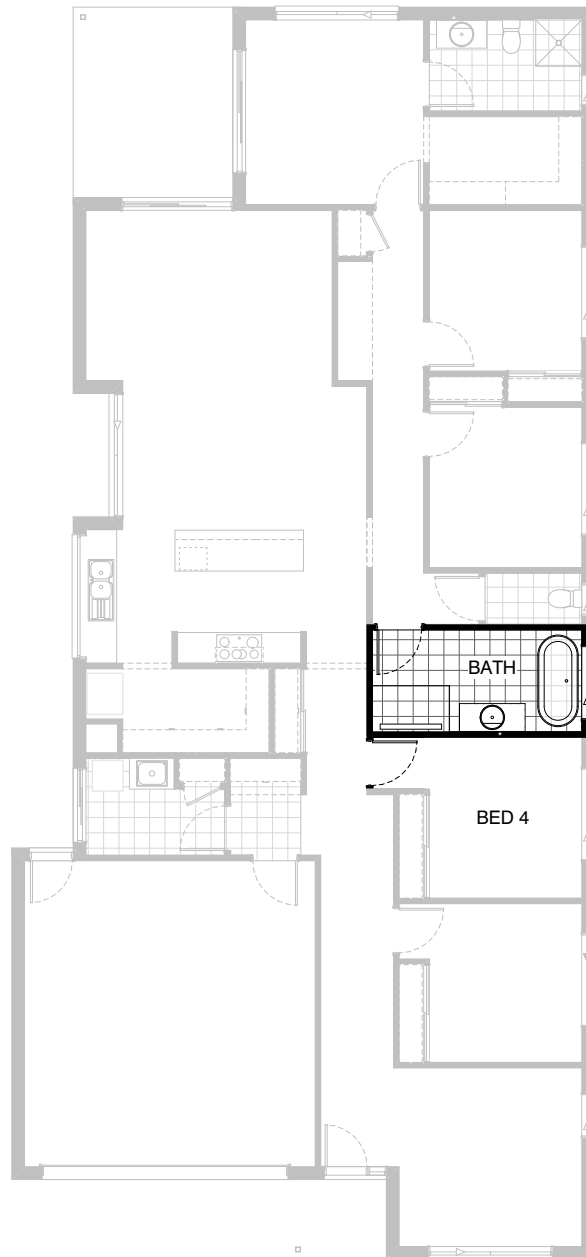
Option not available with Kitchen02, Kitchen03,  
Laundry01, Laundry02, External01.



**Option Internal02**

Provide floor plan option with Kids Area in lieu of Bed 3.  
Remove stud and plaster wall, built-in Robe with sliding doors and hinged access door.  
Provide additional Study Nook to Bed 2 in lieu of Robe.  
Provide 3No. bulkhead openings as shown.

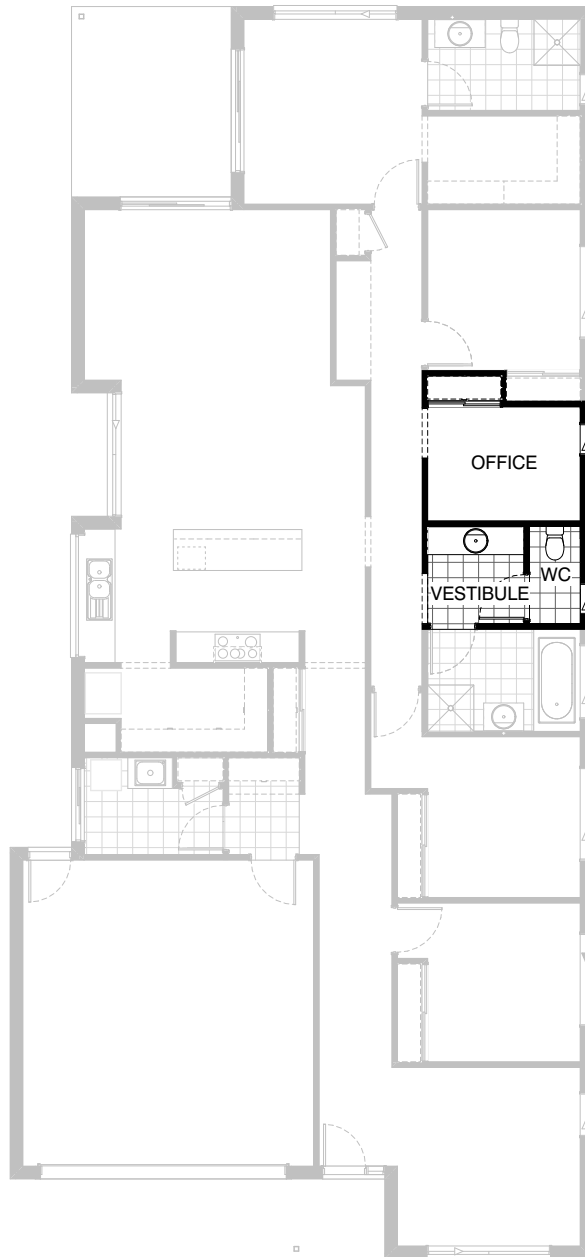
Note:  
Option not available with Internal04.



### Option Internal03

Provide floor plan option with Bathroom upgrade and relocated hinged door to Bed 4, including:  
1700mm freestanding bath,  
1500mm x 900mm tiled shower base with grate drain,  
1282mm vanity with single basin.  
Bed 4 now accessed from Entry Passage.

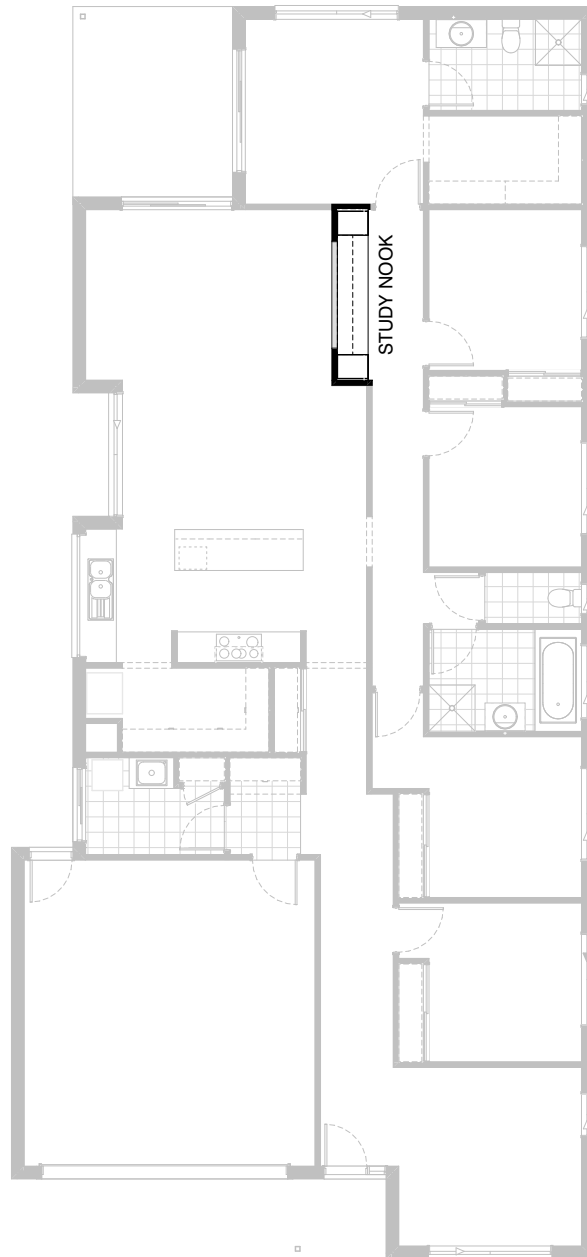
Note:  
Option not available with External01.



**Option Internal04**

Provide floor plan option with vestibule and Home Office in lieu of standard WC and Bedroom, including:  
 1782mm vanity with single basin and 1880mm wide wall-to-wall benchtop in lieu of standard,  
 2No. 1000mm wide bulkhead opening.  
 Provide 1800mm x 610mm aluminium sliding window, 1No. of 450mm shelves to Store in lieu of Robe shelf and hanging rail.

Note:  
 Option not available with Ensuite02, Internal02 & External01.

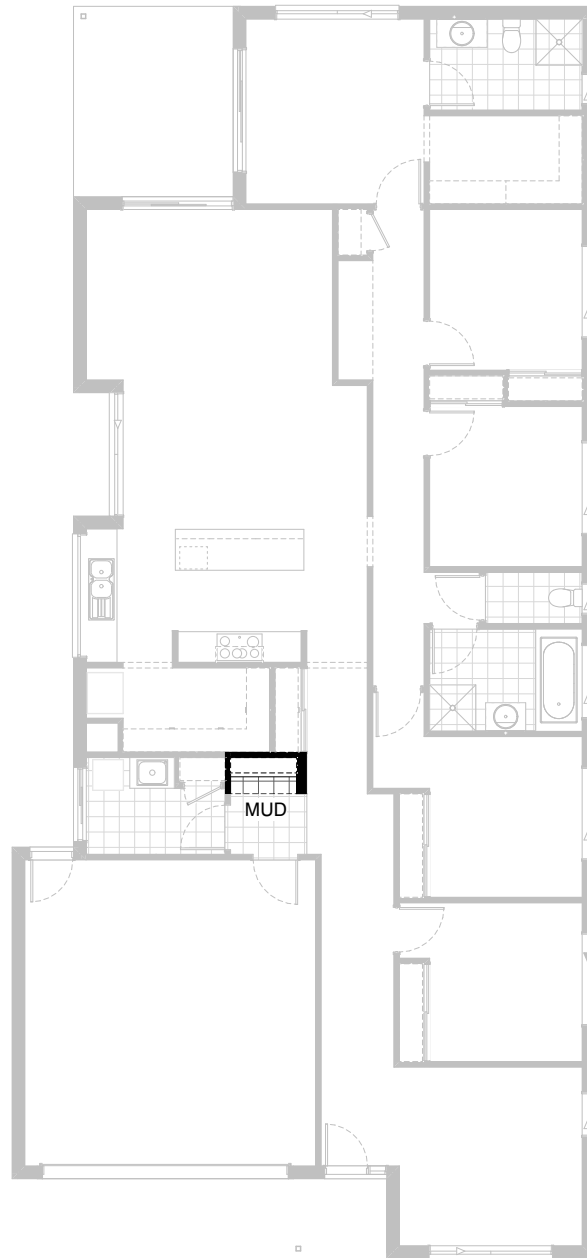


### Option Internal05

Provide built-in joinery option to Study Nook, including:

- 600mm deep 32mm thick laminate benchtop,
  - 1No. 450mm drawer unit under desk,
  - 2No. 450mm laminated Linen units,
  - 2No. 300mm deep 60mm thick open shelves over.
- Provide 600mm x 2100mm cutout to wall with plantation shutters.

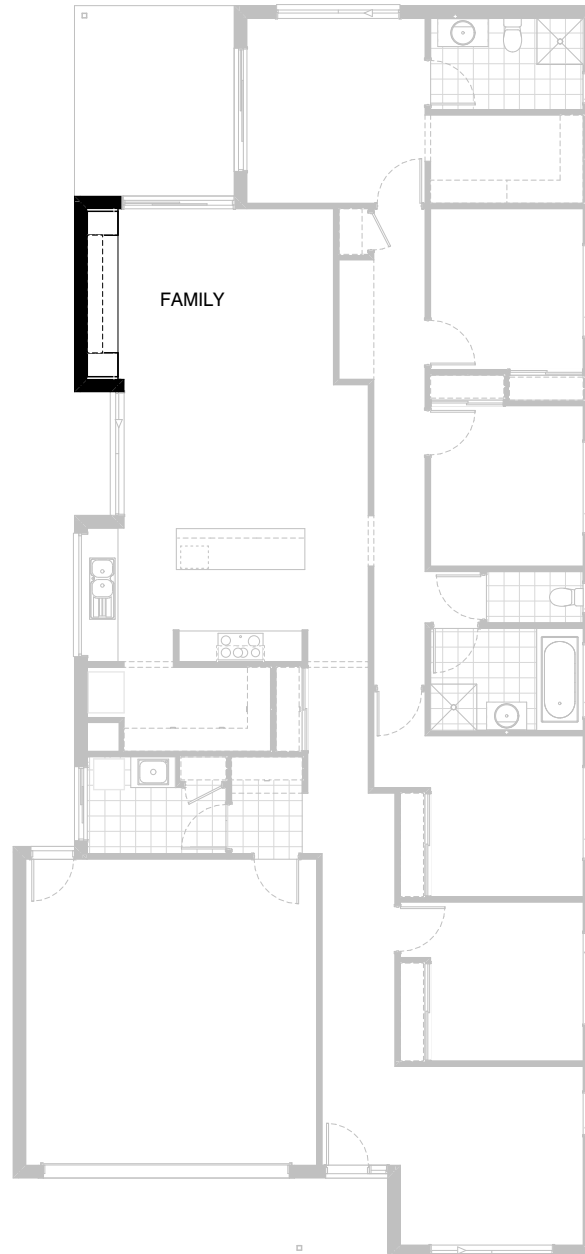
Note:  
Option not available with Internal09.



### Option Internal06

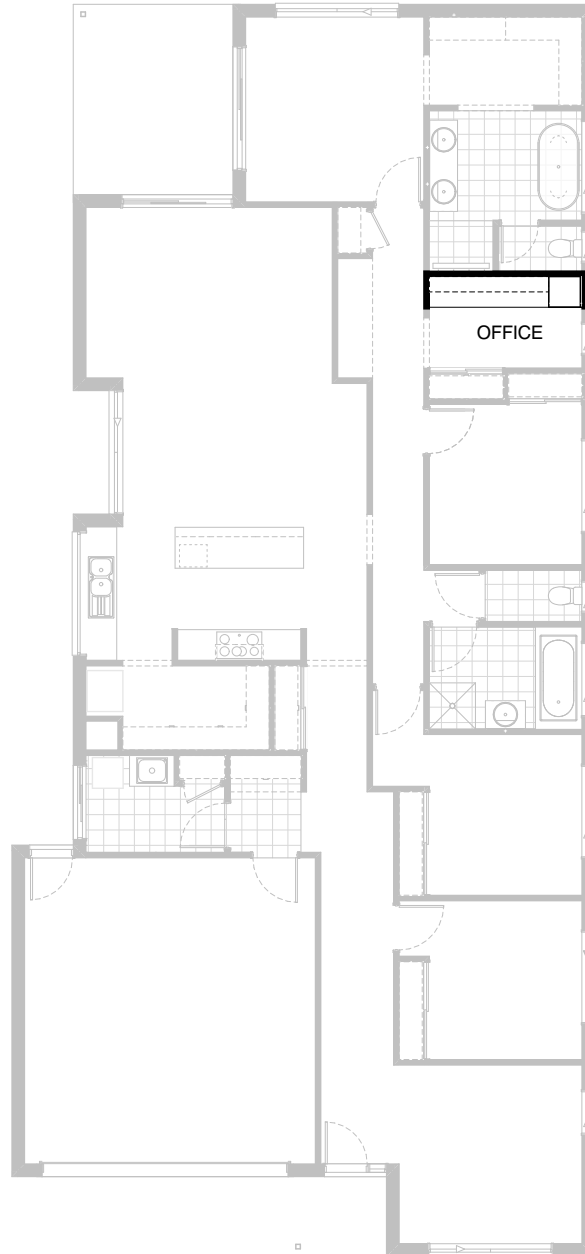
Provide built-in joinery option to Mud in lieu of standard shelving, including:  
600mm deep 32mm thick laminate benchtop,  
2No. 600mm T.V drawer units,  
2No. 300mm deep 60mm thick open shelves over.  
Provide 180mm nib wall with bulkhead over.

Note:  
Option not available with Internal01 or External01.



### Option Internal07

Provide built-in joinery option to Family, including:  
600mm deep 32mm thick laminate benchtop,  
2No. 800mm T.V cupboard units,  
1No. 700mm T.V cupboard unit,  
2No. 450mm laminated Linen units,  
2No. 300mm deep 60mm thick open shelves over.

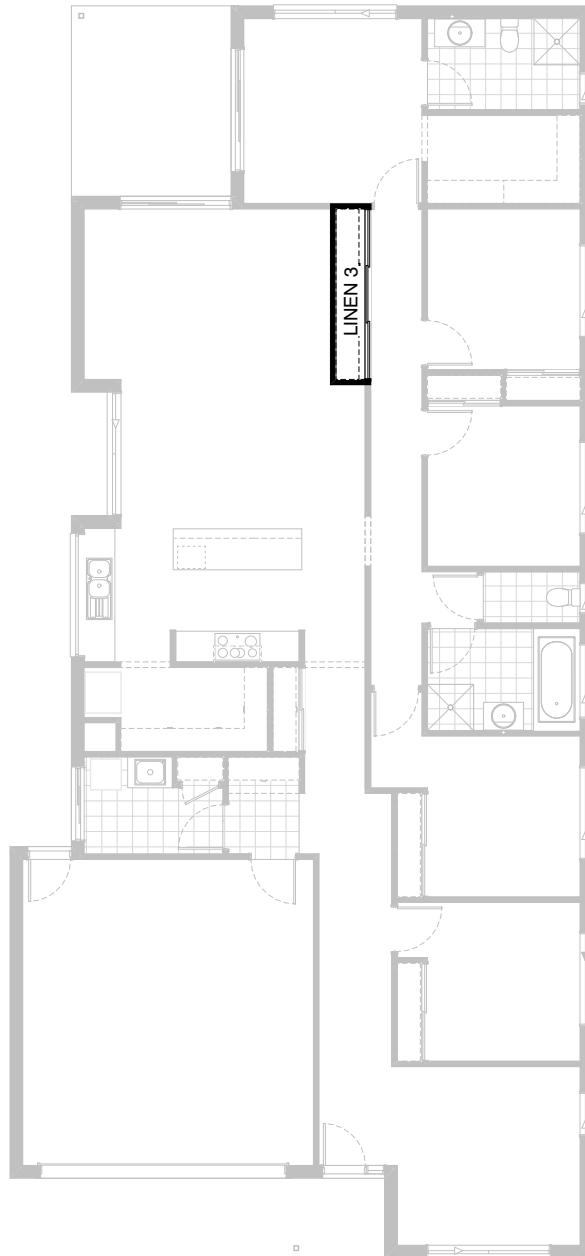


### Option Internal08

Provide built-in joinery option to Office, including:  
600mm deep 32mm thick laminate benchtop,  
1No. 600mm laminated Linen units,  
1No. 600mm laminate drawer unit beneath desk,  
2No. 300mm deep 60mm thick open shelves over.

Note:  
Option only available with Ensuite02 or Internal04.

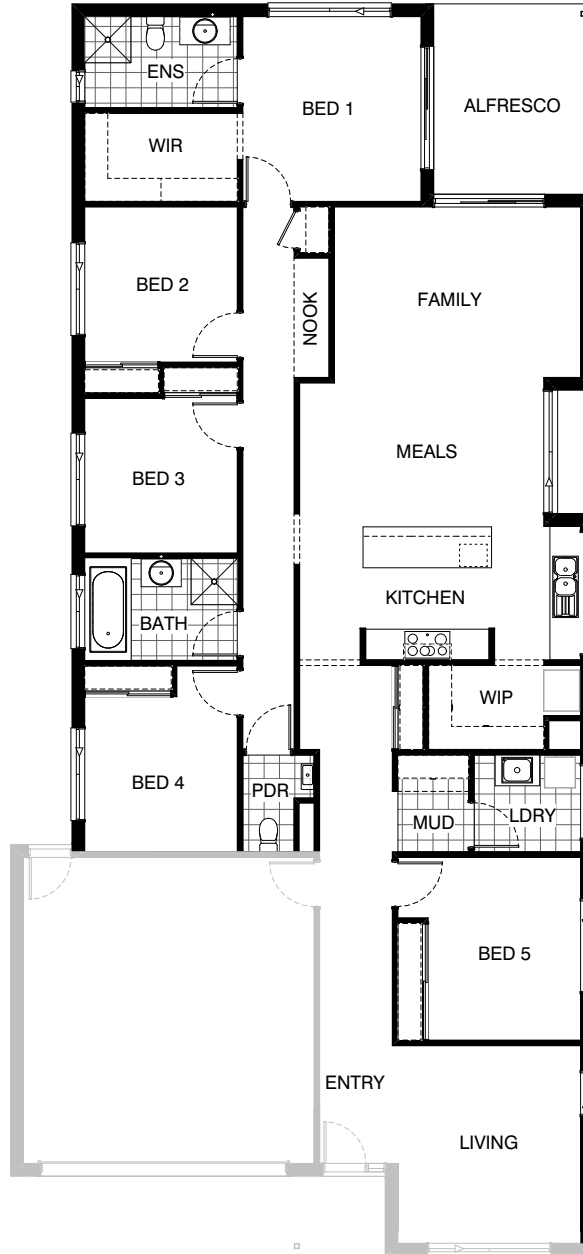
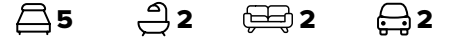




### Option Internal09

Provide option which increases the size of Linen 3 in lieu of Nook, including:  
Robe sliding doors and 450mm shelves.

Note:  
Option not available with Internal05.



**Option External01**

Provide floor plan option which mirrors the rear section of the home as shown.

Note:  
Option not available with Laundry01,  
Laundry02, Internal01, Internal03,  
Internal04 & Internal06.