

FLOORPLAN OPTIONS

We personalise our floorplans. Talk to us about our huge range of ready-to-go design options.

Listed details based on Traditional facade floorplan (illustrated)

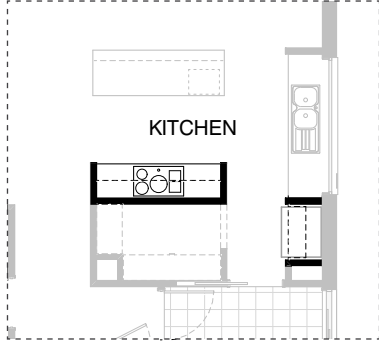
Facades available:

Kingston, Kingsley, Bradshaw	
Bradbury, Nouveau, Traditional	
Urban	
Overall home width	11,750mm
Overall home length	17,270mm

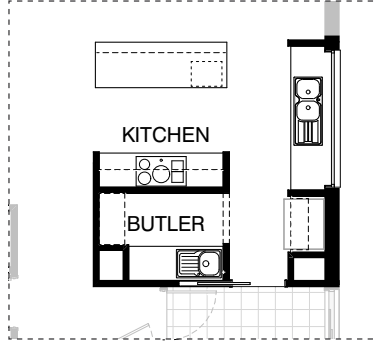
Grd Floor	128.2m ²	12.7sq
First Floor	127.9m ²	13.8sq
Garage	37.9m ²	4.1sq
Porch	3.5m ²	0.4sq
Alfresco	10.4m ²	1.2sq
Total	298.3m²	32.1sq

*Copyright conditions. All photos and illustrations are representative only. Floor plans and specifications may be varied by Burbank without notice, the dimensions are diagrammatic only and a Building Contract with final drawings will display correct dimensions and detail. All designs are the property of Burbank and must not be used, reproduced, copied or varied, wholly or in part without written permission from an authorised Burbank representative. Copyright Burbank Australia (QLD) Pty Ltd. ABN 77 103 014 615. QBCC 1046544.

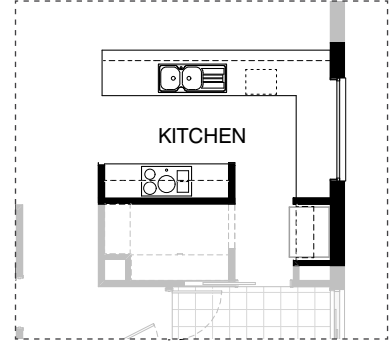
Call 13 BURBANK
Visit burbank.com.au



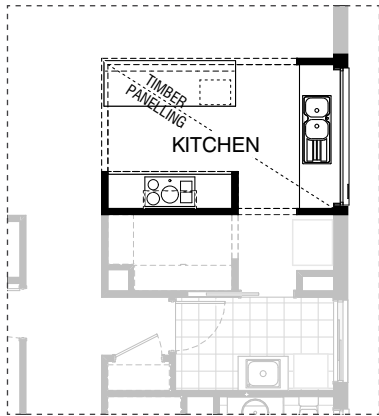
K01



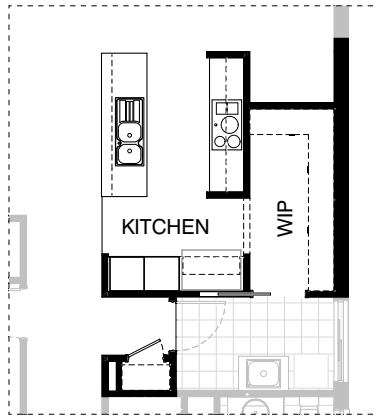
K02



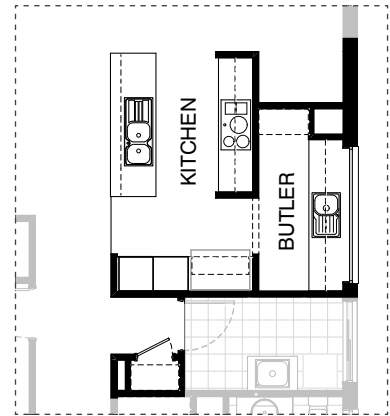
K03



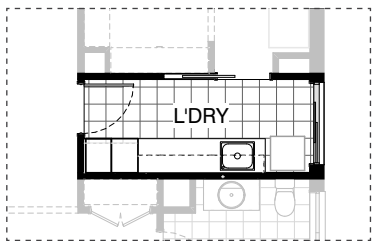
K04



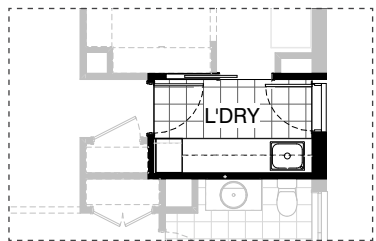
K05



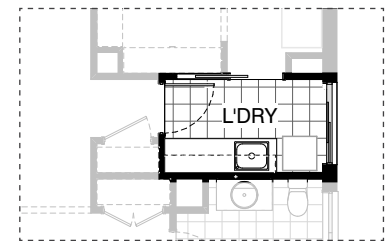
K06



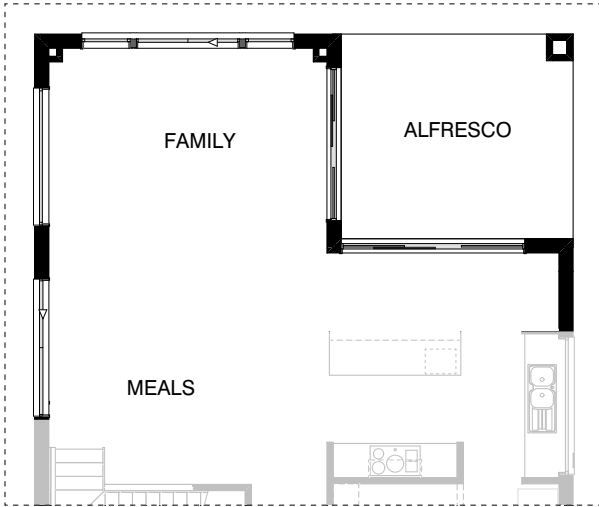
L01



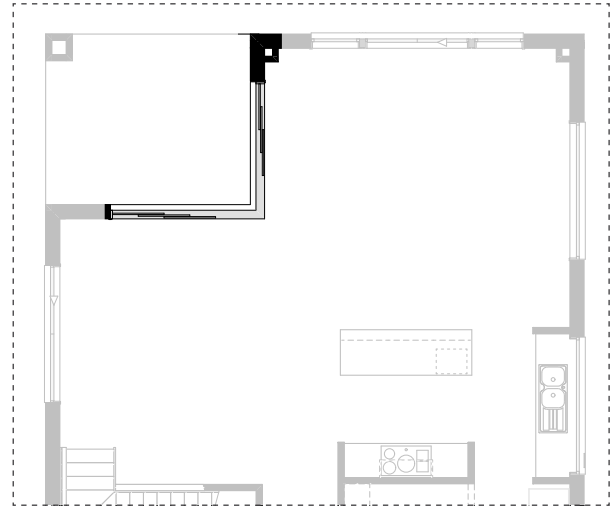
L02



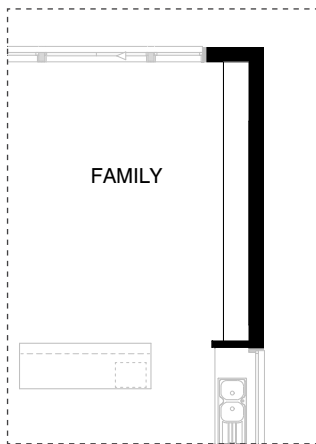
L03



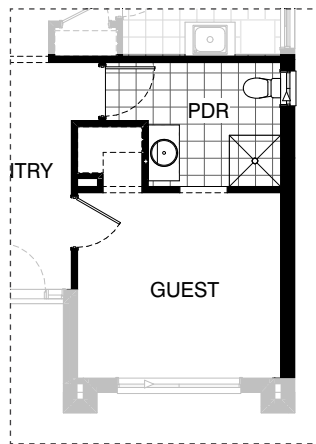
EX01



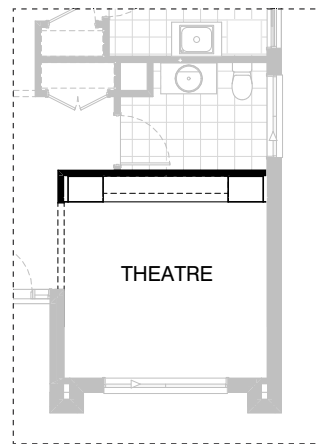
EX02



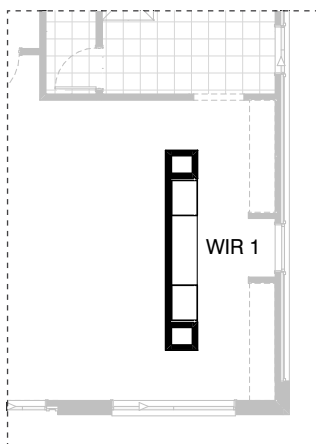
IN01



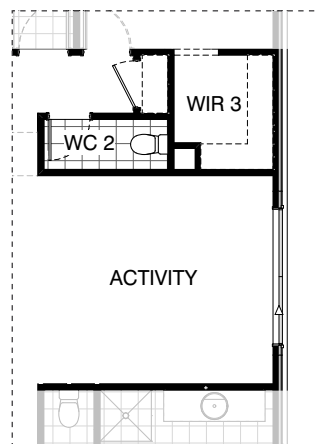
IN02



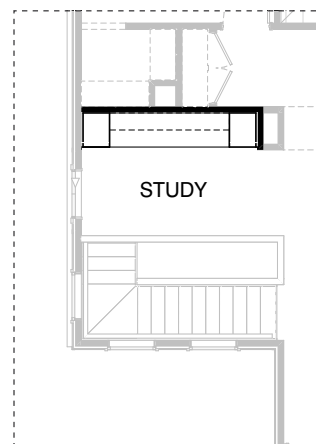
IN03



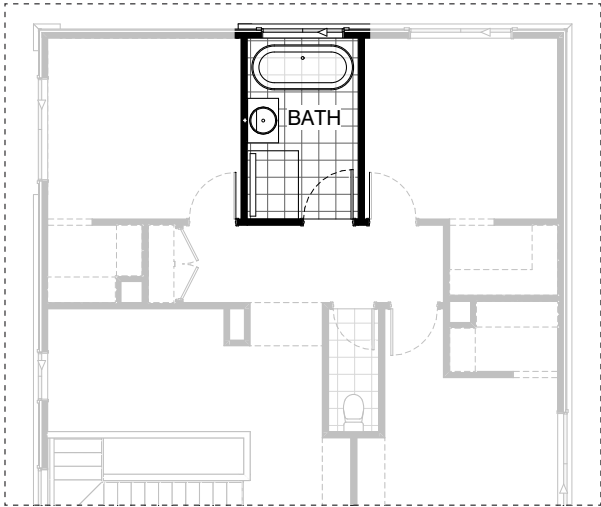
IN04



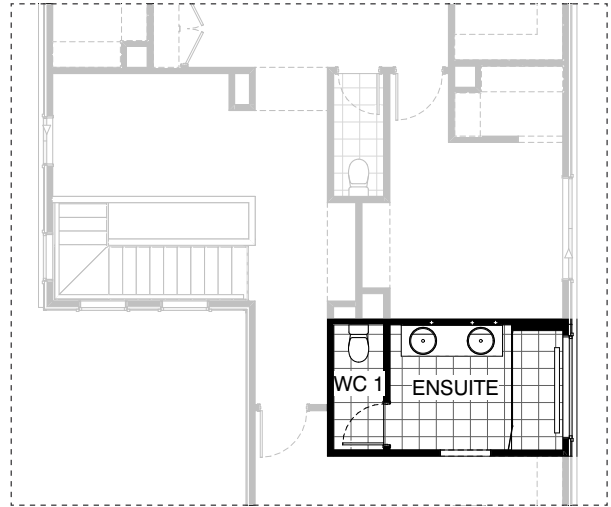
IN05



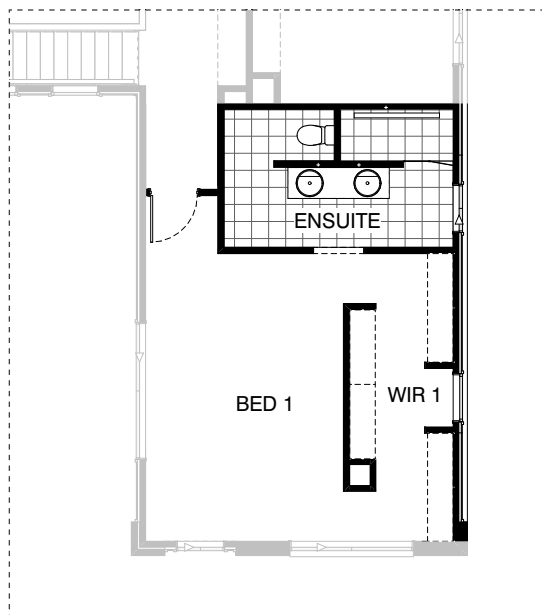
IN06



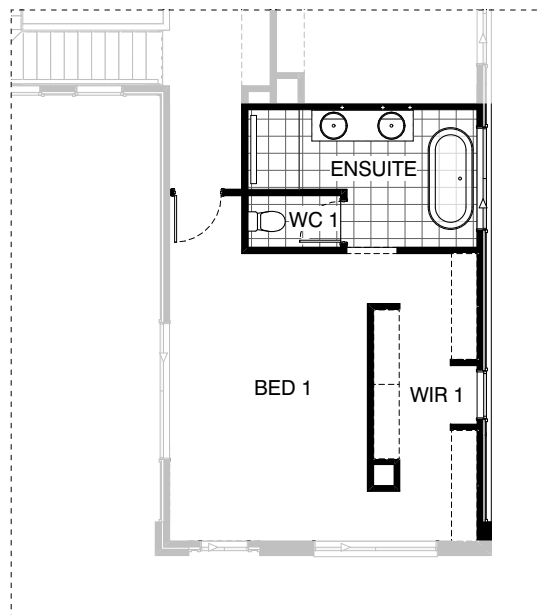
IN07



EN01



EN02



EN03

OPTION DESCRIPTIONS**K01 - Kitchen Option 01**

Provide Kitchen upgrade option which adds 2No. 600mm overhead cupboards and 1No. open shelf above Ref space. Island bench and sink bench unchanged.

K02 - Kitchen Option 02

Provide Butler's Pantry upgrade option which adds 2No. 800mm base cupboards, 1No. single bowl sink with drainer, additional tiled splashback and benchtop to suit.
This option decreases the Family by 140mm in width and increases the void space near the fridge by 140mm.

K03 - Kitchen Option 03

Provide L-shaped Kitchen upgrade option which adds 2No. 600mm overhead cupboards and 1No. open shelf above Ref space.
L-shaped bench includes
1No. 450mm drawer unit,
1No. 450mm base cupboard,
1No. 900mm base cupboard,
1No. dishwasher provision,
1No. microwave provision with pot drawer,
1No. 900mm corner base cupboard,
2No. 700mm base cupboards with additional benchtop and tiled splashback to suit. Option also provides 1200mm x 1810mm aluminium fixed window with no bottom reveal in lieu of standard. Note: Option not available with Internal01.

K04 - Kitchen Option 04

Provide Kitchen bulkhead and timber ceiling upgrade option.
Option only available with standard Kitchen, Kitchen01 and Kitchen03.

K05 - Kitchen Option 05

Provide Kitchen upgrade option with rearranged layout including 2No. 700mm base cupboards, 1No. 900mm base cupboard, 2No. 700mm overhead cupboards with additional benchtop and tiled splashback to suit.
1No. open shelf above Ref space and 2No. oven towers with 600mm ovens and microwave provisions. Island bench includes
1No. 450mm drawer unit,
1No. dishwasher provision,
1No. 900mm base cupboard and
1No. 450mm base cupboard.
Option also provides a Study Nook area.
Decreases the Family by 120mm in width and delete existing window to Kitchen.
Provide relocated plumbing stack to Linen closet as shown and provide 620mm hinged door in lieu of standard.
Note: Option not available with Internal01.

K06 - Kitchen Option 06

Provide Kitchen upgrade option with rearranged layout including 2No. 700mm base cupboards, 1No. 900mm base cupboard, 2No. 700mm overhead cupboards with additional benchtop and tiled splashback to suit.
1No. 1000mm open shelf above Ref space and 2No. oven towers with 600mm ovens and microwave provisions.
Island bench includes
1No. 450mm drawer unit, 1No. dishwasher provision,
1No. 900mm base cupboard and 1No. 450mm base cupboard.
Butlers Pantry includes
2No. 900mm base cupboards,
1No. 800mm base cupboard,
2No. 900mm overhead cupboards,
1No. 800mm overhead cupboard,
1No. single bowl sink with drainer, additional tiled splashback and benchtop to suit.
Option also provides a Study Nook area, 514mm x 2410mm aluminium fixed window with no bottom reveal in lieu of standard, decreases the Family by 120mm in width and delete cavity sliding door to WIP / Laundry.
Provide relocated plumbing stack to Linen closet as shown and provide 620mm hinged door in lieu of standard.
Note: Option not available with Internal01.

L01 - Laundry Option 01

Provide Laundry upgrade option including laminate cupboards and inset trough including
2No. 900mm base cupboards,
1No. 400mm base cupboard,
2No. 900mm overhead cupboards,
1No. 400mm overhead cupboard,
1No. 450mm laminated Linen unit,
1No. 450mm laminated Broom unit,
additional benchtop and tiled splashback to suit.
Extend Laundry by deleting Linen cupboard from Passage.

L02 - Laundry Option 02

Provide Laundry upgrade option with laminate cupboards and stainless steel inset trough, including:
1No. 800mm base cupboard,
2No. 800mm overhead cupboards,
1No. 600mm overhead cupboard,
1No. 450mm laminated Broom unit,
additional benchtop and tiled splashback to suit.
Raise bench height to 950mm to allow for washer and dryer to be stored under side-by-side.
Option also provides 2105mm x 850mm aluminium hinged external access door in lieu of sliding door.

L03 - Laundry Option 03

Provide Laundry upgrade option including laminate cupboards and stainless steel inset trough including 2No. 800mm base cupboards, 2No. 800mm overhead cupboards, 1No. 300mm base cupboard, 1No. 300mm overhead cupboard, additional benchtop and tiled splashback to suit.

EX01 - External Option 01

Provide mirrored Family and Alfresco option.
This option changes the shape of the Alfresco and provides 2110mm x 3230mm aluminium sliding door in lieu of standard Relocates plumbing stack as shown with matching void to other side of Family.
Note: Option not available with Internal01.
Provide 2107mm - 2410mm x 2710mm corner sliding door in lieu of 2No standard sliding doors.
Relocate plumbing stack as shown and provide matching void to other side of Family.

EX02 - External Option 02

Provide 2107mm - 2410mm x 2710mm corner sliding door in lieu of 2No standard sliding doors.
Relocate plumbing stack as shown and provide matching void to other side of Family.

IN01 - Internal Option 01

Provide built-in joinery upgrade option to Family with 450mm deep 32mm thick laminate benchtop,
3No. 1000mm T.V cabinets and
2No. 900mm T.V cabinet
514mm x 2410mm aluminium sliding window removed. Option only available with standard Kitchen and Kitchen01.

IN02 - Internal Option 02

Provide Guest Bed option with
2-way PDR / Ensuite in lieu of Living.
Option includes 870mm hinged door in lieu of bulkhead opening and built-in WIR with bulkhead opening.
Rearrange PDR to accommodate additional 900mm x 900mm tiled shower base, double stud wall and
850mm Bulkhead to PDR / Ensuite.
Coats to Entry passage to be deleted.
Provide 1027mm x 610mm aluminium sliding window in lieu of standard.
Note: Option not available with Internal03.

IN03 - Internal Option 03

Provide built-in joinery to Living, including: 450mm deep 32mm laminate benchtop,
2No. 700mm T.V cabinet cupboards,
1No. 800mm T.V cabinet cupboard,
2No. 300mm deep 60mm thick open shelves, 2No. 600mm full height laminated cupboards.
Note: Option not available with Internal02.

IN04 - Internal Option 04

Provide built-in joinery upgrade option to WIR including:
450mm deep 32mm laminate benchtop, 2No. 600mm laminate robe cupboards, with 3No. drawer units.

IN05 - Internal Option 05

Provide floor plan option with Activity room to First floor in lieu of Bed 4, including:
removing stud and plaster wall and 2No. Nooks,
relocated WC with 720mm hinged door,
larger Walk-in Robe to Bed 3,
additional built-in Linen cupboard with 820mm hinged door, 1027mm x 2410mm aluminium sliding window in lieu of standard.

IN06 - Internal Option 06

Provide Built-in Joinery upgrade option to Study with 600mm deep 32mm laminate benchtop,
2No. 450mm laminated cupboards,
2No. 300mm deep 60mm thick open shelves over.

IN07 - Internal Option 07

Provide Bathroom upgrade option, including:
1700mm freestanding bath,
1200mm x 900mm tiled shower base with grate drain, 782mm vanity with single basin.

EN01 - Ensuite Option 01

Provide Ensuite upgrade option with rearranged layout including 2100mm x 900mm wall to wall tiled shower base with grate drain in lieu of standard,
1No. 1782mm wide vanity unit with double basins and
350mm x 1810mm aluminium fixed window in lieu of standard.

EN02 - Ensuite Option 02

Provide Ensuite upgrade option with rearranged layout including 1980mm x 900mm wall to wall tiled shower base with grate drain. 1No. 1782mm wide vanity unit with double basins
and relocated WC behind wall.
Option takes 220mm of depth from Bed 1 and WIR to accommodate.

EN03 - Ensuite Option 03

Provide Ensuite upgrade option with rearranged layout including 1400mm x 900mm wall to wall tiled shower base with grate drain, 1No. 1782mm wide vanity unit with double basins,
1No. 1780mm freestanding bath and
1200mm x 1810mm aluminium sliding window in lieu of standard. Option takes 220mm of depth from Bed 1 and WIR to accommodate.