

Facades available:

Coastal, Selta, Kingston, Nouveau,
Scarborough, Traditional, York

Overall home width 12.35m

Overall home length 17.75m

Residence	147.3m ²	15.9sq
Garage	37.9m ²	4.1sq
Porch	3.1m ²	0.3sq
Alfresco	10.1m ²	1.1sq
Total	198.4m²	21.4sq

FLOORPLAN OPTIONS

We personalise our floorplans. Talk to us about our huge range of ready-to-go design options.

Listed details based on Traditional facade floorplan (illustrated)

*Copyright conditions. All photos and illustrations are representative only. Floor plans and specifications may be varied by Burbank without notice, the dimensions are diagrammatic only and a Building Contract with final drawings will display correct dimensions and detail. All designs are the property of Burbank and must not be used, reproduced, copied or varied, wholly or in part without written permission from an authorised Burbank representative. Copyright Burbank Australia (QLD) Pty Ltd. ABN 77 103 014 615. QBCC 1046544.

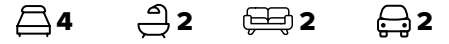
Call 13 BURBANK
Visit burbank.com.au



Option Kitchen01

Provide Galley-style Kitchen option with Walk-in Pantry, including:

- 1No. 900mm retractable rangehood,
- 1No. 900mm underbench oven and cooktop,
- 1No. 450mm drawer unit,
- 1No. dishwasher provision,
- 1No. microwave provision with pot drawer,
- 1No. 900mm base cupboard,
- 2No. 600mm base cupboards,
- 1No. 450mm base cupboard,
- 2No. 600mm overhead cupboards,
- 1No. open shelf over refrigerator space,
- 2No. run of 4x450mm shelving,
- 1No. run of 4x300mm shelving,
- 32mm laminate benchtop and tiled splashback to suit.



Option Kitchen02

Provide Kitchen option including:
 1No. 900mm retractable rangehood,
 1No. 900mm cooktop,
 1No. 450mm drawer unit,
 1No. dishwasher provision,
 2No. 600mm laminate oven towers
 with microwave provisions,
 2No. 900mm base cupboards,
 2No. 700mm base cupboards,
 1No. 350mm base cupboard,
 2No. 700mm overhead cupboards,
 1No. open shelf over refrigerator space,
 2No. 600mm laminated Pantry unit,
 32mm laminate benchtop and tiled splashback to suit.



Option Laundry01

Provide Laundry upgrade with laminate base and overhead cupboards and laminated inset trough, including:

- 1No. 900mm base cupboard,
- 1No. 900mm overhead cupboard,
- 32mm laminate benchtop and tiled splashback to suit.

Note:
Option not available with Internal04.



Option Ensuite01

Provide Ensuite upgrade option including:
1780mm x 900mm wall-to-wall tiled shower
base in lieu of standard.



Option Ensuite02

Provide Ensuite upgrade option including:
1No. 1782mm vanity with double basins,
1840mm x 900mm tiled shower base,
relocated WC,
1No. 820mm cavity sliding door.

Note:
Option decreases size of Bed 1 by 150mm to accommodate.



Option Ensuite03

Provide Ensuite and walk-in robe upgrade option in lieu of Office, including:

- 1No. 820mm cavity sliding door,
- 1No. 1782mm vanity with double basins,
- 1No. 2100mm x 900mm wall-to-wall tiled shower base with
- 1No. 350mm x 1810mm aluminium fixed window over,
- enclosed WC with 1No. 820mm cavity sliding door,
- 1No. 1027mm x 610 aluminium sliding window.

Provide extended 1No. run of 4x450mm shelving.
Option adds 300mm to Bed 1.
Option removes Office and built-in linen cupboard.

Note:
Option not available with Internal04 & Internal05.



Option Ensuite04

Provide Ensuite and walk-in robe upgrade option in lieu of Office, including:

- 1No. 2082mm vanity with double basins including
 - 1 row tiling beneath mirror to suit wall-to-wall benchtop including returns in lieu of standard,
 - 1No. 1300mm x 980mm wall-to-wall tiled shower base in lieu of standard,
 - 1No. 1780mm free-standing bath,
 - 1No. 1200mm x 1810mm aluminium sliding window over bath in lieu of standard,
 - enclosed WC with 1No. 720mm hinged door,
 - 1No. 1027mm x 610mm aluminium sliding window.
- Provide extended 450mm shelves to WIR.

Option adds 250mm to Bed 1.
Option removes Office and built-in linen cupboard.

Note:
Option not available with Internal04 & Internal05.



Option Internal01

Provide built-in joinery option to Nook to create Mud room, including:
450mm deep 32mm thick laminate benchtop,
2No. 600mm T.V drawer units,
2No. 300mm deep 60mm thick open shelves over.
Provide 180mm nib wall with bulkhead over.

Note:
Option not available with Internal03, Internal04, Internal07 & External01.



Option Internal02

Provide Activity in lieu of Bed 4, including:
additional 1No. 2110mm x 2170mm aluminium sliding door,
remove built-in robe and 1No. 870mm hinged door and
provide 2No. bulkhead openings.
Provide walk-in robe to Bed 3 in lieu of standard built-in Robe.



Option Internal03

Provide additional Living area to the centre of the home in lieu of Bed 2.
Remove WIR 2 and 1No. 870mm hinged door and provide bulkhead opening.
Provide built-in Linen cupboard with 870mm hinged door and 4No. 450mm shelves.
Provide 1No. 2057mm x 1210mm aluminium sliding window.

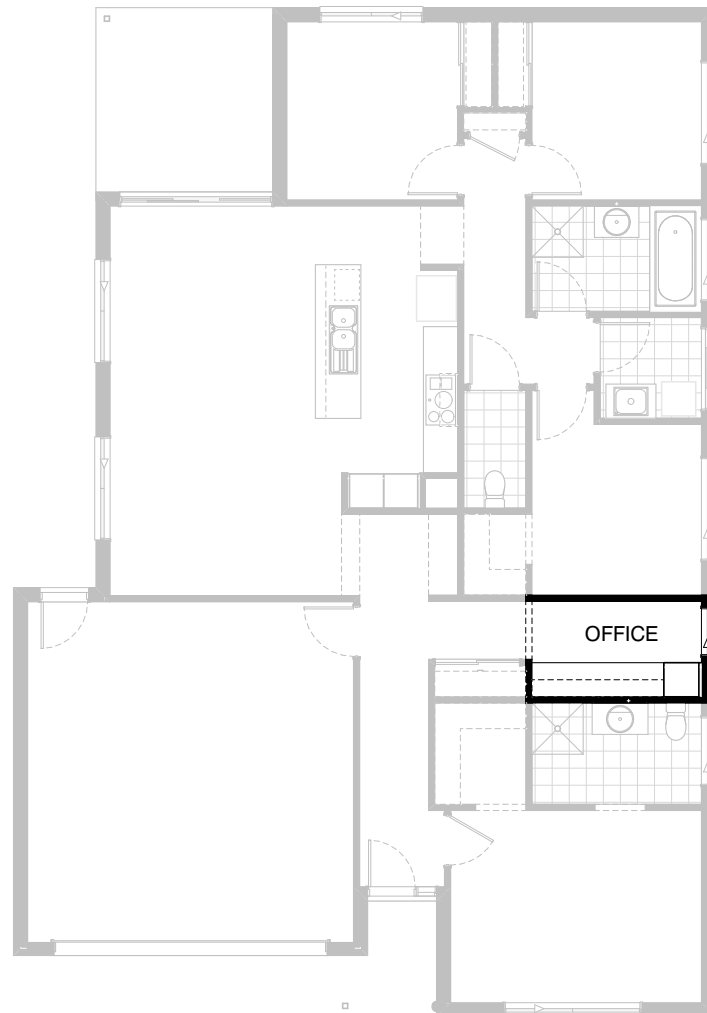
Note:
Option not available with Internal01, Internal04 & Internal07.



Option Internal04

Provide additional Living and Study Nook to the centre of the home in lieu of Bed 2 and Office.
 Remove WIR 2 and 1No. 870mm hinged door and provide bulkhead opening.
 Remove built-in linen cupboard.
 Relocate Laundry and WC and provide built-in joinery to Laundry, including:
 laminated base and overhead cupboards and laminated steel inset trough,
 2No. 700mm base cupboards,
 2No. 700mm overhead cupboards,
 1No. 700mm laminated Linen unit,
 32mm laminate benchtop and tiled splashback to suit.
 Provide built-in joinery to Study Nook, including:
 600mm deep 32mm thick laminate desk,
 1No. 450mm desk drawer unit,
 2No. 300mm deep 60mm thick open shelves, bulkhead over.
 1No. 2057mm x 2410mm aluminium sliding window to Living.
 1No. 1027mm x 610mm aluminium sliding window to WC.
 Option decreases Entry / Passage by 110mm to accommodate.

Note:
 Option not available with Ensuite03, Ensuite04, Internal01, Internal03, Internal05,
 Internal07 & External01.

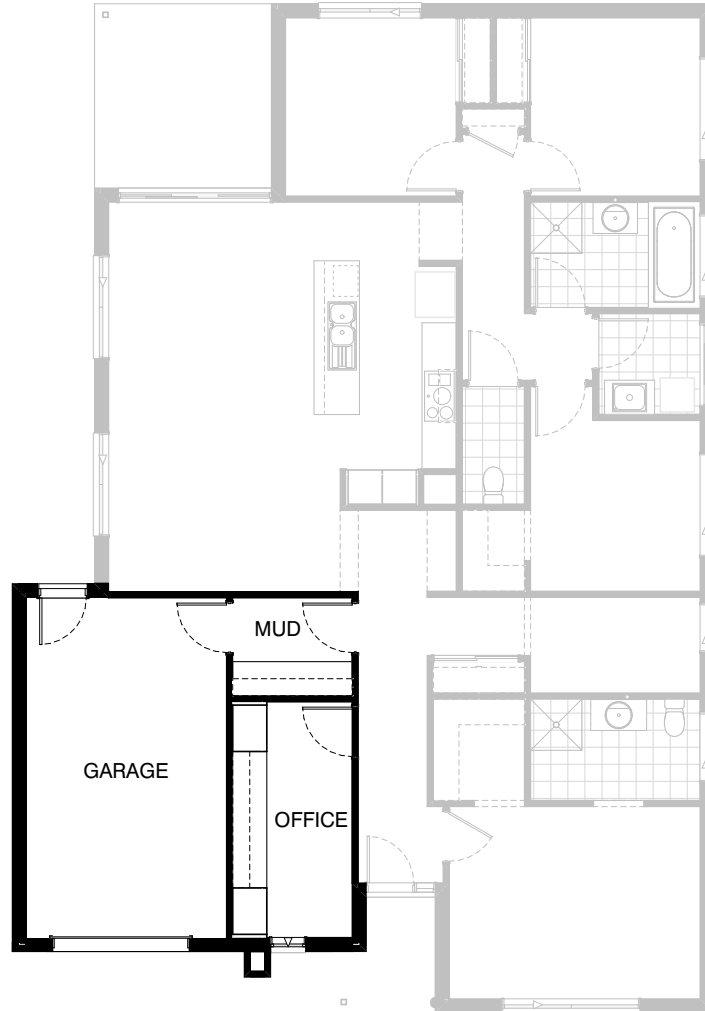


Option Internal05

Provide built-in joinery to Office, including:
600mm deep 32mm thick laminate desk,
1No. 450mm drawer unit under desk,
1No. 600mm laminated cupboard,
2No. 300mm deep 60mm thick open shelves.

Note:

Option not available with Ensuite03, Ensuite04 & Internal04.



Option Internal06

Provide Office / Mud room option with single car Garage in lieu of double Garage, including:

Tiled Mud room with 1No. 870mm hinged door,
1No. 600mm deep 32mm thick laminate benchtop,
2No. 800mm base cupboards,
1No. 400mm base cupboard,
2No. 300mm deep 60mm thick open shelves.

Office built-in joinery includes:

1No. 600mm deep 32mm thick laminate desk,
2No. 800mm laminated cupboards,
2No. 300mm deep 60mm thick open shelves over desk,
1No. 870mm hinged door,
1No. 2057mm x 610mm aluminium feature awning window.

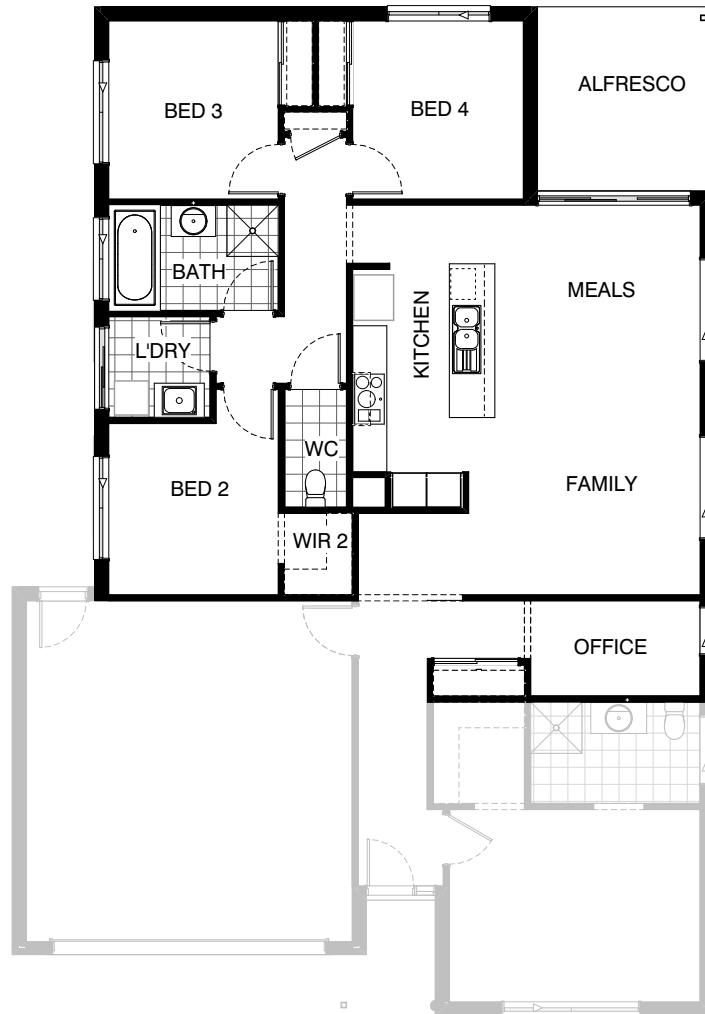
Provide 1No. 2410mm wide Garage door to new single Garage in lieu of standard with 450mm x 470mm engaged pier to project under eaves.



Option Internal07

Provide Walk-in linen to Passage and built-in robe to Bed 2, including:
2No. run of 4x450mm shelving and additional
1No. 820mm hinged door to WIL,
sliding robe doors to Robe.

Note:
Option not available with Internal01, Internal03, Internal04
& External01.



Option External01

Provide floor plan option which mirrors the rear section of the home.

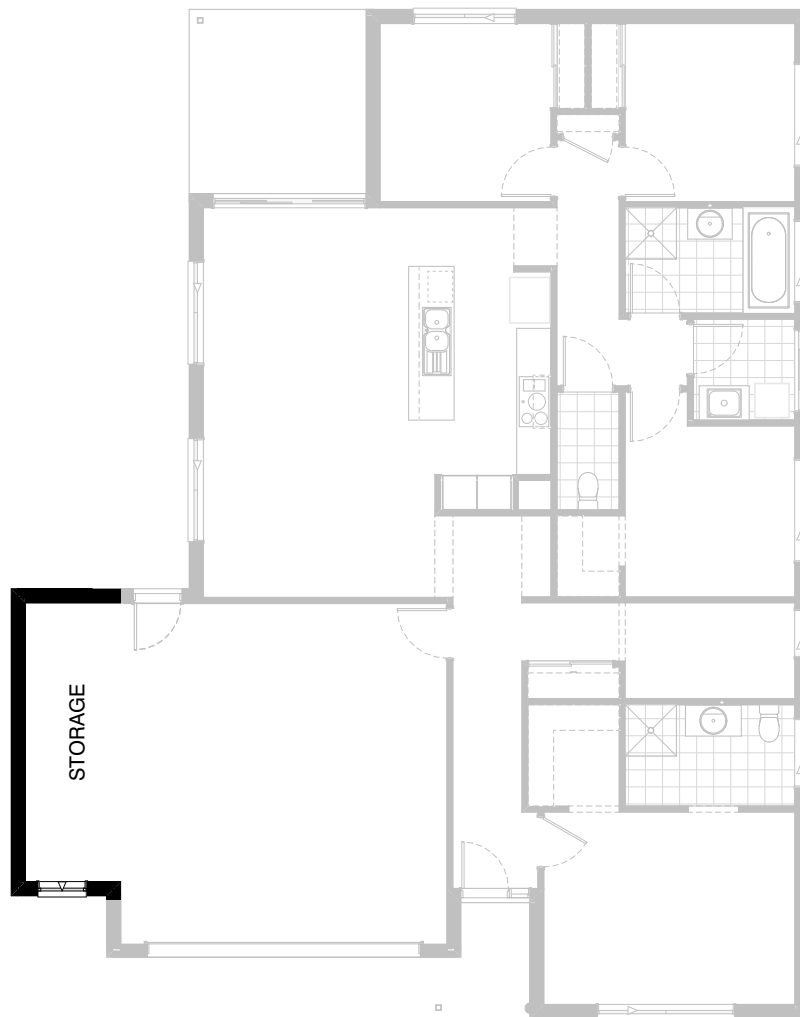
Note:
Option not available with Internal01, Internal04 & Internal07.



Option External02

Provide Grand Alfresco option including,
4No. 470mm x 470mm brick piers,
structural concrete slab and extended tile roof over.
Provide aluminium corner sliding door,
1No. 2107mm - 2170mm x 2710mm in lieu of standard sliding door &
1No. 1200mm x 2710mm aluminium bi-fold window in lieu of standard.
Remove bulkhead to Activity wall as shown.
Increases length by 3240mm.
Increases area by 21.40m²

Note:
Option only available with Internal02



Option Garage01

Provide extension to Garage to create additional Storage area including additional 1No. 2057mm x 850mm aluminium awning feature window.
Increases width by 1680mm.
Increases area by 9.07m²