

**Facades available:**

Sheffield, Aster, Eastwood,
Hartford, Lancaster, Leawood,
Newbury, Wiltshire
<b>Overall home width</b> <b>13.55m</b>
<b>Overall home length</b> <b>20.99m</b>

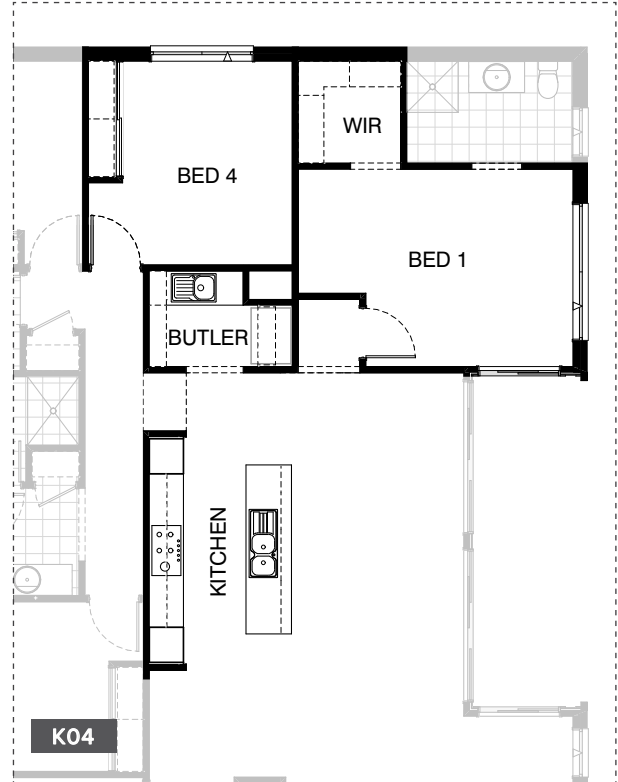
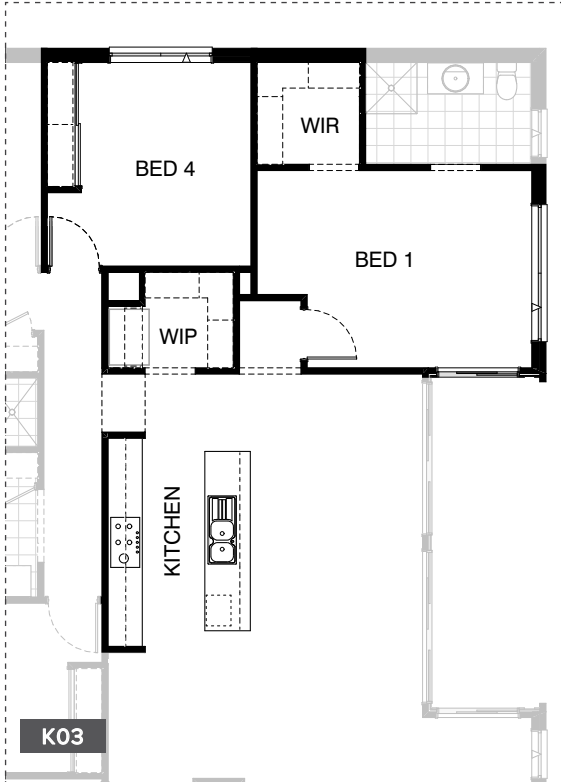
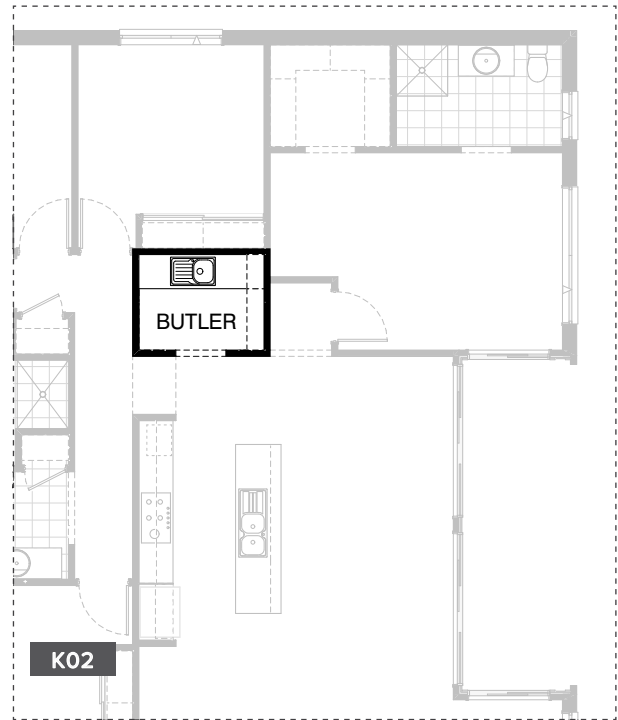
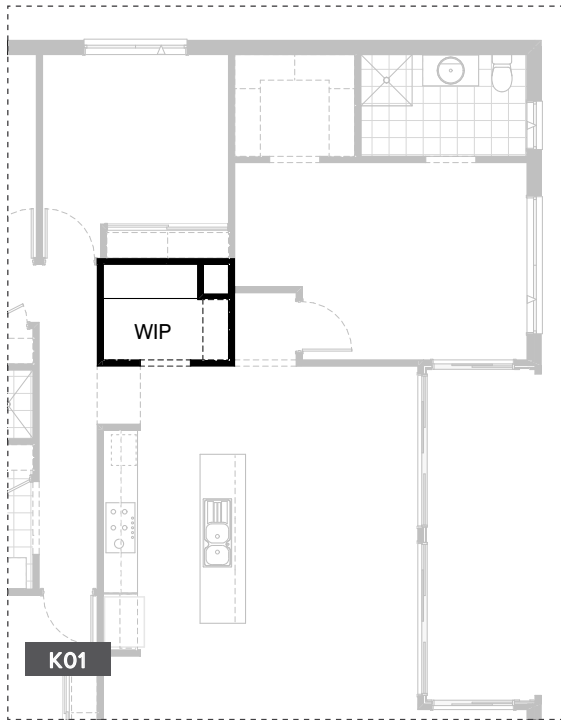
Residence	194.8m <sup>2</sup>	21.0sq
Garage	36.4m <sup>2</sup>	3.9sq
Porch	5.3m <sup>2</sup>	0.6sq
<b>Total</b>	<b>236.5m<sup>2</sup></b>	<b>25.5sq</b>

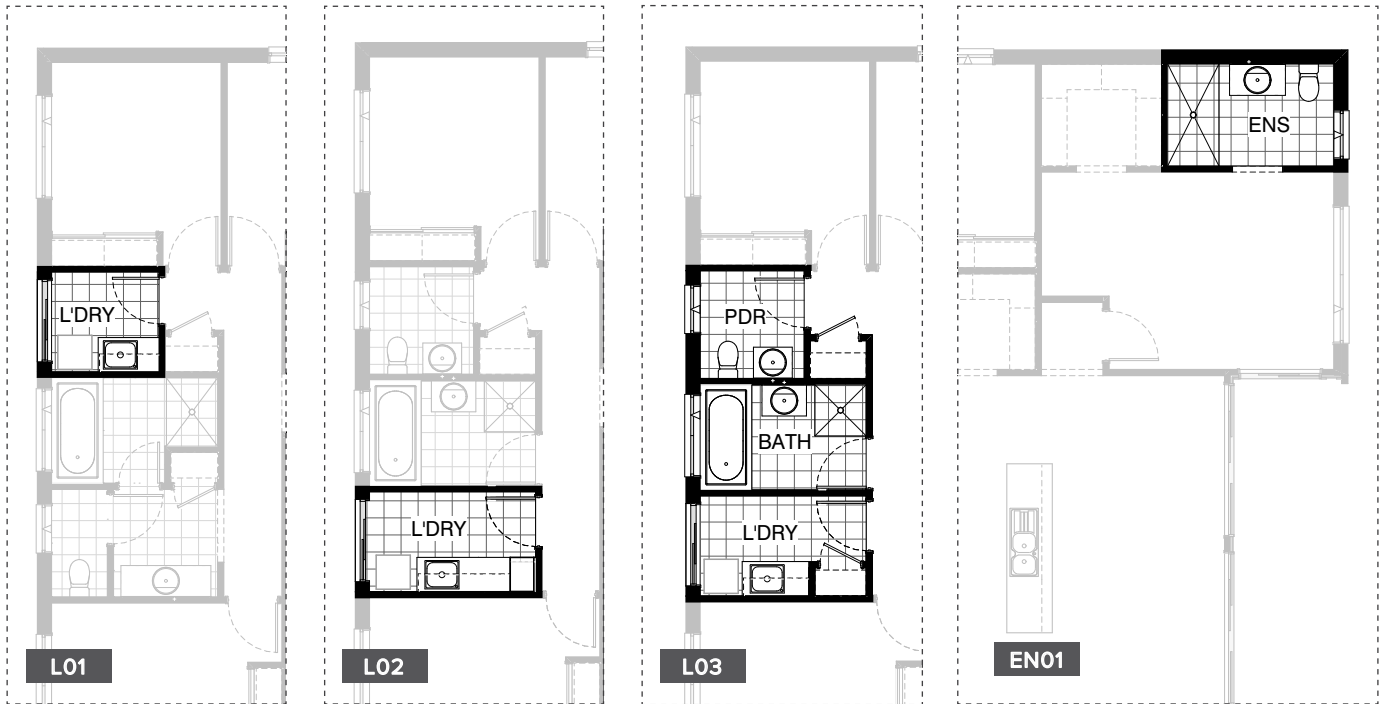
**FLOORPLAN OPTIONS**

We personalise our floorplans. Talk to us about our huge range of ready-to-go design options or simply visit [www.burbank.com.au/south-australia](http://www.burbank.com.au/south-australia) for more details.

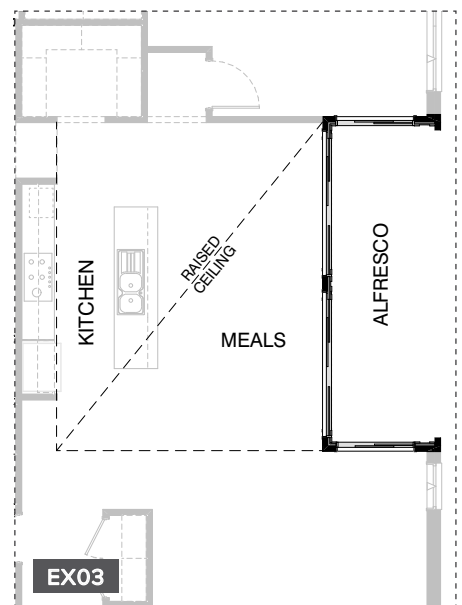
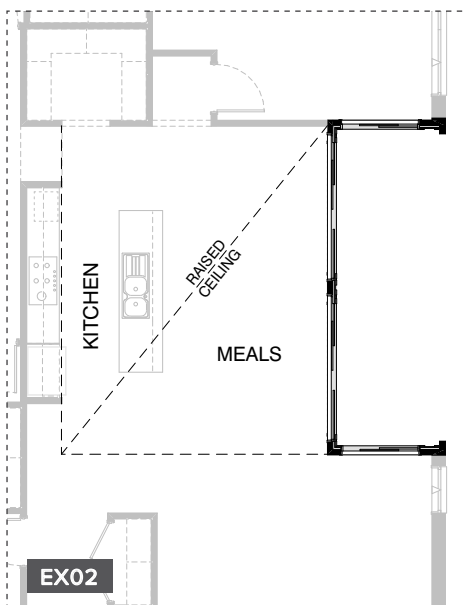
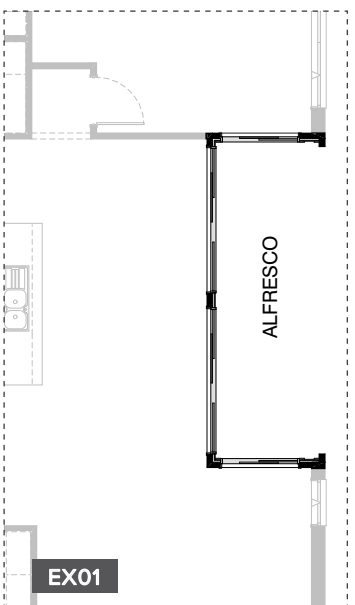
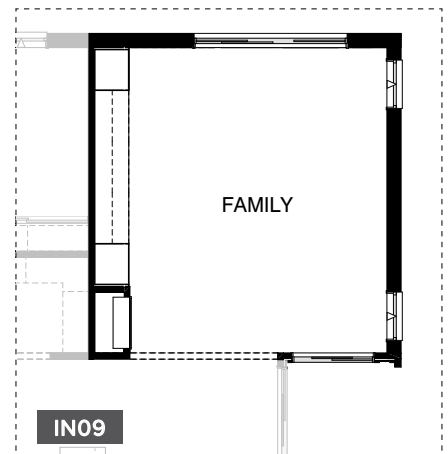
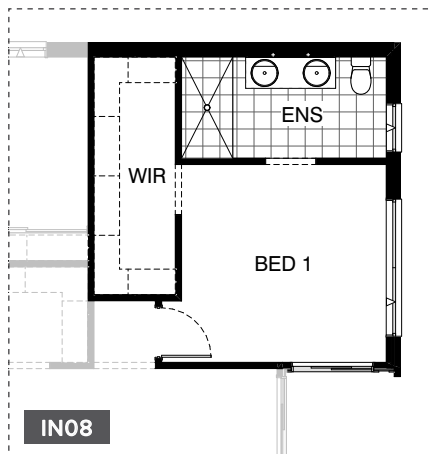
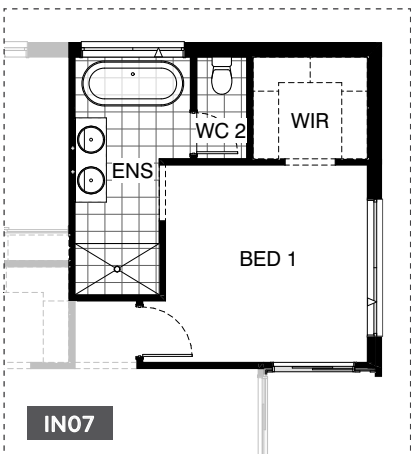
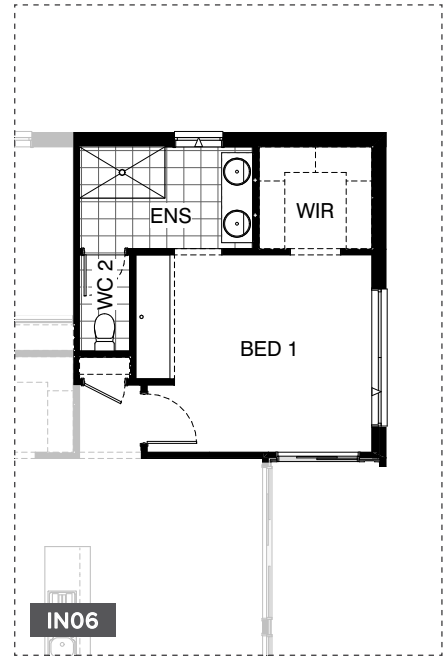
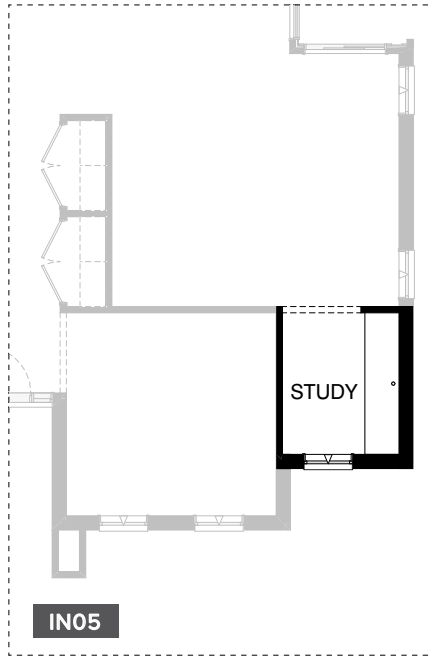
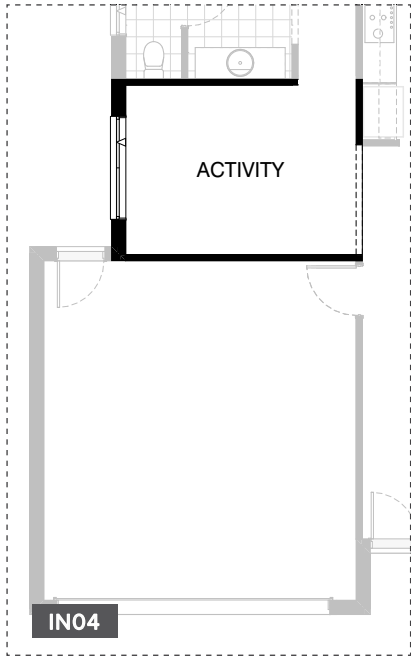
Listed details based on Sheffield facade floorplan (illustrated)

\*Copyright conditions. All photos and illustrations are representative only. Floor plans and specifications may be varied by Burbank without notice, the dimensions are diagrammatic only and a Building Contract with final drawings will display correct dimensions and detail. All designs are the property of Burbank and must not be used, reproduced, copied or varied, wholly or in part without written permission from an authorised Burbank representative. Copyright Burbank Australia (SA) Pty Ltd. ABN 96 165 533 406. BLD 266709.





\*Copyright conditions. All photos and illustrations are representative only. Floor plans and specifications may be varied by Burbank without notice, the dimensions are diagrammatic only and a Building Contract with final drawings will display correct dimensions and detail. All designs are the property of Burbank and must not be used, reproduced, copied or varied, wholly or in part without written permission from an authorised Burbank representative. Copyright Burbank Australia (SA) Pty Ltd. ABN 96 165 533 406. BLD 266709.



**OPTION DESCRIPTIONS****K01 - Kitchen Option 01**

Provide WIP upgrade with 32mm laminated benchtop and 2No. 800mm base cupboards including return 1No. 450mm shelves.

**K02 - Kitchen Option 02**

Provide Butlers pantry upgrade with 32mm laminate benchtop, 1No. single bowl sink with drainer and tiled splashback to suit. 1No. 900mm base cupboard, 2No. 450mm base cupboards, 1800mm high adjustable open shelves.

**K03 - Kitchen Option 03**

Provide Kitchen upgrade including: 3No. 450mm base cupboards, 2No. 900mm base cupboards, 900mm under bench oven and cooktop with retractable rangehood above, 2No. 450mm overhead cupboards, 2No. 900mm overhead cupboards with tiled splashback to suit, relocated MW space to Island bench with 1No. 900mm base cupboard with double bowl sink, 1No. 450mm base cupboard, 1No. 450mm drawers and DW provision. Robe to Bed 4 relocated to allow WIP size increase which has relocated Ref. space and 450mm shelves.  
Note: This option reduces Bed 1 / WIR by 310mm

**K04 - Kitchen Option 04**

Provide Kitchen & Butlers pantry upgrade including: 2No. 600mm wall oven towers and 6No. 900mm base cabinets, 2No. 900mm overhead cabinets with 1No. 900mm retractable rangehood and cooktop. Tiled splashback to suit. 1No. 400mm base cupboard and 1800mm high adjustable open shelves. 32mm laminate benchtop and 1No. single bowl sink with drainer and tiled splashback to suit in Butlers.  
Note: This option reduces Bed 1 / WIR by 310mm

**L01 - Laundry Option 01**

Provide Laundry upgrade including: 1No. 700mm base cupboard, 1No. 300mm base cupboard, 1No. 700mm overhead cupboard, 1No. 300mm overhead cupboard, with additional tiled splashback and benchtop to suit.  
Note:  
Option not available with Internal01.

**L02 - Laundry Option 02**

Provide Laundry upgrade with 1No. 400mm Broom cupboard, 2No. 800mm base cupboards, 2No. 800mm overhead cupboards. Additional tiled splashback and benchtop to suit.  
Note:  
This option only available with Internal01.

**L03 - Laundry Option 03**

Provide Laundry upgrade with laminated insert trough, 1No. 800mm base cupboard, 1No. 300mm base cupboard, 1No. 800mm overhead cupboard, 1No. 300mm overhead cupboard, with additional tiled splash back and benchtop to suit.  
Note:  
Option only available with Internal01

**EN01 - Ensuite Option 01**

Provide 1790mm x 900mm tiled shower base in lieu of standard to Ensuite.  
Note:  
Option not available with Internal02, Internal06, Internal07 & Internal08.

**IN01 - Internal Option 01**

Provide alternative layout to Laundry, Bath, WC & Vestibule. Layout includes Powder, Bath & Laundry with additional Linen and 900mm x 900mm tiled shower base. 1No. 782mm vanity unit to Bath and 1No. 682mm vanity unit to Powder.

**IN02 - Internal Option 02**

Provide alternative layout to swap locations of Bed 1 & Family with WIR and Ensuite. Remove existing Coats and make larger Store cupboard. Relocate existing windows and add 1No. 2095mm x 2690mm aluminium sliding door to rear of house in Family room.  
Note:  
Option not available with Internal05, Internal06, Internal07, Internal08, Ensuite01, Kitchen03 & Kitchen04.

**IN03 - Internal Option 03**

Provide alternative layout to swap locations of WIR & Ensuite with 1900mm x 900mm wall to wall tiled shower base and 1482mm vanity unit with double basins and separate WC with 720mm cavity sliding door.  
Note:  
Option only available with Internal02.

**IN04 - Internal Option 04**

Provide alternative layout to make existing Bed 2 an Activity room. Additional bulkhead to Entry.  
Note:  
This option makes the house become 3 Bedrooms instead of standard 4 Bedrooms.

**IN05 - Internal Option 05**

Provide built in desk option for Study with 2No. 450mm drawer units and 32mm laminate benchtop.  
Note:  
Option not available with Internal02 & Internal03.

**IN06 - Internal Option 06**

Provide alternative layout to Bed 1, Ensuite & WIR. Provide 1582mm vanity unit with double basins and 1500mm x 900mm tiled shower base with separate WC 2. Built in dresser to Bed 1 with 2No. 450mm drawer units and 32mm laminate benchtop with 150mm deep bulkhead. Additional Linen to passage with 1No. 300mm deep shelves and 1No. 720mm flush panel hinged door.  
Note:  
Option not available with Internal02, Internal03 & Ensuite01

**OPTION DESCRIPTIONS****IN07 - Internal Option 07**

Provide alternative layout to Bed 1, Ensuite & WIR.  
Provide 1482mm vanity unit with double basins and 1480mm x 900mm tiled shower base with 1780mm free standing bath and separate WC.  
Provide 1No. 1200mm x 1810mm aluminium awning window in lieu of standard.  
Add 720mm flush panel hinged door to WC 2.

**IN08 - Internal Option 08**

Provide alternative layout to Bed 1, Ensuite & WIR.  
Provide 1582mm vanity unit with double basins and 1780mm x 900mm tiled shower base.  
Additional hanging rail and shelf to WIR.  
Note:  
Option not available with Internal02, Internal03 & Ensuite01.

**IN09 - Internal Option 09**

Provide Family room upgrade with additional plaster lined walls  
Real Flame Inspire 900 gas fireplace with capped gas point,  
2No. 700mm storage units,  
3No. 900mm joinery units with 32mm laminated benchtop and  
3No. 900mm overhead joinery units.  
Note:  
This option only available with Internal02 & Internal03

**EX01 - External Option 01**

Provide roof over articulation to create Alfresco area under existing roof line.  
Note:  
Minimum Lot size to be 472m<sup>2</sup> in order to comply with maximum roof coverage allowance.  
(Calculated using Eastwood facade as worst-case situation due to it having the biggest roof area out of all other facades in this house type)

**EX02 - External Option 02**

Provide raised ceiling to Meals / Kitchen area with 2No. 514mm x 2410mm aluminium fixed windows above Meals sliding doors.

**EX03 - External Option 03**

Provide raked roof over Alfresco area under existing roof line and raised ceiling to Meals / Kitchen area with 2No. 514mm x 2410mm aluminium fixed windows above Meals sliding doors.  
Provide 3No. 1300mm x 450mm fixed Velux skylights to Alfresco ceiling.  
Note:  
Minimum Lot size to be 472m<sup>2</sup> in order to comply with Maximum roof coverage allowance.  
(Calculated using Eastwood facade as worst case-situation due to it having the biggest roof area out of all other facades in this house type)