



Facades available:	
Coastal, Delta, Kingston, Nouveau Scarborough, Traditional, York	
Overall home width	14.27m
Overall home length	19.79m

Residence	194.3m ²	20.9sq
Garage	38.8m ²	4.2sq
Porch	4.0m ²	0.4sq
Alfresco	14.0m ²	1.5sq
Total	251.1m²	27.0sq

FLOORPLAN OPTIONS

We personalise our floorplans. Talk to us about our huge range of ready-to-go design options.

Listed details based on Traditional facade floorplan (illustrated)

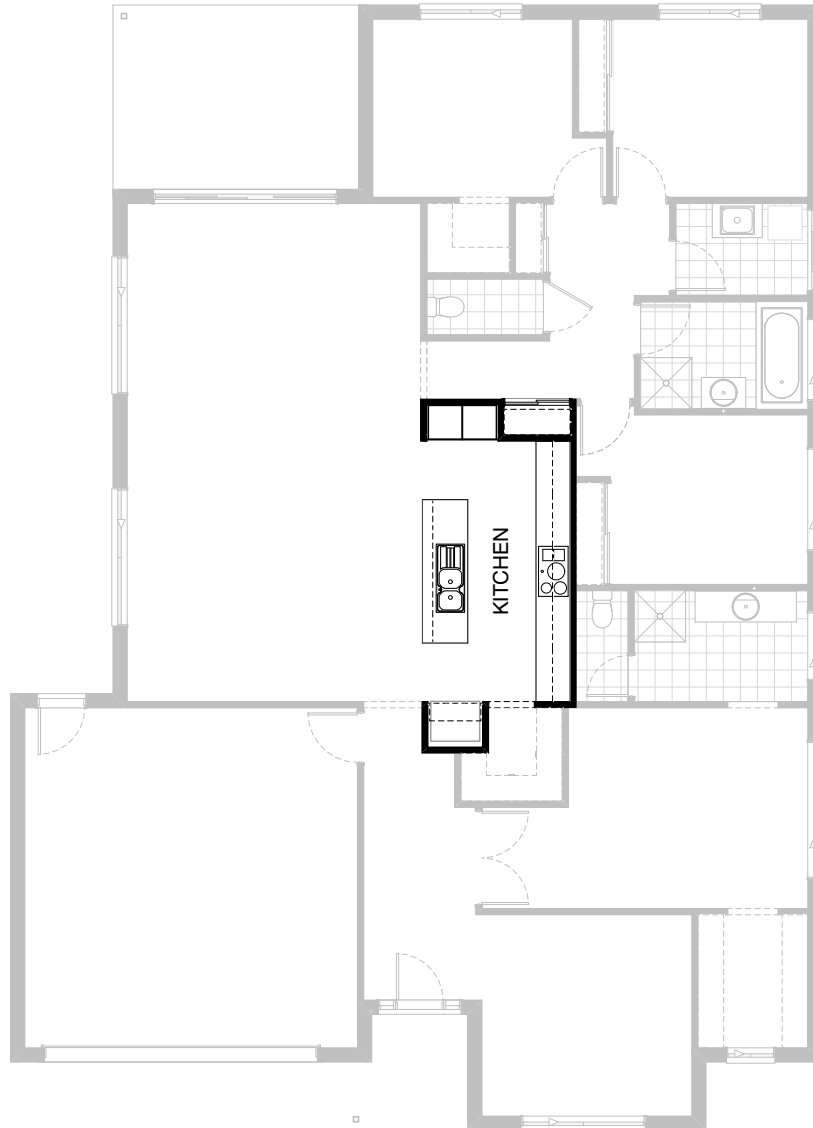
*Copyright conditions. All photos and illustrations are representative only. Floor plans and specifications may be varied by Burbank without notice, the dimensions are diagrammatic only and a Building Contract with final drawings will display correct dimensions and detail. All designs are the property of Burbank and must not be used, reproduced, copied or varied, wholly or in part without written permission from an authorised Burbank representative. Copyright Burbank Australia (QLD) Pty Ltd. ABN 77 103 014 615. QBCC 1046544.

Call 13 BURBANK
Visit burbank.com.au



Option Kitchen01

Provide Kitchen upgrade option, including:
1No. Open shelf over Ref. space,
4No. 900mm overhead cupboards.



Option Kitchen02

Provide Kitchen upgrade option, including:

- 1No. Open shelf over Ref. space,
 - 900mm retractable rangehood,
 - 900mm induction cooktop,
 - dishwasher provision,
 - 6No. 900mm base cupboards,
 - 4No. 900mm overhead cupboards,
 - 2No. 600mm laminate oven towers with microwave provisions,
 - 1No. 450mm base cupboard,
 - 1No. 450mm drawer unit.
- Reduce island benchtop to suit.
Reduce Linen 2 and provide 2240mm x 1160mm sliding door.

Note:

Option not available with Internal04, External01 & External02.



Option Kitchen03

Provide Kitchen upgrade option, including:
 relocated Ref. space with
 1No. Open shelf over Ref. space,
 900mm retractable rangehood,
 900mm induction cooktop,
 2No. 900mm base cupboards,
 2No. 800mm base cupboards,
 2No. 400mm base cupboards,
 2No. 800mm overhead cupboards,
 2No. 400mm overhead cupboards,
 2No. 600mm laminate oven towers with microwave provisions.
 1No. 450mm base cupboard
 provision with pot drawer.
 Reduce island benchtop to suit.
 Remove bulkhead to Walk-in Pantry.



Option Kitchen04

Provide L-shaped Kitchen upgrade option with clear island bench, including:
 additional benchtop and tiled splashback,
 relocated Ref. space with open shelf over Ref. space.
 900mm retractable rangehood,
 900mm induction cooktop,
 dishwasher provision,
 1No. 450mm drawer unit,
 3No. 900mm base cupboards,
 1No. 900mm blind base corner cupboard with 450mm door,
 2No. 700mm base cupboards,
 2No. 450mm base cupboards,
 2No. 700mm overhead cupboards,
 1No. 350mm overhead cupboard,
 1No. 600mm open shelf overhead cupboard,
 2No. 600mm laminate oven towers with microwave provisions.
 Remove bulkhead to Walk-in Pantry.

Note:
 Option not available with Internal04, External01 & External02.



Option Laundry01

Provide Laundry upgrade option with laminate base and overhead cupboards and stainless steel inset trough, including:
2No. 700mm base cupboards,
2No. 700mm overhead cupboards,
additional benchtop and tiled splashback to suit.

Note:
Option not available with Internal04, External01 & External02.



Option Laundry02

Provide Laundry upgrade option with laminate base and overhead cupboards and stainless steel inset trough, including:

- 1No. 800mm base cupboard,
- 1No. 800mm overhead cupboard,
- 2No. 700mm overhead cupboards,
- additional benchtop and tiled splashback to suit.

Provide 2105mm x 850mm hinged access door in lieu of standard 2110mm x 1450mm aluminium sliding door. Option also provides open space under bench for washer and dryer side-by-side and raises the bench height to 950mm from FFL (kicker height raises).

Note:

Option not available with Internal04, External01 & External02.



Option Ensuite01

Provide Ensuite upgrade option, including:
1782mm vanity with double basins,
1000mm x 1000mm tiled shower base.

Note:
Option not available with Internal04,
External01 & External02.



Option Ensuite02

Provide Ensuite upgrade option with rearranged layout, including:
 1782mm vanity with double basins,
 1950mm x 900mm tiled shower base with grate drain,
 enclosed WC with 720mm hinged door remains.
 Provide 350mm x 1450mm aluminium fixed window over shower in lieu of standard.
 Provide 2No. 1800mm x 610mm and
 1No. 514mm x 1450mm aluminium sliding windows to Bed 1 in lieu of standard.
 Option takes 60mm from Walk-in Robe 1 and Living room to accommodate.
 Option moves bulkhead opening to Ensuite as shown.

Note:
 Option not available with Internal04, External01 & External02.



Option Ensuite03

Provide Ensuite upgrade option with rearranged layout, including:
 1780mm freestanding bath,
 1482mm vanity with single basin,
 1400mm x 900mm tiled shower base with grate drain, relocated toilet pan.
 Provide 1200mm x 1450mm aluminium sliding window over bath in lieu of standard.
 Provide 2No. 1800mm x 610mm and
 1No. 514mm x 1450mm aluminium sliding windows to Bed 1 in lieu of standard.
 Option takes 60mm from Walk-in Robe 1 and Living room to accommodate.
 Option moves bulkhead opening to Ensuite as shown.

Note:
 Option not available with Internal04, External01 & External02.

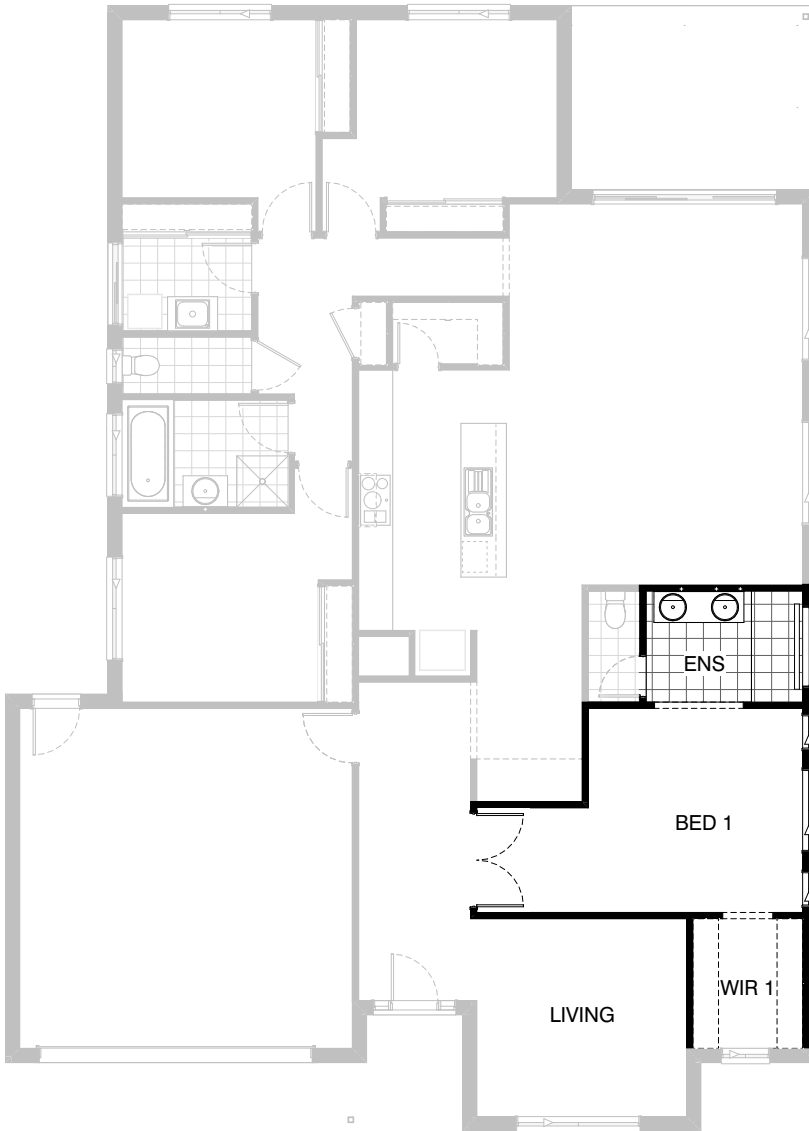


Option Ensuite04

Provide Ensuite upgrade option, including:
1980mm x 900mm tiled shower base with grate drain
in lieu of standard,
1No. 350mm x 1450mm aluminium fixed window over
shower in lieu of standard.

Note:
Option only available with Internal04.

Option not available with External01 & External02.



Option Ensuite05

Provide Ensuite upgrade option with rearranged layout, including:
 1582mm vanity with double basins,
 1950mm x 900mm tiled shower base with grate drain,
 enclosed WC with 720mm hinged door remains.
 Provide 350mm x 1450mm aluminium fixed window over shower in lieu of standard.
 Provide 2No. 1800mm x 610mm and
 1No. 514mm x 1450mm aluminium sliding windows to Bed 1 in lieu of standard.
 Option takes 60mm from Walk-in Robe 1 and Living room to accommodate.
 Provide 1580mm wide bulkhead opening to Ensuite as shown.

Note:
 Option only available with External01.

Option not available with Internal04 & External02.



Option Ensuite06

Provide Ensuite upgrade option, including:
1730mm x 900mm tiled shower base with grate drain in lieu of standard,
1No. 350mm x 1450mm aluminium fixed window over shower in lieu of standard.

Note:
Option only available with External02.

Option not available with Internal04 & External01.



Option Internal01

Provide built-in joinery option to Living to create Theatre room, including:
450mm deep 32mm thick laminate benchtop,
2No. 800mm T.V. unit cupboards,
1No. 700mm T.V. unit cupboard,
2No. 300mm deep 60mm thick open shelves over,
Provide 2No. plaster-lined Voids with bulkhead over.

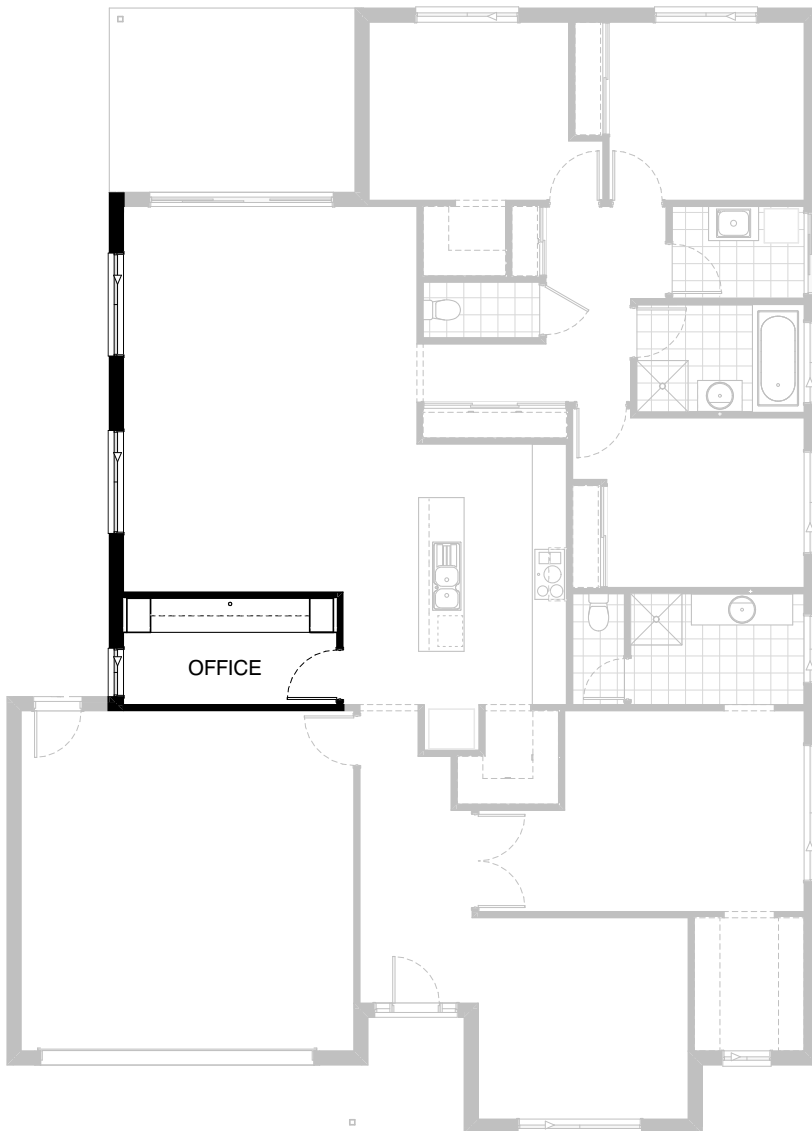
Note:
Option not available with Ensuite02, Ensuite03,
Ensuite05 & Internal02.



Option Internal02

Provide Bedroom 5 option in lieu of Living room, including:
built-in Robe with 450mm shelf and hanging rail with full-width sliding doors,
870mm hinged door in lieu of opening.

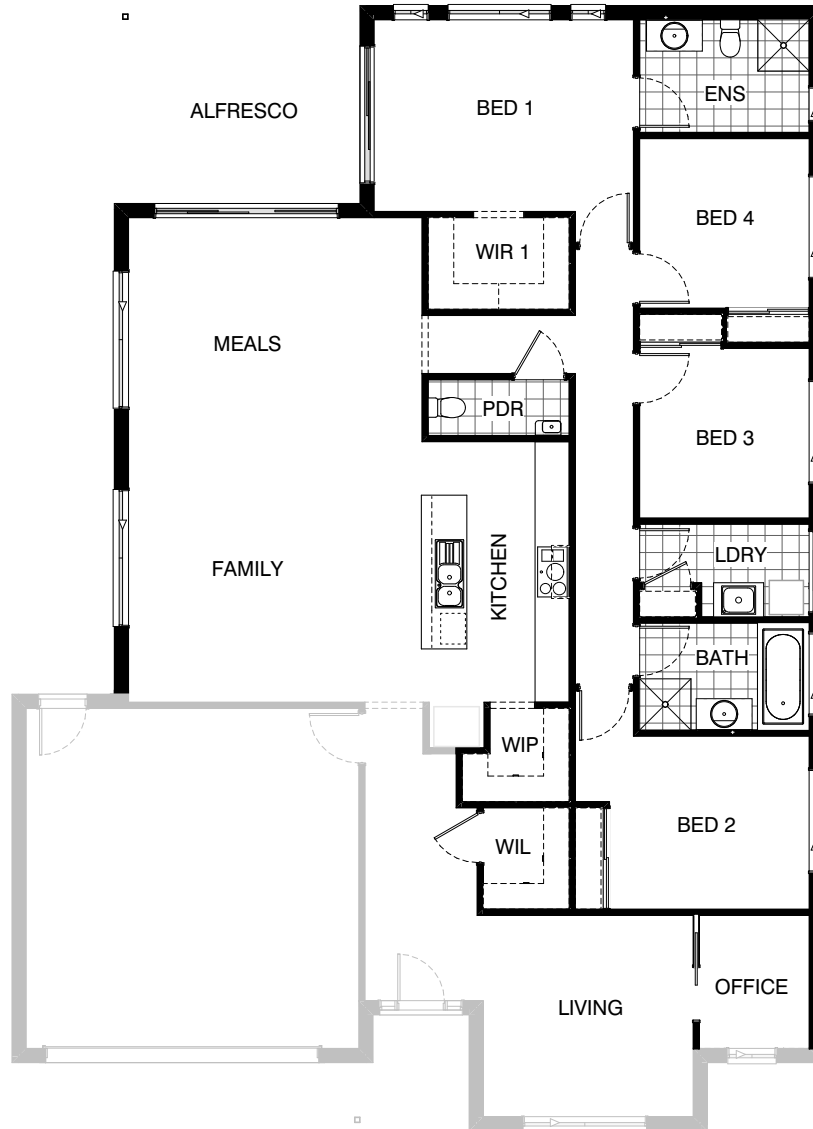
Note:
Option not available with Internal01.



Option Internal03

Provide Home Office with built-in joinery option, including:
600mm deep 32mm thick laminate benchtop,
2No. 800mm overhead cupboards,
3No. 400mm open shelf overhead cupboards,
2No. 400mm laminated cupboards,
1No. 2057mm x 850mm aluminium sliding window.
Provide 2No. 2057mm x 1810mm aluminium sliding windows to Meals and Family in lieu of standard.

Note:
Option not available with External01.



Option Internal04

Provide floor plan option which moves Bed 1 to the rear of the home as shown.

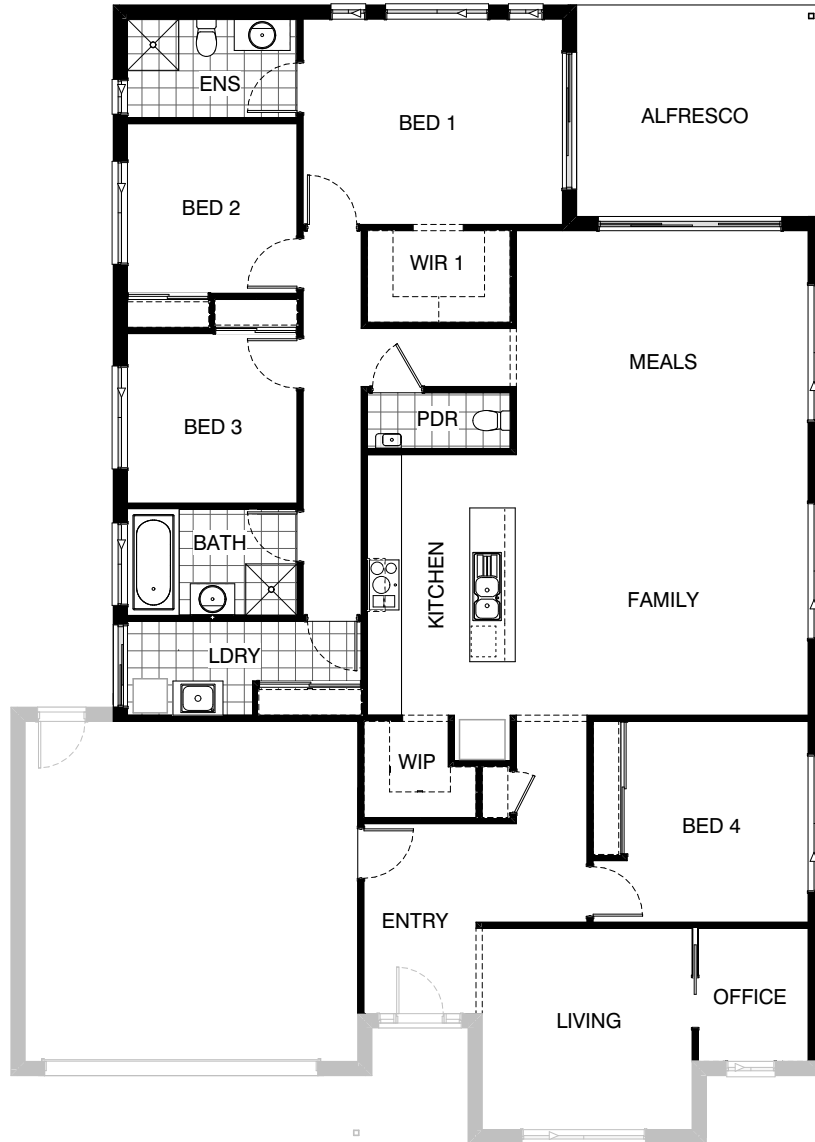
Note:
Option not available with Kitchen02, Laundry01, Laundry02, Ensuite01, Ensuite02, Ensuite03, Ensuite05, Ensuite06, External01 & External02.



Option External01

Provide floor plan option which mirrors the rear of the home as shown.

Note:
Option not available with Kitchen02, Kitchen03, Kitchen04, Laundry01, Laundry02, Ensuite01, Ensuite02, Ensuite03, Ensuite04, Ensuite06, Internal03, Internal04 & External02.

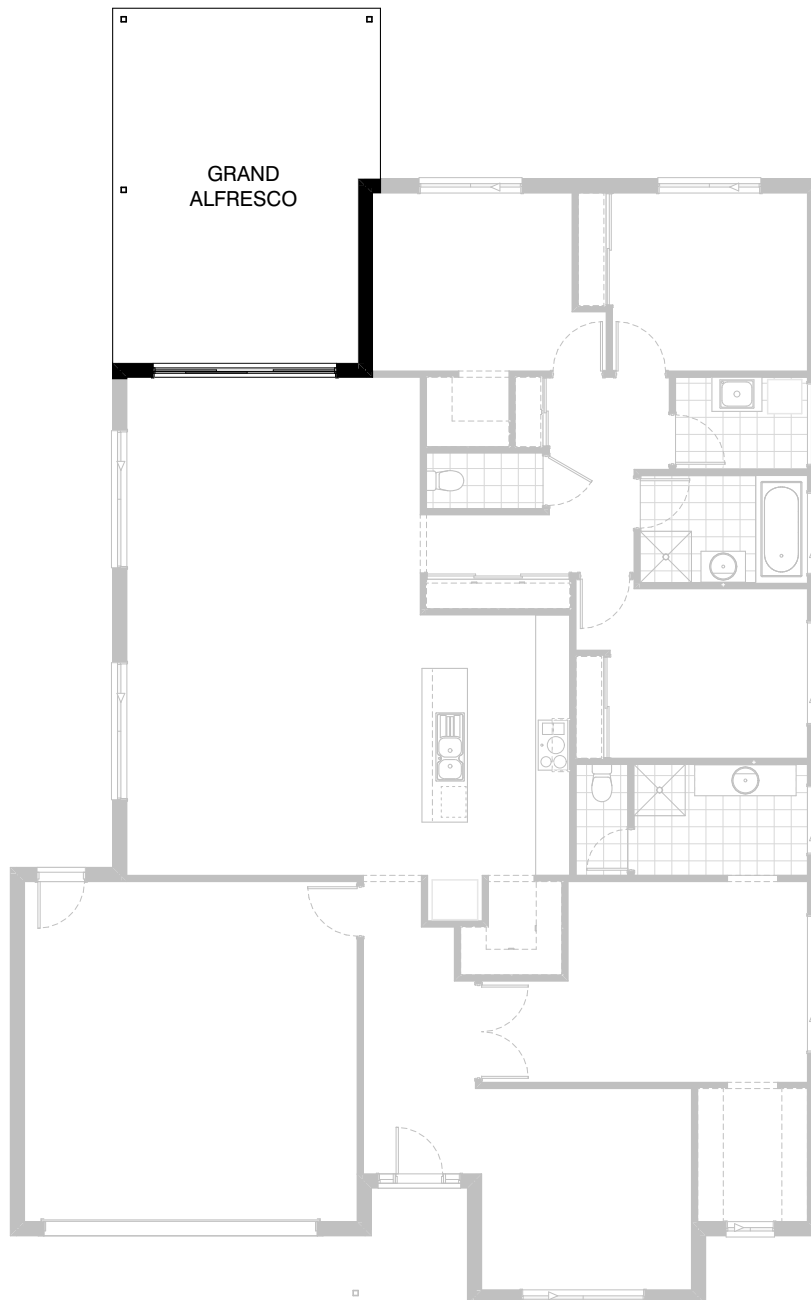


Option External02

Provide floor plan option which mirrors the rear of the home with Bed 1 to the rear as shown.

Option adds 240mm of length to the home.
Option adds 2.99m² to overall floor area.

Note:
Option not available with Kitchen02, Kitchen03, Kitchen04, Laundry01, Laundry02, Ensuite01, Ensuite02, Ensuite03, Ensuite04, Ensuite05, Internal04 & External01.



Option External03

Provide Grand Alfresco option, including:
2No. 88mm x 88mm additional timber posts,
additional structural concrete slab,
additional tiled roof over.
Option adds 3.0m to the length of the home.
Option adds 14.13m² to the total floor area.