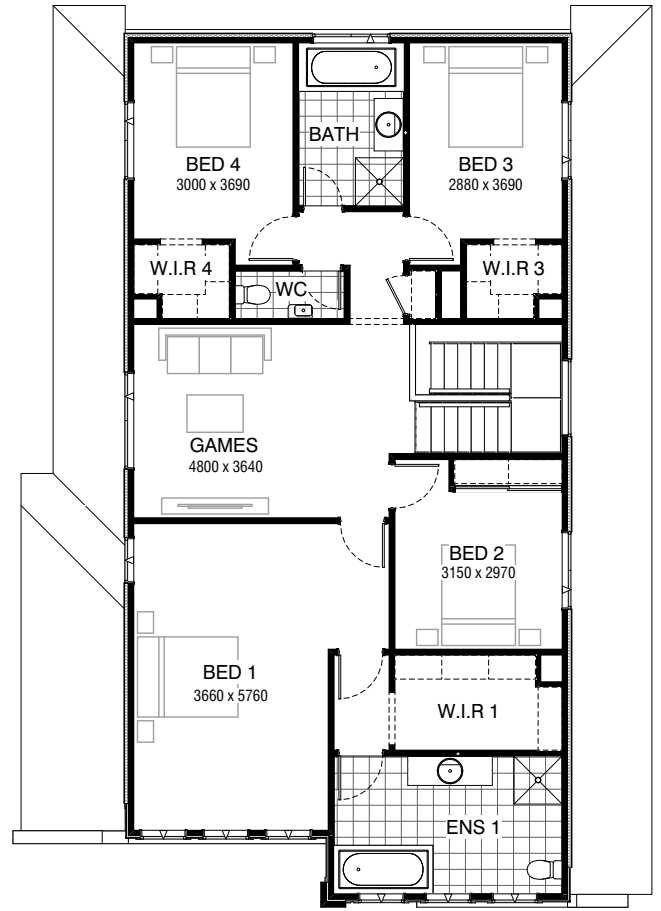


**GROUND FLOOR**



**FIRST FLOOR**

**FLOORPLAN OPTIONS**

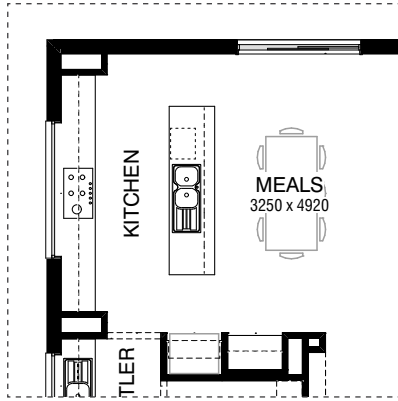
We personalise our floorplans. Talk to us about our huge range of ready-to-go design options or simply visit [www.burbank.com.au/south-australia](http://www.burbank.com.au/south-australia) for more details.

Listed details based on Coventry facade floorplan (illustrated)

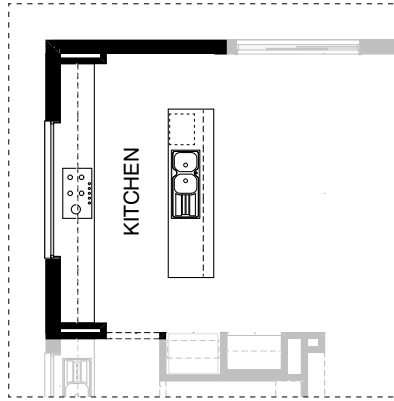
**Facades available:**

Coventry, Avondale, Halifax,	Residence	257.4m <sup>2</sup>	27.7sq
Westerley, Weston, Windermere	Garage	37.8m <sup>2</sup>	4.1sq
	Porch	3.0m <sup>2</sup>	0.3sq
<b>Overall home width</b>	<b>11.51m</b>	<b>Total</b>	<b>298.2m<sup>2</sup></b>
<b>Overall home length</b>	<b>16.43m</b>		<b>32.1sq</b>

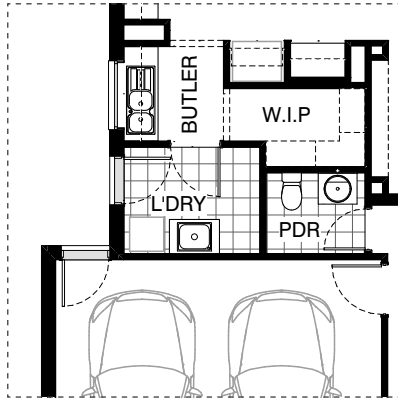
\*Copyright conditions. All photos and illustrations are representative only. Floor plans and specifications may be varied by Burbank without notice, the dimensions are diagrammatic only and a Building Contract with final drawings will display correct dimensions and detail. All designs are the property of Burbank and must not be used, reproduced, copied or varied, wholly or in part without written permission from an authorised Burbank representative. Copyright Burbank Australia (SA) Pty Ltd. ABN 96 165 533 406. BLD 266709.



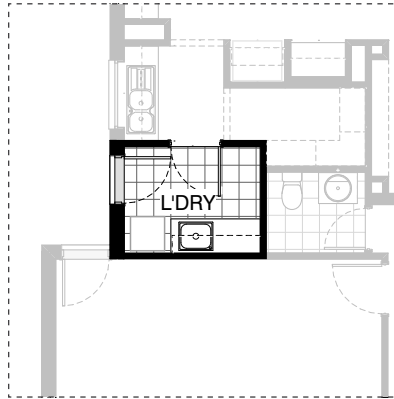
Master Kitchen Design



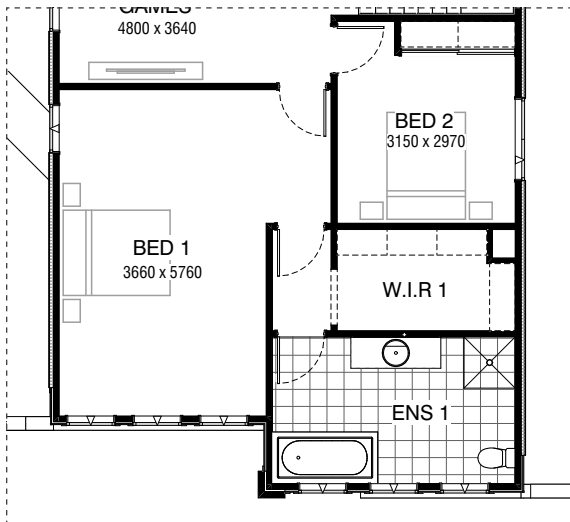
**K01**



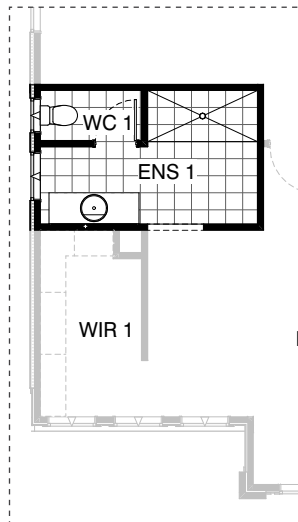
Master Laundry Design



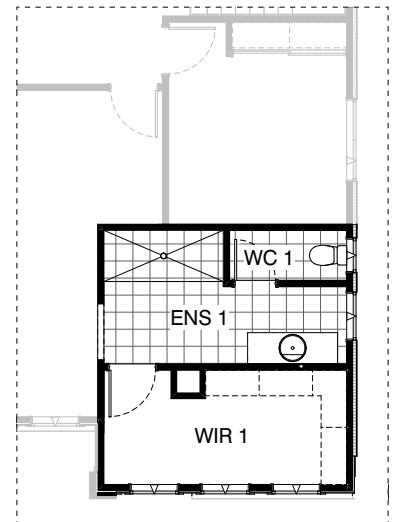
**LD01**



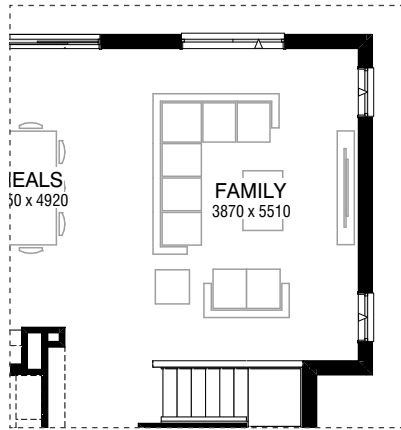
Master Ensuite Design



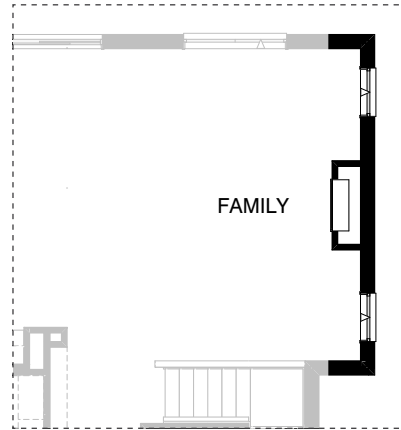
**ENS01**



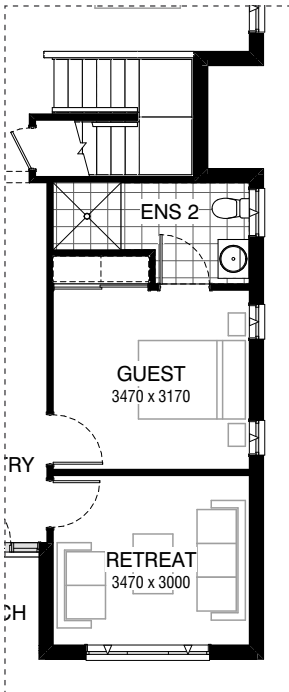
**ENS02**



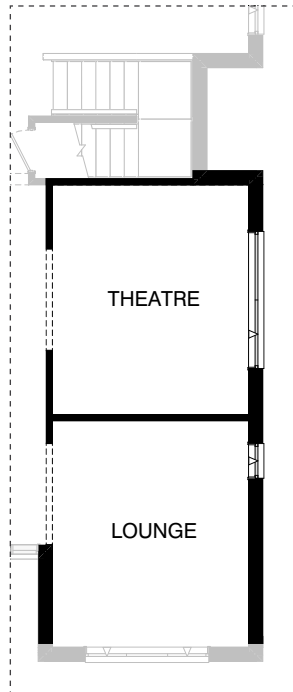
Master Design



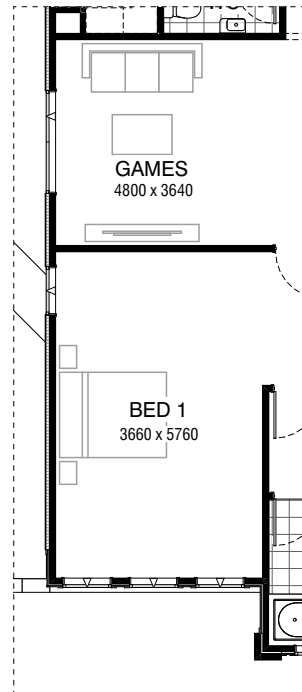
IN01



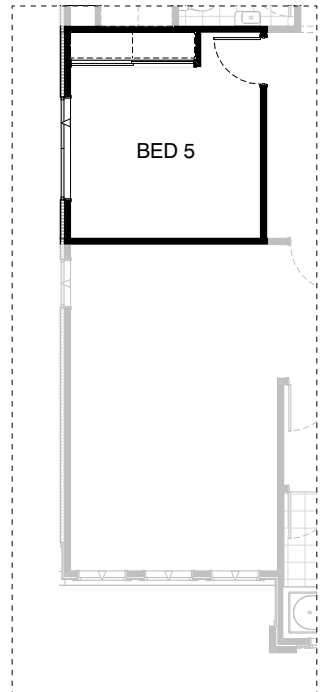
Master Design



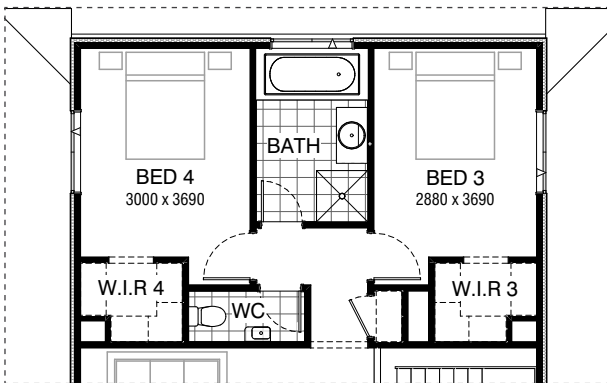
IN02



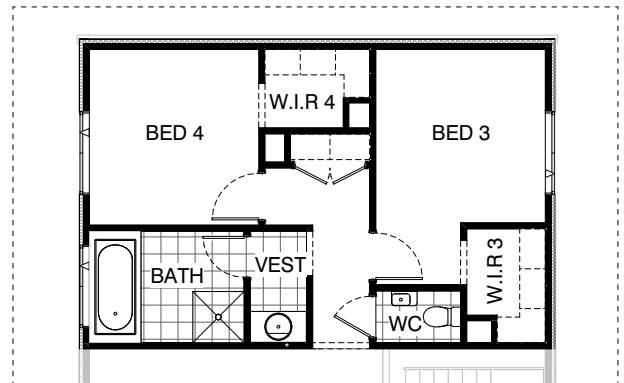
Master Design



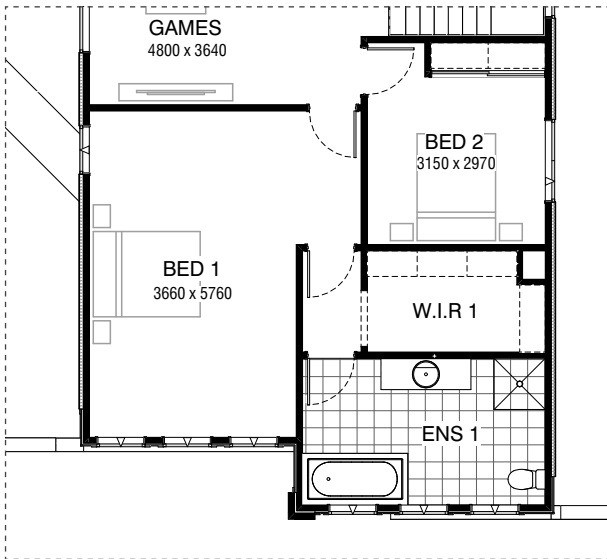
IN03



Master Design



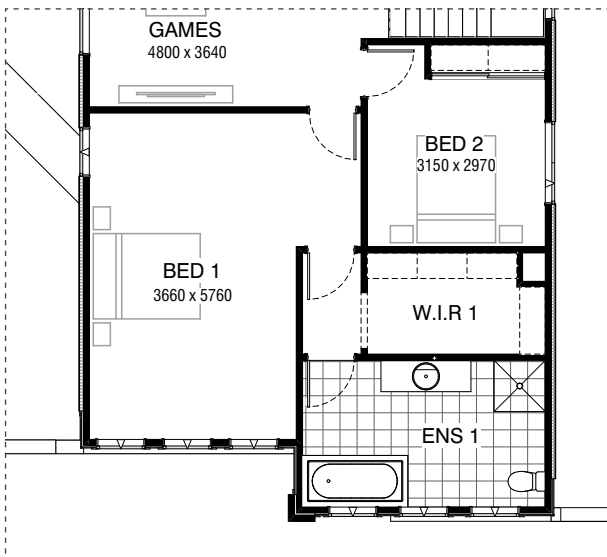
IN04



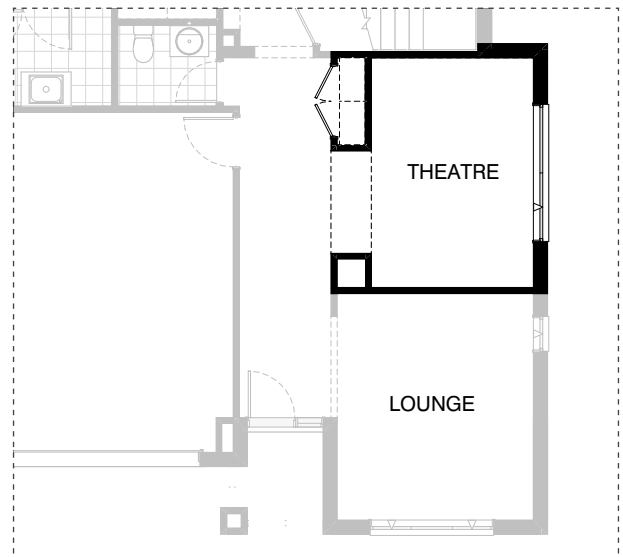
Master Design



IN05



Master Design



IN06

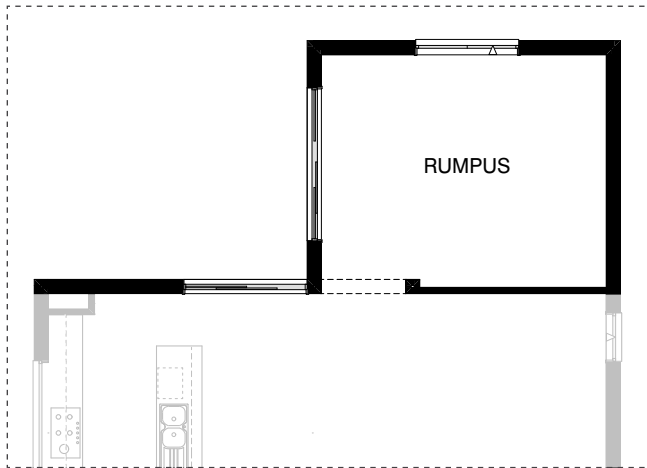


EX01

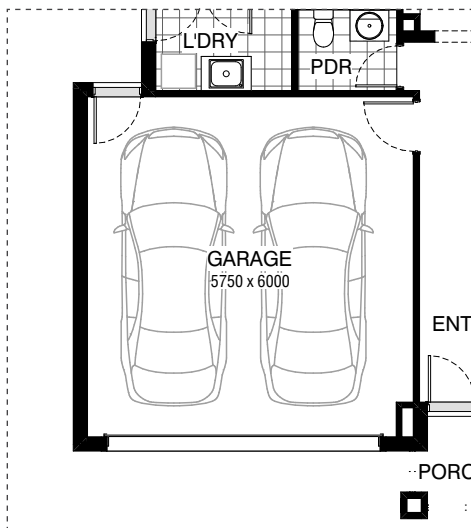


EX02

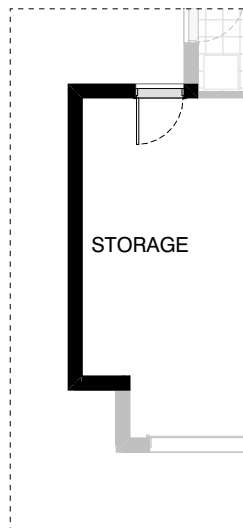
\*Copyright conditions. All photos and illustrations are representative only. Floor plans and specifications may be varied by Burbank without notice, the dimensions are diagrammatic only and a Building Contract with final drawings will display correct dimensions and detail. All designs are the property of Burbank and must not be used, reproduced, copied or varied, wholly or in part without written permission from an authorised Burbank representative. Copyright Burbank Australia (SA) Pty Ltd. ABN 96 165 533 406. BLD 266709.



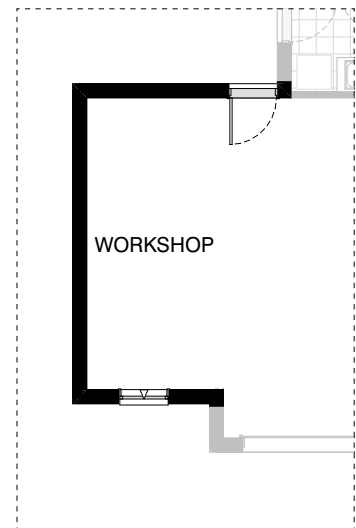
**EX03**



Master Design



**G01**



**G02**

**OPTION DESCRIPTIONS****K01 - Kitchen Option 01**

Provide Kitchen upgrade by increasing opening to kitchen by 400mm including:

6No. 900mm base cupboards,  
4No. 900mm overhead cupboards,  
1No. 900mm under bench oven with cooktop,  
1No. 900mm retractable rangehood,  
1No. MW provision with pot drawer,  
1No. double bowl sink,  
1No. 450mm drawers unit to island benchtop.  
Additional tiled splashback and benchtop to suit.  
2440mm dropped ceiling to Kitchen is standard.

**LD01 - Laundry Option 01**

Provide Laundry upgrade with laminate inset trough including:

1No. 700mm base cupboard,  
1No. 800mm base cupboard,  
1No. 700mm overhead cupboard,  
1No. 800mm overhead cupboard,  
32mm laminate benchtop and tiled splashback to suit.

**ENS01 - Ensuite Option 01**

Provide Ensuite without bathhob,  
1No. 1029mm x 610mm aluminium awning window to Ensuite WC. 1No.  
1930mm x 900mm wall-to-wall tiled shower to Ensuite.

Note:

Separate WC provided inside Ensuite.  
Relocate 1No. 1029mm x 850mm aluminium awning window to Ensuite. This option only available with Internal05.

**ENS02 - EnsuiteOption 02**

Provide Ensuite without bath (to standard Bed 1 & Ensuite layout) Swap location of Ensuite and WIR.

1No. 1029mm x 610mm aluminium awning window to Ensuite WC. 1No.  
1029mm x 850mm aluminium awning window to Ensuite. 1No. 2100mm x  
900mm wall-to-wall tiled shower to Ensuite.

Note:

Separate WC provided inside Ensuite

**IN01 - Internal Option 01**

Provide Real Flame Inspire 900 Gas fireplace,  
400mm off floor level in a 1550mm x 500mm  
boxed out plaster wall with a 4 sided black  
fascia to Family room side wall with capped gas point.

**IN02 - Internal Option 02**

Provide Theatre & Lounge in lieu of Guest / Ensuite 2 & Retreat including:

1No. 514mm x 2410mm aluminium awning window to Theatre in lieu of  
standard.  
1No. 1800mm x 610mm aluminium awning window to Lounge.

**IN03 - Internal03**

Provide Bed 5 in lieu of Games to First floor, including: Additional built-in  
Robe with gyprock sliding doors and 1No. 450mm shelf with hanging rail to  
suit.

**IN04 - Internal Option 04**

Provide alternative layout to Bath, Bed 3 and Bed 4 to provide Vestibule  
option to Bathroom.

This also reduces the sizes of Bed 3 and 4.

Additional stud frame to bathroom to create separate room for vanity in lieu  
of standard. Linen cupboard extended with 2No. 620mm doors in lieu of  
single 720mm door. Relocate the Bathroom window to suit.

**IN05 - Internal Option 05**

Provide mirrored layout to Bed 1, Ensuite & WIR including:

1No. 1200mm x 610mm aluminium awning window to Bed 1,  
1No. 1200mm x 2170mm aluminium awning window to Bed 1,  
3No. 1200mm x 850mm aluminium awning windows to WIR 1 / Bed 1, 1No.  
1029mm x 850mm aluminium awning window to Ensuite,  
1No. 1360mm x 900mm wall-to-wall tiled shower to Ensuite and  
1No. 1282mm vanity in lieu of standard.

Note:

Separate WC provided to inside Ensuite.

Bed 2 decreased in width by 190mm and Robe decreased by 60mm.

**IN06 - Internal Option 06**

Provide Theatre & Lounge option with Cloak to Entry including:

1No. 450mm wide shelving and 2No. 620mm hinged doors.

Note:

Can only be selected with Internal02

**EX01 - External Option 01**

Provide Alfresco option with

2No. 470mm x 470mm brick piers and earth floor to Alfresco.

Increases length by 4200mm. Increases area by 25.62m<sup>2</sup>.

**EX02 - External Option 02**

Provide Grand Alfresco with 3No. 470mm x 470mm brick piers and earth  
floor to Alfresco. Provide additional

1No. 2095mm x 2690mm aluminium sliding door in lieu of standard window  
to Family.

Increases length by 4200mm.

Increases area by 43.30m<sup>2</sup>.

**EX03 - External Option 03**

Provide Rumpus to rear of Family including:

1No. 1800mm x 1810mm aluminium awning window. 1No. 2095mm x  
2690mm aluminium sliding door. Increases length by 4200mm.

Increases area by 23.14m<sup>2</sup>.

**G01 - Garage Option 01**

Provide extension to Garage to create additional Storage area.

Increases width by 840mm. Increases area by 4.53m<sup>2</sup>.

**G02 - Garage Option 02**

Provide extension to Garage to create Workshop area including: 1No.

1800mm x 850mm aluminium awning feature window. Increases area by  
13.51m<sup>2</sup>.

Increases width by 2400mm.