

Facades available:

Balmain, Birchgrove, Botany,	
Cammeray, Thornleigh	
Overall home width	8.99m
Overall home length	17.63m

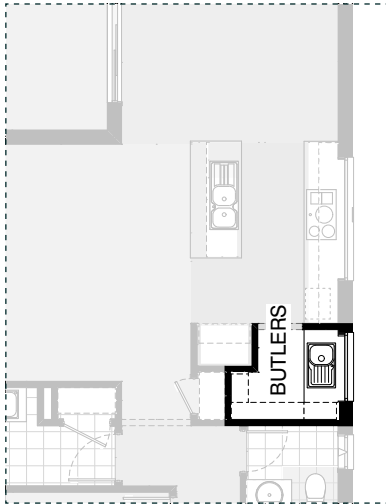
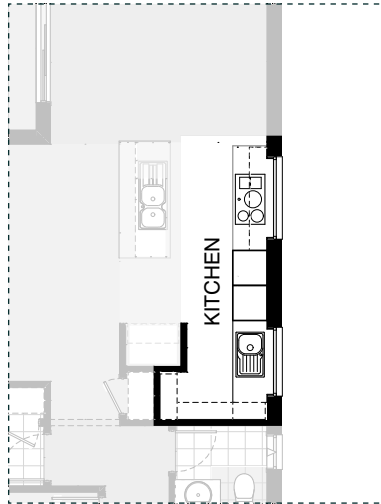
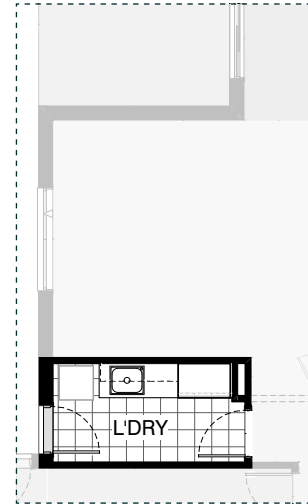
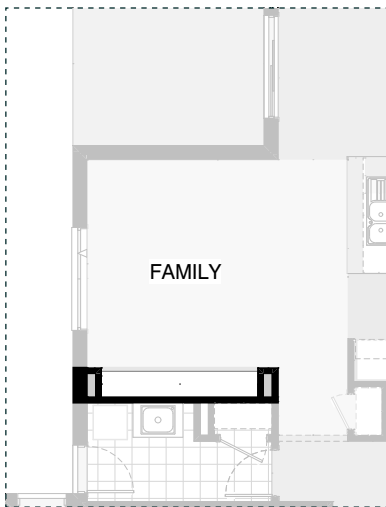
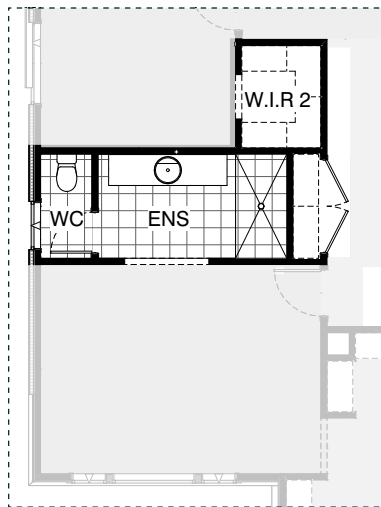
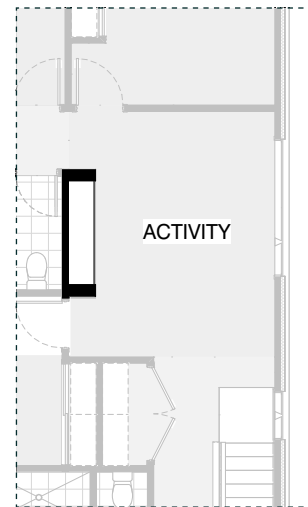
Ground Floor	83.9m ²	9.0sq
First Floor	121.3m ²	13.1sq
Garage	36.3m ²	3.9sq
Porch	4.4m ²	0.5sq
Alfresco	29.7m ²	1.0sq
Total	255.7m²	27.5sq

Sanctuary

Listed details based on Balmain facade floorplan (illustrated)

*Copyright conditions. All photos and illustrations are representative only. Floor plans and specifications may be varied by Burbank without notice, the dimensions are diagrammatic only and a Building Contract with final drawings will display correct dimensions and detail. All designs are the property of Burbank and must not be used, reproduced, copied or varied, wholly or in part without written permission from an authorised Burbank representative. Copyright Burbank Australia (SA) Pty Ltd. ABN 96 165 533 406. BLD 266709.

Call 13 BURBANK
Visit burbank.com.au

**K01****K02****L01****IN01****IN02****IN03**

Sanctuary

*Copyright conditions. All photos and illustrations are representative only. Floor plans and specifications may be varied by Burbank without notice, the dimensions are diagrammatic only and a Building Contract with final drawings will display correct dimensions and detail. All designs are the property of Burbank and must not be used, reproduced, copied or varied, wholly or in part without written permission from an authorised Burbank representative. Copyright Burbank Australia (SA) Pty Ltd. ABN 96 165 533 406. BLD 266709.

Call 13 BURBANK
Visit burbank.com.au

OPTION DESCRIPTIONS**K01 - Kitchen Option 01**

Gourmet Butlers - Provide Butlers Pantry to internal layout of dwelling in lieu of Walk in Pantry including the following alterations:

- Delete all included 450mm deep melamine shelving.
- Provide 1580mm length of 600mm deep
1No. 800mm base cupboard and
1No. 450mm base cupboard with
20mm included zenith range benchtop with
20mm edge, included range tiled splashback to internal Elevation B.
- Inclusion range single bowl single drainer sink.
- 1200mm x 1210mm aluminium fixed window including
no bottom reveal and extension of benchtop to internal Elevation B.
- 1800mm high x 300mm deep laminated shelving units with 5No. fixed
shelves
to Elevations C and D including laminated shelving unit with 2No. adjustable
shelves.

K02 - Kitchen Option 02

Deluxe Kitchen - Provide modifications to Kitchen layout within dwelling including the following alterations:

- Delete all included 450mm deep melamine shelving.
- Provide 1740mm length of 600mm deep
1No. 800mm base cupboard and
1No. 600mm base cupboard with 20mm
included Zenith range benchtop with 20mm edge,
included range tiled splashback to internal Elevation B.
- Inclusion range single bowl single drainer sink.
- 1200mm x 1210mm aluminium fixed window including
no bottom reveal and extension of benchtop to internal Elevation B.
- 1800mm high x 300mm deep laminated shelving units with
5No. fixed shelves to Elevations C and D including
laminated shelving unit with 2No. adjustable shelves.
- 2No. 600mm wide laminated wall oven and microwave provision towers
including
all required connections and relocate to tower oven provisions in lieu of
standard.
- 1840mm length of 600mm deep
1No. 900mm base cupboard,
2No. 450mm base cupboards with
20mm included Zenith range benchtop with 20mm edge,
included range tiled splashback and 1No. retractable rangehood
concealed within 900mm overhead cupboard and
2No. 450mm overhead cupboards to internal Elevation B.
- 514mm x 1450mm aluminium fixed window including no bottom reveal and
extension of benchtop to kitchen splashback in lieu of standard.

L01 - Laundry Option 01

Luxe Laundry - Provide modifications to Laundry layout within dwelling including the following alterations:

- Delete site built Linen cupboard including
plaster lined walls, hinged door and shelving to suit.
- Relocate plumbing void to Laundry internal Elevation B.
- 900mm wide laminated Linen unit including 5No. shelves abutting void.
- 510mm extension to laminated benchtop with
1No. 900mm base cupboard,
1No. 450mm base cupboard
including additional tiled splashback to suit.
- 1No. 900mm overhead cupboard,
1No. 450mm overhead cupboard
including laminated hinged doors

IN01 - Internal Option 01

Family Entertainer -

- Provide 450mm deep x 2750mm wide laminated entertainment unit including 32mm thick laminated benchtop, 3No. 900mm T.V unit cupboards and plaster lined voids to either side of Family - Internal Elevation C.

IN02 - Internal Option 02

- Relocate WC to Ensuite internal Elevation D
in lieu of internal Elevation B.
- Relocate Linen 2 cupboard to previous WC location and
resize to 1850mm x 510mm wide. (internal dimensions)
- Rotate and relocate Ensuite shower to be positioned adjacent to
new Linen 2 location and resize to 1830mm x 900mm wide.
- 2082mm wide laminate vanity unit in lieu of standard and
centralising location to suit.
- Centralise Ensuite opening and widen to suit.
- Provide 1820mm x 1410mm wide Walk in Robe including
800mm wide opening with plaster bulkhead above to Bed 2
in lieu of standard site built Robe and sliding doors.
Provide additional 450mm deep single shelf with
chrome hanging rail, creating "U" shaped configuration.

IN03 - Internal Option 03

- Provide 450mm deep x 1830mm wide laminated entertainment unit including 32mm thick laminated benchtop, 2No. 450mm T.V unit cupboards, 1No 850mm T.V unit cupboard and 180mm plaster lined nib walls to either side of Activity - Internal Elevation D wall, adjacent to Powder 2.

Sanctuary