

**Facades available:**

Sheffield, Aster, Eastwood,	
Hartford, Lancaster, Leawood,	
Newbury, Wiltshire	
<b>Overall home width</b>	<b>14.03m</b>
<b>Overall home length</b>	<b>23.63 m</b>

Residence	217.8m <sup>2</sup>	23.4sq
Garage	36.3m <sup>2</sup>	3.9sq
Porch	6.8m <sup>2</sup>	0.7sq
Grand Alfresco	28.9m <sup>2</sup>	3.1sq
<b>Total</b>	<b>289.8m<sup>2</sup></b>	<b>31.2sq</b>

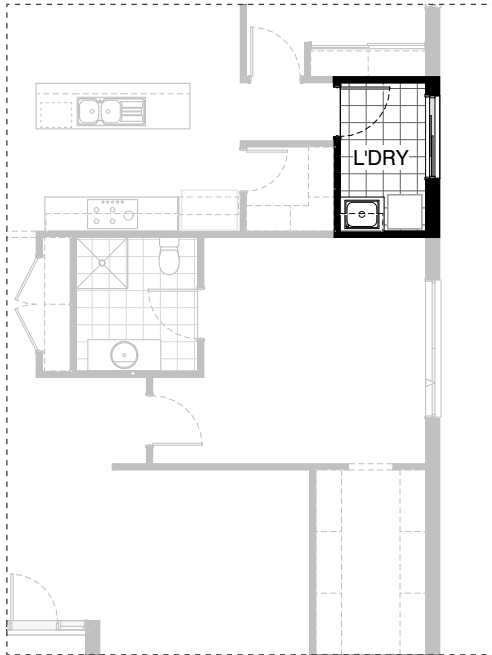
**FLOORPLAN OPTIONS**

We personalise our floorplans. Talk to us about our huge range of ready-to-go design options or simply visit [www.burbank.com.au/south-australia](http://www.burbank.com.au/south-australia) for more details.

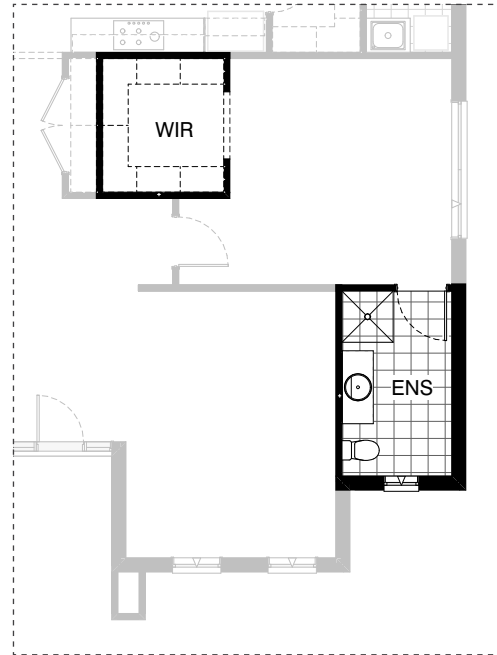
Listed details based on Sheffield facade floorplan (illustrated)

\*Copyright conditions. All photos and illustrations are representative only. Floor plans and specifications may be varied by Burbank without notice, the dimensions are diagrammatic only and a Building Contract with final drawings will display correct dimensions and detail. All designs are the property of Burbank and must not be used, reproduced, copied or varied, wholly or in part without written permission from an authorised Burbank representative. Copyright Burbank Australia (SA) Pty Ltd. ABN 96 165 533 406. BLD 266709.

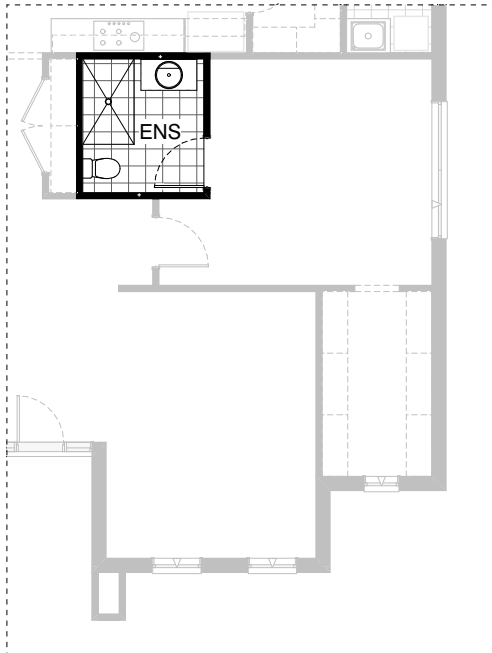
**Call 13 BURBANK**  
**Visit [burbank.com.au](http://burbank.com.au)**



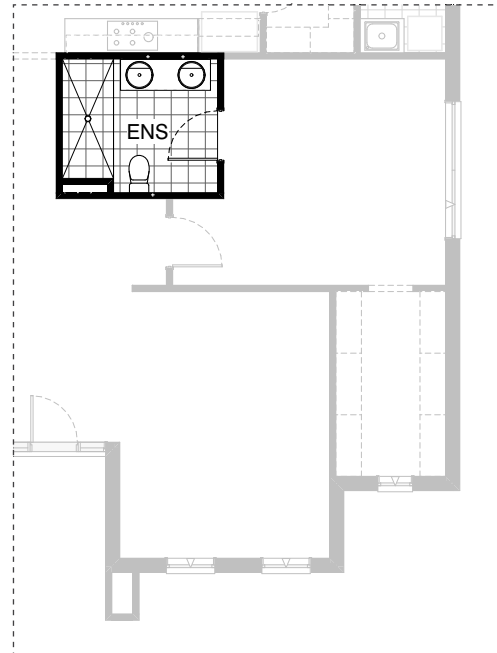
**L01**



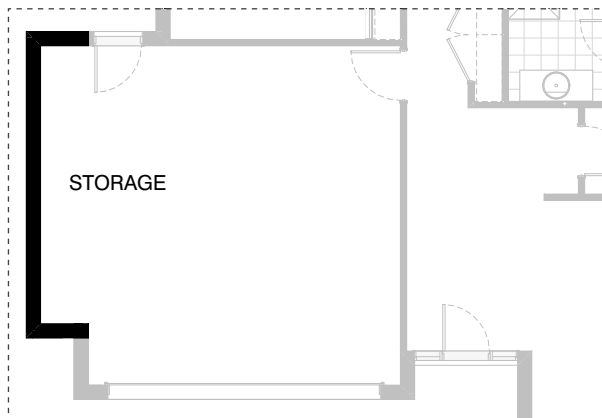
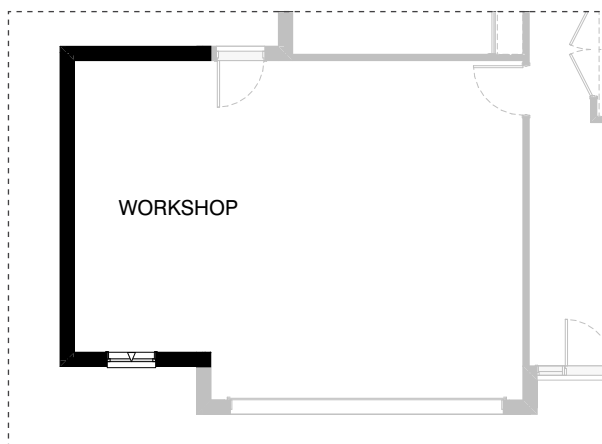
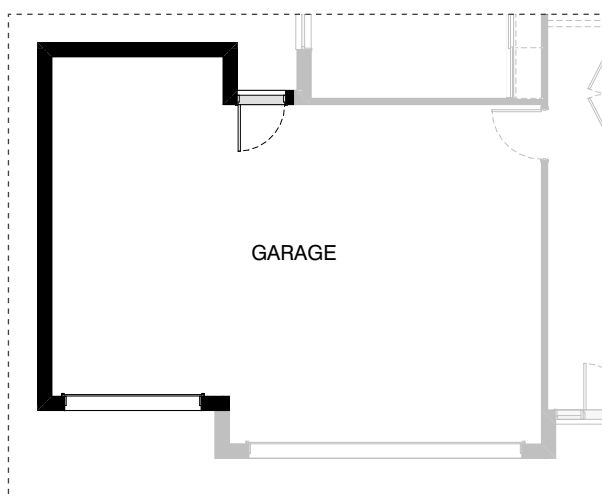
**IN01**



**EN01**



**EN02**

**G01****G02****G03**

**OPTION DESCRIPTIONS****L01 - Laundry Option 01**

Provide Laundry upgrade including:  
1No. 700mm base cupboard with inset trough,  
1No. 700mm overhead cupboard,  
additional tiled splashback and benchtop to suit.

**IN01 - Internal Option 01**

Relocate Ensuite with WIR and provide  
additional hanging rail and shelf to WIR.

**EN01 - Ensuite Option 01**

Provide Ensuite upgrade with  
900mm x 1500mm tiled shower base,  
1No. 982mm wide vanity unit in lieu of standard to suit.

**EN02 - Ensuite Option 02**

Provide Ensuite upgrade by deleting Linen cupboard  
including 2No. 820mm flush panel hinged doors,  
300mm deep shelves and extend Ensuite width by 600mm.  
Provide additional 2100mm x 900mm wall to wall  
tiled shower base in lieu of standard with Void on side,  
1No. 1582mm wide vanity with double basins in lieu of standard.

**G01 - Garage Option 01**

Provide extension to Garage to  
create additional Storage area.  
Increases width by 840mm.  
Increases area by 4.53m<sup>2</sup>.

**G02 - Garage Option 02**

Provide extension to Garage to create  
Workshop area including  
1No. 1800mm x 850mm aluminium  
awning feature window to suit.  
Increases width by 2400mm.  
Increases area by 13.51m<sup>2</sup>.

**G03 - Garage Option 03**

Provide triple car Garage including  
1No. additional 2140mm x 2410mm  
Garage door as per colour selection.  
Increases width by 3120mm.  
Increases area by 20.51m<sup>2</sup>.