

Facades available:	
Coastal, Delta, Kingston,	
Nouveau, Traditional, York	
Overall home width	8.99m
Overall home length	25.07m

Residence	151.3m ²	16.3sq
Garage	37.3m ²	4.0sq
Porch	1.8m ²	0.2sq
Alfresco	10.1m ²	1.1sq
Total	200.5m²	21.6sq

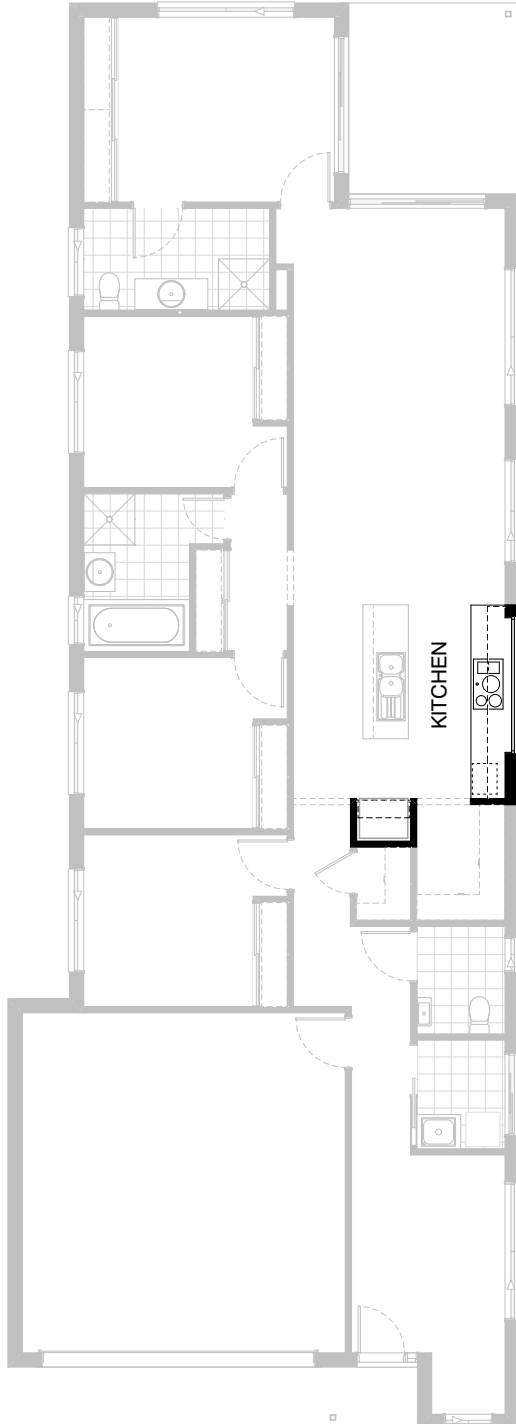
FLOORPLAN OPTIONS

We personalise our floorplans. Talk to us about our huge range of ready-to-go design options.

Listed details based on Traditional facade floorplan (illustrated)

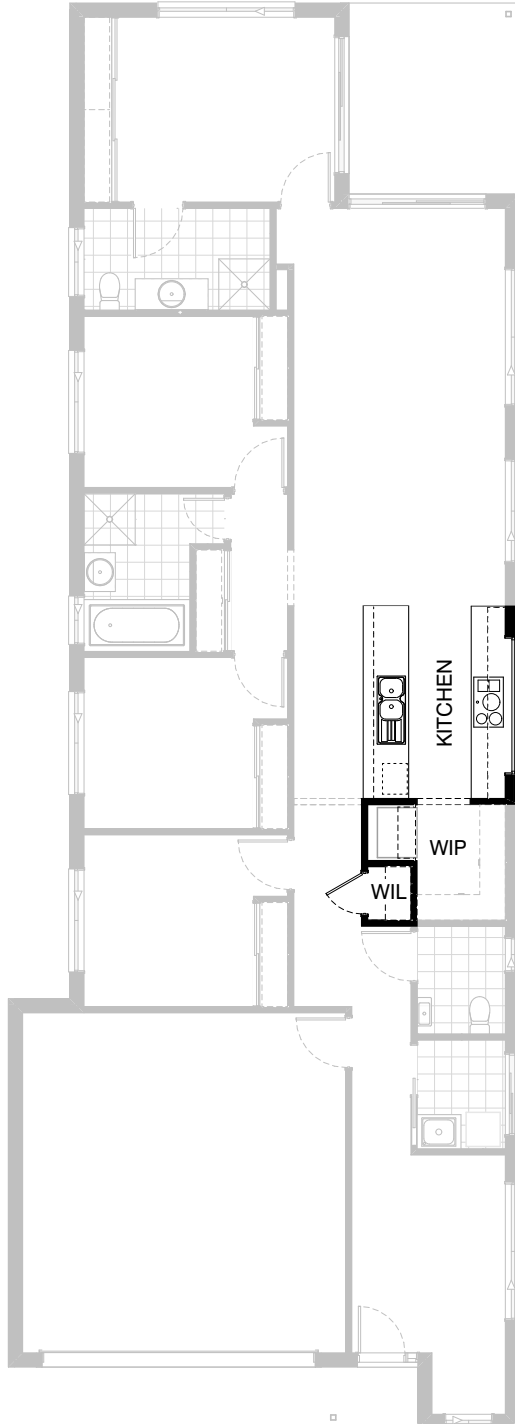
*Copyright conditions. All photos and illustrations are representative only. Floor plans and specifications may be varied by Burbank without notice, the dimensions are diagrammatic only and a Building Contract with final drawings will display correct dimensions and detail. All designs are the property of Burbank and must not be used, reproduced, copied or varied, wholly or in part without written permission from an authorised Burbank representative. Copyright Burbank Australia (QLD) Pty Ltd. ABN 77 103 014 615. QBCC 1046544.

Call 13 BURBANK
Visit burbank.com.au



Option Kitchen01

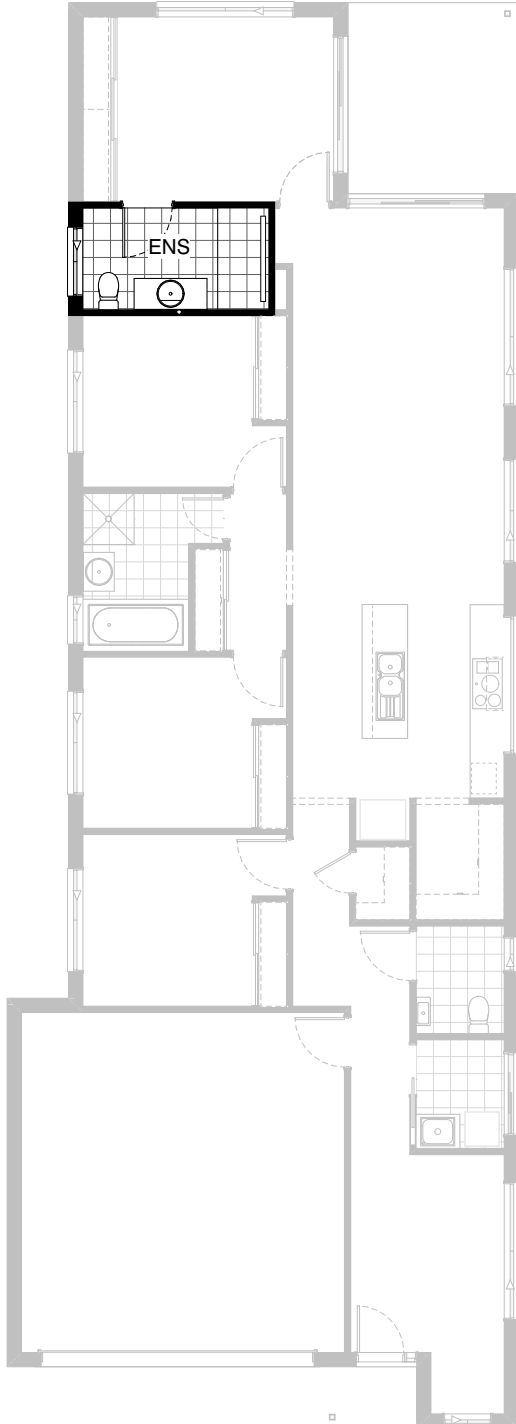
Provide Kitchen upgrade option, including:
2No. 900mm overhead cupboards,
1No. 600mm overhead cupboard,
1No. 900mm laminate open shelf over Ref. space.



Option Kitchen02

Provide Galley-style Kitchen upgrade option, including:
 additional 800mm deep benchtop,
 relocated Ref. space with 900mm laminate open shelf,
 900mm under bench oven,
 900mm retractable rangehood,
 dishwasher provision,
 microwave provision with pot drawer,
 1No. 450mm drawer unit,
 1No. 900mm base cupboard,
 1No. 700mm base cupboard,
 2No. 800mm base cupboards,
 2No. 400mm base cupboards,
 2No. 800mm overhead cupboards,
 2No. 400mm overhead cupboards.

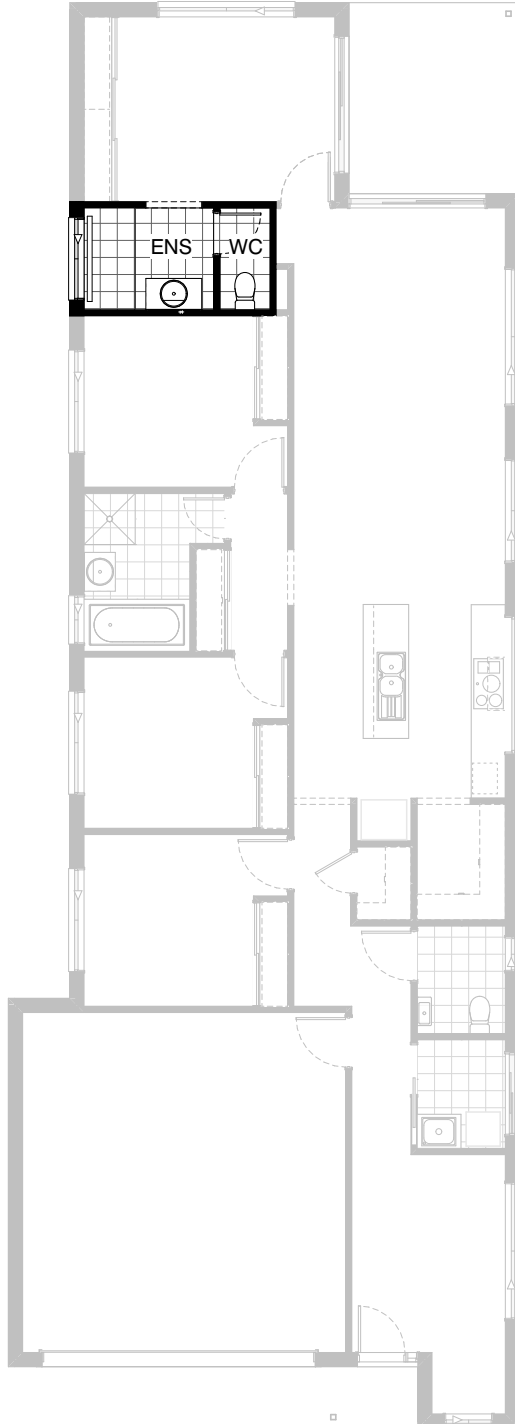
Note:
 Remove 1No. run of 300mm shelving from WIL.



Option Ensuite01

Provide Ensuite upgrade option, including:
1790mm x 900mm tiled shower base with grate drain in lieu of standard 900mm x 900mm tiled shower base.

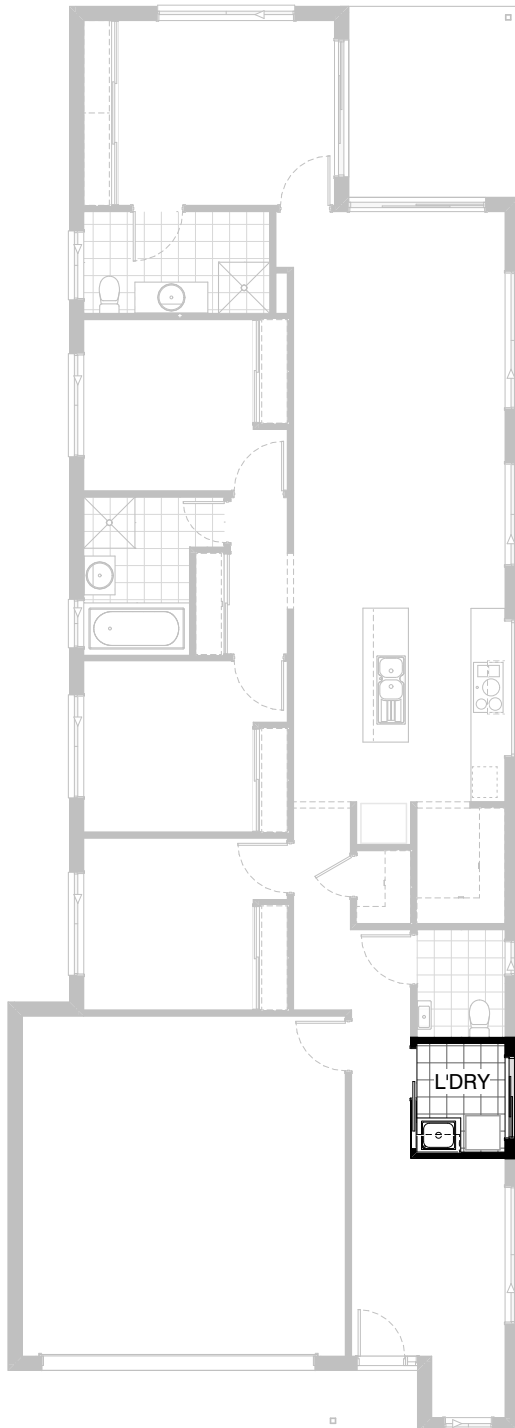
Note:
870mm hinged door moves to allow space for towel rail.



Option Ensuite02

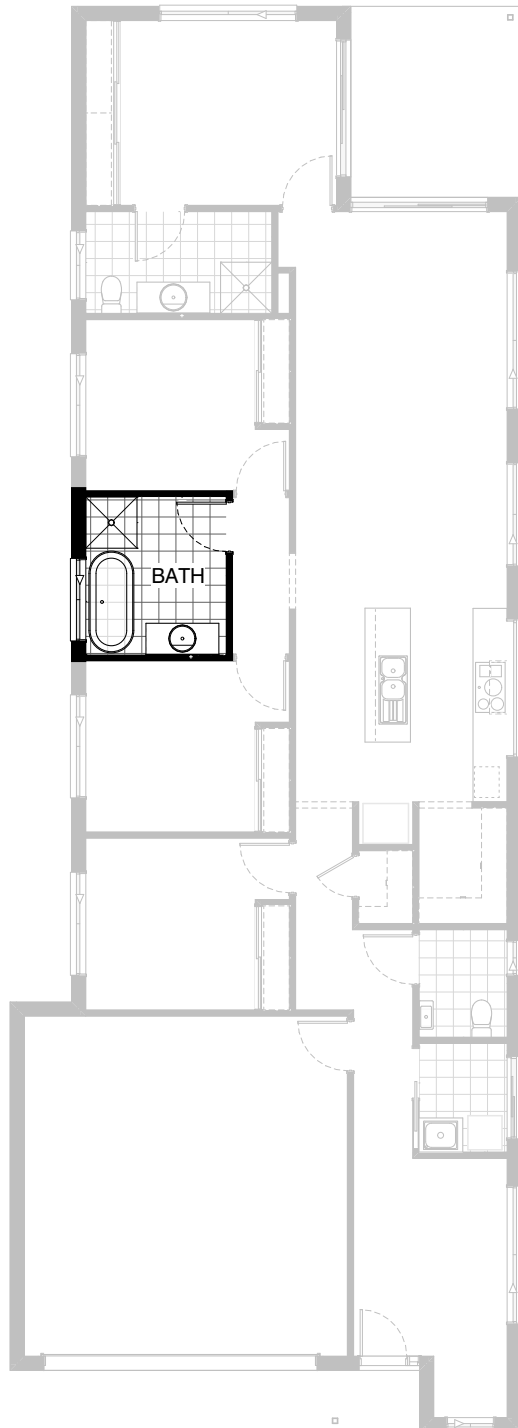
Provide Ensuite upgrade option with rearranged layout, including:
1790mm x 900mm tiled shower base with grate drain,
982mm vanity with single basin,
enclose WC with 720mm hinged door,
350mm x 1450mm aluminium sliding window over shower
in lieu of 1027mm x 1210mm aluminium sliding window.

Note:
Remove 870mm hinged door and provide bulkhead opening.



Option Laundry01

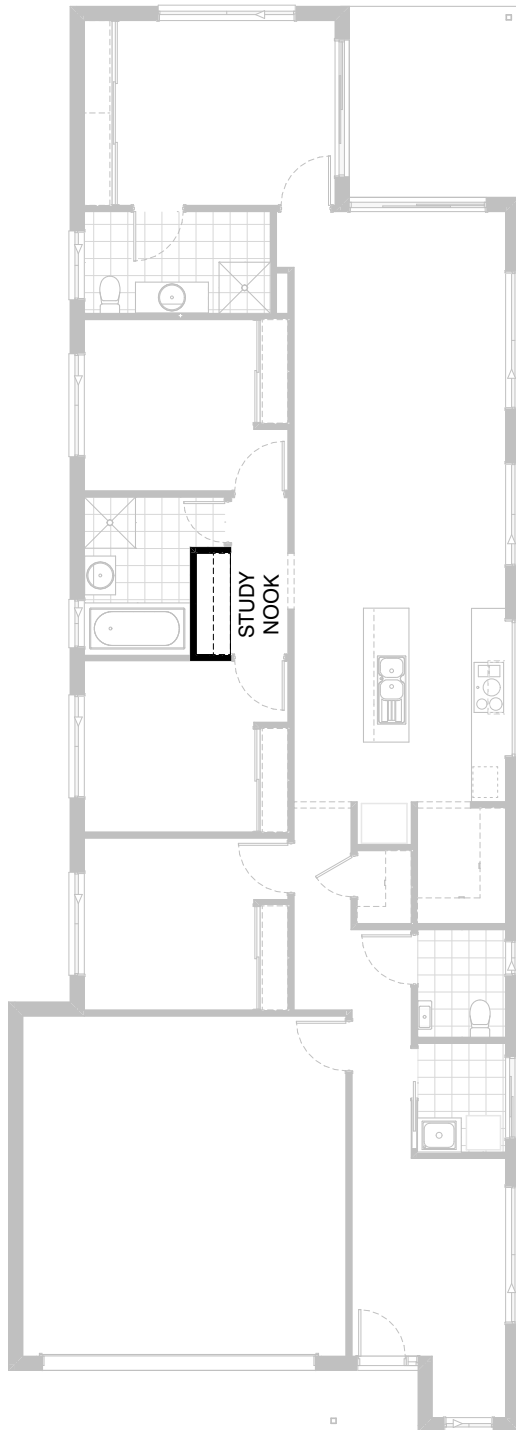
Provide Laundry upgrade option, including:
1No. 700mm overhead cupboard,
tiled splashback as required.



Option Internal01

Provide Bathroom upgrade option which removes Linen cupboard, including:
1780mm freestanding bath,
1282mm vanity with single basin,
1200mm x 1450mm aluminium sliding window
in lieu of standard, additional tiled flooring as required.

Note:
Option not available with Internal02



Option Internal02

Provide Study Nook in lieu of Linen cupboard with built-in joinery, including:
600mm deep 32mm thick laminate desk,
1No. 450mm wide drawer unit beneath desk,
2No. 300mm deep 60mm thick open shelves over.
Remove sliding doors and Linen shelves.

Note: Option not available with Internal01