

PARISH 42

5 3.5 2

Total squares 42.4sq

B
SERIES

Minimum
Lot Width
14.0m

Minimum
Lot Length
28.0m



Design Dimensions
11,990mm(W) x 21,110mm(L).

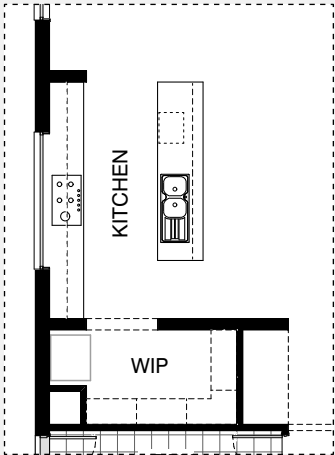
Facade Choices
Fullerton, Huntington, Moorpark,
Oakwood, Pallsades, Redlands, Riverside.
Details based on Riverside façade floorplan (illustrated)

DESIGN DIMENSIONS

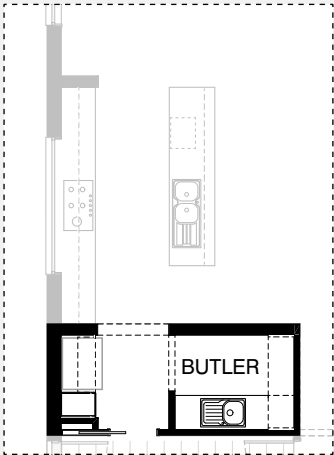
Residence	338.6m ²	36.4sq
Garage	36.4m ²	3.9sq
Porch	3.3m ²	0.4sq
Alfresco	15.2m ²	1.6sq
Total	393.5m²	42.4sq

Burbank

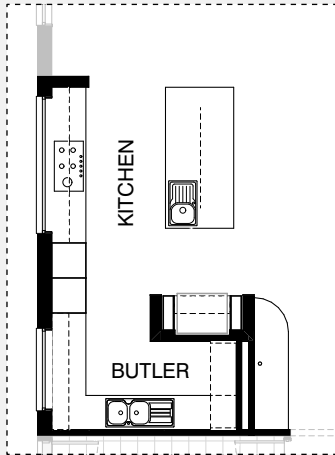
*Copyright conditions. All photos and illustrations are representative only. Floor plans and specifications may be varied by Burbank without notice, the dimensions are diagrammatic only and a Building Contract with final drawings will display correct dimensions and detail. All designs are the property of Burbank and must not be used, reproduced, copied or varied, wholly or in part without written permission from an authorised Burbank representative. Copyright Burbank Australia Pty Ltd. ABN 91 007 099 872. Builders Registration Number CDB-U-52603.



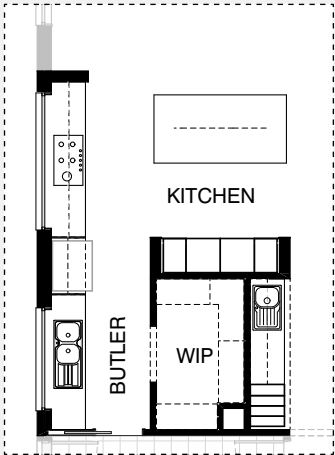
Master Kitchen design



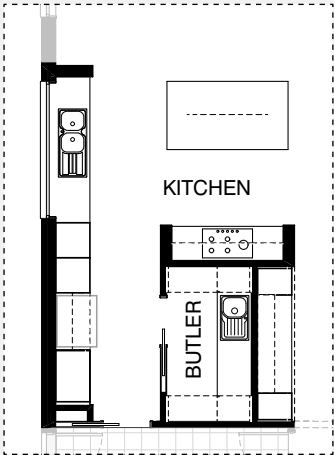
K01



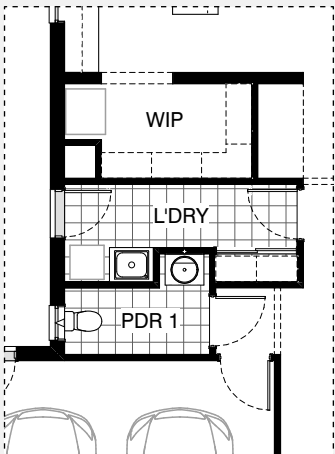
K02



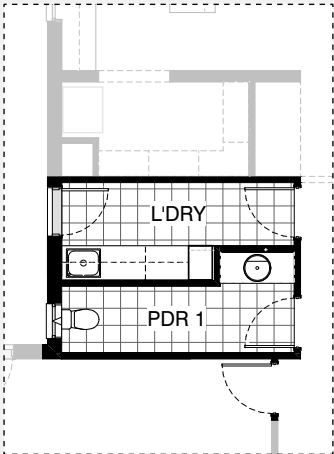
K03



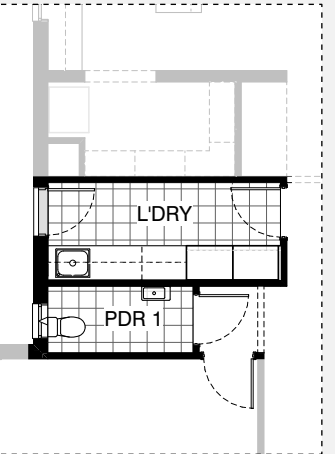
K04



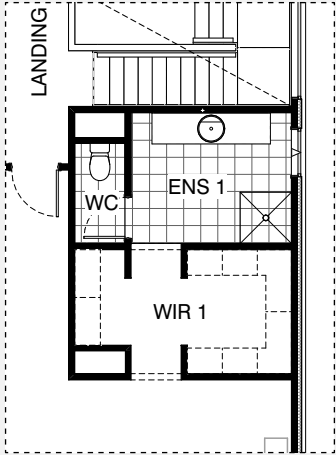
Master Laundry design



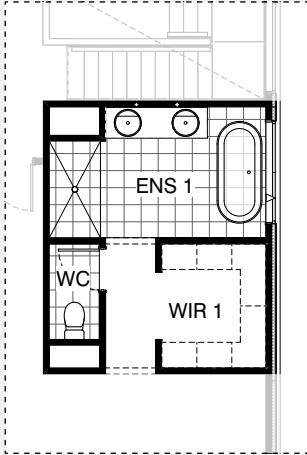
LD01



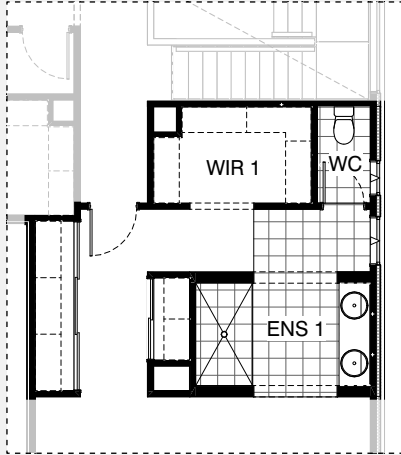
LD02



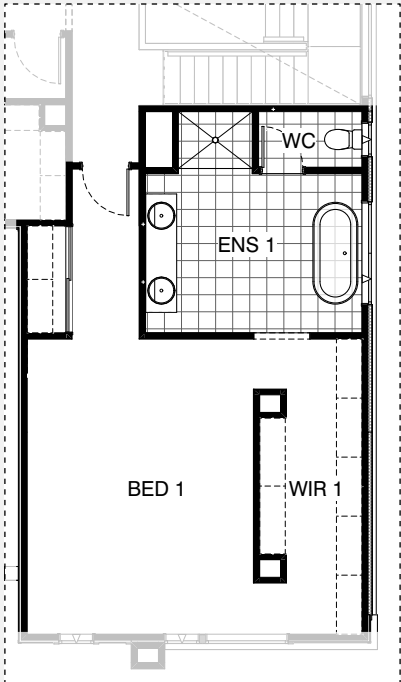
Master Ensuite design



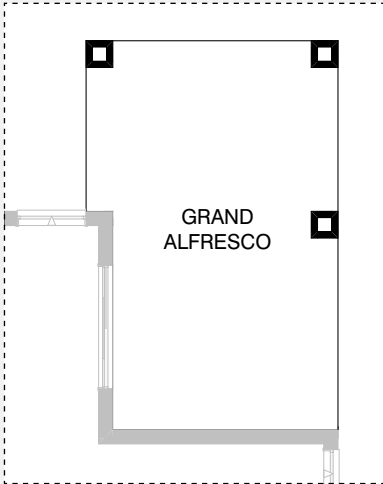
EN01



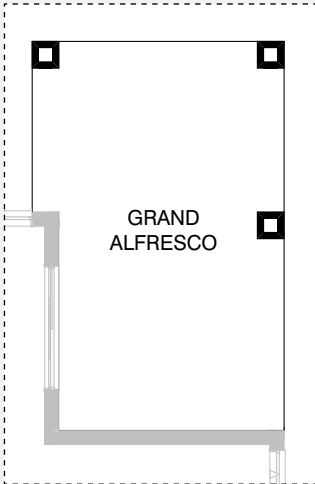
EN02



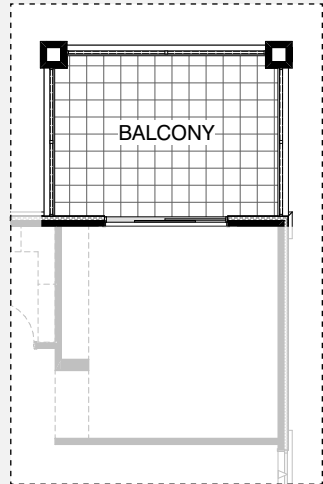
EN03

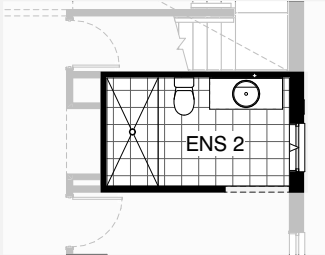


EX01

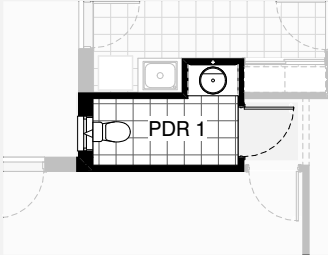


EX02

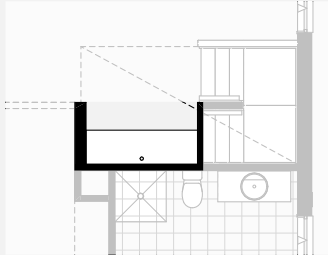




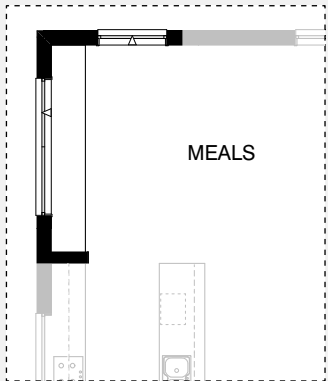
IN01



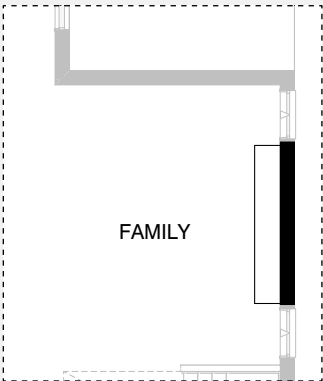
IN02



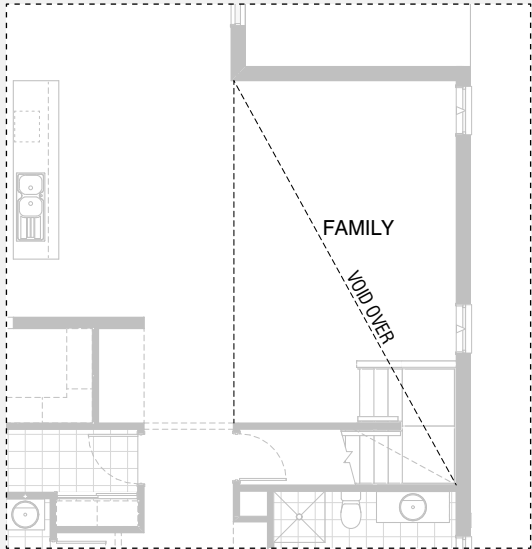
IN03



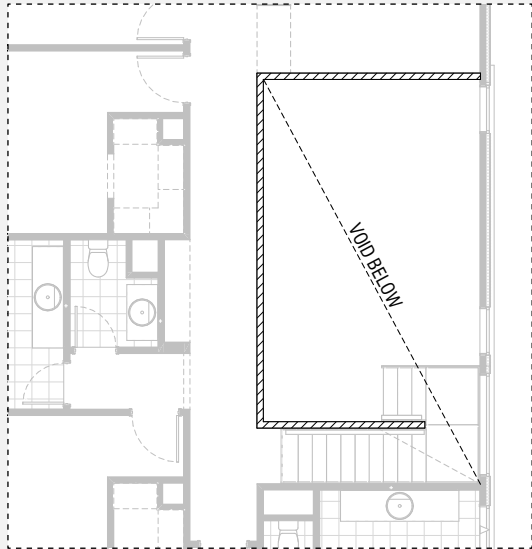
IN04

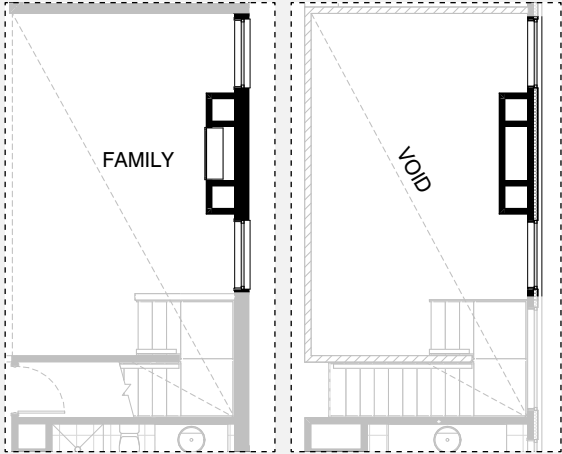


IN05

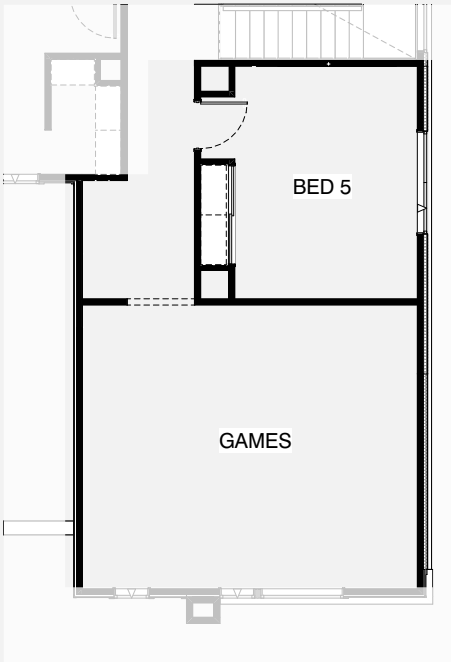
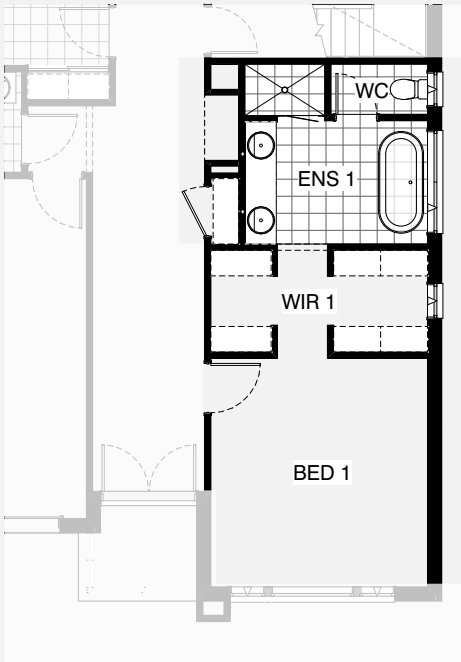


IN06

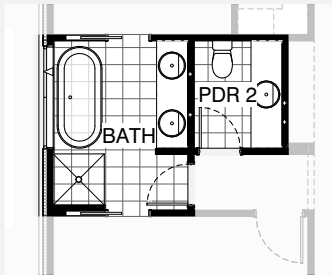




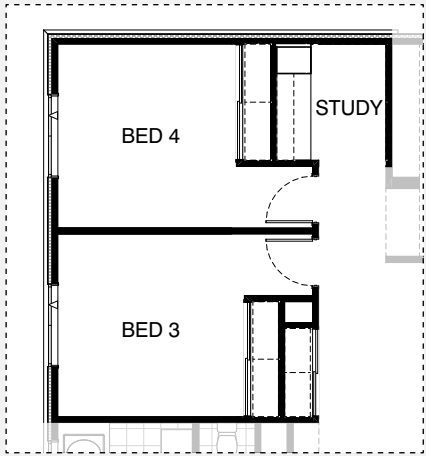
IN07



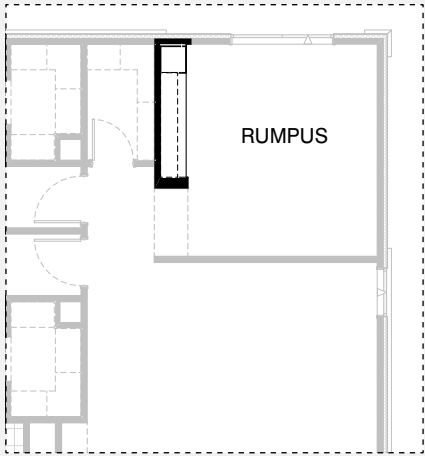
IN08



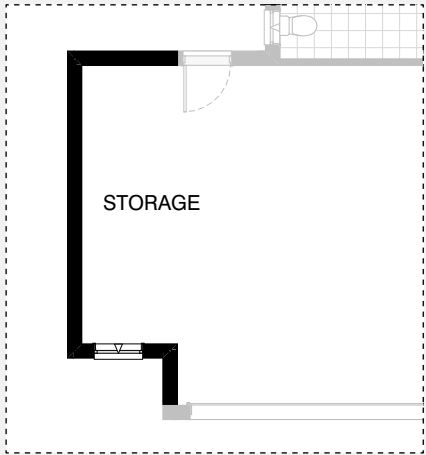
IN09



IN10



IN11



G01

PARISH 42

OPTION DESCRIPTIONS

Option Kitchen01

Provide Butler's Pantry in lieu of Walk-in Pantry, including:
single bowl sink,
1No. 800mm base cupboard,
1No. 400mm base cupboard,
1No. 350mm base cupboard,
1No. open shelf over Ref. space,
1No. 400mm laminated Pantry unit,
1800mm high x 450mm wide adjustable shelving unit.
Adjust plumbing stack as shown, with additional tiled splashback and benchtop to suit.
Provide additional 820mm cavity sliding door access to Laundry.

Option Kitchen02

Provide Kitchen upgrade option with Butler's Pantry in lieu of Walk-in Pantry, and 1200mm deep island bench.
Kitchen includes:
Relocated Ref. space with open shelf over, 900mm cooktop,
900mm retractable rangehood,
3No. 900mm base cupboards,
3No. 800mm base cupboards,
2No. 300mm base cupboards facing Family room,
2No. 900mm overhead cupboards,
2No. 600mm laminate oven towers with microwave provisions,
2No. 180mm laminated wine racks,
1200mm deep benchtop with single bowl sink.
Butler's Pantry includes:
additional L-shaped benchtop and tiled splashback,
1No. 900mm base cupboard,
1No. 900mm corner base cupboard,
1No. 700mm base cupboard,
1No. 300mm base cupboard,
1No. dishwasher provision,
1No. 450mm drawer unit,
double bowl sink,
1No. 1800mm high x 450mm wide adjustable shelving unit,
2No. 300mm deep 60mm thick open shelves,
1No. 514mm x 1450mm aluminium fixed window with no bottom reveal.
Relocate plumbing stack as shown.

Option Kitchen03

Provide Kitchen upgrade option with rotated 3-way benchtop with 1200mm deep island bench, Butler's Pantry in addition to Walk-in Pantry, and built-in Bar facing Family room.
Kitchen includes:
1200mm deep clear island bench,
900mm cooktop,
900mm retractable rangehood,
450mm drawer unit,
5No. 900mm base cupboards,
2No. 300mm base cupboards facing Meals,
2No. 900mm overhead cupboards,
2No. 600mm laminate oven towers with microwave provisions,
2No. 400mm laminated Pantry units.
Butler's Pantry includes:
additional 600mm benchtop with tiled splashback,
1No. laminate open shelf over Ref. space,
1No. 900mm base cupboard,
2No. 400mm base cupboards,
dishwasher provision,

double bowl sink,
1No. 1200mm x 1810mm aluminium fixed window with no bottom reveal over sink.
Provide additional 820mm cavity sliding door access through to Laundry.
Bar includes:
additional 600mm benchtop with tiled splashback,
2No. 900mm base cupboards,
4No. 180mm laminated wine racks,
single bowl sink,
2No. 300mm deep 60mm thick open shelves.

Option Kitchen04

Provide Kitchen upgrade option with rotated 3-way benchtop with 1200mm deep island bench, Butler's Pantry in lieu of Walk-in Pantry, and built-in Study Nook facing Family room.
Kitchen includes:
1200mm deep clear island bench,
900mm cooktop,
900mm retractable rangehood,
450mm drawer unit,
dishwasher provision,
double bowl sink,
2No. 900mm base cupboards,
2No. 800mm base cupboards,
4No. 450mm base cupboards,
2No. 300mm base cupboards facing Meals,
2No. 450mm overhead cupboards,
2No. 600mm laminate oven towers with microwave provisions,
1No. 900mm laminated Pantry unit,
1No. laminate open shelf over Ref. space.
1No. 1200mm x 2410mm aluminium fixed window with no bottom reveal over sink in lieu of standard.
Butler's Pantry includes:
additional 600mm benchtop with tiled splashback,
single bowl sink,
1No. 900mm base cupboards,
2No. 1800mm high x 450mm wide adjustable shelving units,
1No. 820mm cavity sliding door.
Provide additional 820mm cavity sliding door access through to Laundry.
Study Nook includes:
additional 600mm benchtop with tiled splashback,
2No. 450mm laminated Linen units,
2No. 300mm deep 60mm thick open shelves.

Option Laundry01

Provide Laundry upgrade with laminate base and overhead cupboards and inset trough, including:
1No. 700mm base cupboard,
3No. 700mm overhead cupboards,
1No. 450mm laminated Linen unit,
additional 32mm laminate benchtop and tiled splashback to suit.
Bench height increases to 950mm from FFL with open space beneath benchtop to store washer and dryer side-by-side.
Relocate doors to Powder and Garage.
Provide 1No. 1282mm vanity with single basin, including 1 row tiling beneath mirror to suit wall-to-wall benchtop including returns in lieu of standard.



PARISH 42

OPTION DESCRIPTIONS

Option Laundry02

Provide Laundry upgrade with laminate base and overhead cupboards and inset trough, including:
1No. 800mm base cupboard,
3No. 800mm overhead cupboards,
2No. 800mm laminated Linen units,
32mm laminate benchtop and tiled splashback to suit.
Bench height increases to 950mm from FFL with open space beneath benchtop to store washer and dryer side-by-side.
Remove vanity from Powder and provide wall basin.
Toilet pan moves over to 450mm from wall to comply with NCC clearance requirements.

Option Ensuite01

Provide Ensuite and WIR upgrade option, including:
freestanding bath, 1No. 1782mm vanity with
1790mm benchtop and double basins,
1700mm x 900mm wall-to-wall tiled shower base,
and move WC as shown.

Option Ensuite02

Provide Ensuite upgrade option with re-arranged layout, including:
1No. 1782mm vanity with double basins, including 1 row tiling beneath mirror to suit wall-to-wall benchtop including returns,
1800mm x 1000mm wall-to-wall tiled shower base,
enclosed WC with 720mm hinged door,
1No. 1200mm x 610mm aluminium awning window to WC,
1No. 1200mm x 850mm aluminium awning window to Ensuite in lieu of standard,
relocated WIR with 3No. runs of 450mm shelving.
Relocate 820mm hinged door to Bed 1.
Provide additional built-in Robe with sliding doors and 450mm shelf and hanging rail.
Option decreases Bed 1 by 400mm, Robe adjusts to suit.

Option Ensuite03

Provide Ensuite upgrade option with re-arranged layout, including:
freestanding bath,
1No. 2082mm vanity with double basins,
1300mm x 1000mm wall-to-wall tiled shower base,
enclosed WC with 720mm hinged door,
1No. 1029mm x 610mm aluminium awning window to WC,
1No. 1200mm x 1810mm aluminium awning window over bath in lieu of standard.
Relocate WIR to provide 2No. runs of 450mm shelving with hanging rail behind the bed head with 2No. heating stacks as shown.

Option External01

Provide Grand Alfresco to Ground floor, including:
extended structural concrete slab,
2No. additional 470mm x 470mm brick piers and tiled roof over,
Increases length of the home by 3000mm.
Increases area of the home by 13.29m²

Option External02

Provide Grand Alfresco to Ground floor and Balcony to First floor, including:
extended structural concrete slab,
2No. additional double-height 470mm x 470mm brick piers.
Provide tiled Balcony with powder-coated balustrade to First floor,
provide 2095mm x 2170mm aluminium sliding door in lieu of standard window,
extend tiled roof over Balcony.
Increases length of the home by 3000mm.
Increases area of the home by 26.65m²

Option Internal01

Provide Guest Ensuite upgrade option, including:
1900mm x 900mm tiled wall-to-wall shower base in lieu of standard.

Option Internal02

Provide Powder room upgrade option, including:
1No. 782mm vanity with single basin, including 1 row tiling beneath mirror to suit wall-to-wall benchtop including returns in lieu of standard.

Option Internal03

Provide Study Nook under stairs with raked ceiling and built-in joinery in lieu of Storage area, including:
600mm deep 32mm thick benchtop,
1No. 600mm drawer unit under desk.
Remove 870mm hinged door.

Option Internal04

Provide built-in joinery to Meals to create Daybed, including:
600mm deep 32mm thick laminate benchtop,
5No. 700mm TV unit drawers,
1No. 514mm x 2410mm aluminium awning window in lieu of standard.
Move 1800mm x 1210mm aluminium awning window as shown to accommodate.

Option Internal05

Provide built-in joinery to Family room, including:
450mm deep 32mm thick laminate benchtop,
3No. 900mm TV unit cupboards.

Option Internal06

Provide double height Void over Family area by removing Activity above.
Provide 2No. 1800mm x 850mm aluminium fixed windows to First floor in lieu of standard,
provide extension to 1020mm high dwarf wall balustrade.

Option Internal07

Provide Real Flame Inspire 900 gas fire place
400mm off floor level in a 210mm x 500mm boxed out plaster wall with a 4 sided black fascia to Family room side wall with capped gas point, option with double height stud and plaster voids,
2No. 2057mm x 1210mm aluminium fixed windows to Ground floor and
2No. 1200mm x 1210mm aluminium fixed windows to First floor in lieu of standard.

Note:

Option only available with Internal06.

Option Internal08

Provide floor plan option which relocates Bed 1, Ensuite and WIR to the Ground floor in lieu of Living and Guest suite.
Provide additional Bedroom, Study Nook and Games room to First floor in lieu of Bed 1.

New Ensuite includes:

1No. 2082mm vanity with double basins, including 1 row tiling beneath mirror to suit wall-to-wall benchtop including returns,
1400mm x 900mm wall-to-wall tiled shower base,

Free standing Bath,

enclosed WC with 720mm hinged door,

1No. 1029mm x 610mm aluminium awning window to WC,

1No. 1200mm x 1810mm aluminium awning window to Ensuite 1 in lieu of standard.

Provide 1200mm x 610mm aluminium awning window to new WIR.

Provide additional Linen cupboard with 870mm hinged door and 4No. 450mm shelving.

1No. 1200mm x 1810mm aluminium awning window to new Bedroom.



PARISH 47

OPTION DESCRIPTIONS

Option Internal09

Provide Bathroom and Powder room upgrade option, including: freestanding bath, 900mm x 900mm tiled shower base, 1No. 1782mm vanity with double basins, including 1 row tiling beneath mirror to suit wall-to-wall benchtop including returns, 1No. 1782mm vanity with single basin offset to the left, including 1 row tiling beneath mirror to suit wall-to-wall benchtop including returns, Provide 1No. 1200mm x 1810mm aluminium awning window in lieu of standard and 2No. 720mm cavity sliding doors to Bathroom to create 'Jack n Jill' style Ensuites.

Option Internal10

Provide floor plan option with built-in joinery to Study Nook in lieu of WIL, including: 2No. 60mm floating shelves above, 600mm deep 32mm thick laminate benchtop, 1No. 450mm drawer unit under desk, 1No. 450mm laminated Linen unit. Provide 2No. built-in Robes in lieu of WIR's to Beds 3 and 4 with built-in Linen also. Bed 3 increases by 140mm as shown.

Option Internal11

Provide built-in joinery to Rumpus, including: 450mm deep 32mm thick laminate benchtop, 2No. 900mm T.V. unit cupboards, 2No. 300mm deep 60mm thick open shelves over, 1No. 450mm laminated Linen unit.

Option Garage01

Provide extension to Garage to create additional Storage area including, 1No. 2057mm x 850mm aluminium awning feature window. Increases width of the home by 1680mm. Increases area of the home by 9.07m²

