

FLOORPLAN OPTIONS

We personalise our floorplans. Talk to us about our huge range of ready-to-go design options or simply visit www.burbank.com.au/south-australia for more details.

Listed details based on Coventry facade floorplan (illustrated)

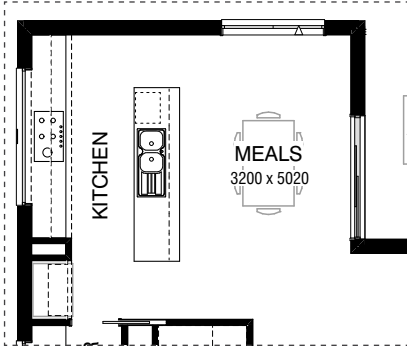
Facades available:

Coventry, Avondale, Halifax,	
Northampton, Seacliff, Westerley,	
Weston, Windermere	
Overall home width	10.97m
Overall home length	20.75m

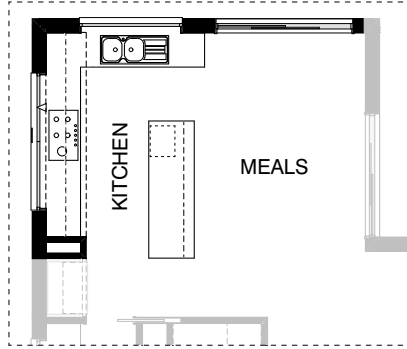
Residence	328.8m ²	35.4sq
Garage	37.4m ²	4.0sq
Porch	3.1m ²	0.3sq
Alfresco	12.9m ²	1.4sq
Total	298.2m²	32.1sq

*Copyright conditions. All photos and illustrations are representative only. Floor plans and specifications may be varied by Burbank without notice, the dimensions are diagrammatic only and a Building Contract with final drawings will display correct dimensions and detail. All designs are the property of Burbank and must not be used, reproduced, copied or varied, wholly or in part without written permission from an authorised Burbank representative. Copyright Burbank Australia (SA) Pty Ltd. ABN 96 165 533 406. BLD 266709.

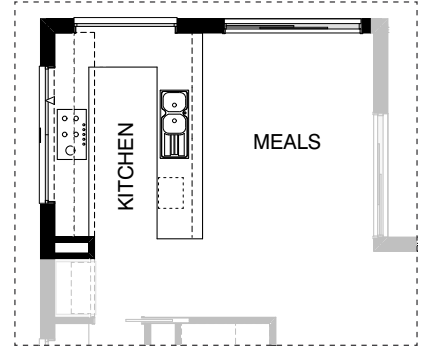
Call 13 BURBANK
Visit burbank.com.au



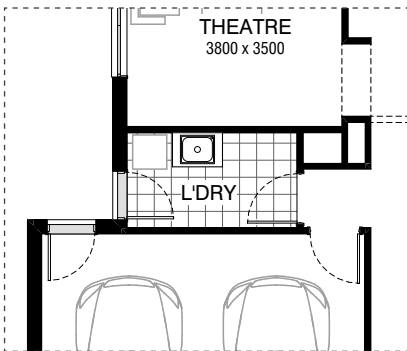
Master Kitchen Design



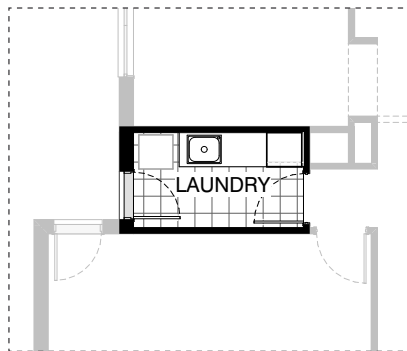
K01



K02



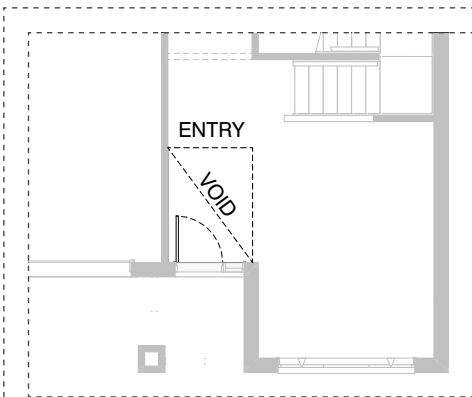
Master Laundry Design



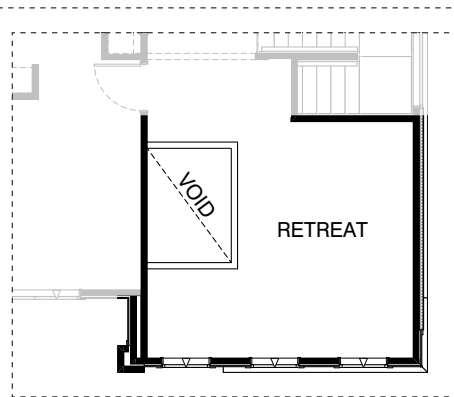
LD01



EX01

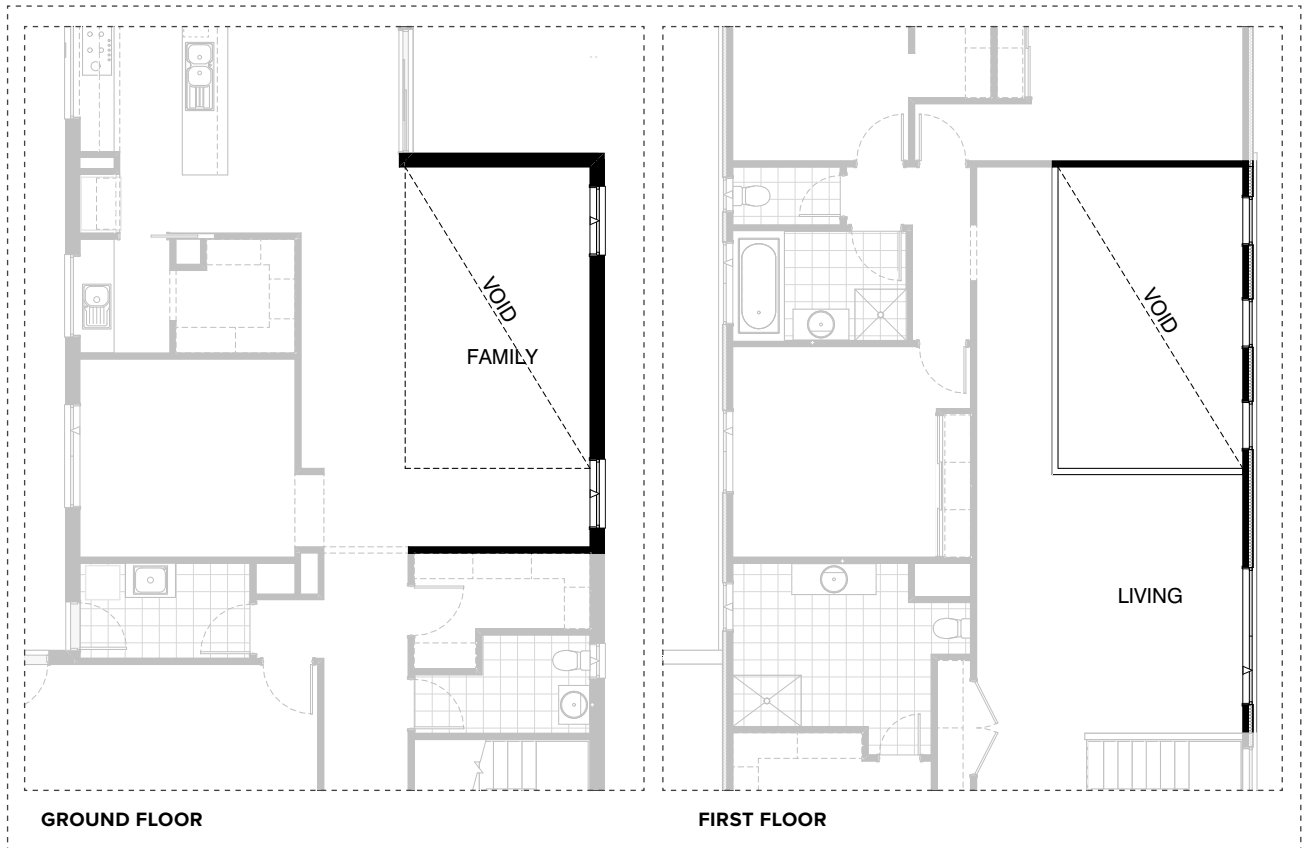


GROUND FLOOR

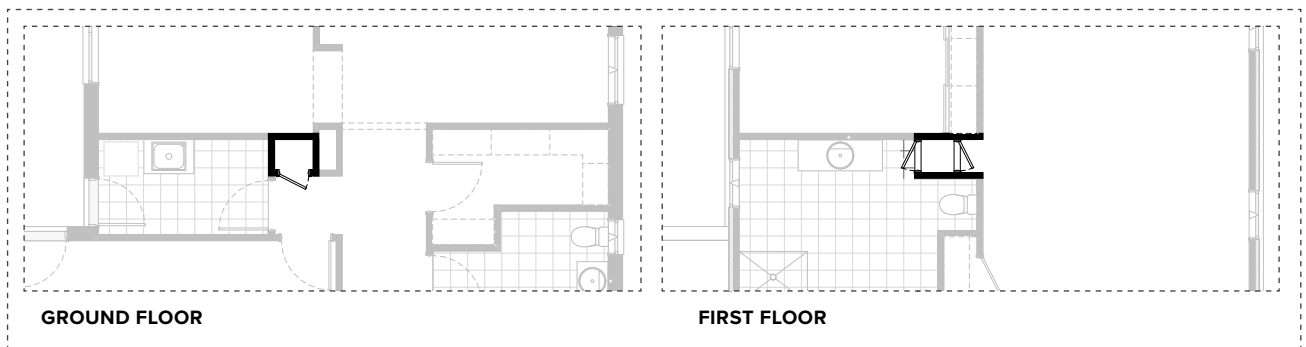


FIRST FLOOR

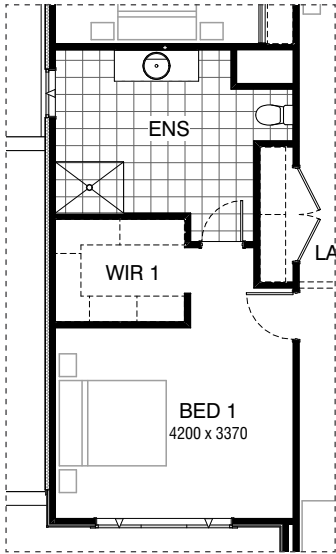
IN01



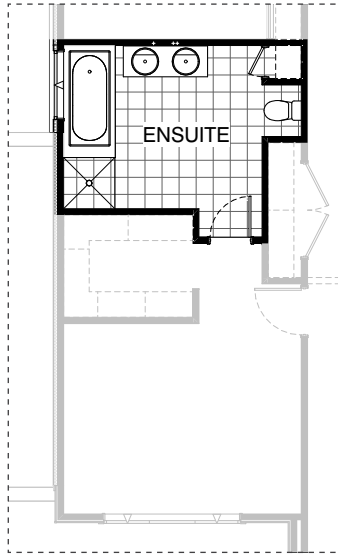
IN02



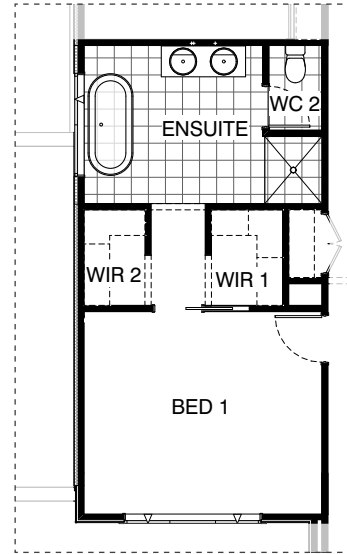
IN03



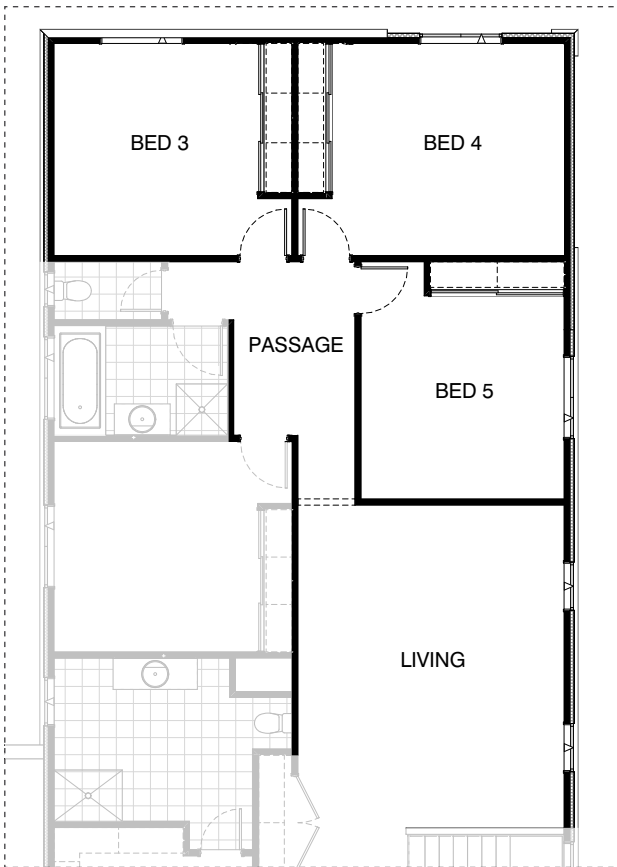
Master Ensuite Design



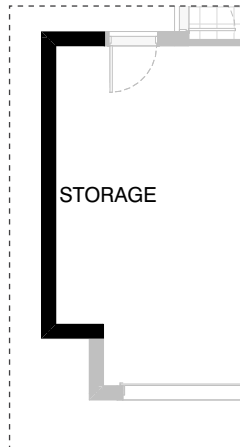
EN01



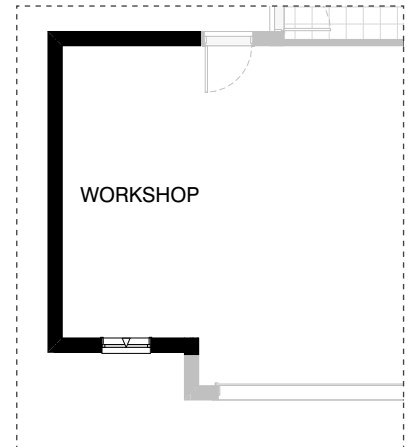
IN04



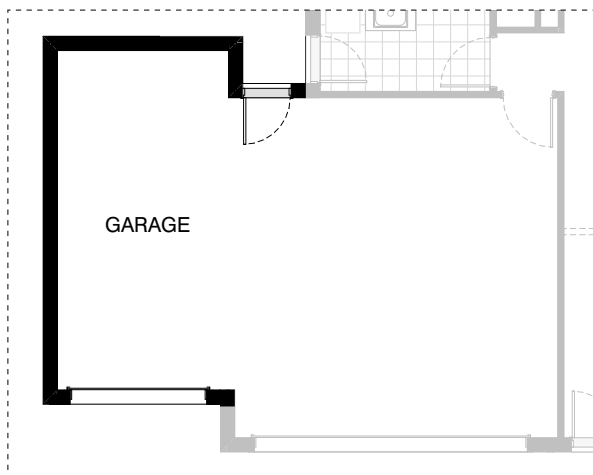
IN05



G01



G02



G03

OPTION DESCRIPTIONS**Option Kitchen01**

Provide 'L' shaped Kitchen Option including:
2No. 450mm base cupboards,
1No. 800mm base cupboard,
1No. 900mm base cupboard with inset double bowl sink,
1No. 700mm base cupboard,
1No. 600mm base cupboard,
1No. 900mm x 900mm corner base cupboard,
1No. 900mm under bench oven with 900mm gas cooktop and 900mm retractable rangehood.
1No. laminated DW provision,
1No. 300mm base cupboard,
1No. laminated MW provision with pot drawer below,
1No. 450mm drawer,
2No. 600mm overhead cupboards,
2No. 700mm overhead cupboards,
1No. 514mm x 1810mm aluminium fixed window with no bottom reveal,
Relocate existing 514mm x 2410mm aluminium fixed window with no bottom reveal to Kitchen by 120mm to suit.
Provide additional 1No. 2095mm x 2410mm aluminium sliding door to Meals in lieu of standard window,
additional tiled splash back and benchtop to suit.
Relocate Kitchen void by 10mm to suit cabinetry.

Option Kitchen02

Provide 'U' shaped Kitchen including:
1No. 450mm base cupboard,
1No. 900mm x 900mm corner base cupboard,
2No. 900mm base cupboards,
1No. 700mm base cupboard,
1No. 600mm base cupboard,
1No. 800mm blind base carcass with 1No. 350mm door, 1No. 900mm under bench oven with 900mm gas cooktop and 900mm retractable rangehood,
1No. laminated DW provision,
1No. laminated MW provision with pot drawer below,
1No. 450mm drawer,
2No. 600mm overhead cupboards,
2No. 700mm overhead cupboards,
1No. 514mm x 1810mm aluminium fixed window with no bottom reveal.
Provide additional 1No. 2095mm x 2410mm aluminium sliding door to Meals in lieu of standard window,
additional tiled splashback and benchtop to suit.
Relocate Kitchen void by 10mm to suit cabinetry.

Option Laundry01

Provide Laundry option including: 1No. 600mm laminated Linen unit, 1No. 700mm base cupboard, 1No. 800mm base cupboard, additional tiled splash back and benchtop to suit.

Option External01

Provide 1No. 2107mm x 2416mm x 2674mm aluminium corner stacker sliding door to Alfresco.

Option Internal01

Provide Void area above Entry including 1020mm high plaster wall balustrade to Retreat.

Option Internal02

Provide Void area above Family including:
1020mm high plaster wall balustrade to Living,
3No. 1800mm x 850mm aluminium fixed windows with plaster reveals to Void in lieu of standard and
provide 1No. 1800mm x 2410mm aluminium awning window to Living in lieu of standard.

Option Internal03

Provide Laundry Chute in lieu of Voids including 520mm doors.
Note:
Provide additional stud wall to chute option not available with Internal04.

Option Internal04

Provide Ensuite & WIR including:
increase Bed 1 in length by 210mm,
decrease Walk In Robe, Ensuite & Linen in length by 120mm. Provide additional Walk In Robe to suit with 450mm deep shelf. Provide 1No. 820 cavity sliding door between WIR 1 & 2 and Bed 1. 1No. 720mm hinged door to enclosed Wc to Ensuite.
Provide 1780mm freestanding bath,
1180mm x 1000mm tiled shower base in lieu of standard,
1482mm vanity with double basins,
1No. 1200mm x 1810mm aluminium awning window to Ensuite.
Note:
option not available with Internal03.

Option Internal05

Provide Bed 5 option by reducing Living width to 5700mm in lieu of standard,
Delete 1No. 1800mm x 850mm aluminium awning window to Living and provide 1No. 1200mm x 1450mm aluminium awning window to Bed 5 and additional Robe to suit with 450mm deep shelf.
Increase Bed 4 in length by 360mm.
Delete WIR in Bed 3 and provide additional Robe to suit with 450mm deep shelf.
Increase Bed 3 in length by 490mm.

Option Ensuite01

Provide Ensuite option including:
Additional basin to vanity unit,
1No. 1675mm bath with tiled hob,
1No. 900mm x 900mm tiled shower base in lieu of standard,
1No. 1200mm x 1210mm aluminium awning window in lieu of standard,
Provide 690mm deep Linen cupboard with 4No. shelves and 1No. 520mm hinged door in lieu of Void.

Option Garage01

Provide extension to Garage to create additional Storage area. Increases width by 840mm. Increases area by 4.54m².

Option Garage02

Provide extension to Garage to create Workshop area including:
1No. 1800mm x 850mm aluminium awning feature window.
Increases width by 2400mm. Increases area by 13.54m².

Option Garage03

Provide triple car Garage including: 1No. 2140mm x 2410mm approx. garage door as per colour selection. Increases width by 3120mm. Increases area by 20.51m².