

GLENMONT 23

4 2 2

Total squares 22.5sq



B
SERIES

Minimum Lot Width
12.5m

Minimum Lot Length
28.0m

Design Dimensions
11,030mm(W) x 21,590mm(L),

Facade Choices
Brentwood, Glendale, Inglewood,
Malibu, Northridge, Pasadena, Santa Monica.
Details based on Inglewood façade floorplan (illustrated)

DESIGN DIMENSIONS

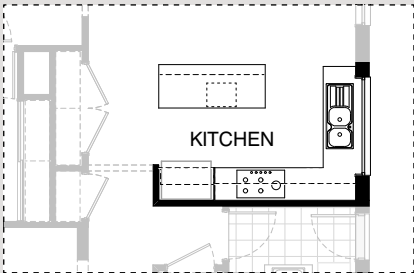
Residence	166.6m ²	17.9sq
Garage	36.6m ²	3.9sq
Porch	5.8m ²	0.6sq
Total	208.7m²	22.5sq

Burbank

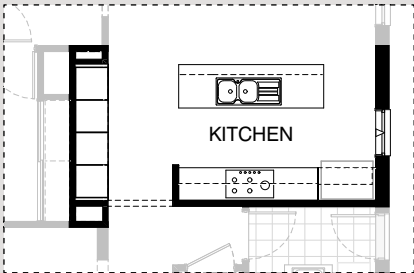
*Copyright conditions. All photos and illustrations are representative only. Floor plans and specifications may be varied by Burbank without notice, the dimensions are diagrammatic only and a Building Contract with final drawings will display correct dimensions and detail. All designs are the property of Burbank and must not be used, reproduced, copied or varied, wholly or in part without written permission from an authorised Burbank representative. Copyright Burbank Australia Pty Ltd. ABN 91 007 099 872. Builders Registration Number CDB-U-52603.



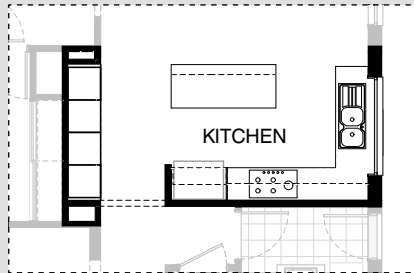
KITCHEN OPTIONS



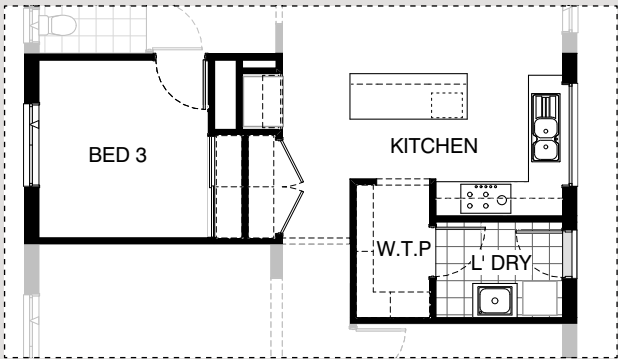
K01



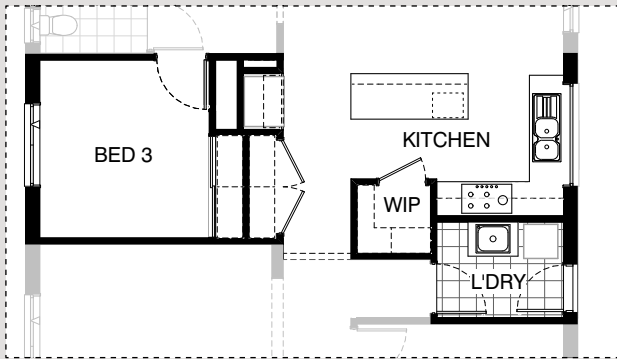
K02



K03

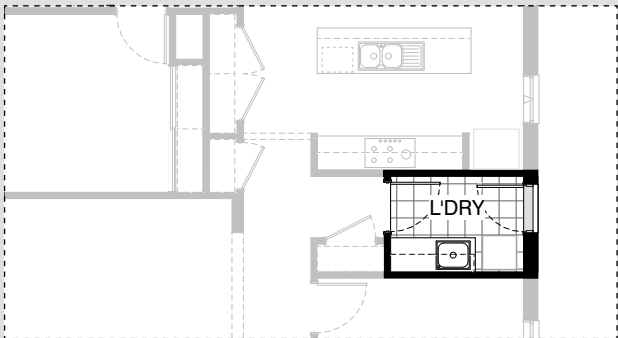


K04

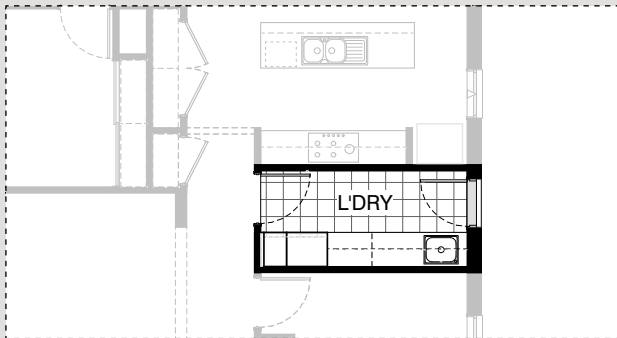


K05

LAUNDRY OPTIONS



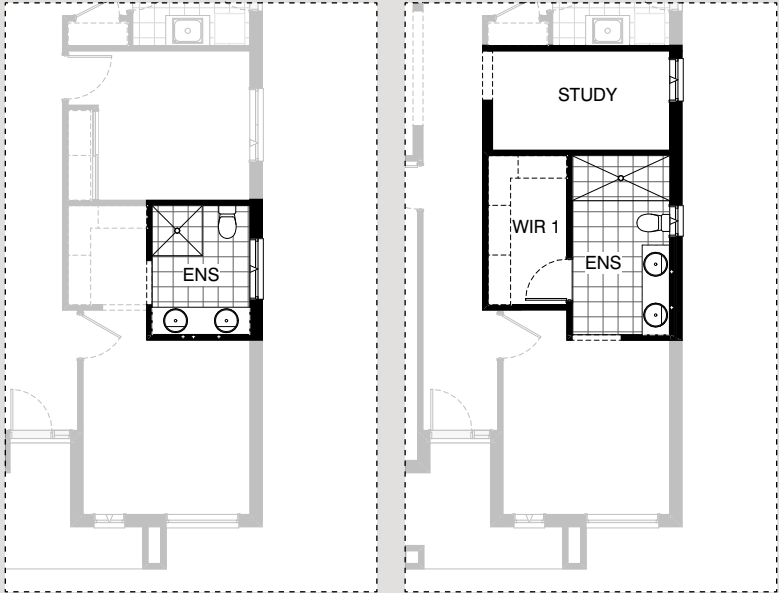
L01



L02



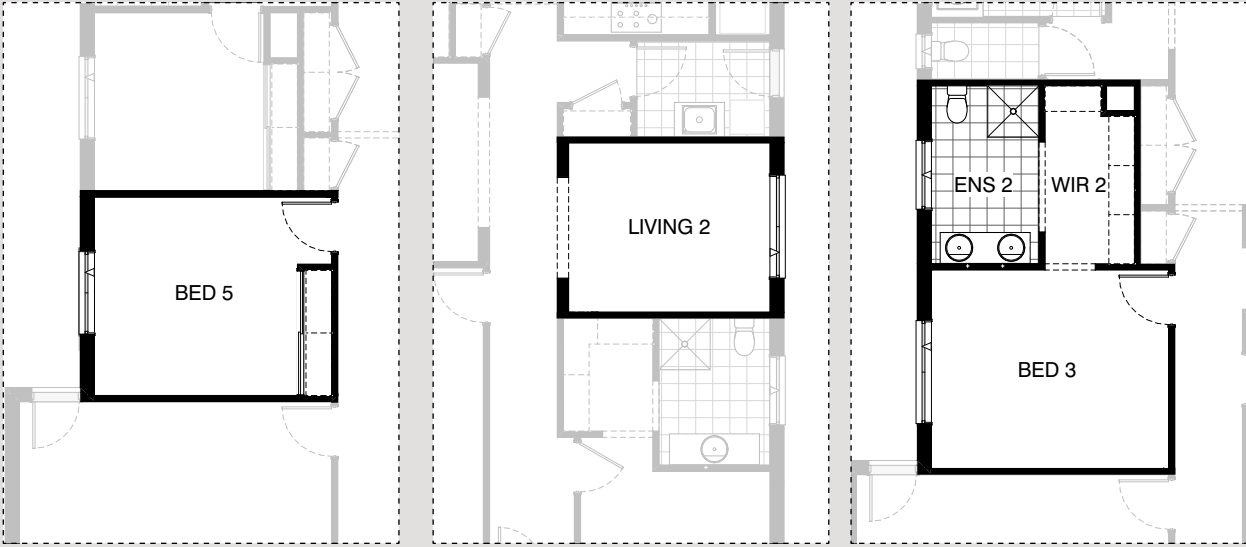
ENSUITE OPTIONS



EN01

EN02

INTERNAL OPTIONS



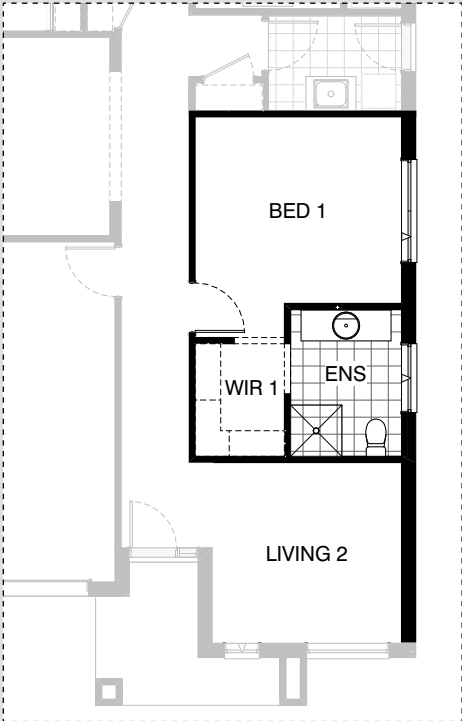
IN01

IN02

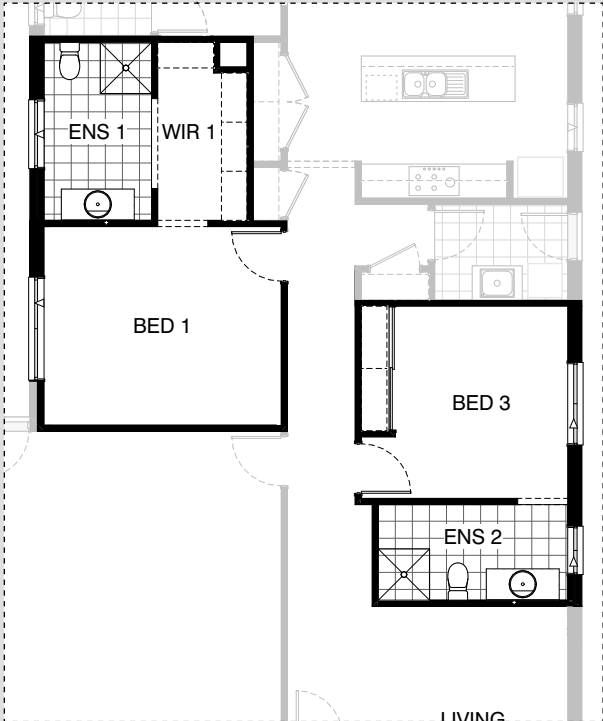
IN03



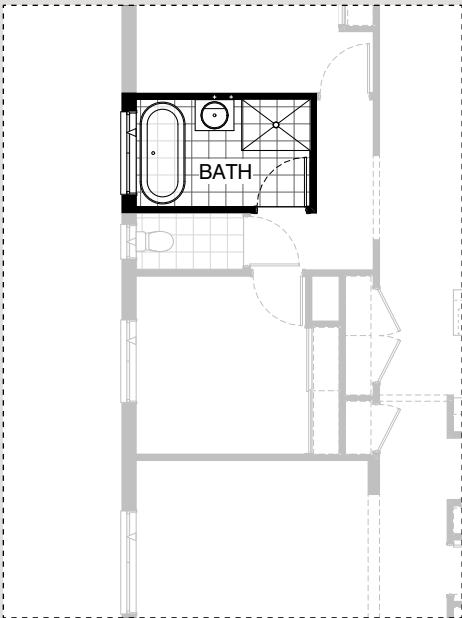
INTERNAL OPTIONS



IN04



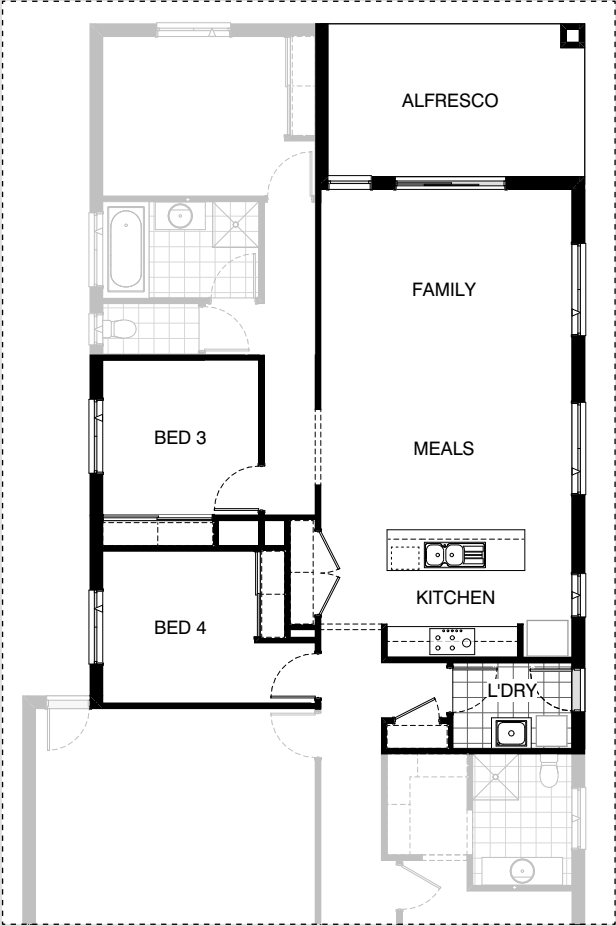
IN05



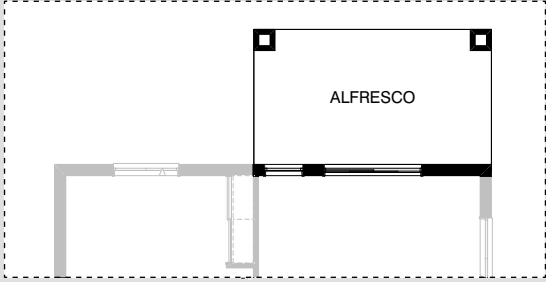
IN06



EXTERNAL OPTIONS

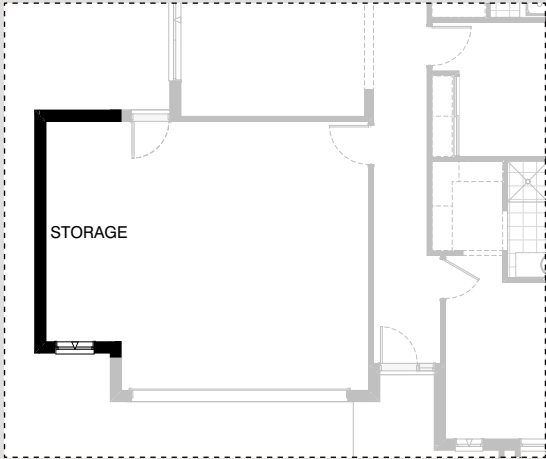


EX01



EX02

GARAGE OPTIONS



G01

GLENMONT 23

OPTION DESCRIPTIONS

Kitchen Option 01

Provide L-shaped Kitchen upgrade option with clear island bench and sink moved to exterior wall, including:

1No. 900mm retractable rangehood,
1No. 900mm underbench oven and cooktop,
1No. double bowl sink,
1No. 450mm drawer unit,
1No. dishwasher provision,
1No. microwave provision with pot drawer,
1No. 900mm base cupboard,
1No. 900mm corner base cupboard,
1No. 800mm base cupboard,
2No. 400mm base cupboards,
1No. 800mm overhead cupboard,
1No. 450mm overhead cupboard,
1No. 400mm overhead cupboard,
1No. 980mm laminated open shelf over Ref. space, additional 20mm stone benchtop and tiled splashback to suit.

Provide 1200mm x 1810mm aluminium fixed window with no bottom reveal over sink in lieu of standard.

Kitchen Option 02

Provide Kitchen upgrade option with built-in joinery, including:

1No. 900mm retractable rangehood,
1No. 900mm cooktop,
1No. 450mm drawer unit,
1No. dishwasher provision,
1No. double bowl sink,
2No. 900mm base cupboards,
2No. 800mm base cupboards,
1No. 600mm base cupboard,
2No. 800mm overhead cupboards,
1No. 990mm laminated open shelf over Ref. space,
2No. 600mm laminate oven towers with microwave provisions,
2No. 600mm laminated Pantry units.

Bulkhead relocated as shown.

Note:

Not available with External01

Kitchen Option 03

Provide L-shaped Kitchen upgrade option with built-in joinery, clear island bench and sink moved to exterior wall, including:

1No. 900mm retractable rangehood and cooktop,
1No. double bowl sink,
1No. 450mm drawer unit,
1No. dishwasher provision,
1No. 900mm base cupboard,
1No. 900mm corner base cupboard,
1No. 800mm base cupboard,
2No. 400mm base cupboards,
1No. 800mm overhead cupboard,
1No. 450mm overhead cupboard,
1No. 400mm overhead cupboard,
1No. 980mm laminated open shelf over Ref. space,
2No. 600mm laminate oven towers with microwave provisions,
2No. 600mm laminated Pantry units.
additional 20mm stone benchtop and tiled splashback to suit.

Provide 1200mm x 1810mm aluminium fixed window with no bottom reveal over sink in lieu of standard.

Bulkhead relocated as shown.

Note:

Not available with External01

Kitchen Option 04

Provide L-shaped Kitchen upgrade option with Walk-through Pantry, clear island bench and sink moved to exterior wall, including:

1No. 900mm retractable rangehood,
1No. 900mm underbench oven and cooktop,
1No. double bowl sink,
1No. 450mm drawer unit,
1No. dishwasher provision,
1No. microwave provision with pot drawer,
2No. 900mm base cupboard,
1No. 900mm corner base cupboard,
1No. 400mm base cupboard,
1No. 850mm overhead cupboard,
1No. 400mm overhead cupboard,
1No. 920mm laminated open shelf over relocated Ref. space,
additional 20mm stone benchtop and tiled splashback to suit.

Provide 1200mm x 1810mm aluminium fixed window with no bottom reveal over sink in lieu of standard.

Provide 1No. 450mm shelving and

1No. 300mm shelving to Walk-through Pantry.

Relocate built-in Linen cupboard in lieu of Pantry/Coats and provide 2No. 820mm hinged doors.

Robe to Bed 3 decreases to accommodate new

Ref. space and Return Air duct and provided 150mm bulkhead to Ref. space

Note:

Not available with Internal03, Internal05 & External01

Kitchen Option 05

Provide L-shaped Kitchen upgrade option with Walk-in Pantry, clear island bench and sink moved to exterior wall, including:

1No. 900mm retractable rangehood,
1No. 900mm underbench oven and cooktop,
1No. double bowl sink,
1No. 450mm drawer unit,
1No. dishwasher provision,
1No. microwave provision with pot drawer,
2No. 900mm base cupboards,
1No. 900mm corner base cupboard,
1No. 400mm base cupboard,
1No. 850mm overhead cupboard,
1No. 400mm overhead cupboard,
1No. 1000mm laminated open shelf over relocated Ref. space, additional 20mm stone benchtop and tiled splashback to suit.

Provide 1200mm x 1810mm aluminium fixed window with no bottom reveal over sink in lieu of standard.

Provide 1No. 450mm shelving and

1No. 300mm shelving to Walk-in Pantry and

820mm hinged door.

Laundry flips to accommodate.

Relocate built-in Linen cupboard in lieu of Pantry/Coats and provide 2No. 820mm hinged doors.

Robe to Bed 3 decreases to accommodate new Ref space and

Return Air duct and

provided 150mm bulkhead to Ref. space

Note:

Not available with Internal03, Internal05 & External01



GLENMONT 23

OPTION DESCRIPTIONS

Laundry Option 01

Provide Laundry upgrade with laminate base and overhead cupboards with inset trough, including:
2No. 700mm base cupboards,
2No. 700mm overhead cupboards,
32mm laminate benchtop and tiled splashback to suit.

Laundry Option 02

Provide Laundry upgrade with laminate base and overhead cupboards and inset trough, including:
1No. 800mm base cupboard,
3No. 800mm overhead cupboards,
1No. 700mm laminated Linen unit,
1No. 400mm laminated Broom unit,
32mm laminate benchtop and tiled splashback to suit.
Increase benchtop height to 950mm and provides open space under bench to store washing machine and dryer side-by-side.
Relocate hinged access door to Laundry and remove built-in Linen cupboard.

Ensuite Option 01

Provide Ensuite upgrade option including:
1No. 1782mm vanity with double basins, including 1 row tiling beneath mirror to suit wall-to-wall benchtop including returns,
1000mm x 1000mm tiled shower base.

Ensuite Option 02

Provide Ensuite upgrade option with Study in lieu of Bed 4, including:
1No. 1782mm vanity with benchtop abutting one wall and double basins,
1950mm x 900mm wall-to-wall tiled shower base in lieu of standard,
relocate WC with 1029mm x 610mm aluminium awning window over.
Relocate entrance to Walk-in Robe and provide 820mm hinged door.
Provide 1800mm x 850mm aluminium awning window to Study in lieu of standard.

Note:
Not available with Option Internal02, Internal04, Internal05, External01

Internal Option 01

Floor plan option which provides additional Bedroom to the home in lieu of Living.
Provide additional built-in Robe and 870mm hinged door in lieu of bulkhead opening.
Provide 1200mm x 1450mm aluminium awning window in lieu of standard.
Note:
Not available with Internal03, Internal05 & External01

Internal Option 02

Floor plan option which provides additional Living to the home in lieu of Bed 4.
Remove built-in Robe and 870mm hinged door and provide bulkhead opening.
Provide 1800mm x 1810mm aluminium awning window in lieu of standard.
Note:
Not available with Internal03, Internal04, Internal05 & External01

Internal Option 03

Provide option which provides Ensuite and Walk-in Robe to Bed 3 in lieu of Living.
Remove built-in Robe and provide additional 870mm hinged door.
Ensuite includes:
1582mm vanity with single basin,
Wc and 900mm x 900mm tiled shower base,
1029mm x 1210mm aluminium awning window.
Note:
Not available with Internal01, Internal05 & External01

Internal Option 04

Floor plan option which provides additional Living to the front of the home with relocate Bed 1 in lieu of Bed 4 and increase length of Bed 1 by 300mm.
Provide 1800mm x 1810mm aluminium awning window to Bed 1 in lieu of standard.
Note:
Not available with Internal02, Internal05 & External01

Internal Option 05

Floor plan option which relocates Bed 1, Ensuite 1 and Walk-in Robe, relocates the Living to the front of the home and provides additional Ensuite 2 to Bed 3.
Ensuite 2 to Bed 3 includes:
1282mm vanity with single basin,
Wc and 900mm x 900mm tiled shower base,
1029mm x 1210mm aluminium awning window.
hinged door access and Robe flip locations.
Ensuite 1 to Bed 1 is as standard.
Note:
Not available with Internal01,
Internal02, Internal03, Internal04 & External01

Internal Option 06

Provide Bathroom upgrade option, including:
freestanding bath,
1200mm x 900mm tiled shower base and
682mm vanity in lieu of standard.

External Option 01

Provide Alfresco option in lieu of Living area with structural concrete floor,
1No. 470mm x 470mm brick pier and tiled hip roof over.
Kitchen, Laundry, Meals and Family relocated to accommodate.
Relocate Bed 4 to Living location with rearranged layout of Robes and Pantry with Coats cupboard removed.
hinged door access to Bed 3 moves also.
Note:
Not available with Kitchen02, Kitchen03, Kitchen04, Kitchen05,
Internal01, Internal02, Internal03, Internal04 & Internal05.

External Option 02

Provide Alfresco option with structural concrete floor,
2No. 470mm x 470mm brick piers and extension of tiled hip roof.
Note:
Increases length of home by 3.0m
Increases floor area by 15.8m² and requires minimum 30m lot length

Garage Option 02

Provide extension to Garage to create additional Storage area including:
additional 2057mm x 850mm aluminium awning feature window.
Increases width of the home by 1680mm.
Increases area of the home by 9.07m²

