



**FLOORPLAN OPTIONS**

We personalise our floorplans. Talk to us about our huge range of ready-to-go design options or simply visit [www.burbank.com.au/south-australia](http://www.burbank.com.au/south-australia) for more details.

Listed details based on Sheffield facade floorplan (illustrated)

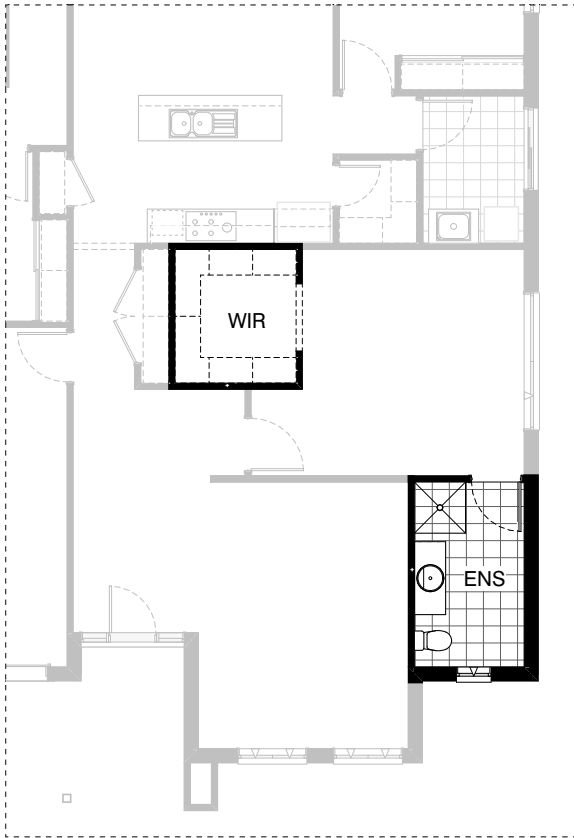
**Facades available:**

Sheffield, Aster, Eastwood,	
Hartford, Lancaster, Leawood,	
Newbury, Wiltshire	
<b>Overall home width</b>	<b>14.03m</b>
<b>Overall home length</b>	<b>20.99m</b>

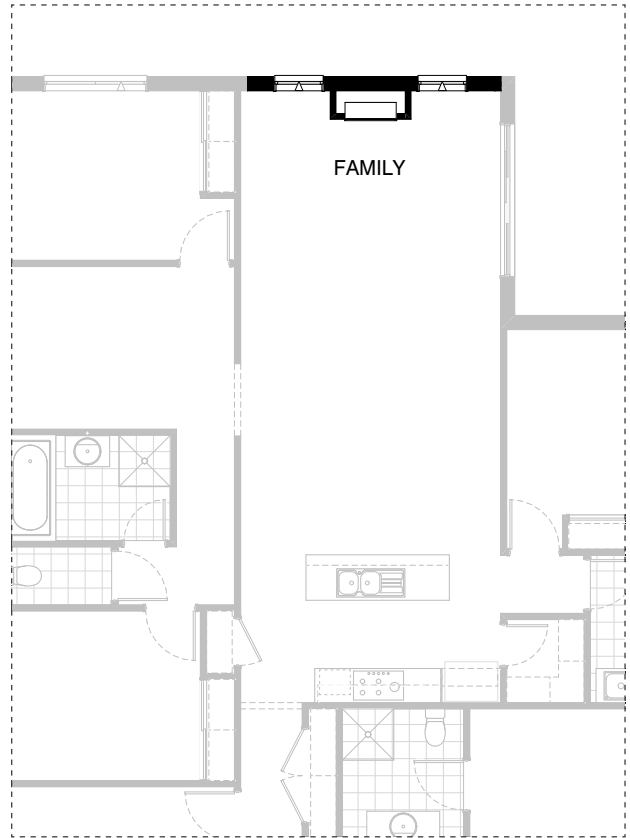
Residence	199.4m <sup>2</sup>	21.5sq
Garage	36.3m <sup>2</sup>	3.9sq
Porch	6.8m <sup>2</sup>	0.7sq
Alfresco	14.1m <sup>2</sup>	1.5sq
<b>Total</b>	<b>256.6m<sup>2</sup></b>	<b>27.6sq</b>

\*Copyright conditions. All photos and illustrations are representative only. Floor plans and specifications may be varied by Burbank without notice, the dimensions are diagrammatic only and a Building Contract with final drawings will display correct dimensions and detail. All designs are the property of Burbank and must not be used, reproduced, copied or varied, wholly or in part without written permission from an authorised Burbank representative. Copyright Burbank Australia (SA) Pty Ltd. ABN 96 165 533 406. BLD 266709.

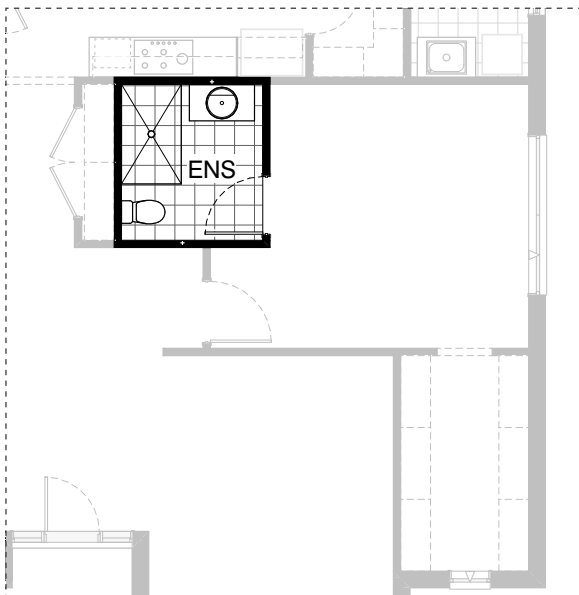
**Call 13 BURBANK**  
**Visit [burbank.com.au](http://burbank.com.au)**



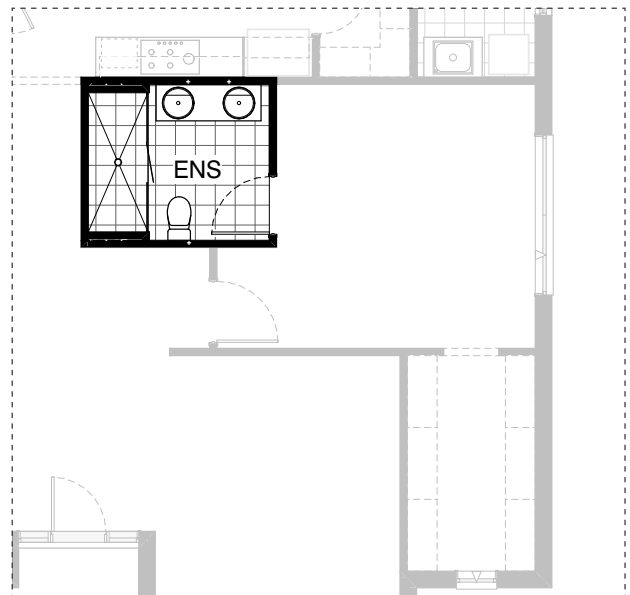
**IN01**



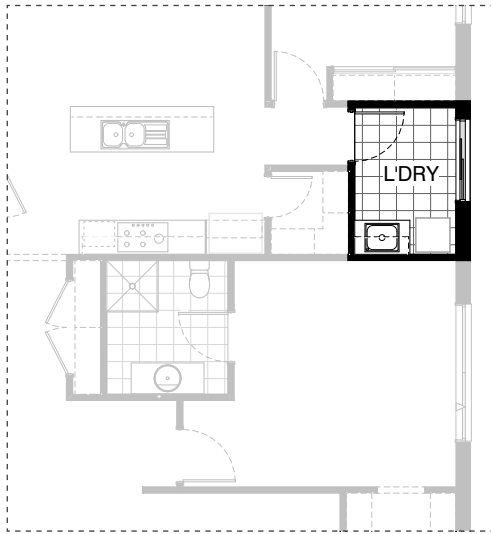
**IN02**



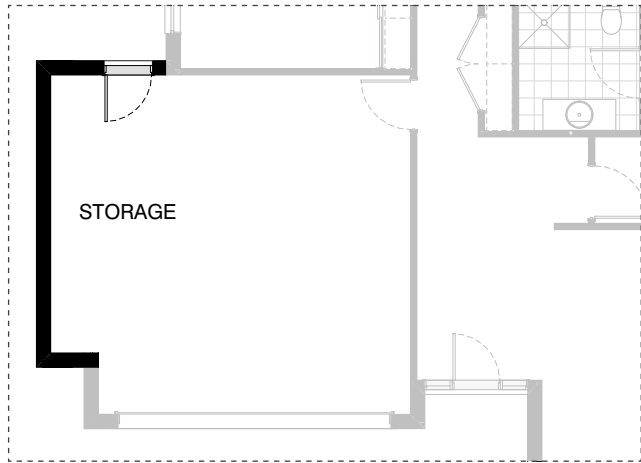
**EN01**



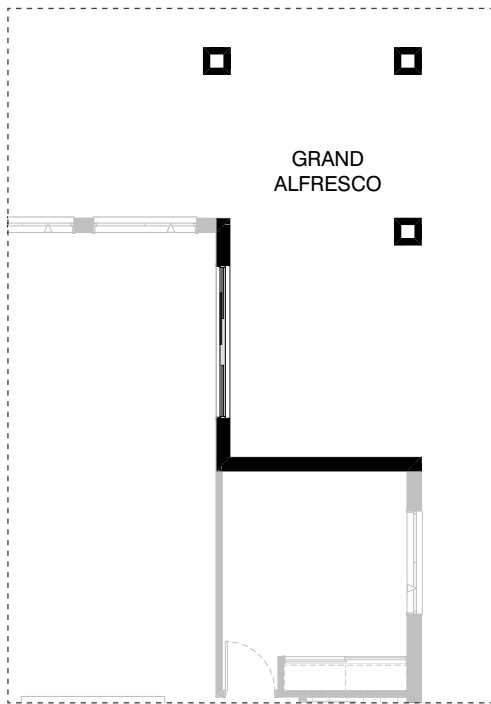
**EN02**



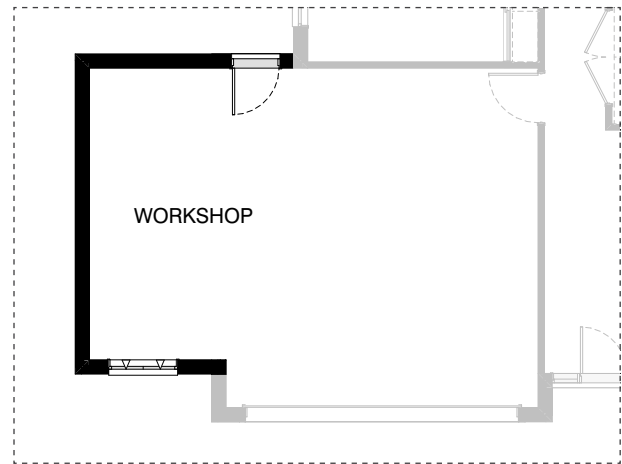
**L01**



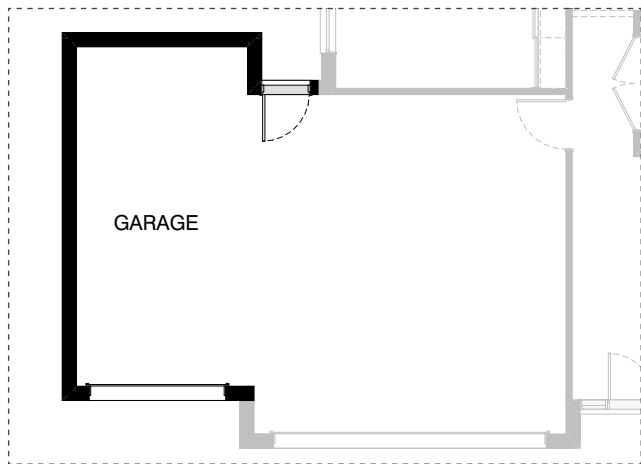
**G01**



**EX01**



**G02**



**G03**

**OPTION DESCRIPTIONS****EN01 - Ensuite Option 01**

Provide Ensuite upgrade with 900mm x 1500mm tiled shower base, 1No. 982mm wide vanity unit in lieu of standard to suit.

**EN02 - Ensuite Option 02**

Provide Ensuite upgrade by deleting Linen cupboard including 2No. 820mm flush panel hinged doors, 300mm deep shelves and extend Ensuite width by 600mm. Provide additional 2100mm x 900mm wall to wall tiled shower base in lieu of standard with voids both sides, 1No. 1582mm wide vanity with double basins in lieu of standard.

**IN01 - Internal Option 01**

Relocate Ensuite with WIR and provide additional hanging rail and shelf to WIR.

**IN02 - Internal Option 02**

Provide Real Flame Inspire 900 gas fireplace, 400mm off floor level in a 1400mm x 500mm boxed out plaster wall with 4 sided black fascia to Family room rear wall and capped gas point, 2No. 1800mm x 850mm aluminium awning windows in lieu of standard.

**L01 - Laundry Option 01**

Provide Laundry upgrade including: 1No. 900mm base cupboard with inset trough, 1No. 900mm overhead cupboard, additional tiled splashback and benchtop to suit.

**EX01 - External Option 01**

Provide Grand Alfresco option to rear of Family including: Additional 2No. 470mm x 470mm brick piers and earth floor to Alfresco. Increase length by 3000mm. Increase area by 11.49m<sup>2</sup>.

**G01 - Garage Option 01**

Provide extension to Garage to create additional Storage area. Increases width by 840mm. Increases area by 4.53m<sup>2</sup>.

**G02 - Garage Option 02**

Provide extension to Garage to create Workshop area including 1No. 1800mm x 1210mm aluminium awning feature window to suit. Increases width by 2400mm. Increases area by 13.51m<sup>2</sup>.

**G03 - Garage Option 03**

Provide triple car Garage including 1No. additional 2140mm x 2410mm Garage door as per colour selection. Increases width by 3120mm. Increases area by 20.51m<sup>2</sup>.