



Facades available:

| | |
|-------------------------------|---------------|
| Sheffield, Aster, Eastwood, | |
| Hartford, Lancaster, Leawood, | |
| Newbury, Wiltshire | |
| Overall home width | 11.27m |
| Overall home length | 23.75m |

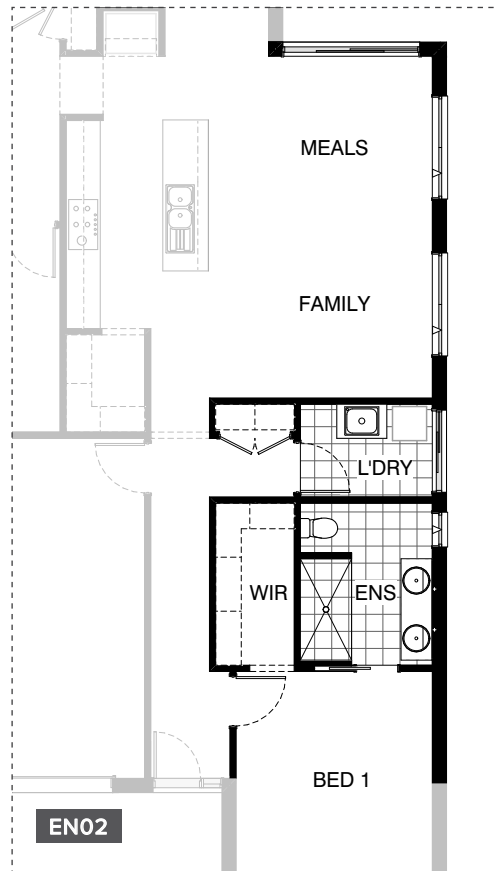
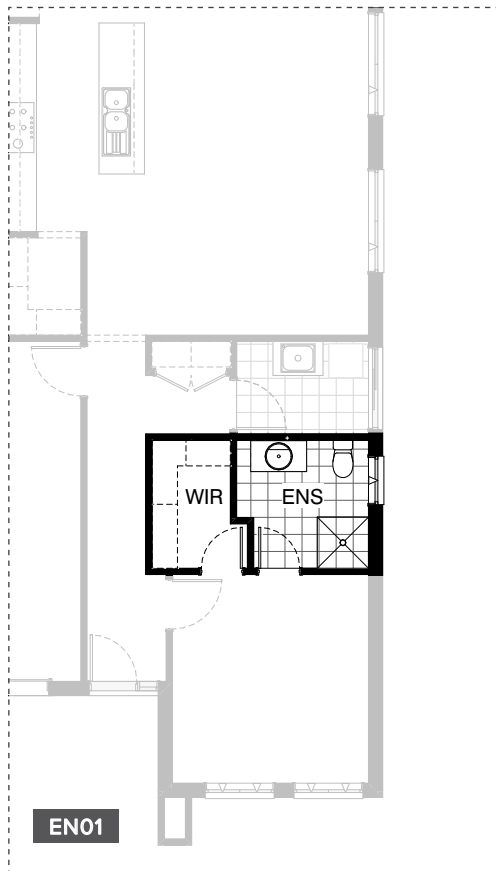
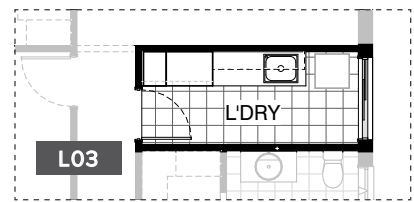
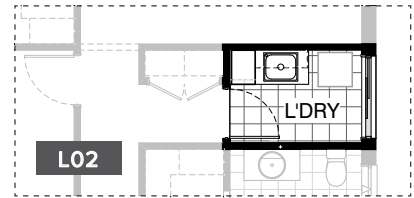
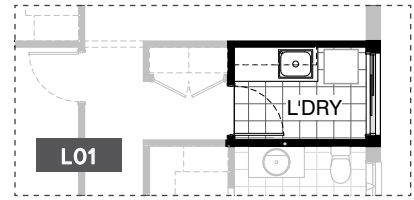
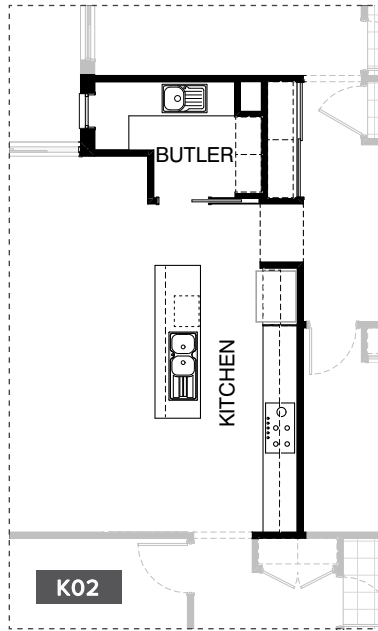
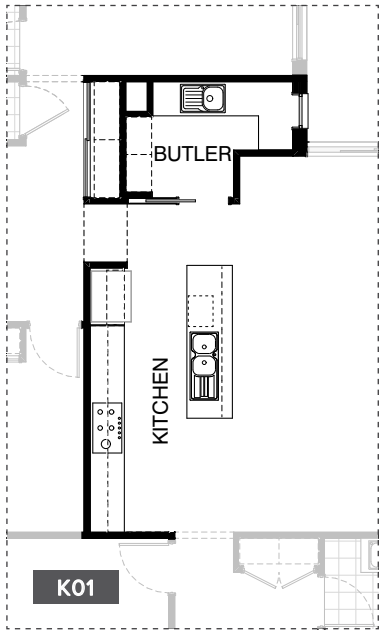
| | | |
|--------------|---------------------------|---------------|
| Residence | 167.2m ² | 18.0sq |
| Garage | 37.5m ² | 4.0sq |
| Alfresco | 12.1m ² | 1.3sq |
| Porch | 4.9m ² | 0.5sq |
| Total | 221.7m² | 23.9sq |

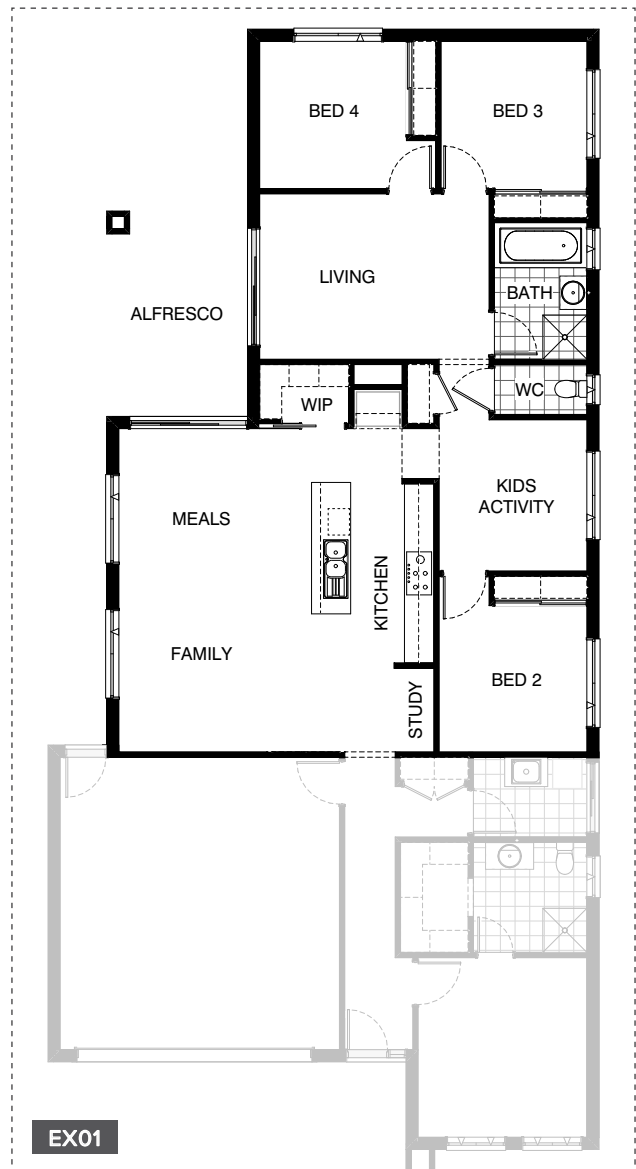
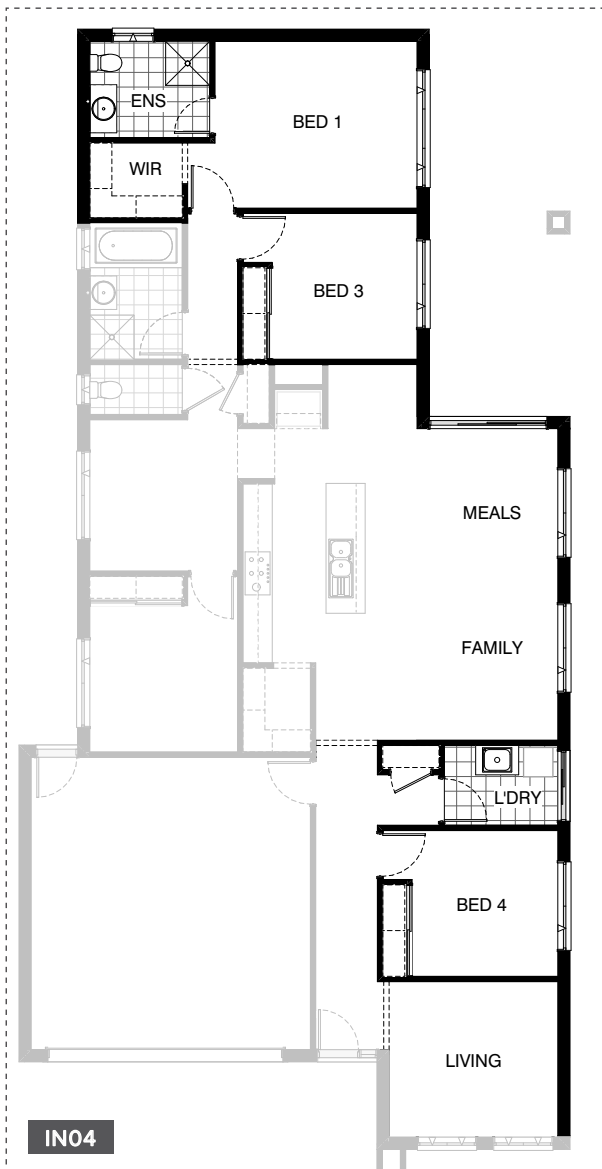
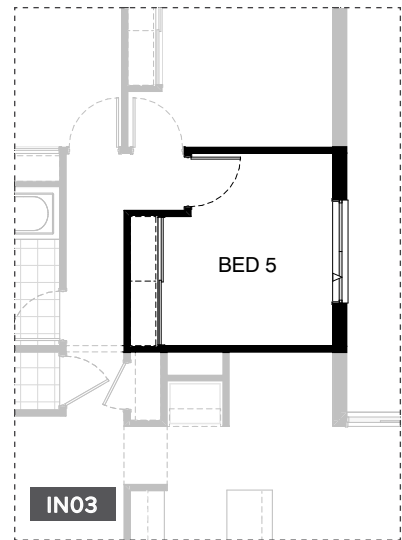
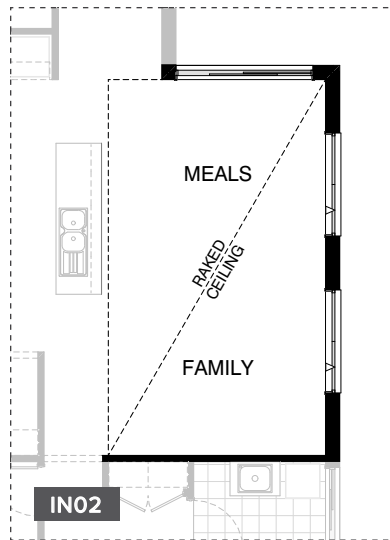
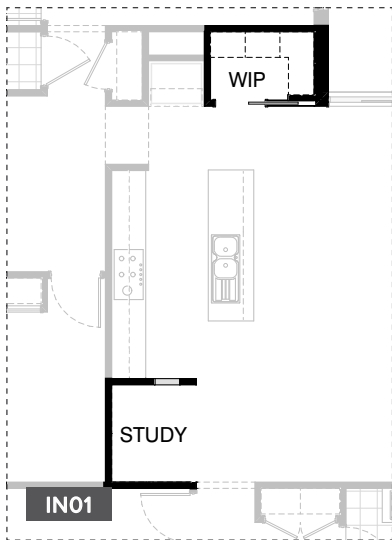
FLOORPLAN OPTIONS

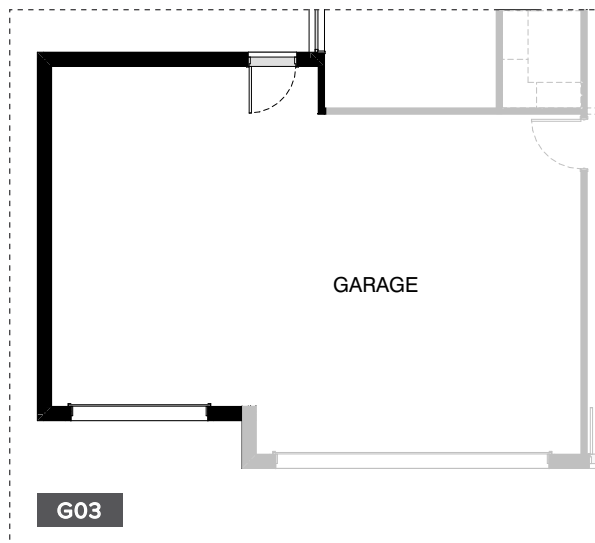
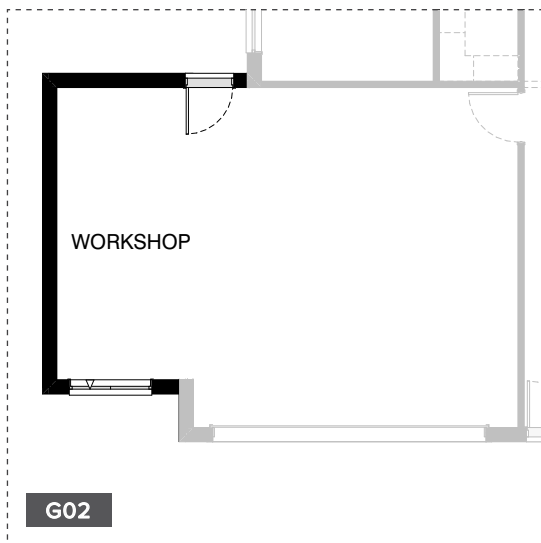
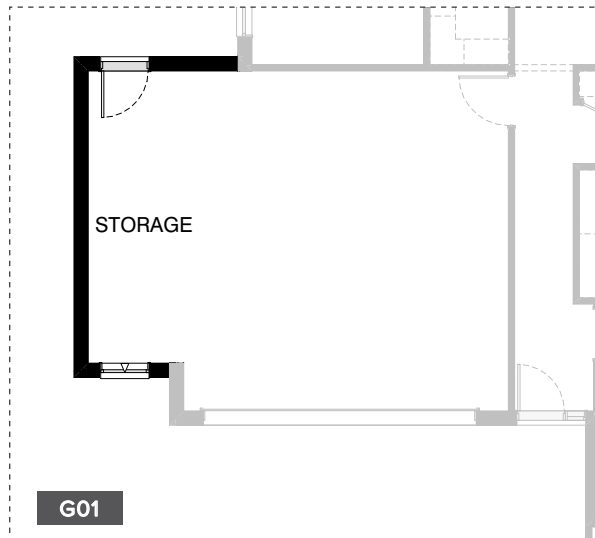
We personalise our floorplans. Talk to us about our huge range of ready-to-go design options or simply visit www.burbank.com.au/south-australia for more details.

Listed details based on Sheffield facade floorplan (illustrated)

*Copyright conditions. All photos and illustrations are representative only. Floor plans and specifications may be varied by Burbank without notice, the dimensions are diagrammatic only and a Building Contract with final drawings will display correct dimensions and detail. All designs are the property of Burbank and must not be used, reproduced, copied or varied, wholly or in part without written permission from an authorised Burbank representative. Copyright Burbank Australia (SA) Pty Ltd. ABN 96 165 533 406. BLD 266709.







OPTION DESCRIPTIONS**K01 - Kitchen Option 01**

Provide Butler's Pantry option which moves Pantry to other side of Kitchen and

Ref. space relocated.

New Kitchen includes 900mm under bench oven & 900mm cooktop with 900mm retractable rangehood, 450mm drawer unit, dishwasher provision, microwave provision with pot drawer, 3No. 900mm base cupboards, 2No. 450mm base cupboards, 2No. 900mm overhead cabinets, 2No. 450mm overhead cabinets, 16mm laminated end panel and 960mm laminated open shelf above Ref. space.

Butler's Pantry includes:

additional laminated benchtop,

1No. 800mm base cupboard,

2No. 450mm base cupboards,

1050mm blind-corner base cupboard with 2No. 300mm doors,

4No. 450mm shelves, 870mm cavity sliding door,

additional 1200mm x 610mm aluminium fixed window with no bottom reveal and

additional tiled splash back to suit.

Linen cupboard extended by 840mm to suit.

K02 - Kitchen Option 02

Provide Butler's Pantry option which moves Pantry to other side of Kitchen.

New Kitchen includes 900mm under bench oven & 900mm cooktop with 900mm retractable rangehood, 450mm drawer unit, dishwasher provision, microwave provision with pot drawer,

3No. 900mm base cupboards,

2No. 450mm base cupboards,

2No. 900mm overhead cabinets,

2No. 450mm overhead cabinets,

16mm laminated end panel and 960mm laminated open shelf above Ref. space.

Butler's Pantry includes:

additional laminated benchtop,

1No. 800mm base cupboard,

2No. 450mm base cupboards,

1050mm blind-corner base cupboard with 2No. 300mm doors,

4No. 450mm shelves, 870mm cavity sliding door,

additional 1200mm x 610mm aluminium fixed window with no bottom reveal and

additional tiled splash back to suit.

Linen cupboard extended by 840mm to suit.

Note:

Option only available with External01.

L01 - Laundry Option 01

Provide Laundry upgrade including insert trough,

2No. 700mm base cupboards,

2No. 700mm overhead cupboards,

additional benchtop and tiled splashback to suit.

L02 - Laundry Option 02

Provide Laundry upgrade including insert trough,

1No. 900mm base cupboard,

1No. 400mm laminated Broom unit,

1No. 900mm overhead cupboard,

additional benchtop and tiled splashback to suit.

L03 - Laundry Option 03

Provide Laundry upgrade by extending Laundry to passage.

Provide 400mm laminated Broom unit,

800mm laminated Linen unit,

2No. 800mm base and overhead cabinets, insert trough,

additional benchtop and tiled splashback to suit

EN01 - Ensuite Option 01

Provide Ensuite option with

720mm hinged door access from

Bed 1 directly to Walk-in Robe.

EN02 - Ensuite Option 02

Provide Ensuite option including:

900mm x 1780mm tiled shower base,

1782mm vanity with double basins and center shelf unit in lieu of standard,

1No. additional double power point,

720mm cavity sliding door,

provide 1800mm x 610mm aluminium awning window in lieu of standard,

provide plaster nib wall between WC and shower,

800mm wide opening to Walk-in Robe with 300mm bulkhead.

Option also extends Ensuite and WIR length by 600mm,

space taken from Family / Meals as shown.

IN01 - Internal Option 01

Provide option which swaps the location of the Walk-in Pantry and Study as shown.

Option adds 870mm cavity sliding door with

additional stud wall to WIP in lieu of opening,

provide 1200mm high x 450mm wide cut-out

opening to Study side wall.

IN02 - Internal Option 02

Provide raked ceiling to Meals and Family with

bulkhead and standard ceiling height over

Kitchen / Study / WIP.

IN03 - Internal Option 03

Provide 5th Bedroom option in lieu of Living, including:

built-in Robe with gyprock sliding doors,

870mm hinged door,

delete 1No. double power point,

relocate 2-way Alfresco light switch to passage,

provide 1200mm x 1810mm aluminium awning window

in lieu of standard sliding door.

IN04 - Internal Option 04

Provide floor plan option with Bed 1 to the rear of the home.

Option reduces length of Family / Meals by 240mm,

moves Living and Bed 4 to the front of the home,

reduces Linen cupboard width by 230mm and

Bed 3 moves into the previous Living space with

sliding door deleted,

Provide 1200mm x 2410mm aluminium awning window to Bed 1.

EX01 - External Option 01

Provide mirrored rear section of the home.

New kitchen includes 900mm under bench oven,

900mm cooktop with 900mm retractable rangehood,

450mm drawer unit, dishwasher provision,

microwave provision with pot drawer,

3No. 900mm base cupboards,

2No. 450mm base cupboards,

2No. 900mm overhead cabinets,

2No. 450mm overhead cabinets,

16mm laminated end panel and

900mm laminated open shelf above Ref. space.

New Walk-in Pantry includes 4No. 450mm

shelves and 870mm cavity sliding door with additional stud wall.

EX02 - External Option 02

Provide Grand Alfresco option with

additional light point & tiled roof above.

Option adds 10.71m² to the overall house area.

OPTION DESCRIPTIONS**G01 - Garage 01**

Provide extension to Garage to create additional Storage area including:
1No. 2057mm x 850mm aluminium feature awning window.
Increases width by 1680mm.
Increases area by 9.48m²

G02 - Garage 02

Provide extension to Garage to create Workshop area including:
1No. 2057mm x 1450mm aluminium feature awning window.
Increases width by 2400mm.
Increases area by 13.54m².

G03 - Garage 03

Provide triple car Garage including:
1No. 2140mm x 2410mm approx. garage door as per colour selection.
Increases width by 3600mm and increase length by 840mm.
Increases area by 24.34m².
Note:
Bed 2 window relocated to suit.