

HEATHMONT 25

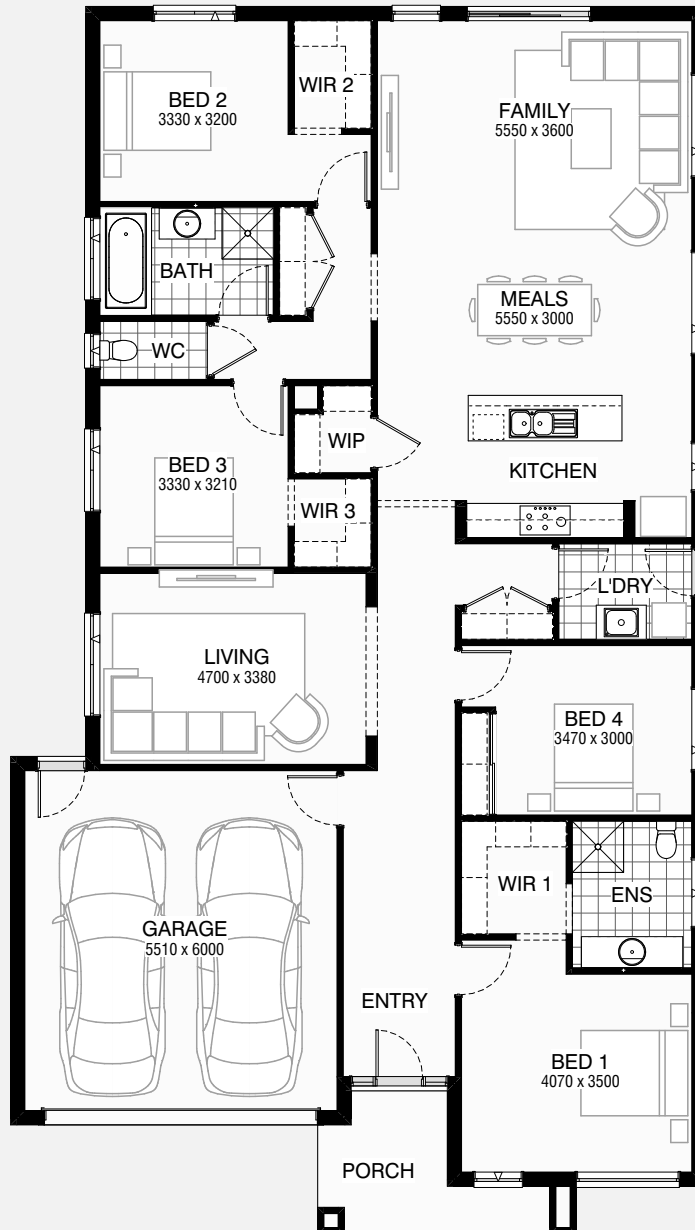
🏠 4 🚗 2 🚗 2

Total squares 25.2sq

B
SERIES

Minimum
Lot Width
14.0m

Minimum
Lot Length
28.0m



Design Dimensions
12,230mm(W) x 21,590mm(L),

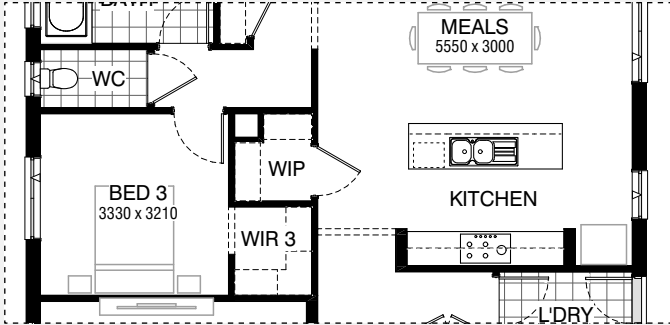
Facade Choices
Brentwood, Glendale, Inglewood,
Malibu, Northridge, Pasadena, Santa Monica.
Details based on Inglewood façade floorplan (illustrated)

DESIGN DIMENSIONS

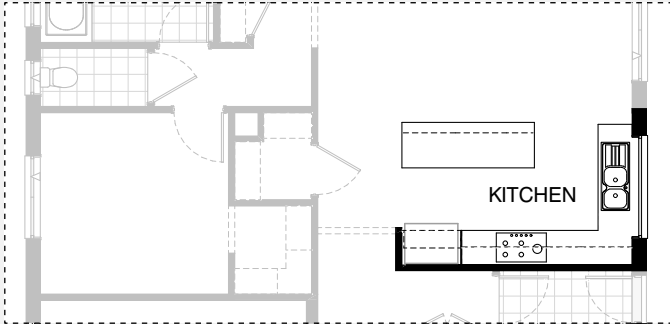
Residence	190.7m ²	20.5sq
Garage	36.3m ²	3.9sq
Porch	7.3m ²	0.8sq
Total	234.3m²	25.2sq

Burbank

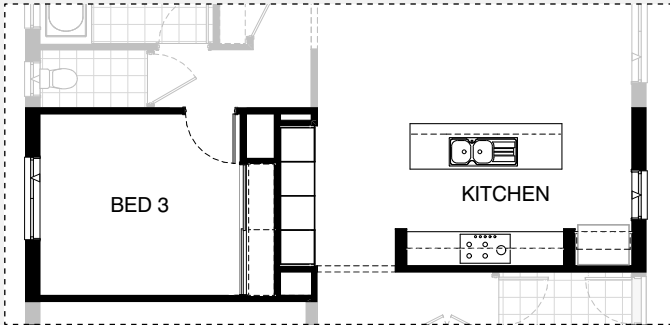
*Copyright conditions. All photos and illustrations are representative only. Floor plans and specifications may be varied by Burbank without notice, the dimensions are diagrammatic only and a Building Contract with final drawings will display correct dimensions and detail. All designs are the property of Burbank and must not be used, reproduced, copied or varied, wholly or in part without written permission from an authorised Burbank representative. Copyright Burbank Australia Pty Ltd. ABN 91 007 099 872. Builders Registration Number CDB-U-52603.



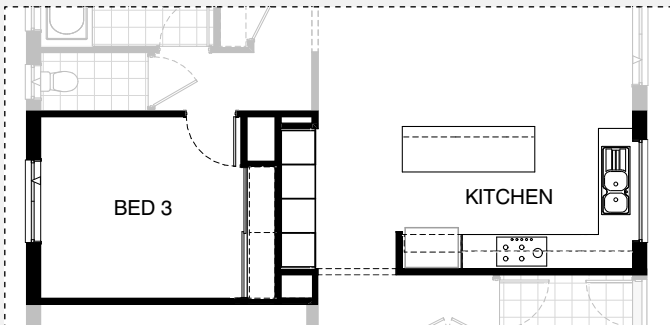
Master Kitchen design



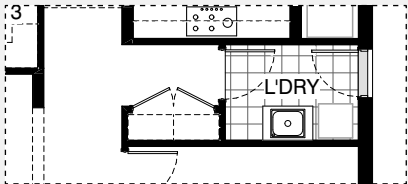
K01



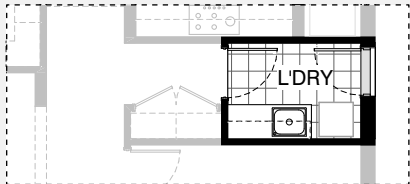
K02



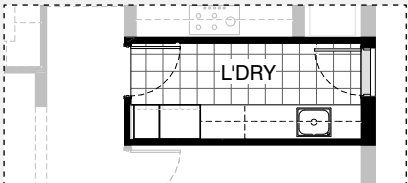
K03



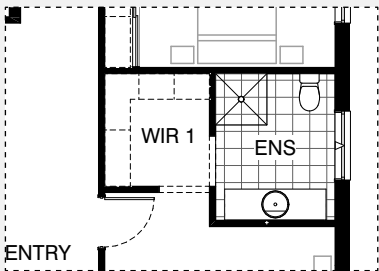
Master Laundry design



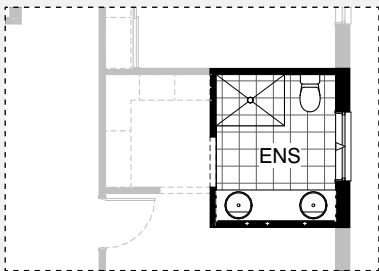
LD1



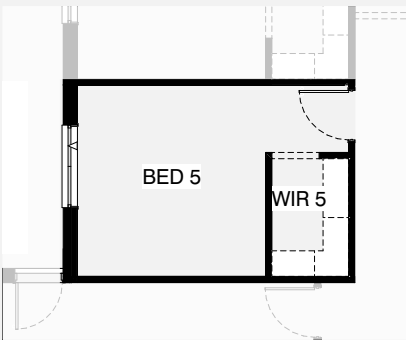
LD2



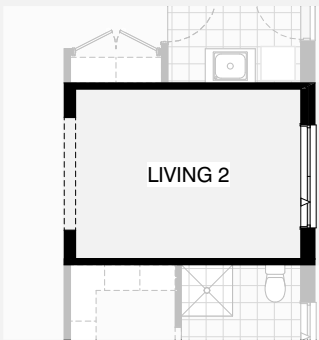
Master Ensuite design



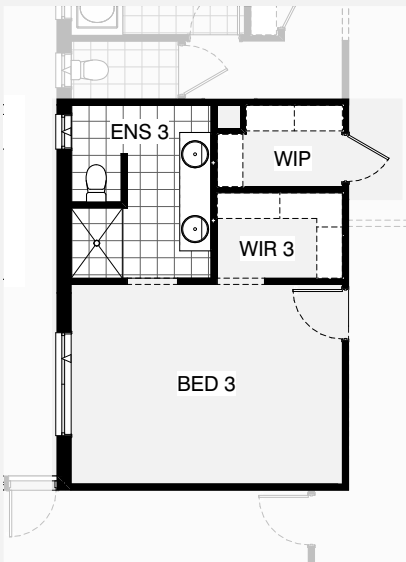
EN1



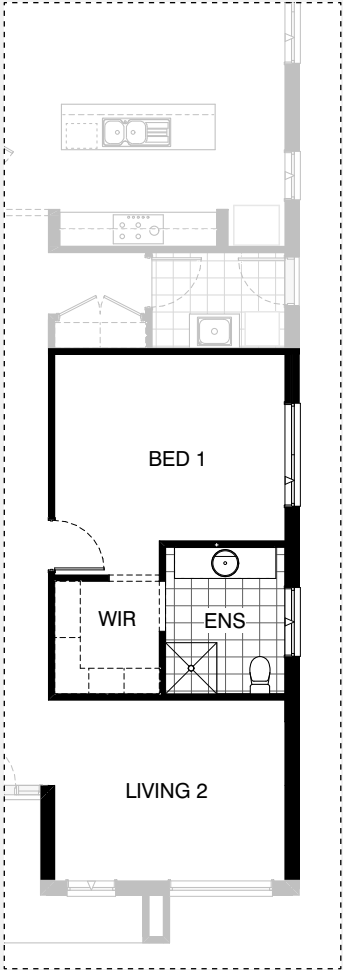
IN1



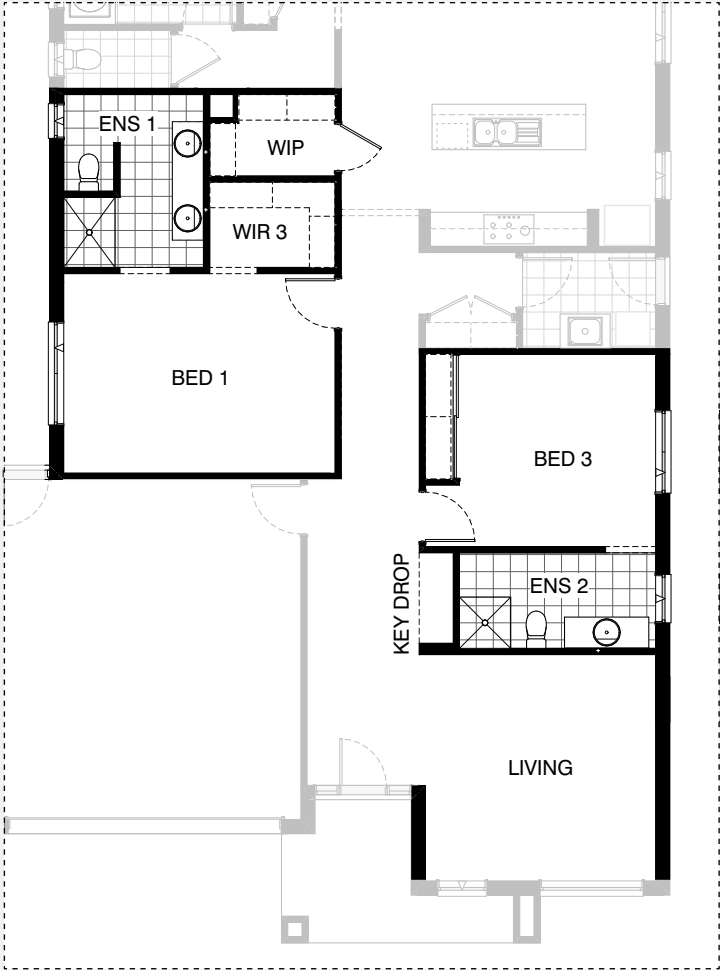
IN2



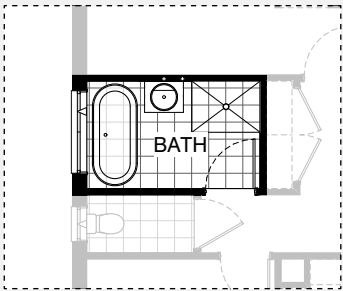
IN3



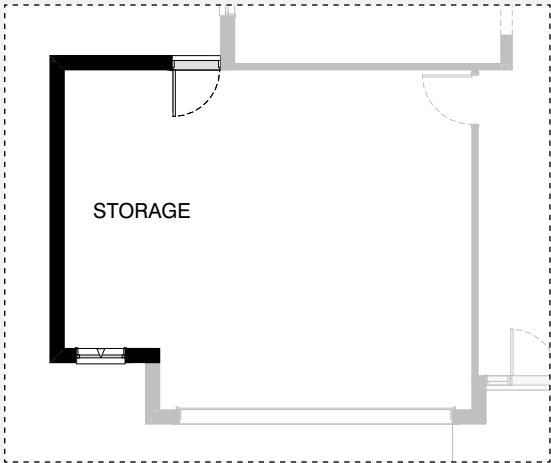
IN4



IN5



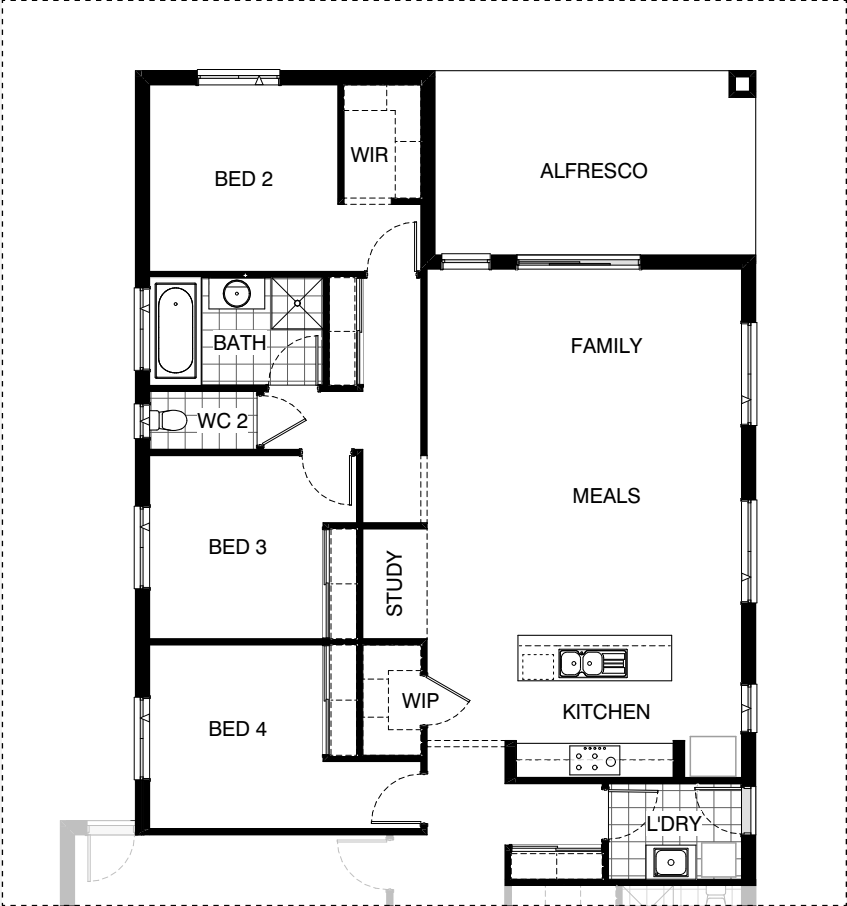
IN6



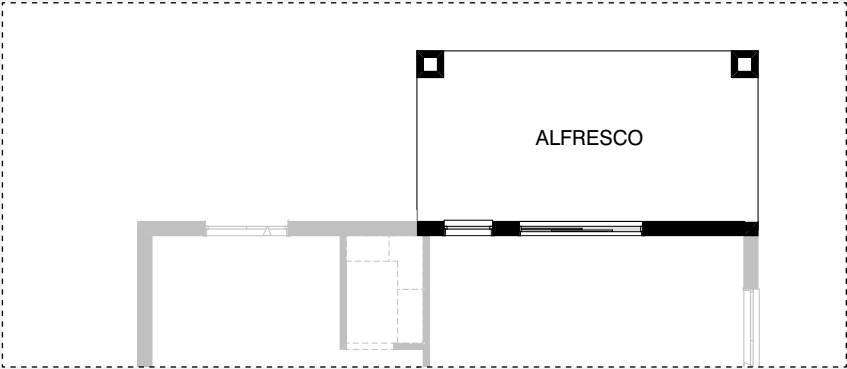
G01

HEATHMONT 25

4 2 2



EX1



EX2

HEATHMONT 25

OPTION DESCRIPTIONS

Option Kitchen01

Provide L-shaped Kitchen upgrade option with clear island bench and large fixed window, including:

1No. 900mm retractable rangehood,
1No. 900mm cooktop,
1No. 900mm under bench oven,
1No. double bowl sink,
1No. 450mm drawer unit,
1No. dishwasher provision,
3No. 900mm base cupboards,
1No. 900mm corner base cupboard,
2No. 600mm base cupboards,
2No. 600mm overhead cupboards,
1No. 850mm overhead cupboard,
1No. laminated open shelf over relocated Ref space,
additional 20mm stone benchtop and tiled splashback to suit.
Provide 1200mm x 1810mm aluminium fixed window with no bottom reveal in lieu of standard.

Option Kitchen02

Provide Kitchen upgrade option with built-in joinery, including:

1No. 900mm retractable rangehood,
1No. 900mm cooktop,
1No. 450mm drawer unit,
1No. dishwasher provision,
1No. double bowl sink,
4No. 900mm base cupboards,
1No. 600mm base cupboard,
2No. 900mm overhead cupboards,
1No. laminated open shelf over Ref space,
2No. 600mm laminate oven towers with microwave provisions,
2No. 600mm laminated pantry units.
Bulkhead relocated as shown.
Increase Bed 3 by 210mm, and provide standard built-in Robe with sliding doors in lieu of Walk-in Robe.

Note:

Not available with Internal03, Internal05 & External01

Option Kitchen03

Provide L-shaped Kitchen upgrade option with clear island bench, large fixed window and built-in joinery, including:

1No. 900mm retractable rangehood,
1No. 900mm cooktop,
1No. double bowl sink,
1No. 450mm drawer unit,
1No. dishwasher provision,
4No. 900mm base cupboards,
1No. 900mm corner base cupboard,
2No. 600mm base cupboards,
2No. 600mm overhead cupboards,
1No. 850mm overhead cupboard,
1No. laminated open shelf over relocated Ref space,
2No. 600mm laminate oven towers with microwave provisions,
2No. 600mm laminated pantry units,
additional 20mm stone benchtop and tiled splashback to suit.
Bulkhead relocated as shown.
Provide 1200mm x 1810mm aluminium fixed window with no bottom reveal in lieu of standard.
Increase Bed 3 by 210mm, and provide standard built-in Robe with sliding doors in lieu of Walk-in Robe.

Note: Not available with Internal03, Internal05 & External01

Option Laundry01

Provide Laundry upgrade with laminate base and overhead cupboards and laminated inset trough, including:

2No. 700mm base cupboards,
2No. 700mm overhead cupboards,
32mm laminate benchtop and tiled splashback to suit.

Option Laundry02

Provide Laundry upgrade with laminate base and overhead cupboards and laminated inset trough, including:

1No. 800mm base cupboard,
1No. 400mm base cupboard,
3No. 800mm overhead cupboards,
1No. 400mm overhead cupboard,
1No. 700mm laminated linen unit,
1No. 400mm laminated Broom unit,
32mm laminate benchtop and tiled splashback to suit.
Increase benchtop height to 950mm and provides open space underbench to store washing machine and dryer side-by-side.
Relocate hinged access door to Laundry and remove built-in Linen cupboard.

Option Ensuite01

Provide Ensuite upgrade option including:

1No. 2082mm vanity with double basins, including 1 row tiling beneath mirror to suit wall-to-wall benchtop including returns in lieu of standard.
900mm x 1200mm tiled shower base.

Option Ensuite02

Provide Ensuite upgrade option with Study in lieu of Bed 4, including:

1No. 2082mm vanity with double basins, including 1 row tiling beneath mirror to suit wall-to-wall benchtop including returns,
1200mm x 900mm tiled shower base in lieu of standard,
enclosed WC with 720mm hinged door and 1029mm x 610mm aluminium awning window over.
Increase size of Walk-in Robe.

Provide 1029mm x 850mm aluminium awning window to Ensuite and 1800mm x 850mm aluminium awning window to Study in lieu of standard.

Note:

Not available with Internal02, Internal04, Internal05 & External01

Option Ensuite03

Provide Ensuite upgrade option with Study in lieu of Bed 4, including: freestanding bath with 1200mm x 1810mm aluminium awning window over,

1No. 2082mm vanity with double basins, including 1 row tiling beneath mirror to suit wall-to-wall benchtop including returns,
1200mm x 900mm tiled shower base in lieu of standard,
enclosed WC with 720mm hinged door.
Increases size of Bed 1 by 400mm.

Provide 1800mm x 850mm aluminium awning window to Study in lieu of standard.

Note:

Not available with Internal02, Internal04, Internal05 & External01

Option Ensuite04

Provide Ensuite upgrade option in lieu of Bed 4, including:

freestanding bath with 1200mm x 1450mm aluminium awning window over,
1No. 1782mm vanity with double basins,
2100mm x 900mm wall-to-wall tiled shower base in lieu of standard,
enclosed WC with 720mm hinged door and
1029mm x 610mm aluminium awning window over.

Provide 2No. Walk-in Robes in lieu of standard with 1800mm x 610mm aluminium awning window.

Increases size of Bed 1 by 600mm.

Note:

Not available with Internal02, Internal04, Internal05 & External01



HEATHMONT 25

OPTION DESCRIPTIONS

Option Internal01

Floor plan option which provides additional Bedroom to the home in lieu of Living.

Provide additional Walk-in Robe and

870mm hinged door in lieu of bulkhead opening.

Provide 1200mm x 1450mm aluminium awning window in lieu of standard.

Note:

Not available with Internal03, Internal05 & External01

Option Internal02

Floor plan option which provides additional Living to the home in lieu of Bed 4.

Remove built-in Robe and 870mm hinged door and provide bulkhead opening.

Provide 1800mm x 1810mm aluminium awning window in lieu of standard.

Note:

Not available with Ensuite02, Ensuite03, Ensuite04, Internal04, Internal05 & External01

Option Internal03

Floor plan option which provides Ensuite and Walk-in Robe to Bed 3 in lieu of Living and

built-in Robe and relocate 870mm hinged door.

Bed 3 Ensuite includes:

2082mm vanity with double basins,

1230mm x 900mm tiled shower base,

WC located behind nib wall with 1800mm x 610mm aluminium awning window.

Walk-in Pantry increases in size and Return Air wall register relocates.

Note:

Not available with Kitchen02, Kitchen03, Internal01, Internal05, External01

Option Internal04

Floor plan option which provides additional Living to the front of the home with

relocate Bed 1 in lieu of Bed 4.

Provide 1800mm x 1810mm aluminium awning window to Bed 1 in lieu of standard.

Note:

Not available with Ensuite02, Ensuite03, Ensuite04, Internal02, Internal05 & External01.

Option Internal05

Floor plan option which relocates Bed 1, Ensuite and Walk-in Robe, relocates the Living to the front of the home and

Bed 4 becomes Bed 3 with additional Ensuite.

Ensuite to Bed 3 includes:

1482mm vanity with single basin,

WC and 900mm x 900mm tiled shower base,

1029mm x 1210mm aluminium awning window.

hinged door access and Robe flip locations.

Bed 1 Ensuite includes:

2082mm vanity with double basins,

1230mm x 900mm tiled shower base,

toilet pan located behind nib wall with 1800mm x 610mm aluminium awning window.

Walk-in Pantry increases in size and Return Air wall register relocates.

Provide Key Drop to Entry passage with 180mm nib wall and bulkhead over.

Note:

Not available with Kitchen02, Kitchen03, Ensuite02, Ensuite03, Ensuite04, Internal01, Internal02, Internal03, Internal04 & External01

Option Internal06

Provide Bathroom upgrade option, including:

freestanding bath in lieu of standard,

1200mm x 900mm tiled shower base and 682mm vanity.

Option Garage01

Provide extension to Garage to create additional Storage area including: additional 2057mm x 850mm aluminium awning feature window.

Increases width of the home by 1680mm.

Increases area of the home by 9.07m²

Option External01

Provide Alfresco option in lieu of Living area with structural concrete floor, 1No. 470mm brickwork piers and tiled hip roof over.

Kitchen, Walk-in Pantry, Laundry, Meals and Family relocate to accommodate.

Living is deleted to accommodate.

Walk-in Robe to Bed 3 deleted and replaced with standard built-in Robes with

sliding doors, provide the same to Bed 4.

Study Nook provided with bulkhead over.

Bed 2 increases in size by 100mm, and Beds 3 and 4 decrease in size slightly.

Walk-in Pantry changes shape to accommodate.

Note:

Not available with Kitchen02, Kitchen03, Ensuite02, Ensuite03,

Ensuite04, Internal01, Internal02, Internal03, Internal04 & Internal05

Option External02

Provide Alfresco option with structural concrete floor,

2No. 470mm x 470mm brick piers and extension of tiled hip roof.

Note:

Increases length of home by 3.0m

Increases floor area by 18.0m² and requires minimum 32m lot length

